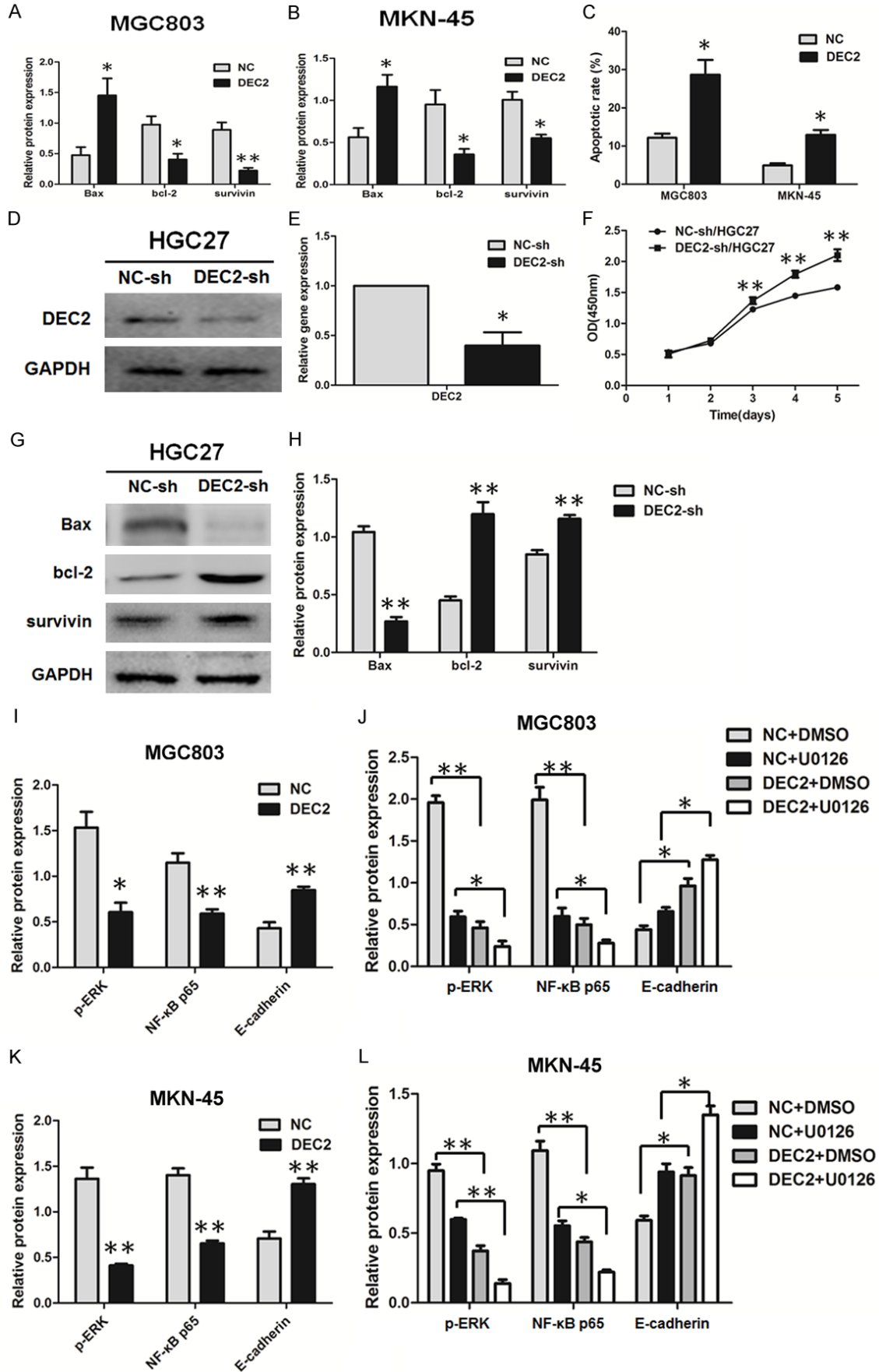


# DEC2 suppresses the progression of gastric cancer



## DEC2 suppresses the progression of gastric cancer

**Supplementary Figure 1.** A, B. Quantitative results of apoptotic-related proteins expression using western blot. C. The percentage of apoptotic cells is analyzed by flow cytometry. D, E. Quantitative results of DEC2 expression after transfection with DEC2 shRNA vector and control vector. F. Cell viability of DEC2-sh/HGC27 and control cells were measured by CCK8 assay. G, H. The expressions of apoptotic-related proteins were detected in DEC2-sh/HGC27 and control cells using western blot. I, K. Quantitative results of p-ERK, NF- $\kappa$ B p65 and E-cadherin expression in DEC2/MGC803, DEC2/MKN-45 and their corresponding control cells using western blot. J, L. Quantitative results of p-ERK, NF- $\kappa$ B p65 and E-cadherin expression in DEC2/MGC803, DEC2/MKN-45 and their corresponding control cells after treated with ERK inhibitor U0126 (10  $\mu$ M) using western blot. The error bars indicate  $\pm$  SEM. \*P<0.05; \*\*P<0.01 by Student's t-test. All the results were repeated thrice.