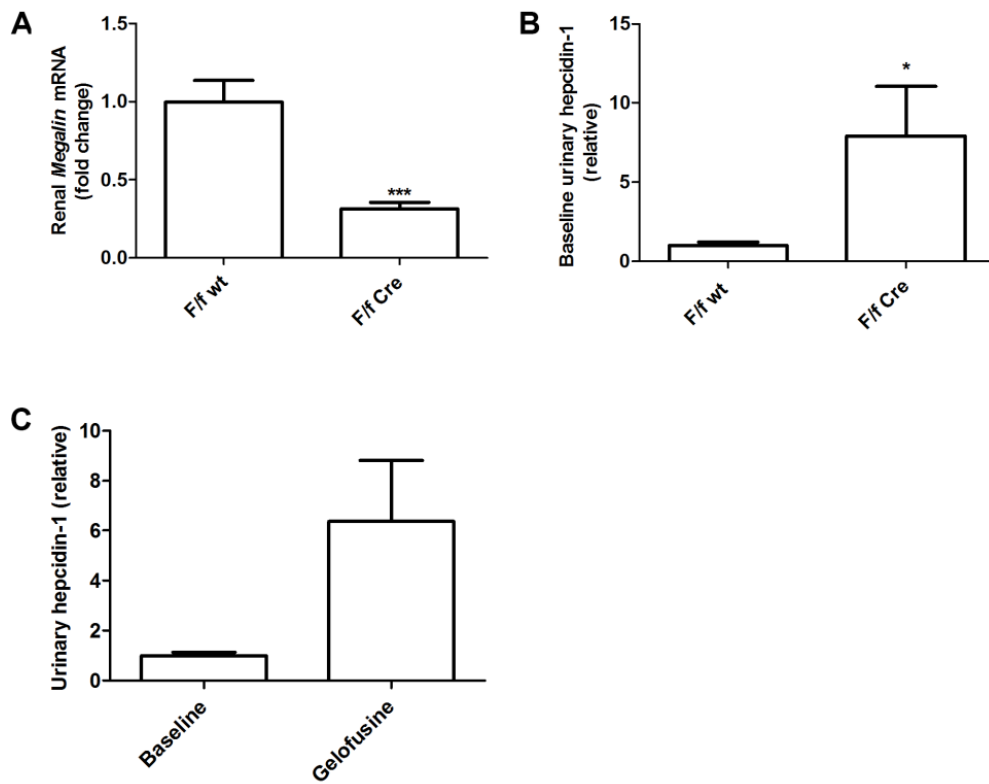


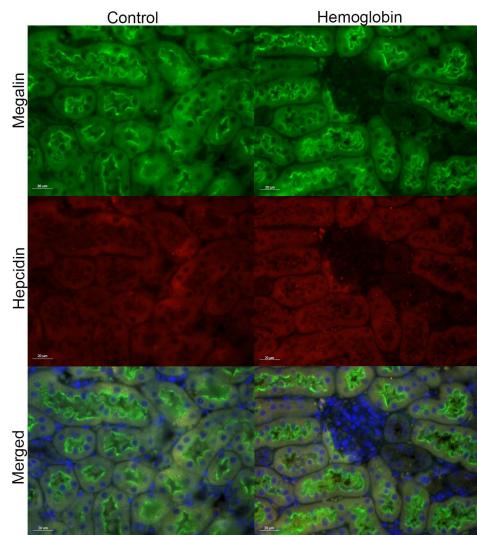
Supplementary files



Supplementary figure 1. Characterization of megalin deficiency in megalin^{f/f,Cre} mice and after Gelofusin® treatment

Renal mRNA expression of *Megalin* in wildtype (f/f wt; n=4) and megalin^{f/f,Cre} (f/f Cre; n=5) mice (A). Urinary excretion of hepcidin-1 in 24h baseline urine of megalin^{f/f,wt} and megalin^{f/f,Cre} mice (B) and 24h baseline urine and after Gelofusin® treatment (C).

* = p<0.05; *** = p<0.001 using the Student's t-test.



Supplementary figure 2. Hepcidin immunostaining in control and hemoglobin-treated mice.
Scalebar = 20 μ m.