

**Journal Of Cardiovascular Translational Research**

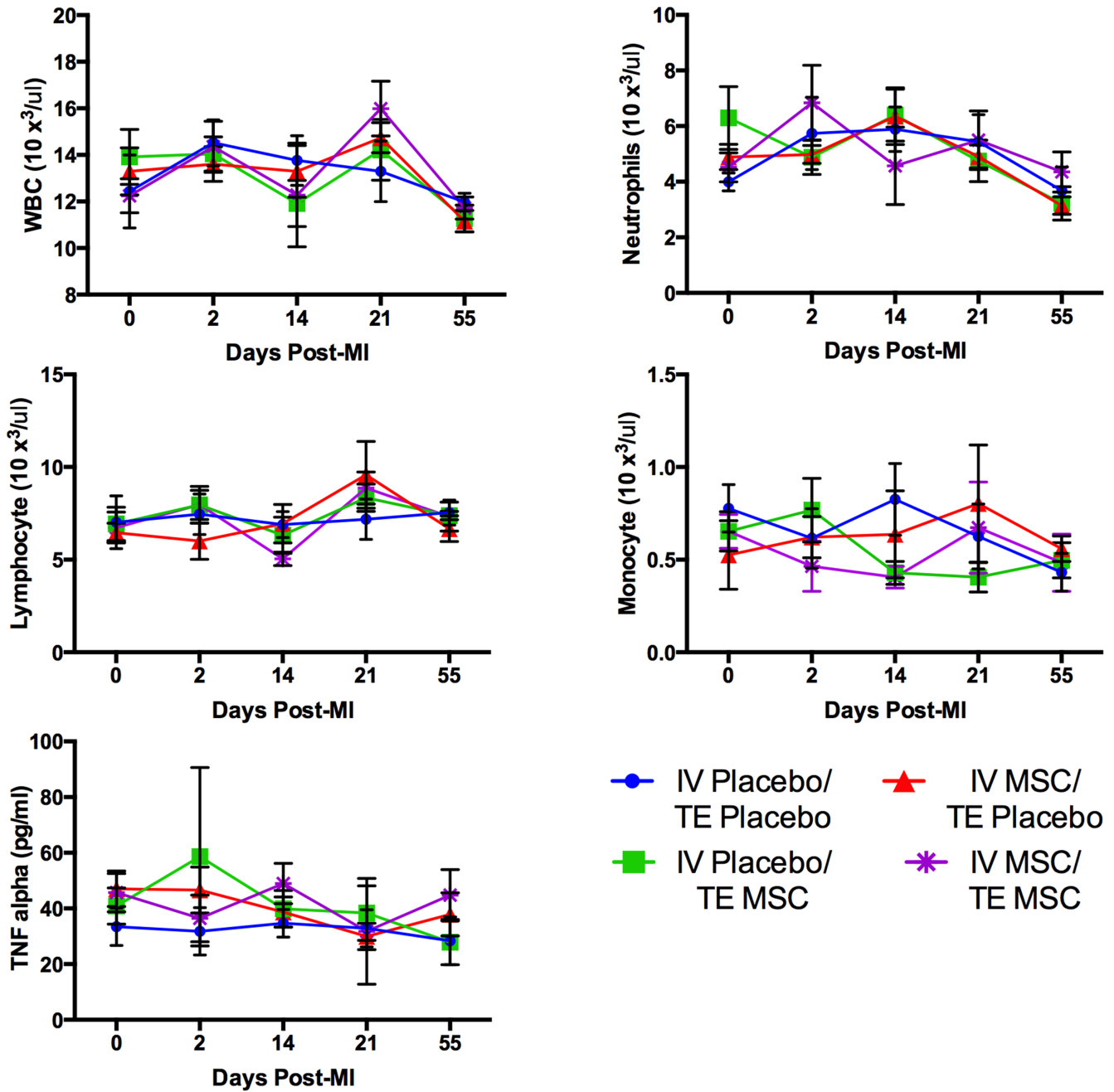
**Intravenous followed by Xray Fused with MRI Guided Transendocardial  
Mesenchymal Stem Cell Injection Improves Contractility Reserve in a Swine Model  
of Myocardial Infarction**

**Short Title: Double Dose MSC Therapy for MI Treatment in Swine**

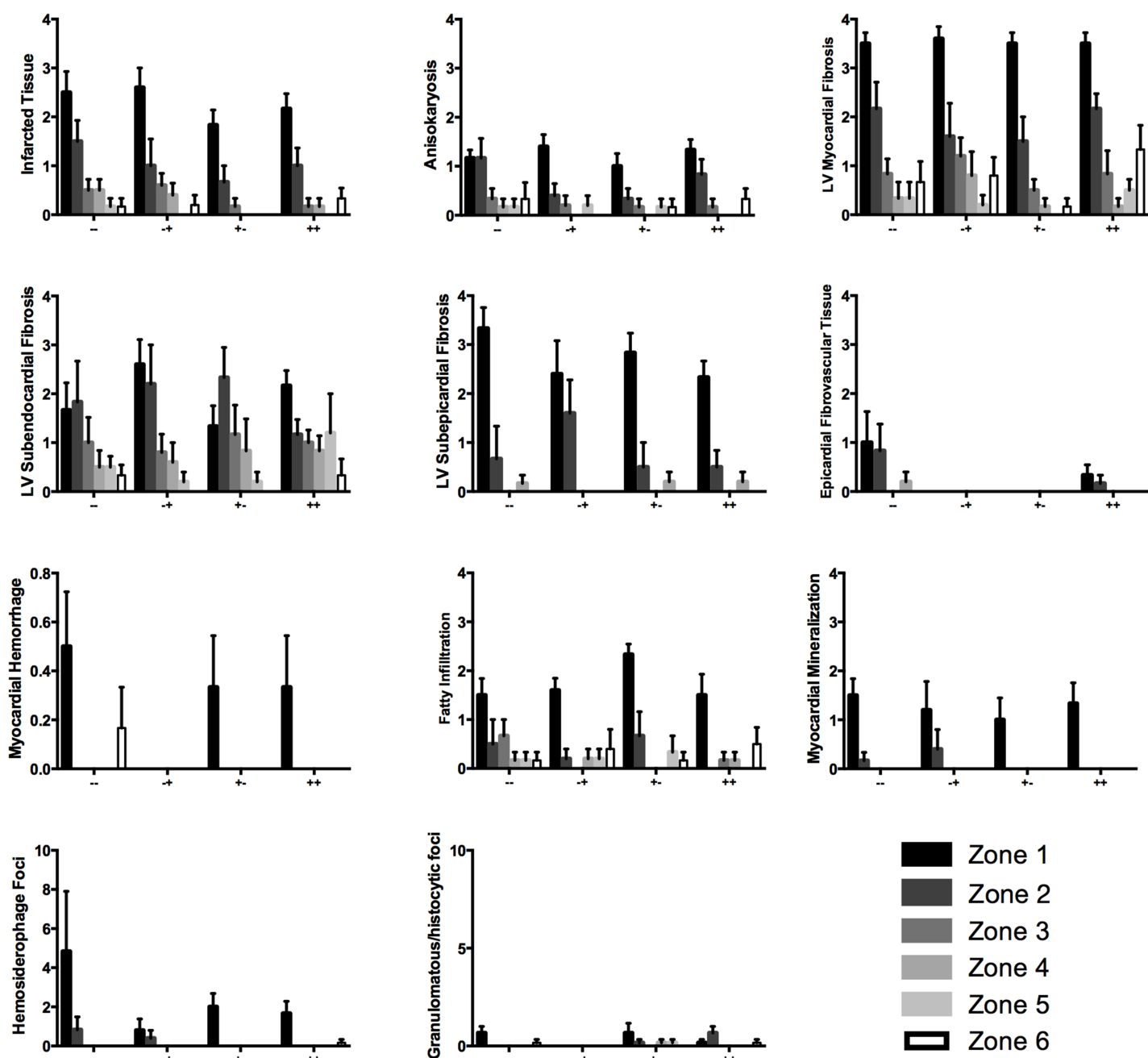
Eric G. Schmuck PhD, Jill M. Koch PhD, Timothy A. Hacker PhD, Charles R. Hatt PhD,  
Michael T. Tomkowiak PhD, Karl K. Vigen PhD, Nicholas Hendren MD, Cathlyn  
Leitzke MS, Ying-qi Zhao PhD, Zhanhai Li PhD, John M. Centanni MS, Derek J. Hei  
PhD, Denise Schwahn DVM, PhD, Jaehyup Kim MD, Peiman Hematti MD, Amish N.  
Raval MD\*

\*Division of Cardiovascular Medicine, Department of Medicine, University of Wisconsin  
School of Medicine and Public Health, Madison, WI, USA; Department of Biomedical  
Engineering, University of Wisconsin, Madison, WI, USA

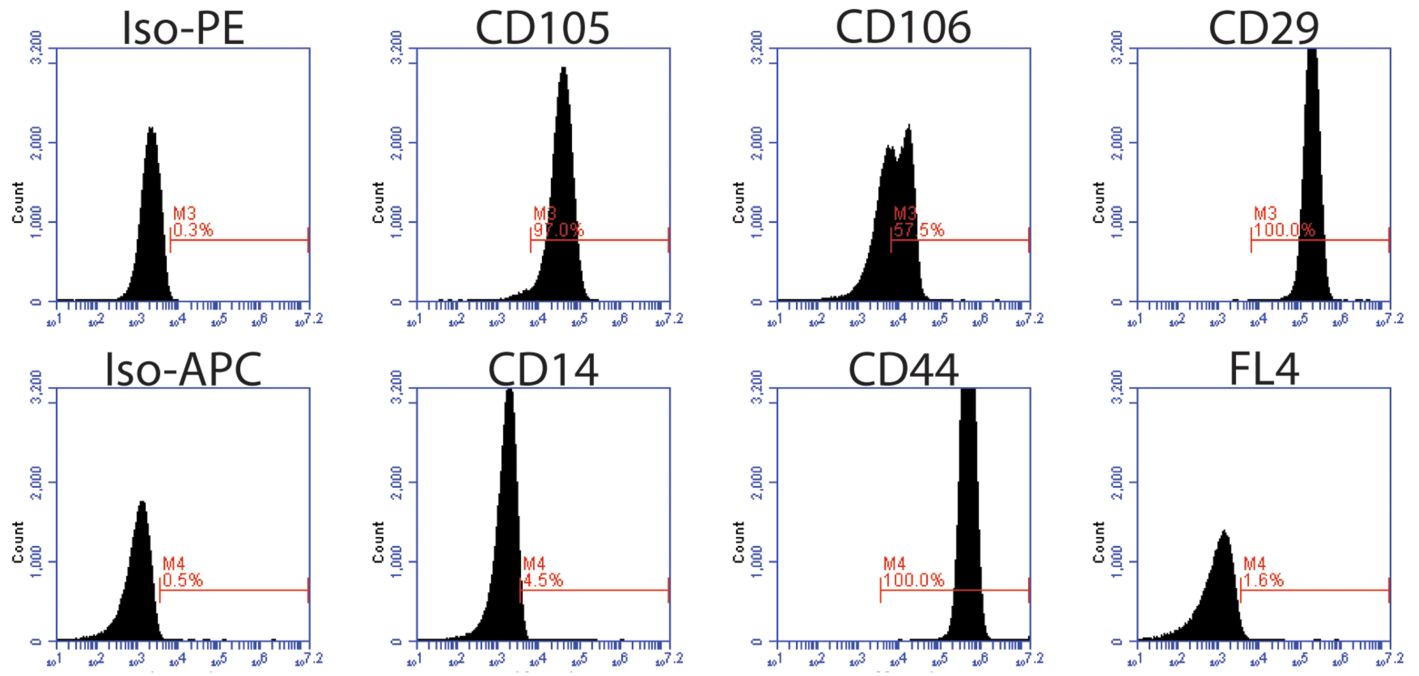
Supplemental figures:



Supplemental Fig. 1 Venous blood sampling for systemic white blood cells (WBC) immune response and serological analysis



Supplemental Figure 2. Quantitative systematic histological analysis.



**Supplemental Figure 3.** Flow cytometry characterization of porcine MSCs.