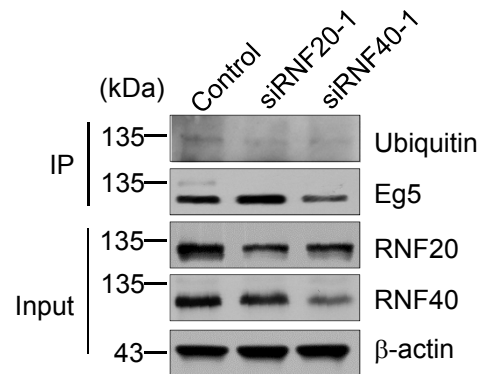


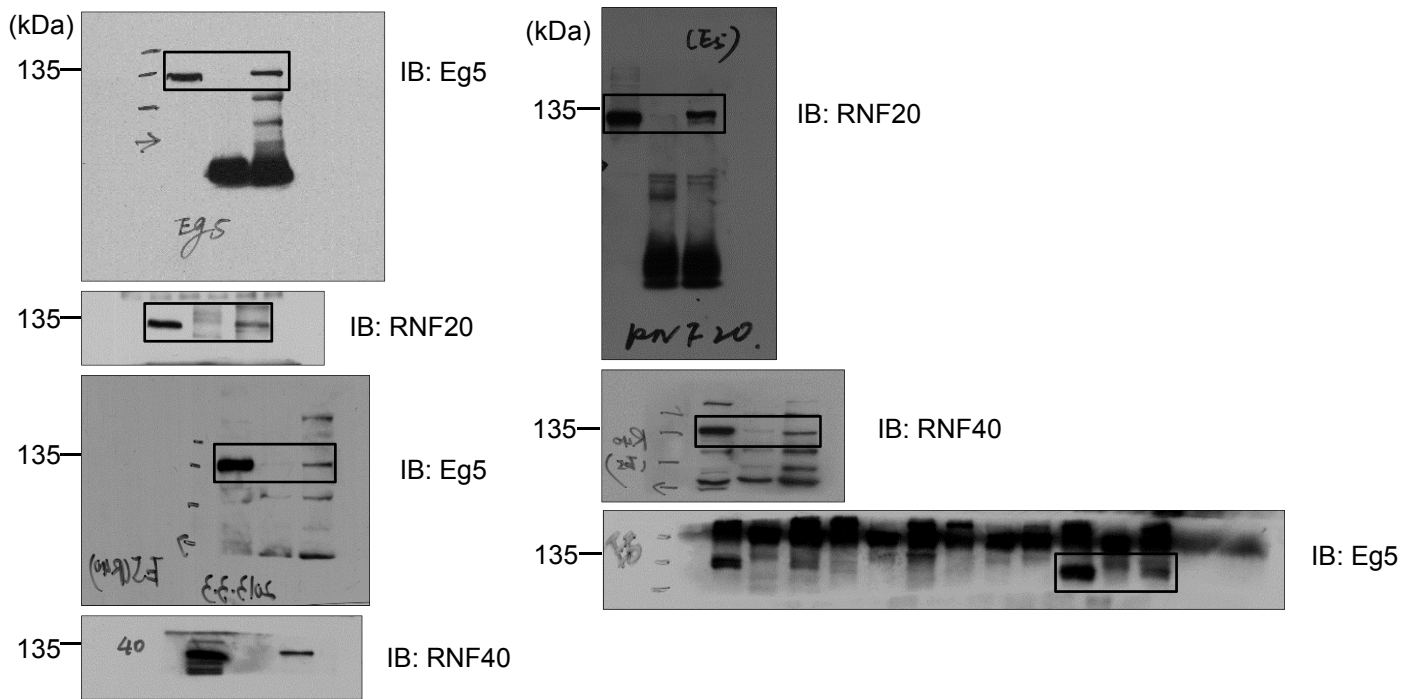
Supplementary Figure 1



Supplementary Figure 1. The monoubiquitination of Eg5 is decreased upon RNF20/40 depletion. MCF-7 cells transfected with control or RNF20/40 siRNAs were treated with MG132, and then cell lysates were subjected to immunoprecipitation with anti-Eg5 followed by immunoblotting with anti-ubiquitin and anti-Eg5.

Supplementary Figure 2

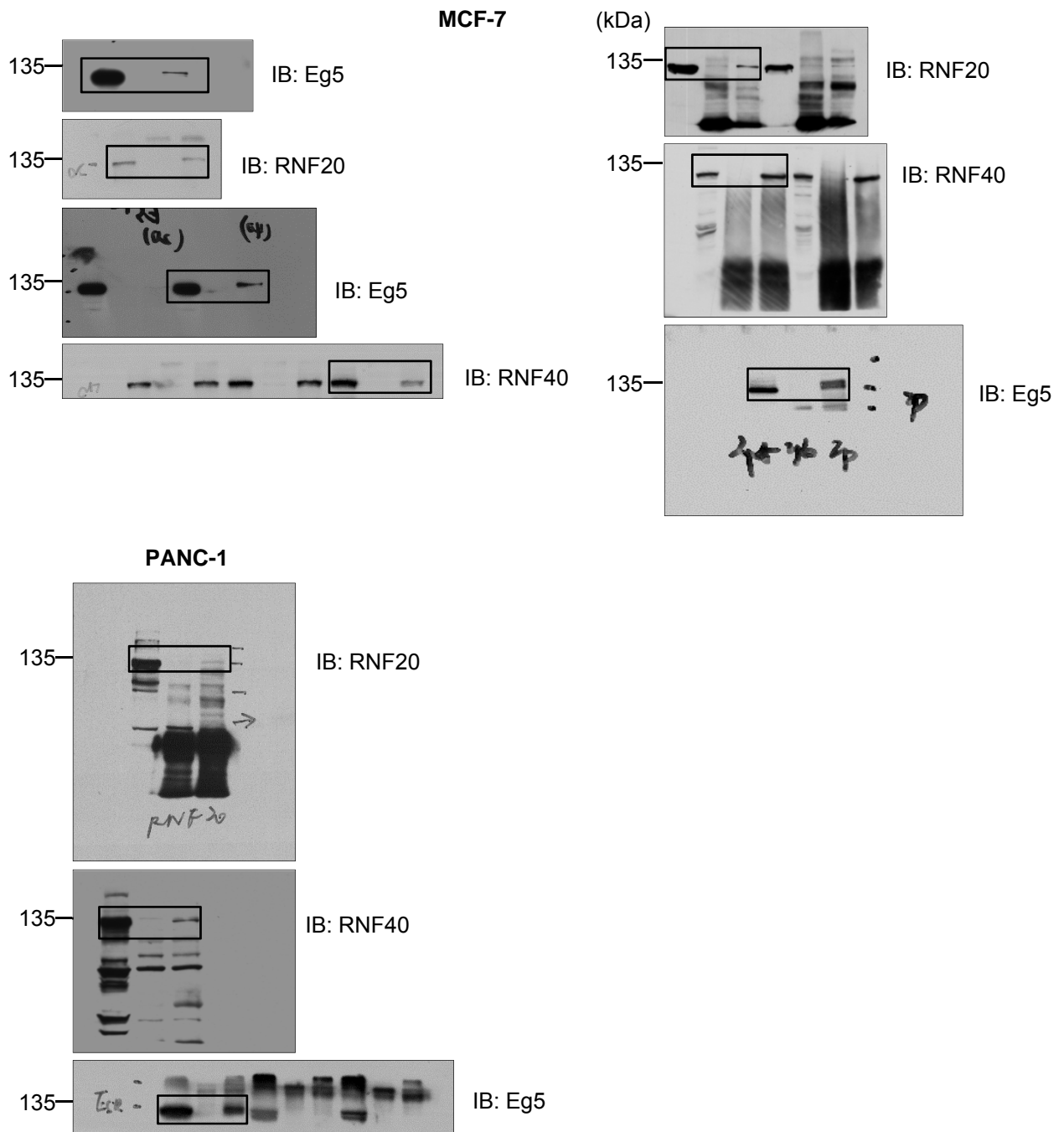
Figure 1b
HeLa



Supplementary Figure 2. Uncropped scans of blots. Uncropped scans of Figure 1b (IPs in HeLa cells).

Supplementary Figure 3

Figure 1b



Supplementary Figure 3. Uncropped scans of blots. Uncropped scans of Figure 1b (IPs in MCF-7 and PANC-1 cells).

Supplementary Figure 4

Figure 1c

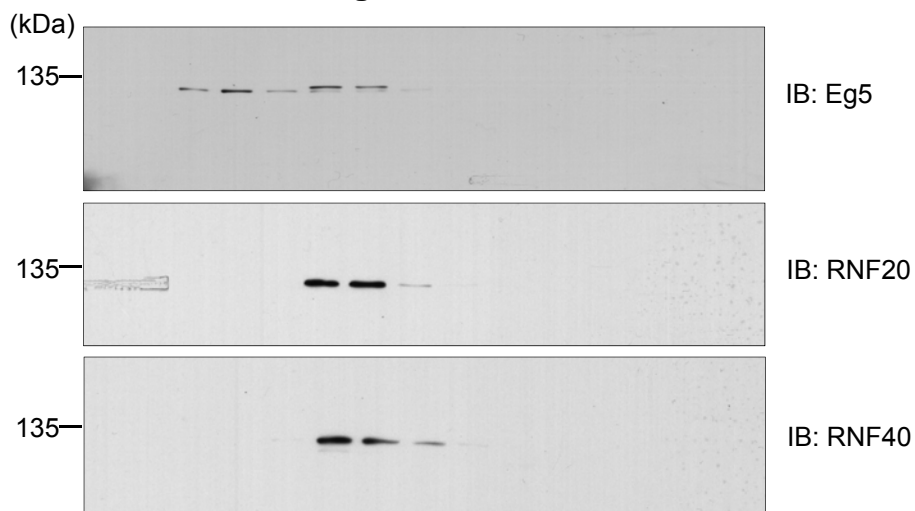
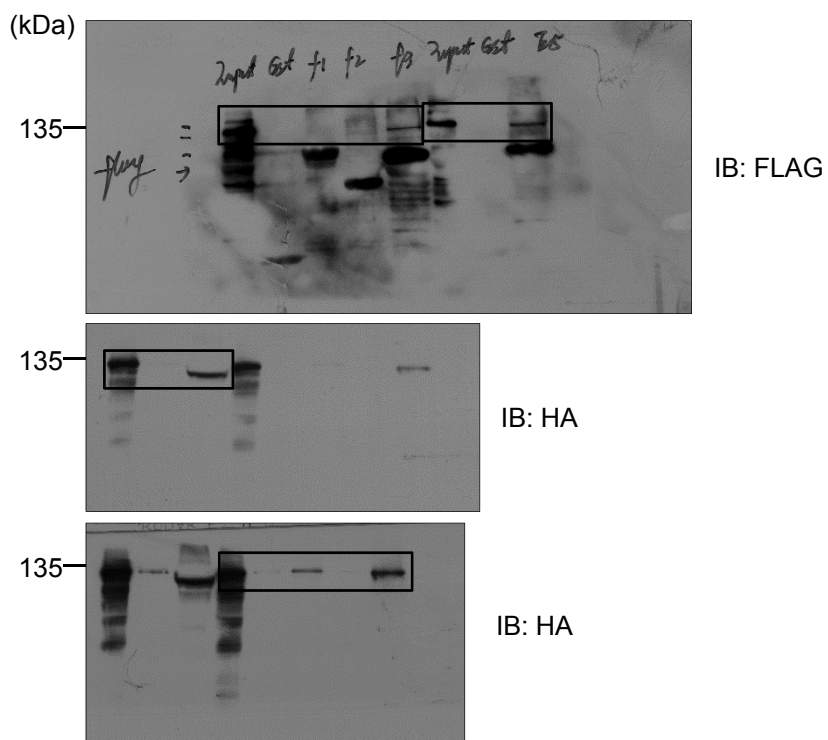
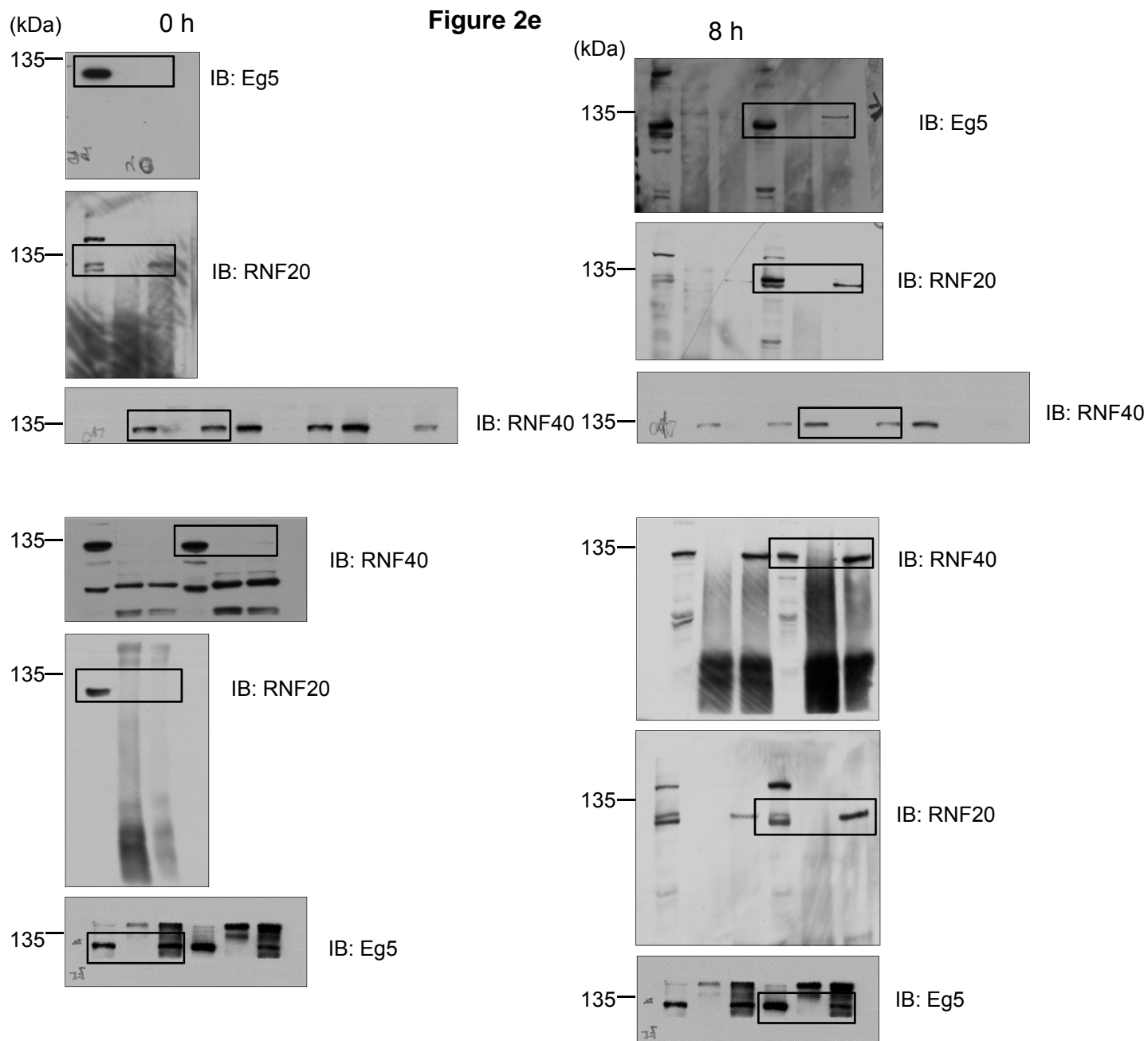


Figure 1d



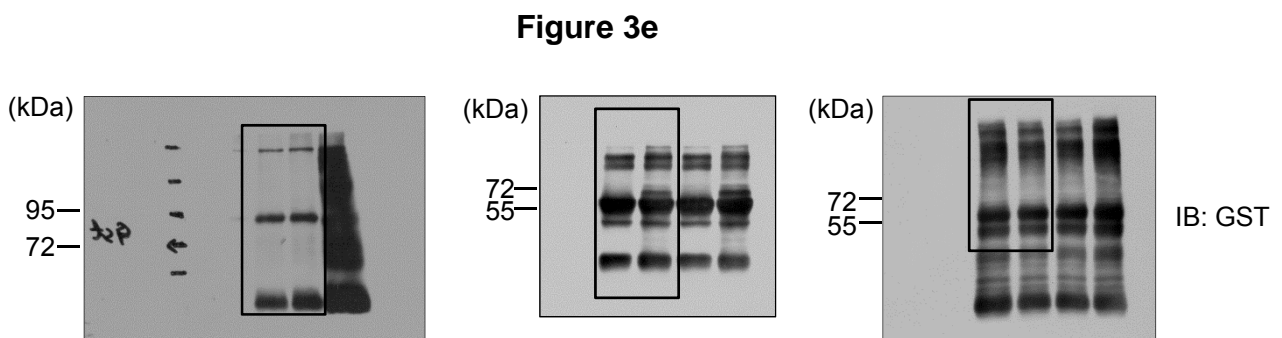
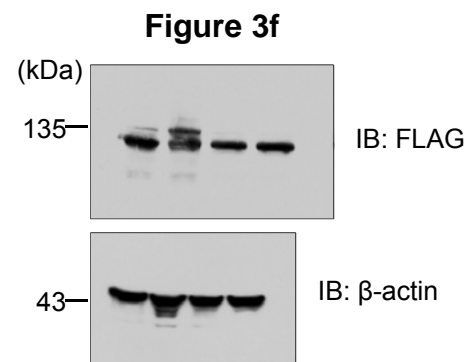
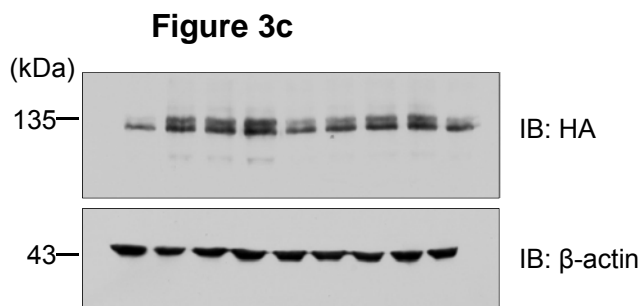
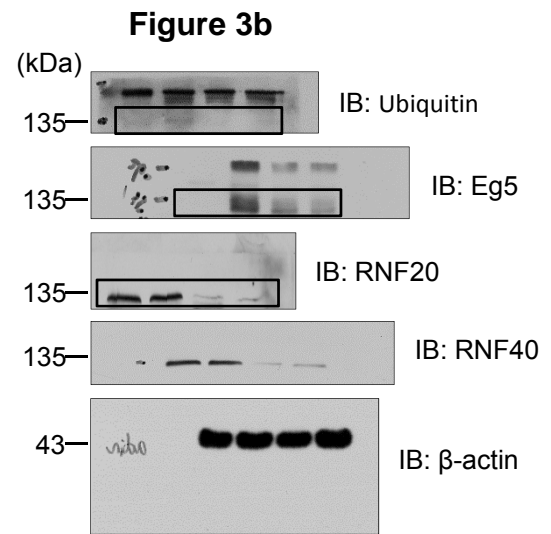
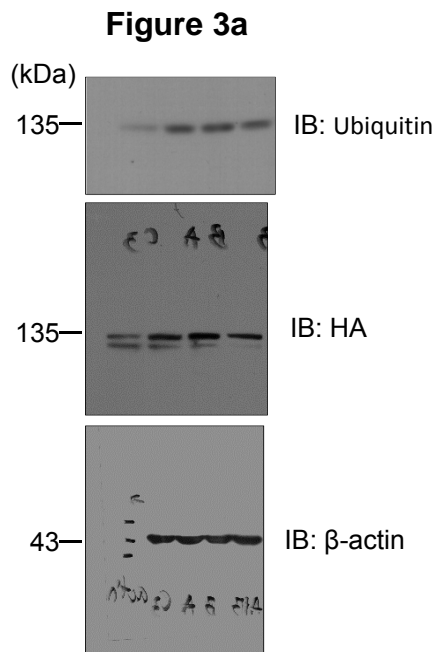
Supplementary Figure 4. Uncropped scans of blots. Uncropped scans of Figure 1c and Figure 1d.

Supplementary Figure 5



Supplementary Figure 5. Uncropped scans of blots. Uncropped scans of Figure 2e.

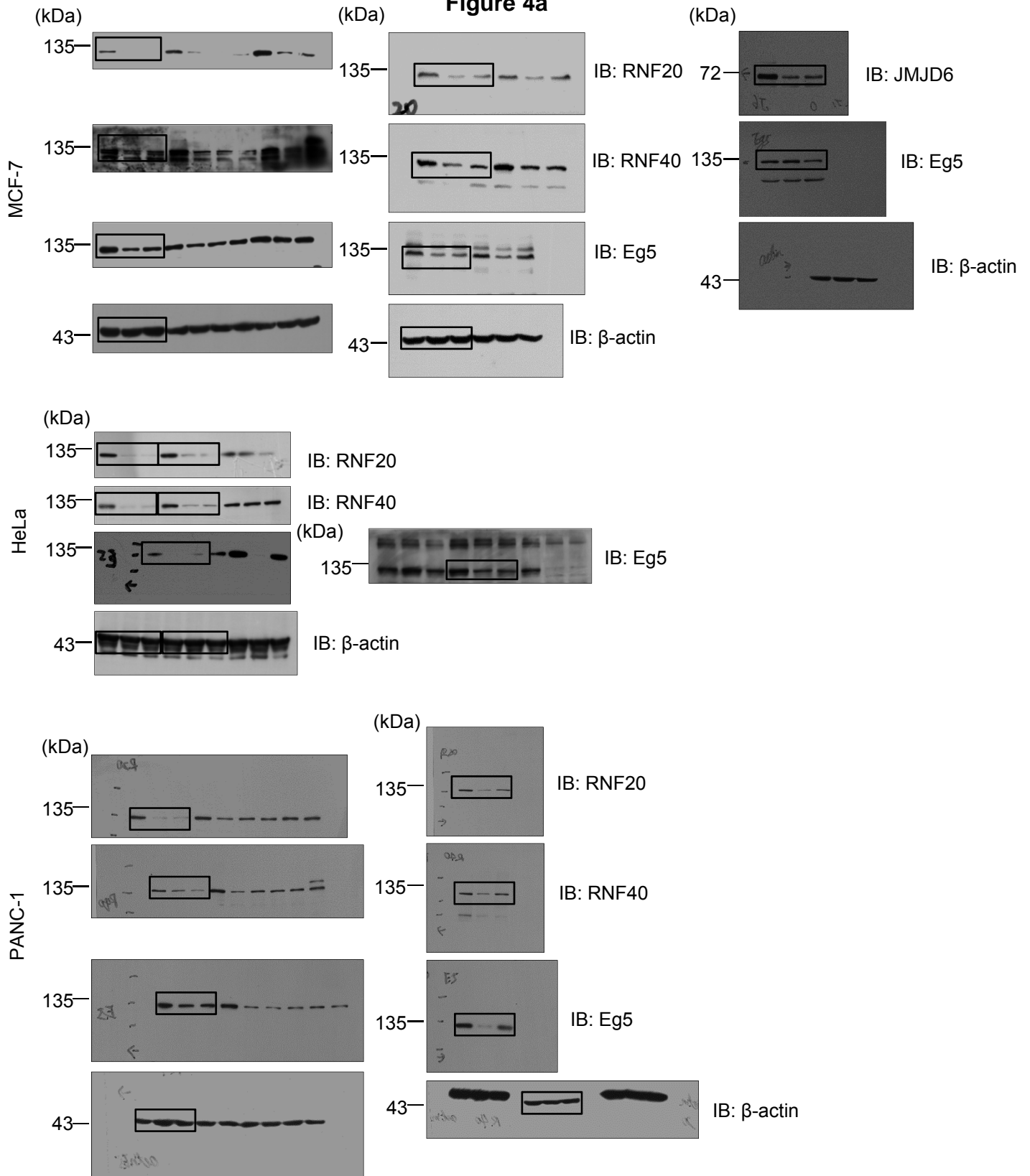
Supplementary Figure 6



Supplementary Figure 6. Uncropped scans of blots. Uncropped scans of Figure 3a, Figure 3b, Figure 3c, Figure 3e, and Figure 3f.

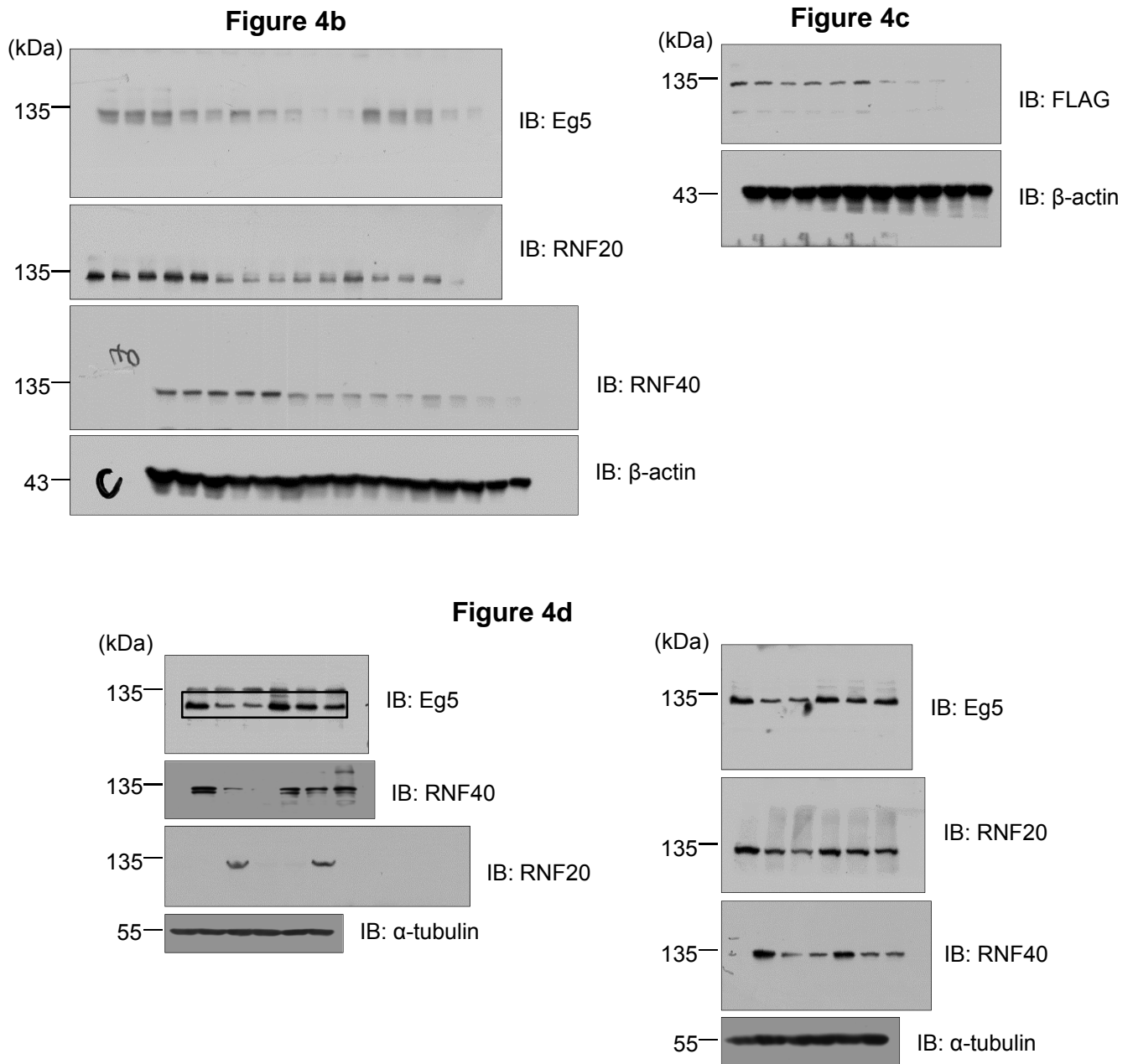
Supplementary Figure 7

Figure 4a



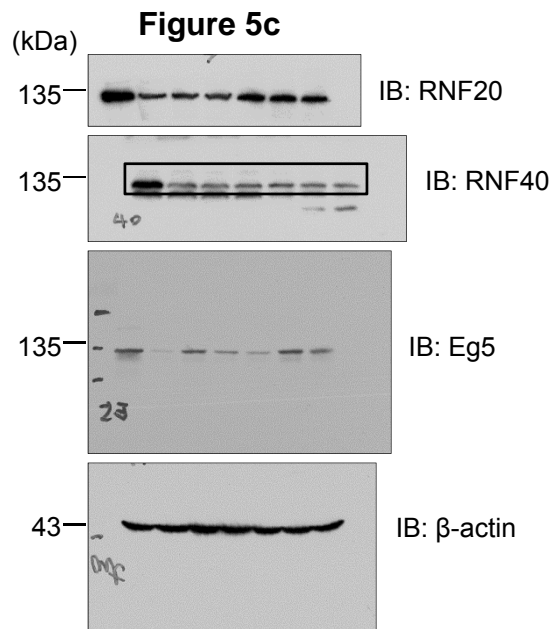
Supplementary Figure 7. Uncropped scans of blots. Uncropped scans of Figure 4a.

Supplementary Figure 8



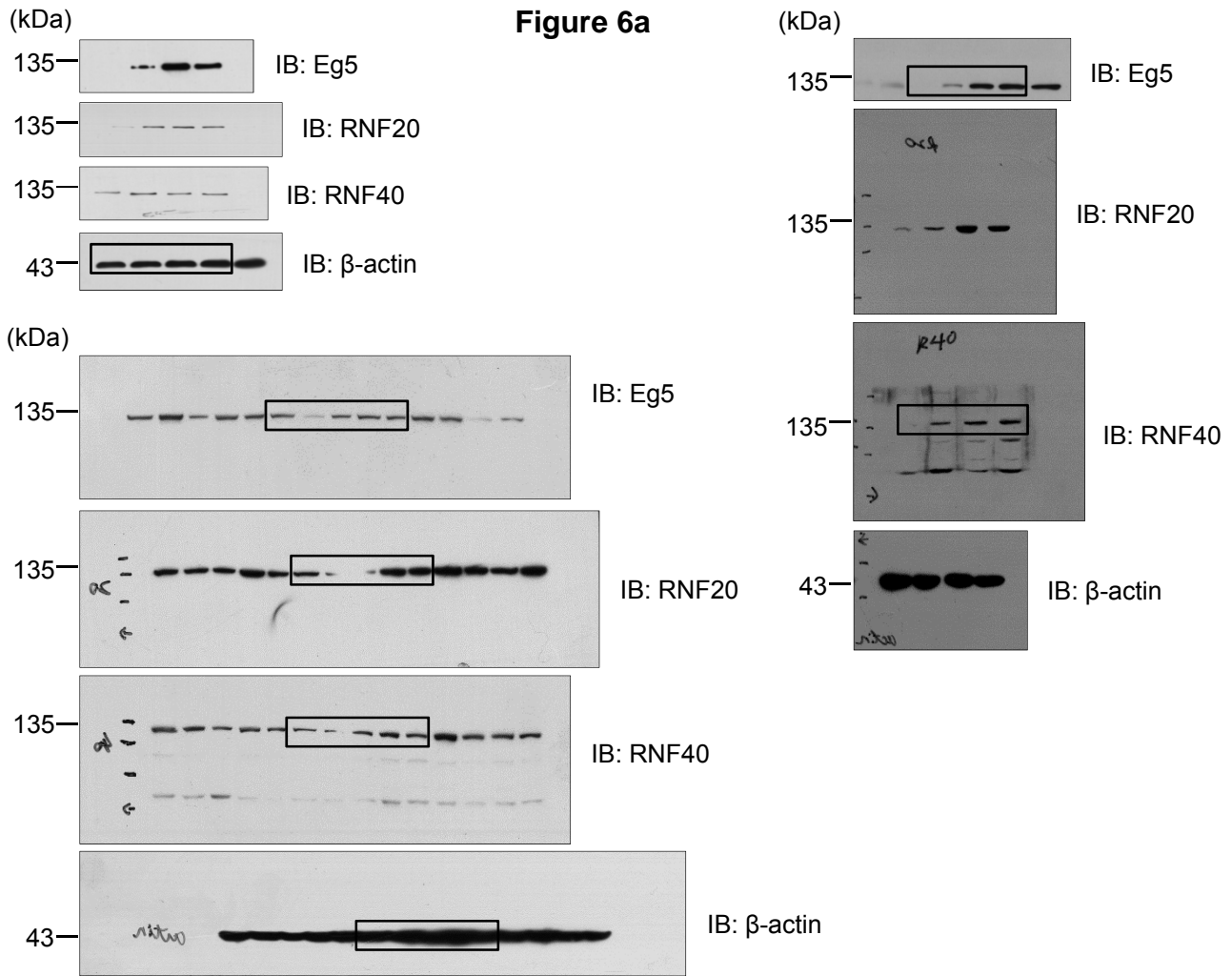
Supplementary Figure 8. Uncropped scans of blots. Uncropped scans of Figure 4b, Figure 4c, and Figure 4d.

Supplementary Figure 9



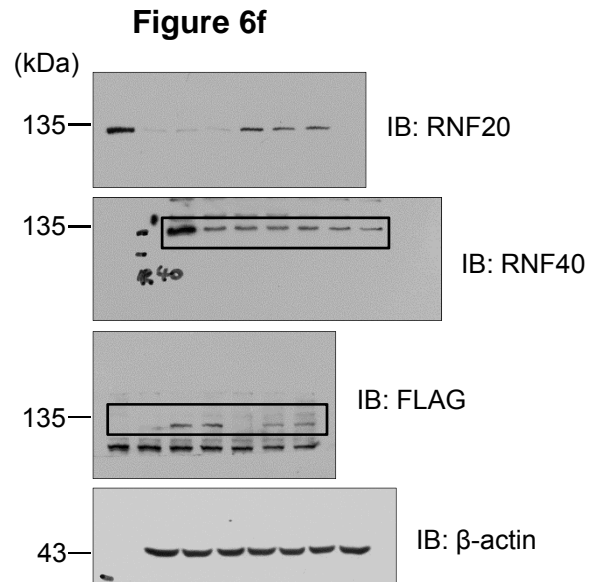
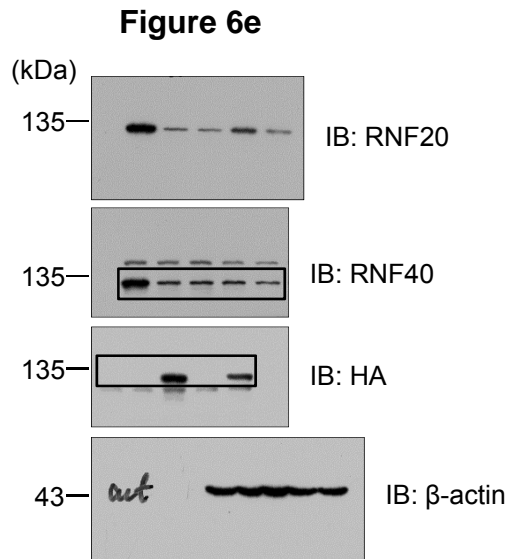
Supplementary Figure 9. Uncropped scans of blots. Uncropped scans of Figure 5c.

Supplementary Figure 10

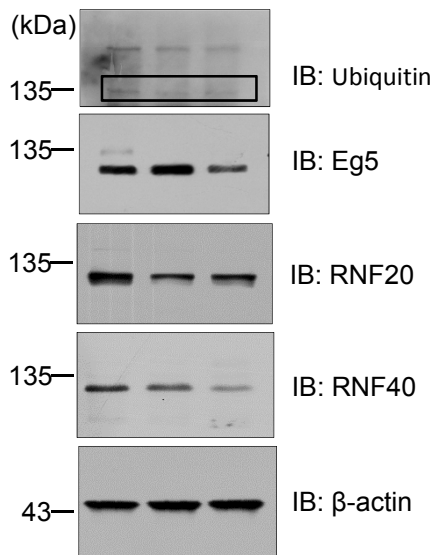


Supplementary Figure 10. Uncropped scans of blots. Uncropped scans of Figure 6a.

Supplementary Figure 11



Supplementary Figure 1



Supplementary Figure 11. Uncropped scans of blots. Uncropped scans of Figure 6e, Figure 6f, and Supplementary Figure 1.