

The efficacy and safety of proton-pump inhibitors in treating patients with non-erosive reflux disease: a network meta-analysis

Lingxiao Chen¹, MD; Yujie Chen², MD; Bo Li³, MD

Lingxiao Chen and Yujie Chen contributed equally.

1. Tianjin Medical University, Tianjin, China.
2. Department of Oncology, Tianjin Medical University General Hospital, Tianjin, China.
3. Department of Gastroenterology, China Academy of Chinese Medical Sciences Xiyuan Hospital, Beijing, China.

Correspondence to: Dr Bo Li, associate chief physician, China Academy of Chinese Medical Sciences Xiyuan Hospital, Beijing (100091), China. Email: dr.libo@vip.163.com

SUPPORTING INFORMATION

Additional Supporting Information may be found in the online version of this article:

Figure S1. Inconsistency test based on loop-specific approach for rate of symptomatic relief. A: Dexlansoprazole 30mg, B: Dexlansoprazole 60mg, C: Esomeprazole 20mg, D: Esomeprazole 40mg, E: Lansoprazole 15mg, F: Lansoprazole 30mg, G: Omeprazole 10mg, H: Omeprazole 20mg, I: Placebo, J: Rabeprazole 10mg, K: Rabeprazole 20mg, L: Rabeprazole 5mg.

Figure S2. Network plot for rate of adverse events. A: Dexlansoprazole 30mg, B: Dexlansoprazole 60mg, C: Esomeprazole 20mg, D: Esomeprazole 40mg, E: Lansoprazole 15mg, F: Lansoprazole 30mg, G: Omeprazole 10mg, H: Omeprazole 20mg, I: Placebo, J: Rabeprazole 10mg, K: Rabeprazole 20mg, L: Rabeprazole 5mg.

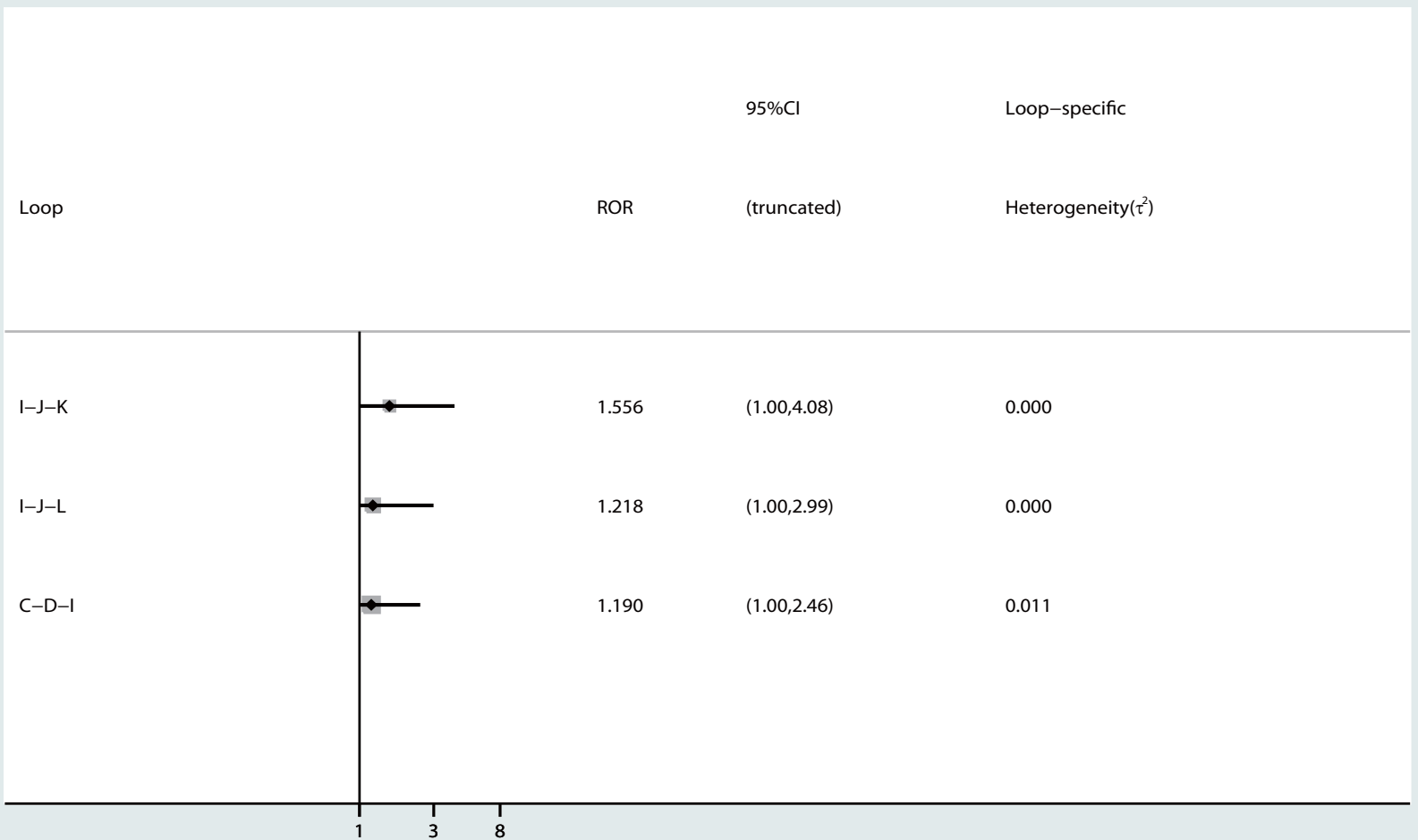
Figure S3. Inconsistency test based on loop-specific approach for rate of adverse events. A: Dexlansoprazole 30mg, B: Dexlansoprazole 60mg, C: Esomeprazole 20mg, D: Esomeprazole 40mg, E: Lansoprazole 15mg, F: Lansoprazole 30mg, G: Omeprazole 10mg, H: Omeprazole 20mg, I: Placebo, J: Rabeprazole 10mg, K: Rabeprazole 20mg, L: Rabeprazole 5mg.

Figure S4. SUCRA rank plot for rate of symptomatic relief. Rab 5: Rabeprazole 5mg; Rab 10: Rabeprazole 10mg; Rab 20: Rabeprazole 20mg; Pla: Placebo; Dex 30: Dexlansoprazole 30mg; Dex 60: Dexlansoprazole 60mg; Ome 10: Omeprazole 10mg; Ome 20: Omeprazole 20mg; Lan 15: Lansoprazole 15mg; Lan 30: Lansoprazole 30mg; Eso 20: Esomeprazole 20mg; Eso 40: Esomeprazole 40mg.

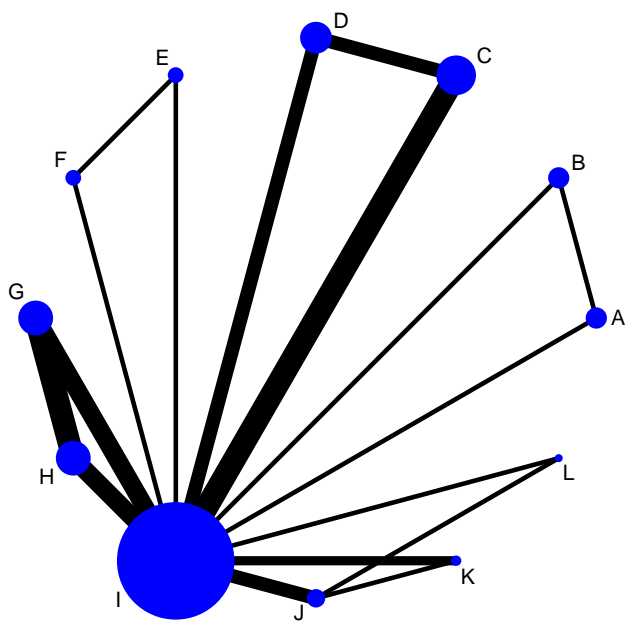
Figure S5. SUCRA rank plot for rate of adverse events. Rab 5: Rabeprazole 5mg; Rab

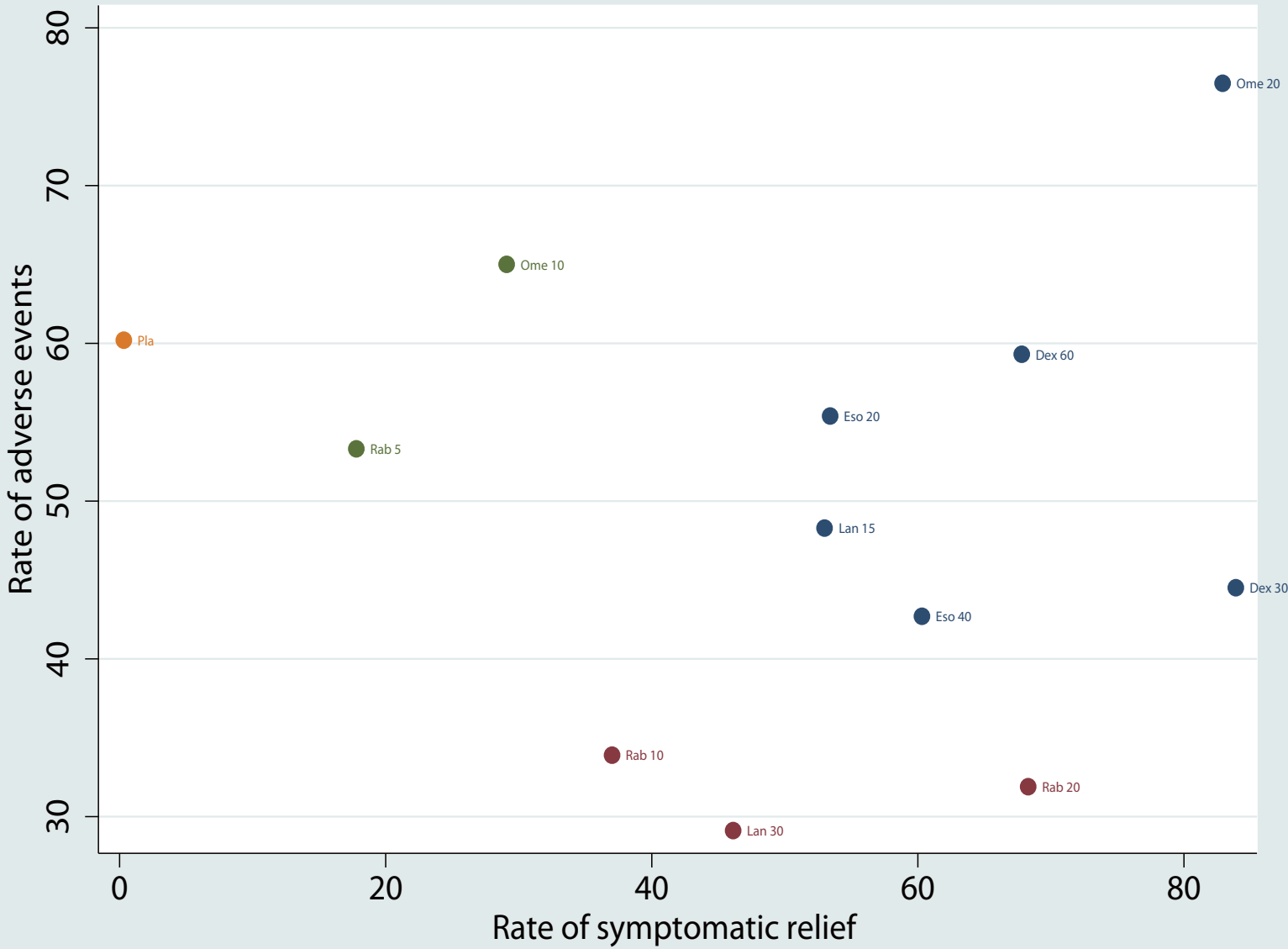
10: Rabeprazole 10mg; Rab 20: Rabeprazole 20mg; Pla: Placebo; Dex 30: Dexlansoprazole 30mg; Dex 60: Dexlansoprazole 60mg; Ome 10: Omeprazole 10mg; Ome 20: Omeprazole 20mg; Lan 15: Lansoprazole 15mg; Lan 30: Lansoprazole 30mg; Eso 20: Esomeprazole 20mg; Eso 40: Esomeprazole 40mg.

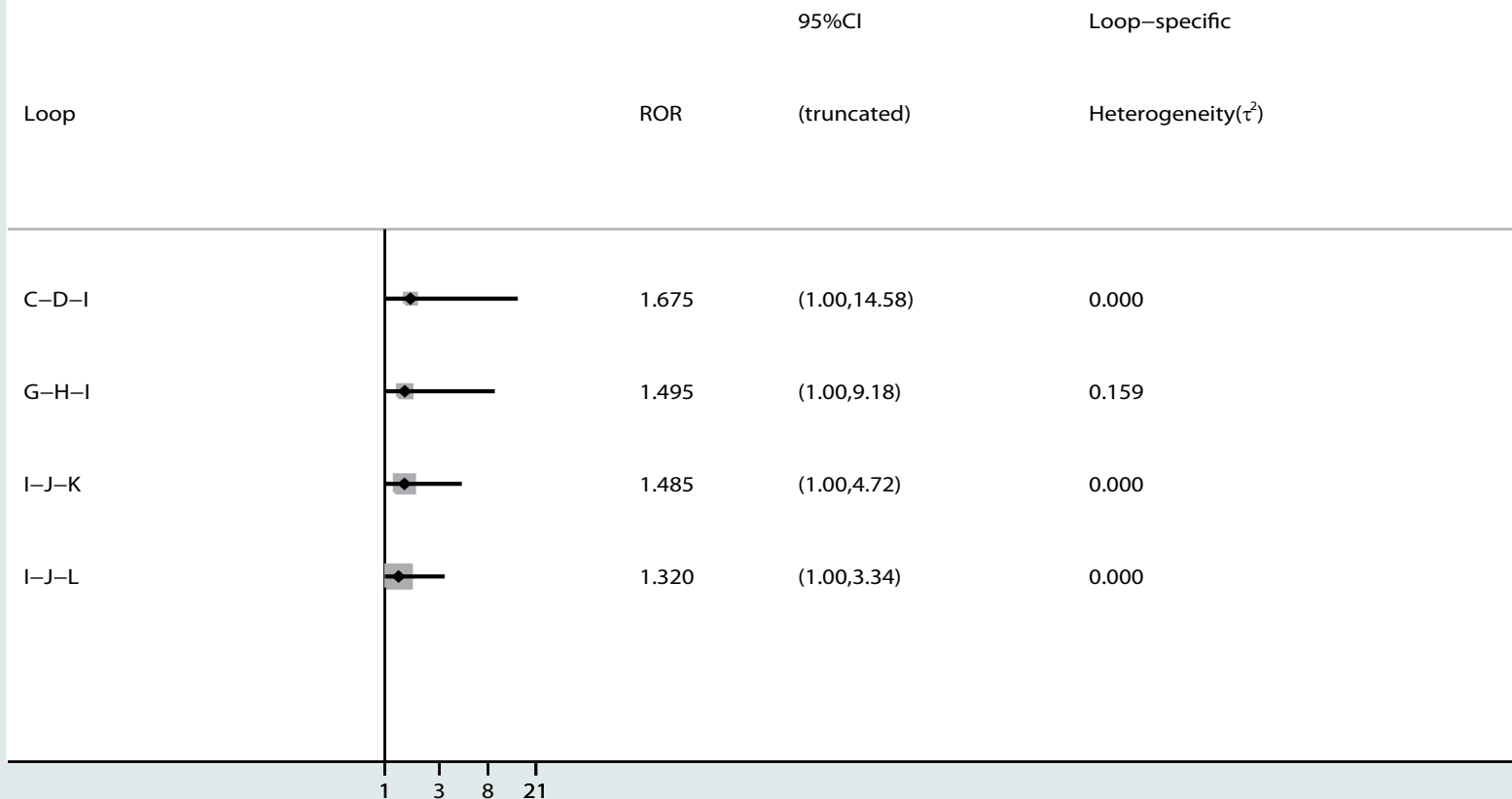
Figure S6. Cluster plot combining with rate of symptomatic relief and rate of adverse events. Rab 5: Rabeprazole 5mg; Rab 10: Rabeprazole 10mg; Rab 20: Rabeprazole 20mg; Pla: Placebo; Dex 30: Dexlansoprazole 30mg; Dex 60: Dexlansoprazole 60mg; Ome 10: Omeprazole 10mg; Ome 20: Omeprazole 20mg; Lan 15: Lansoprazole 15mg; Lan 30: Lansoprazole 30mg; Eso 20: Esomeprazole 20mg; Eso 40: Esomeprazole 40mg.



*** Loop(s) [A-B-I] [E-F-I] [G-H-I] are formed only by multi-arm trial(s) – Consistent by definition

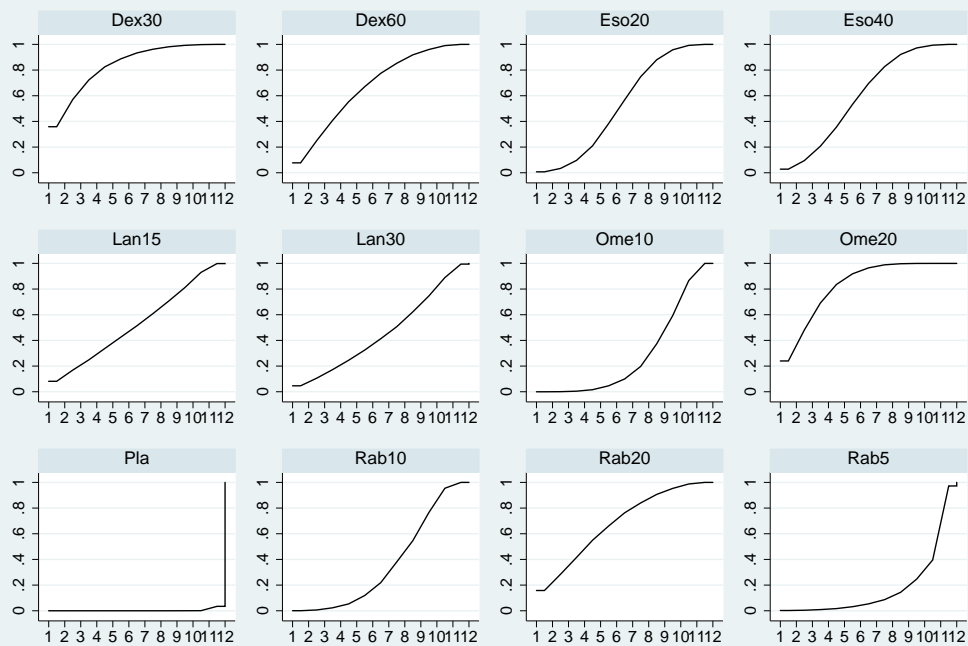






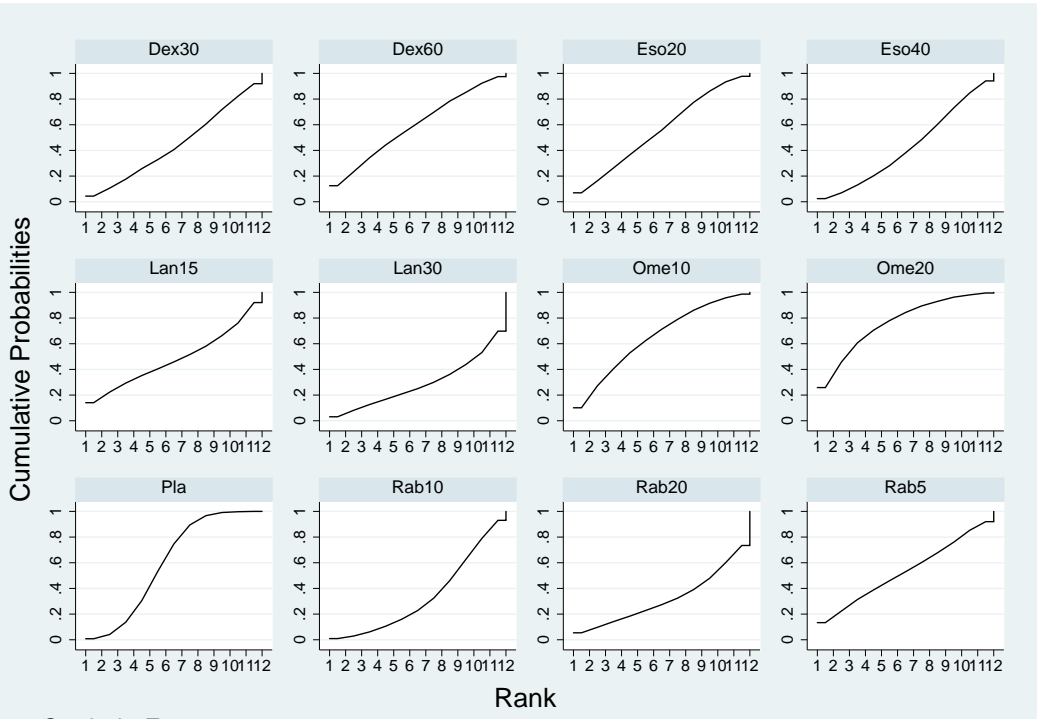
*** Loop(s) [A-B-I] [E-F-I] are formed only by multi-arm trial(s) – Consistent by definition

Cumulative Probabilities



Rank

Graphs by Treatment



Graphs by Treatment