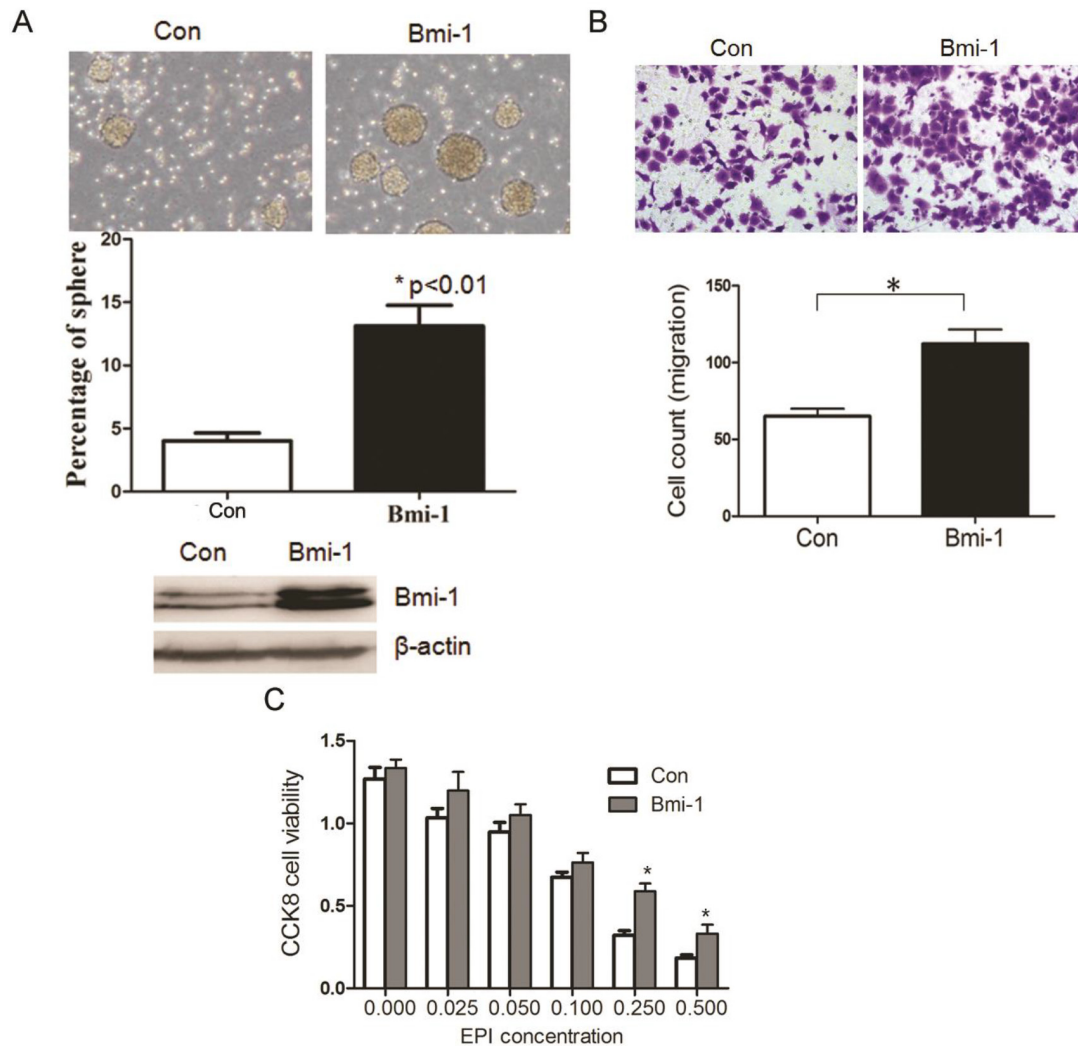


## Antitumor activity and inhibitory effects on cancer stem cells-like properties of Adeno-associated virus (AAV) -mediated Bmi-1 interference driven by Bmi-1 promoter for gastric cancer

### Supplementary Materials



**Supplementary Figure S1: Bmi-1 maintains the properties of cancer stem cell-like cells.** (A) Bmi-1 overexpression increases the size and number of spheres in MKN45 cells. Overexpression of Bmi-1 was tested in gastric cancer cells and measured by Western blot. (B) Bmi-1 overexpression in MKN45 increase of gastric cancer migration ability using a Transwell *in vitro* migration model. (C) Bmi-1 overexpression confers gastric cancer cells to chemotherapy resistance. Bmi-1 overexpressed cells and control cells was treated by Epirubicin (EPI) for 72 h at different concentrations and detected by CCK8 assay. \* $P < .05$ .