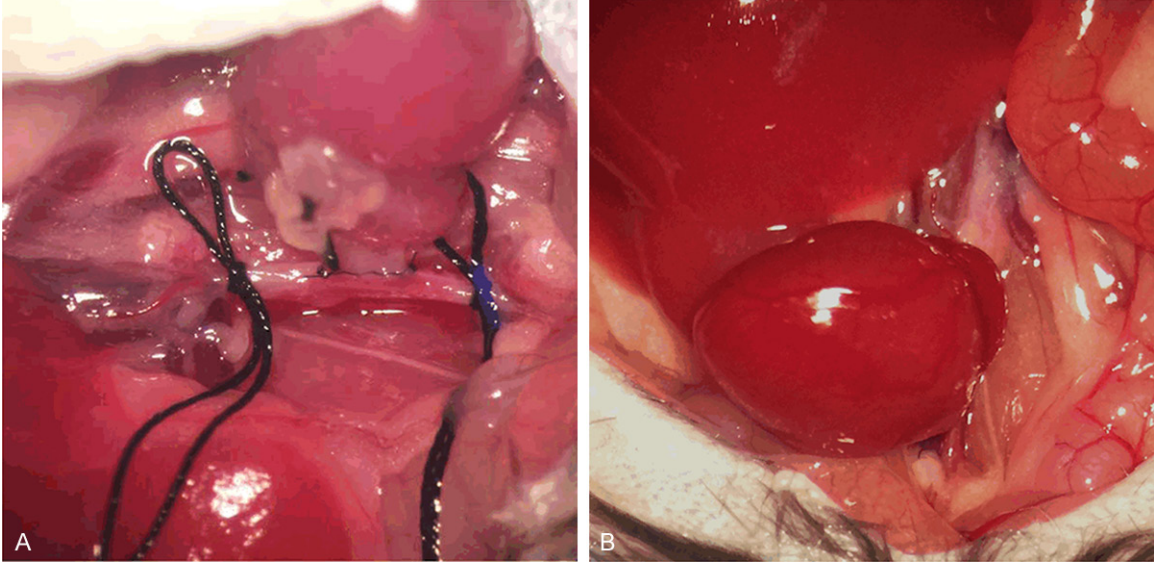
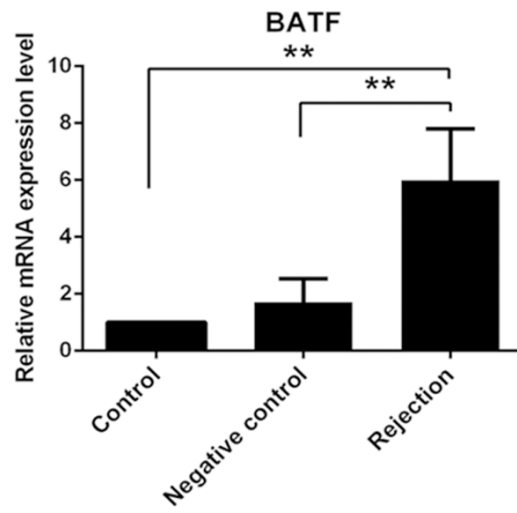


BATF inhibition prevent allograft rejection

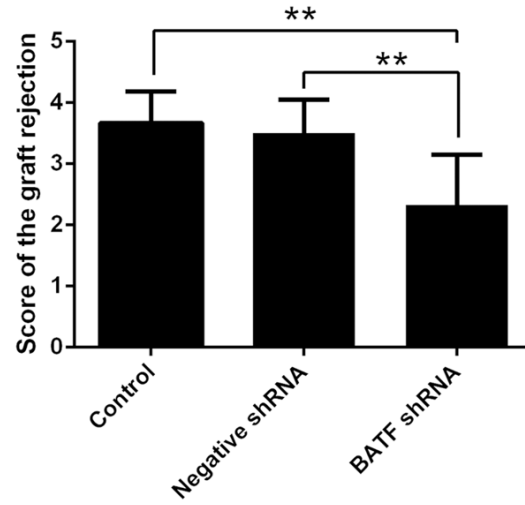


Supplementary Figure 1. The mice model of heterotopic cardiac transplantation. A. The vascular anastomosis was shown in the transplantation. B. The heterotopic cardiac graft after transplantation.

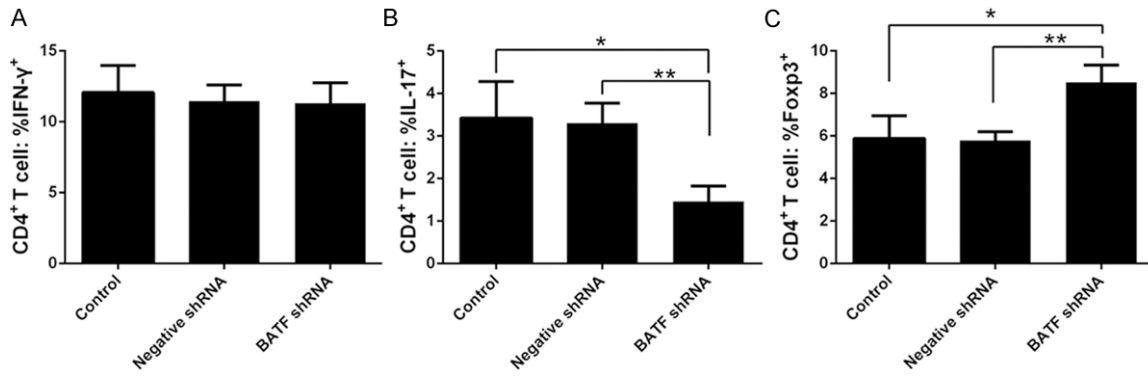


Supplementary Figure 2. The expression level of BATF in the cardiac graft. The BATF level in the rejection model mice was increased compared with negative control and control cardiac. The results are presented as mean \pm SD. **p<0.01.

BATF inhibition prevent allograft rejection



Supplementary Figure 3. BATF shRNA treatment reduces scored of the graft rejection.



Supplementary Figure 4. BATF inhibition interferes the Th17/Treg responses.