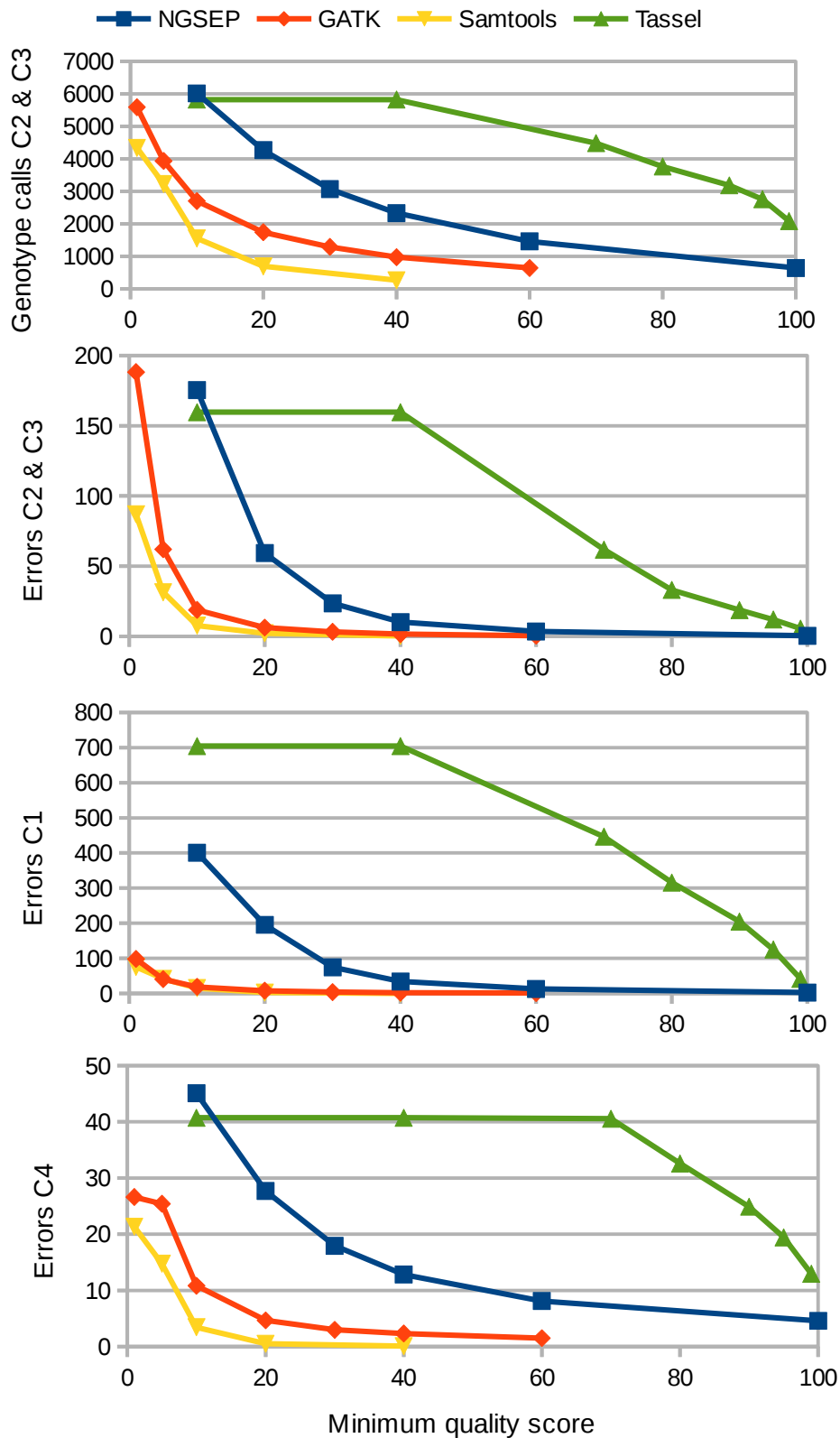
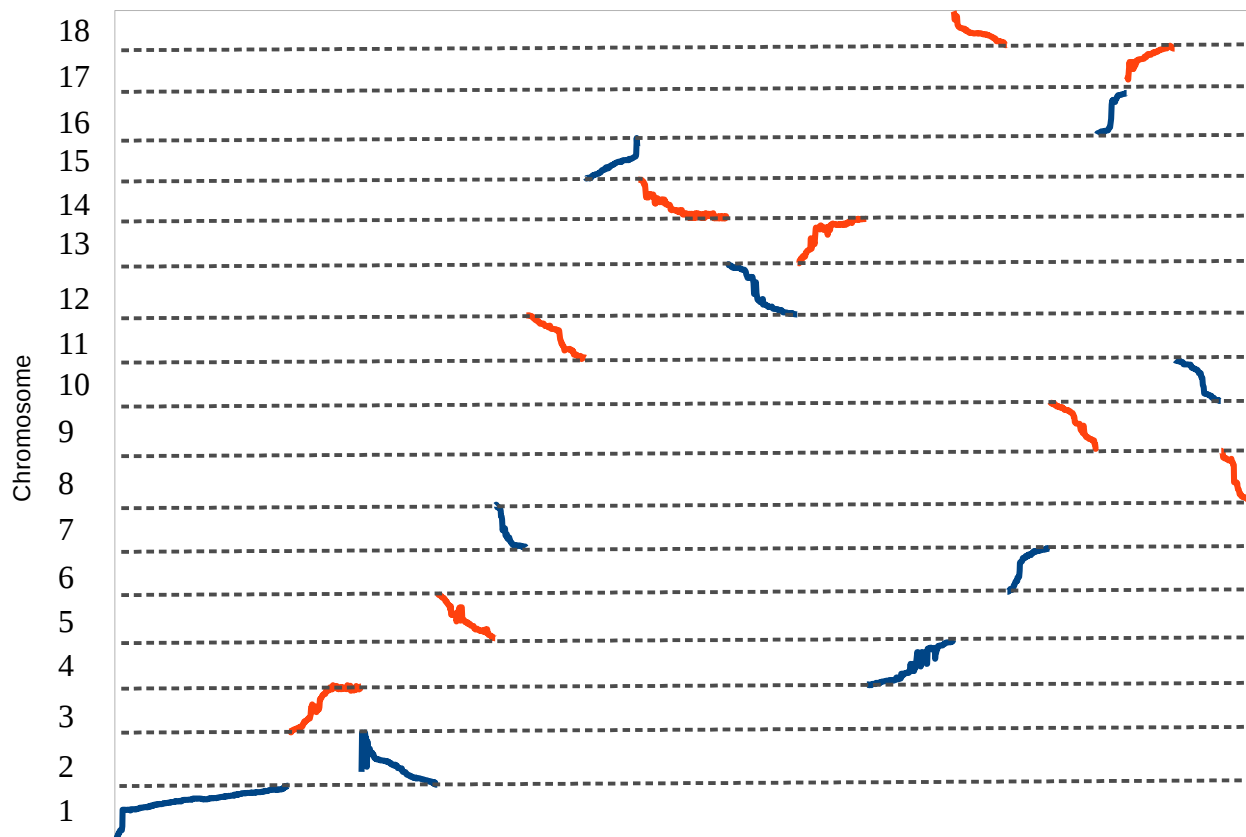


**Supplementary figure 1.** Number of genotype calls and number of errors for different quality scores on the datasets obtained from the analysis of the cassava K family population. All values in the Y axis are thousands of genotype calls



**Supplementary figure 2.** Dot plot of predicted genomic sites in the latest cassava reference genome (v6.1) for the SNPs organized in the 18 linkage groups obtained after the construction of a draft genetic map using the genotype calls predicted by NGSEP on the cassava NxA population



**Supplementary figure 3.** Schematic of the development of the common bean MAGIC population

