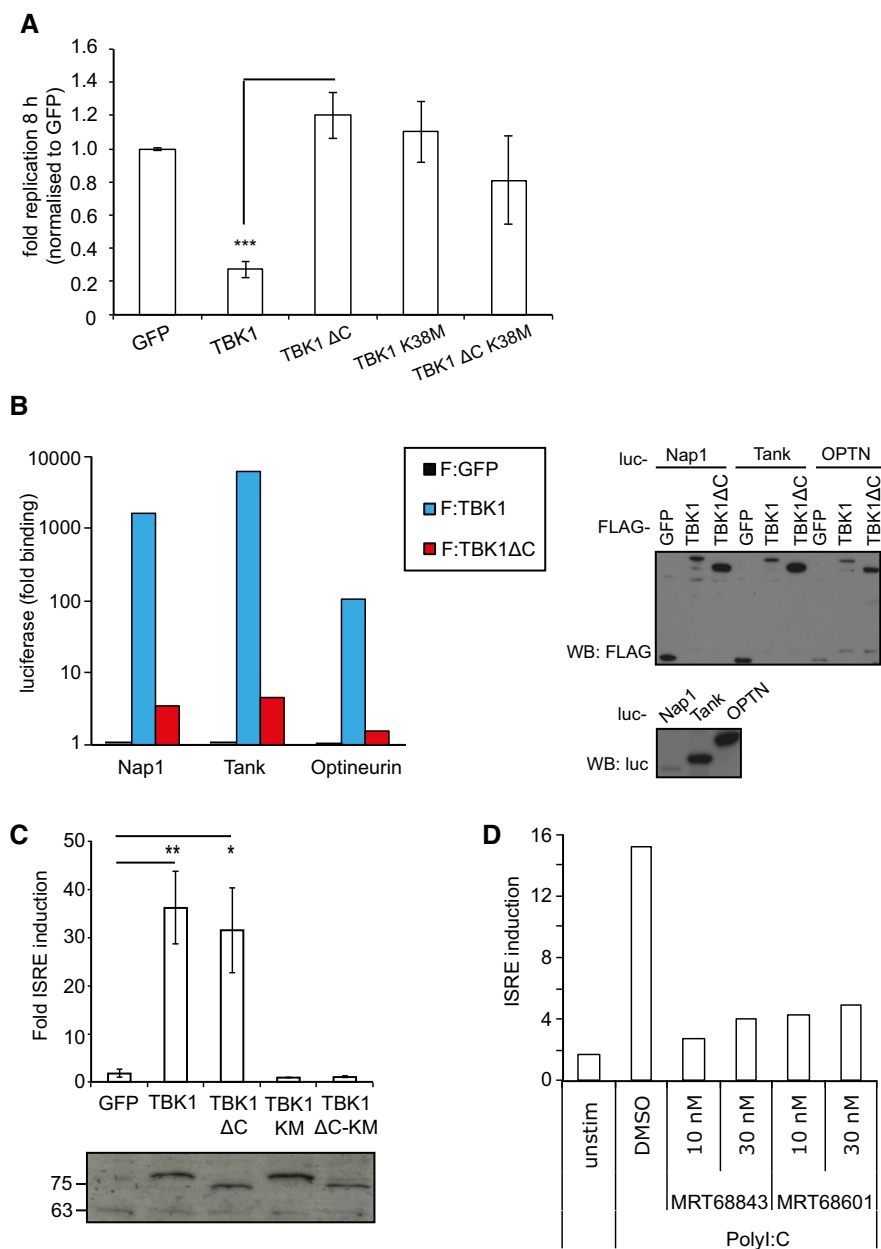


Expanded View Figures

**Figure EV1. Characterization of TBK1 alleles.**

- A Replication of *Salmonella enterica* serovar Typhimurium in *Tbk1*^{-/-} MEFs complemented with the indicated Flag-tagged TBK1_{ΔC} fusion proteins. Replication normalized to cells expressing GFP. Mean and SEM. *N* = 3, ****P* < 0.001 one-way ANOVA with Dunnett's multiple comparisons test.
- B Lumier binding assay. Binding of luciferase-tagged Nap1, Tank, or optineurin to beads coated with Flag:GFP, Flag:TBK1, or Flag:TBK1_{ΔC}. Western blot for luciferase-tagged or Flag-tagged proteins in total cell lysates.
- C ISRE reporter induction upon transient expression of the indicated Flag:TBK1 alleles into 293ET cells. Western blot for Flag-tagged proteins. Mean and SEM of four independent experiments. **P* < 0.05, ***P* < 0.01, Student's *t*-test.
- D ISRE reporter induction upon stimulation of 293ET cells with poly:I:C (8 h) in the presence of DMSO or TBK1 inhibitors MRT68843 or MRT68601.

Figure EV2. Recruitment of WIPI1 and WIPI2B to *Salmonella enterica* serovar Typhimurium requires TBK1 but not optineurin.

- A Western blots of GFP-tagged WIPI alleles and Flag-tagged TBK1 alleles corresponding to Fig 2B.
- B Percentage of WIPI2-positive *S. Typhimurium* at 1 h p.i., in *Tbk1*^{-/-} MEFs complemented with the indicated Flag-tagged TBK1 proteins. Wortmannin (Wort) was added as indicated at 100 nM. Mean and SEM. *N* = 3, **P* < 0.05, one-way ANOVA with Dunnett's multiple comparisons test. Western blot of TBK1 alleles in post-nuclear lysates.
- C, D Analysis of MEFs, stably expressing GFP:WIPI1 or GFP:WIPI2B, treated with the indicated siRNAs and infected with *S. Typhimurium* for 1 h. Mean and SEM. *N* = 3. Western blot for optineurin and tubulin upon the indicated siRNA treatment.

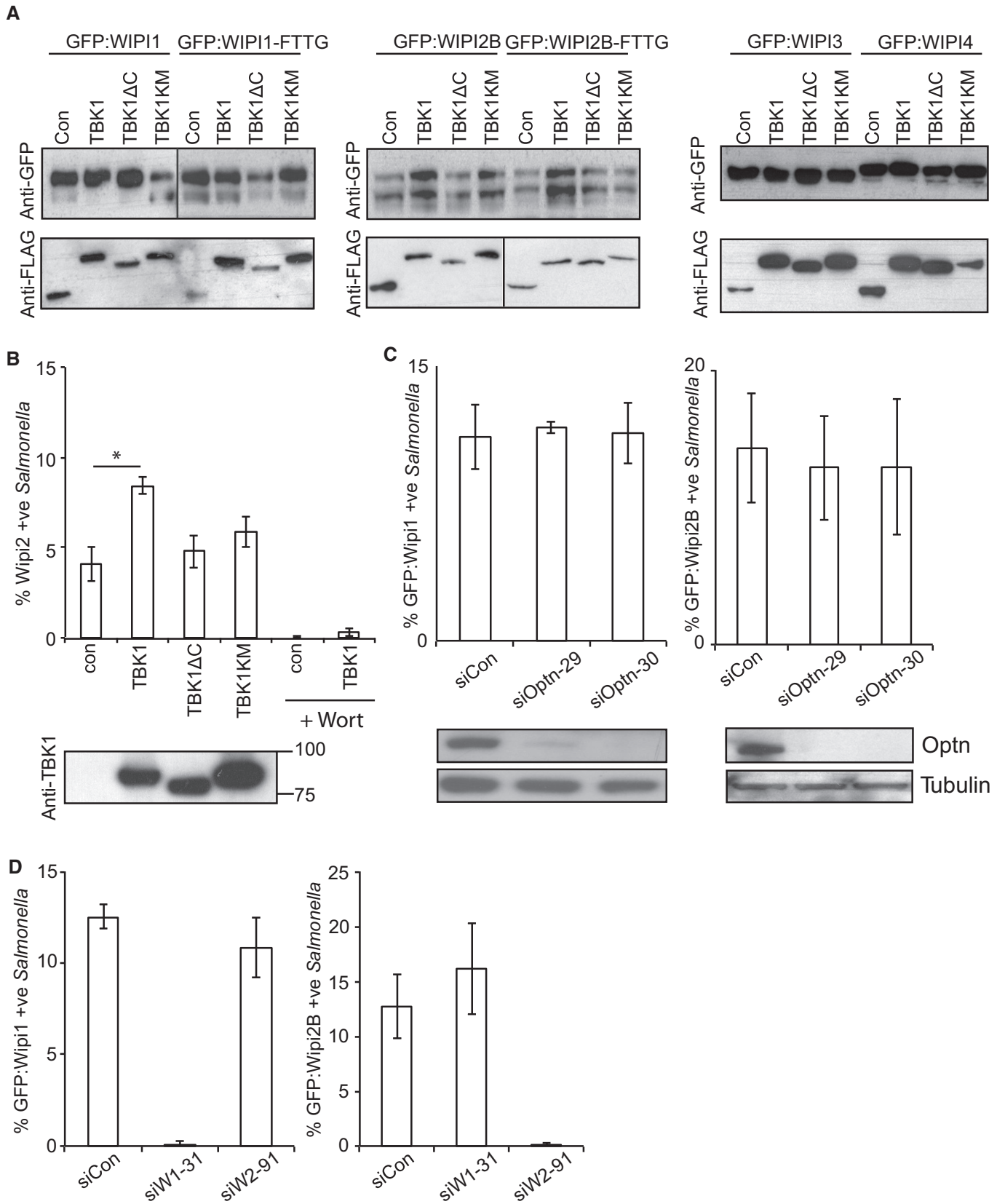


Figure EV2.

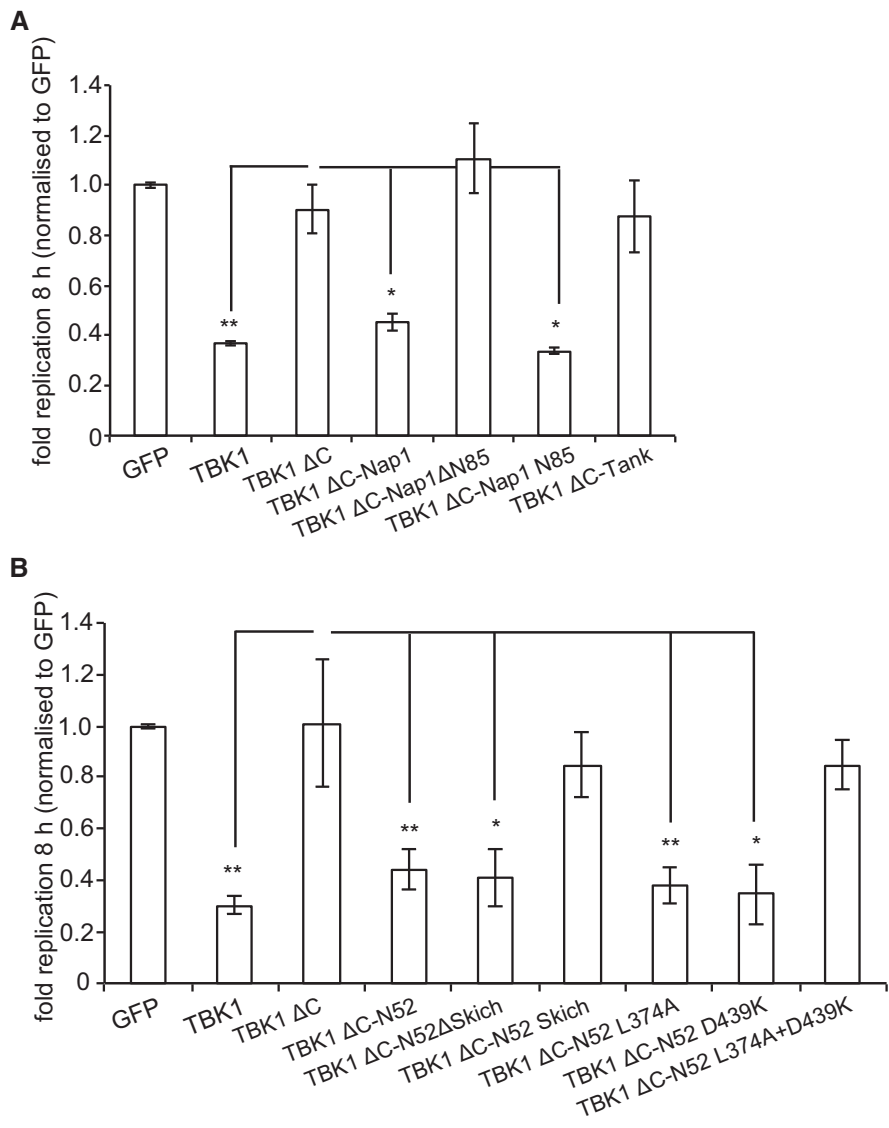


Figure EV3. Recruitment of TBK1 to *Salmonella enterica* serovar Typhimurium via NAP1 or NDP52, but not TANK, restricts bacterial proliferation.

A, B Replication of *S. Typhimurium* in *Tbk1*^{-/-} MEFs complemented with the indicated Flag-tagged TBK1_{ΔC} alleles. Replication normalized to cells expressing GFP. Mean and SEM. N = 3, *P < 0.05, **P < 0.01, one-way ANOVA with Dunnett's multiple comparisons test.

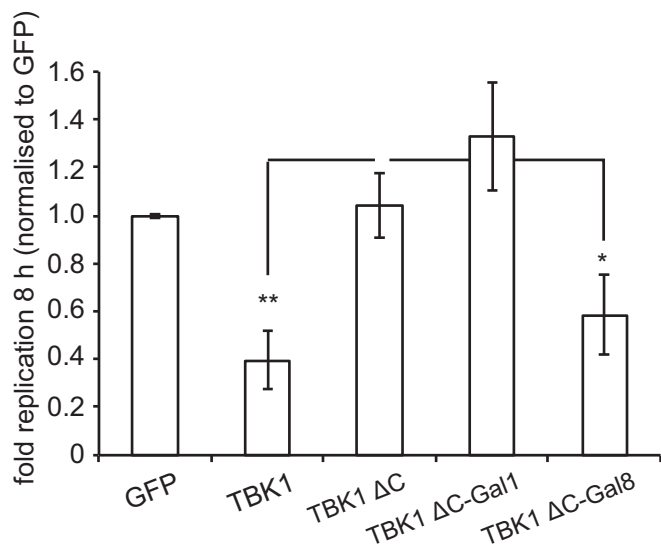


Figure EV4. Recruitment of TBK1 to *Salmonella enterica* serovar Typhimurium via galectin restricts bacterial proliferation.

Replication of *S. Typhimurium* in *Tbk1*^{-/-} MEFs complemented with the indicated Flag-tagged TBK1_{ΔC} fusion proteins. Replication normalized to cells expressing GFP. Mean and SEM. *N* = 4, **P* < 0.05, ***P* < 0.01, one-way ANOVA with Dunnett's multiple comparisons test.

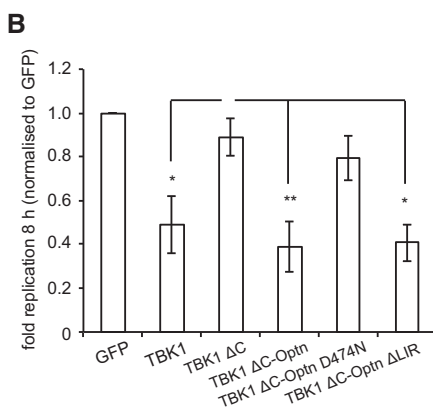
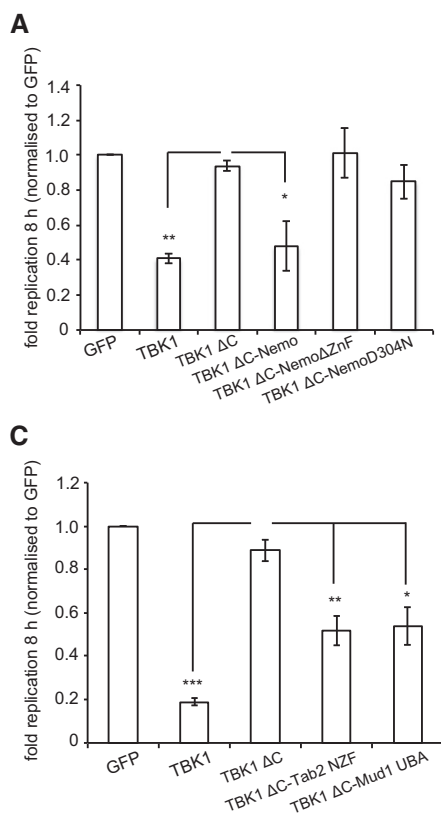


Figure EV5. Recruitment of TBK1 to *Salmonella enterica* serovar Typhimurium via ubiquitin restricts bacterial proliferation.

A–C Replication of *S. Typhimurium* in *Tbk1*^{-/-} MEFs complemented with the indicated Flag-tagged TBK1_{ΔC} fusion proteins. Replication normalized to cells expressing GFP. Mean and SEM. *N* = 4, **P* < 0.05, ***P* < 0.01, ****P* < 0.001, one-way ANOVA with Dunnett's multiple comparisons test.