

ELECTRONIC SUPPLEMENTARY MATERIAL

Article title:

Transient monocular blindness and the risk of vascular complications according to subtype: a prospective cohort study

Journal name:

Journal of Neurology

Authors:

Eline J. Volkers MD, Richard C.J.M. Donders MD, Peter J. Koudstaal MD, Jan van Gijn MD, Ale Algra MD, L. Jaap Kappelle MD

Address for correspondence:

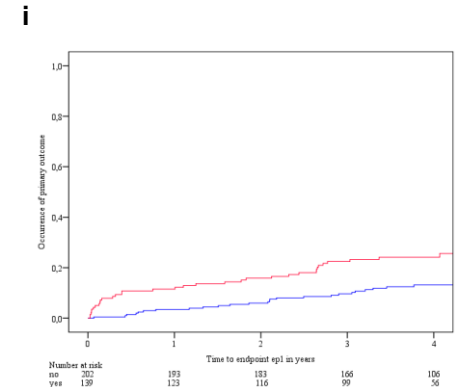
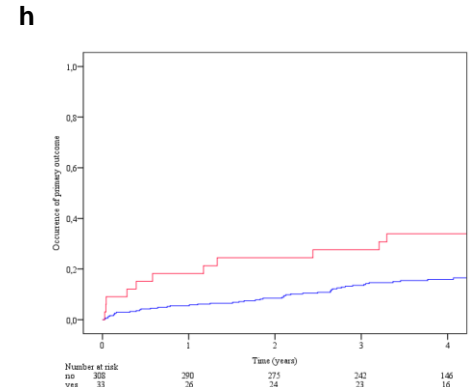
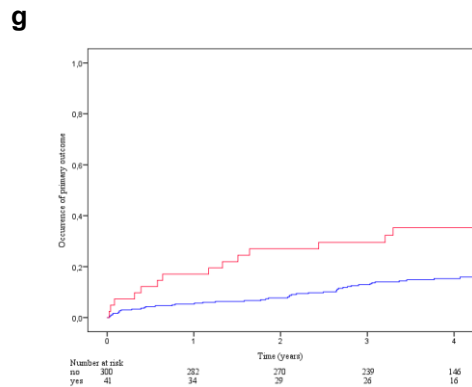
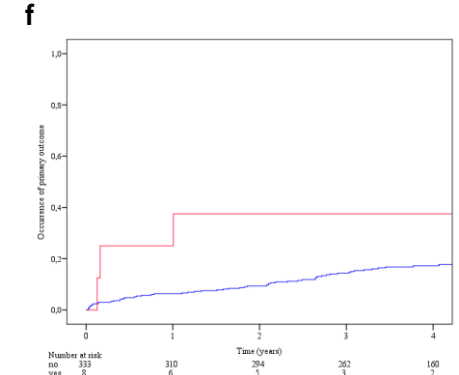
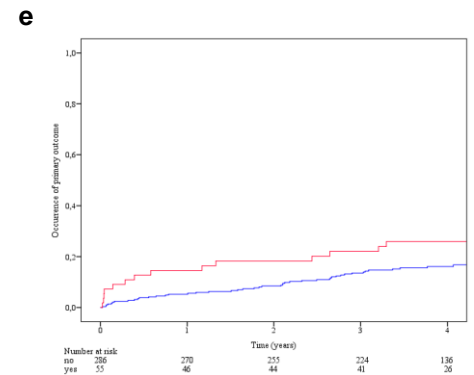
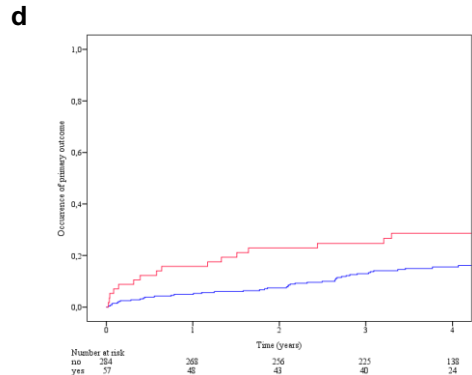
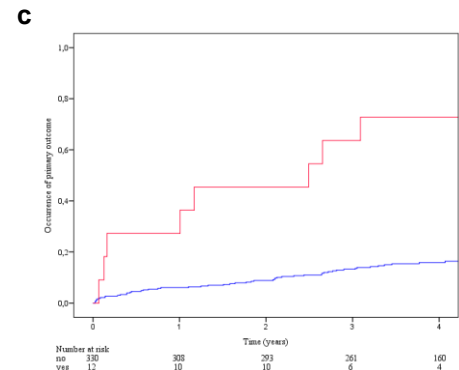
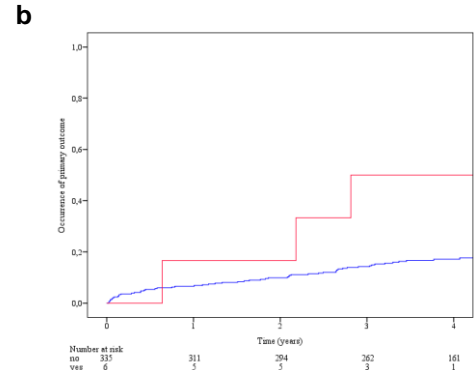
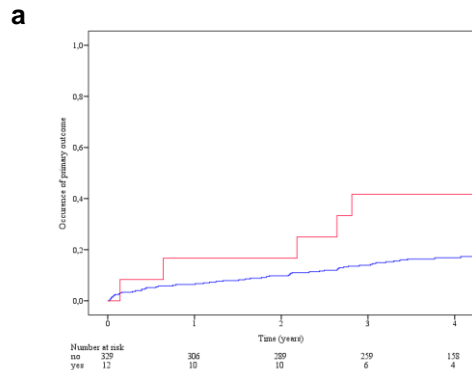
E.J. Volkers, Julius Center for Health Sciences and Primary Care, University Medical Center Utrecht

Internal mail no. Str. 6.131, P.O. Box 85500, 3508 GA Utrecht, The Netherlands

Phone: +31.88.7569626

Fax: +31.88.7568099

Email: E.J.Volkers@umcutrecht.nl



SUPPLEMENTARY FIG. 1 Kaplan-Meier cumulative probability of incidence of primary outcome (composite of vascular death, stroke, myocardial infarction, or retinal infarction) during follow-up

(a) Completely colored visual field, (b) completely black visual field with color, (c) involvement of peripheral visual field only, (d) onset of curtain to above or below, (e) resolution of curtain to above or below, (f) constricting onset of visual field loss, (g) downward onset of loss of vision, (h) upward resolution of loss of vision, (i) occurrence of more than three attacks.

Blue line: history characteristic absent. Red line: history characteristic present.