

A multimodal imaging workflow to visualize metal mixtures in the human placenta and explore colocalization with biological response markers

Megan M. Niedzwiecki^{1*a}, Christine Austin^{1,2}, Romain Remark³, Miriam Merad³, Sacha Gnjatich³, Guadalupe Estrada-Gutierrez⁴, Aurora Espejel-Nuñez⁵, Hector Borboa-Olivares⁶, Mario Guzman-Huerta⁶, Rosalind J. Wright⁷, Robert O. Wright¹ and Manish Arora^{1*}

¹Exposure Biology, Senator Frank R. Lautenberg Environmental Health Sciences Laboratory, Department of Preventive Medicine, Icahn School of Medicine at Mount Sinai, New York City, New York, USA

²Faculty of Dentistry, The University of Sydney, Sydney, New South Wales 2006, Australia

³Division of Hematology/Oncology and Immunology, The Tisch Cancer Institute, Icahn School of Medicine at Mount Sinai, New York City, New York, USA

⁴Biomedical Research Branch, Instituto Nacional de Perinatología, Mexico City, Mexico

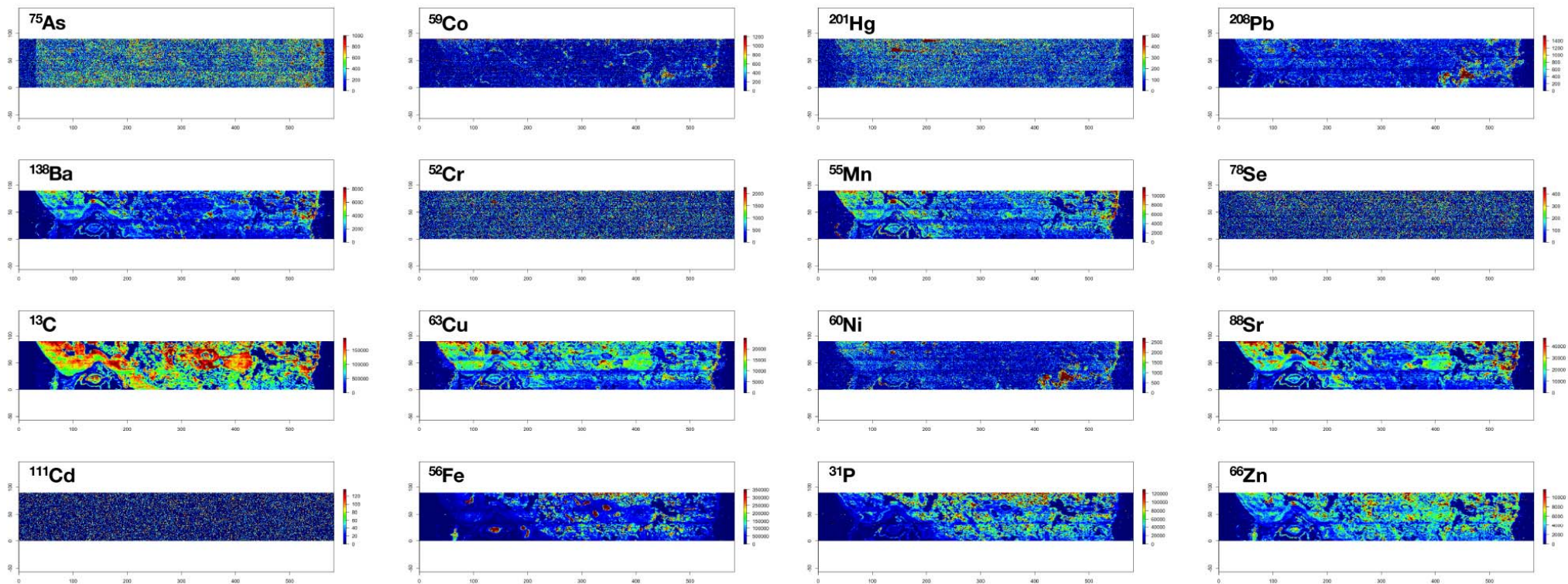
⁵Department of Immunobiochemistry, Instituto Nacional de Perinatología, Mexico City, Mexico

⁶Maternal Fetal Research Unit, Instituto Nacional de Perinatología, Mexico City, Mexico

⁷Mindich Child Health & Development Institute, Icahn School of Medicine at Mount Sinai, New York, New York, USA

a. Present address: Rollins School of Public Health, Emory University, 1518 Clifton Road NE, Claudia Nance Rollins Building, 5th Floor, Atlanta, GA 30322.

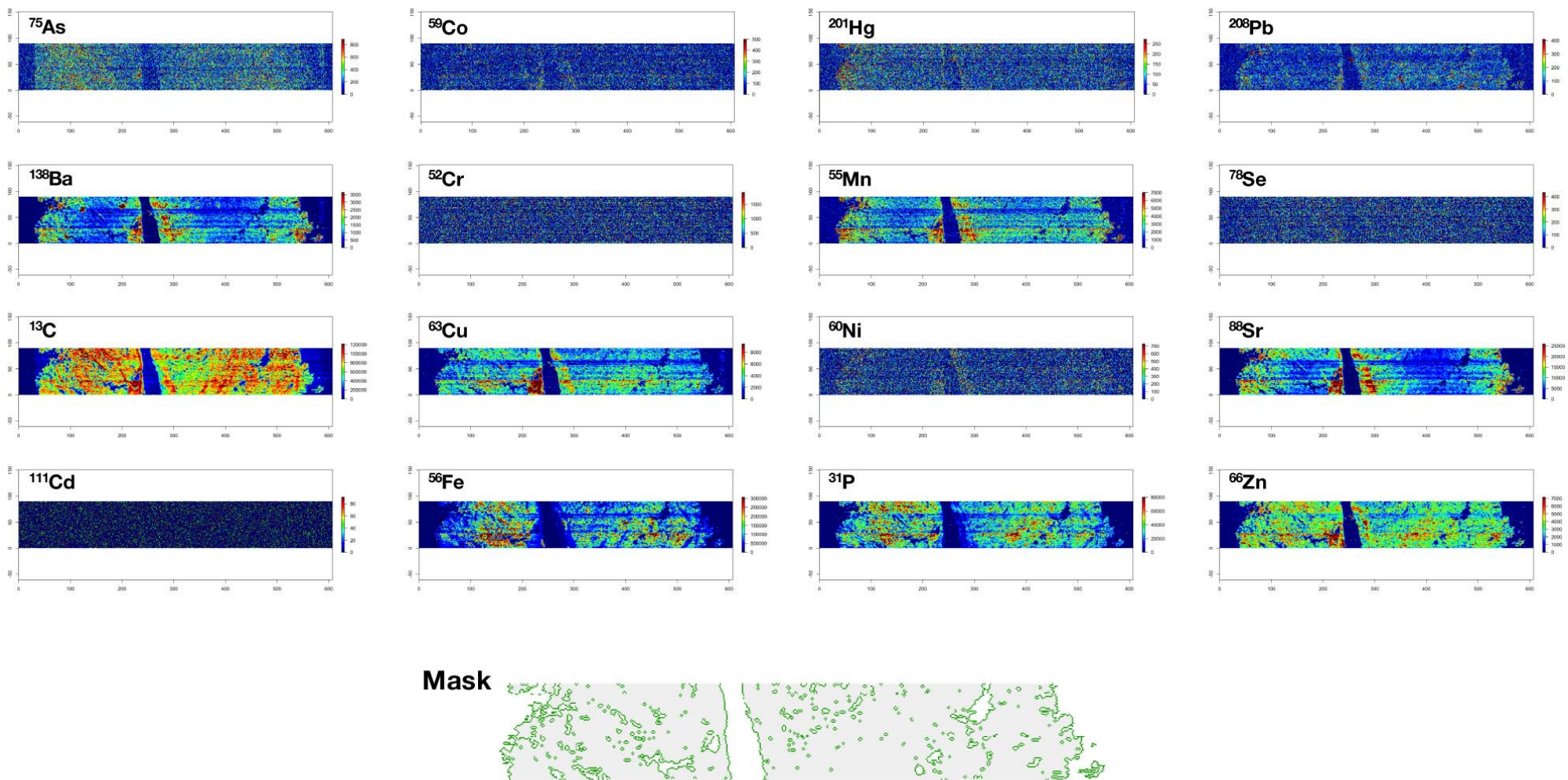
Supplementary Figure 1. Placenta sample 1, fetal side



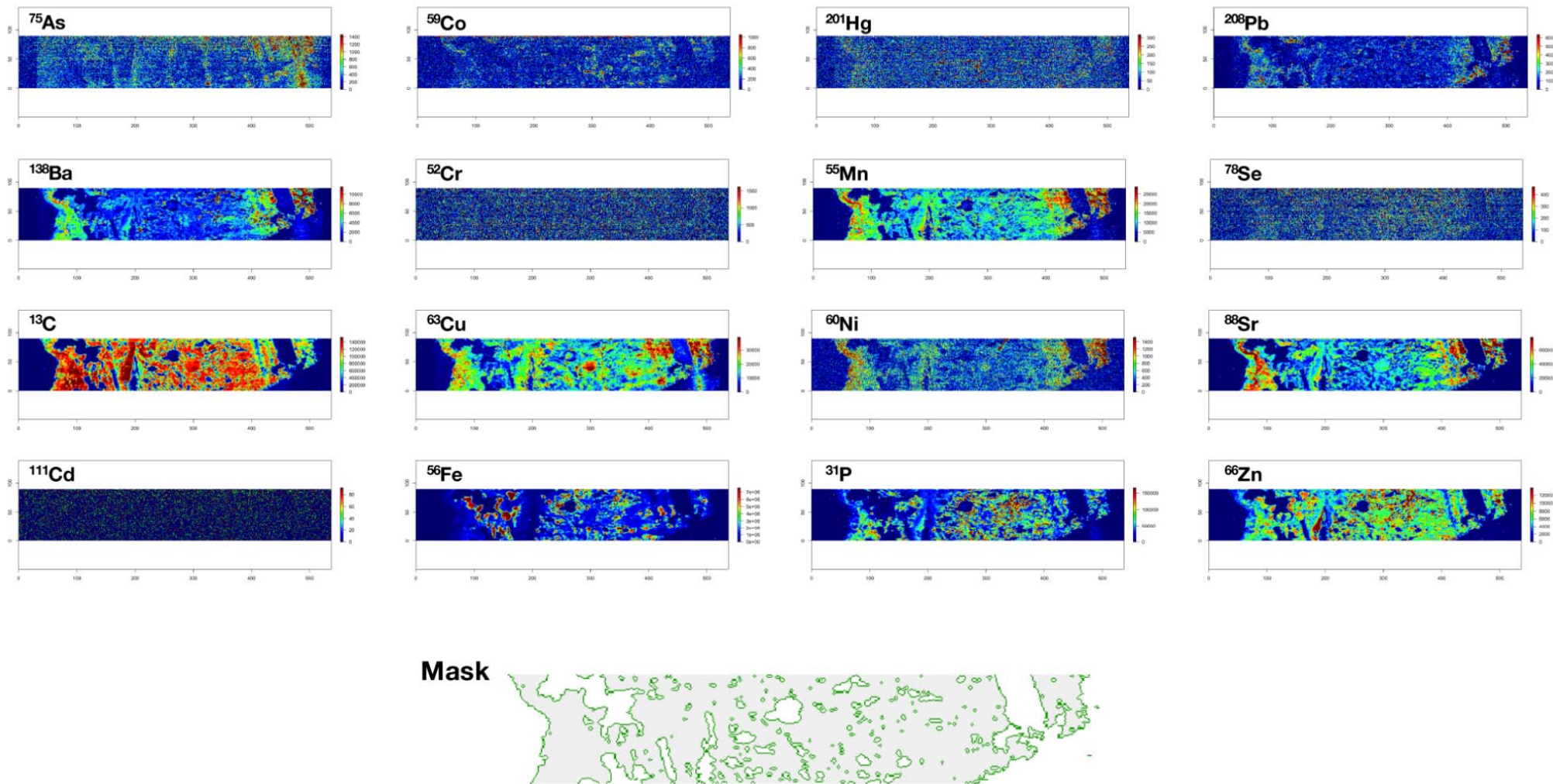
Mask



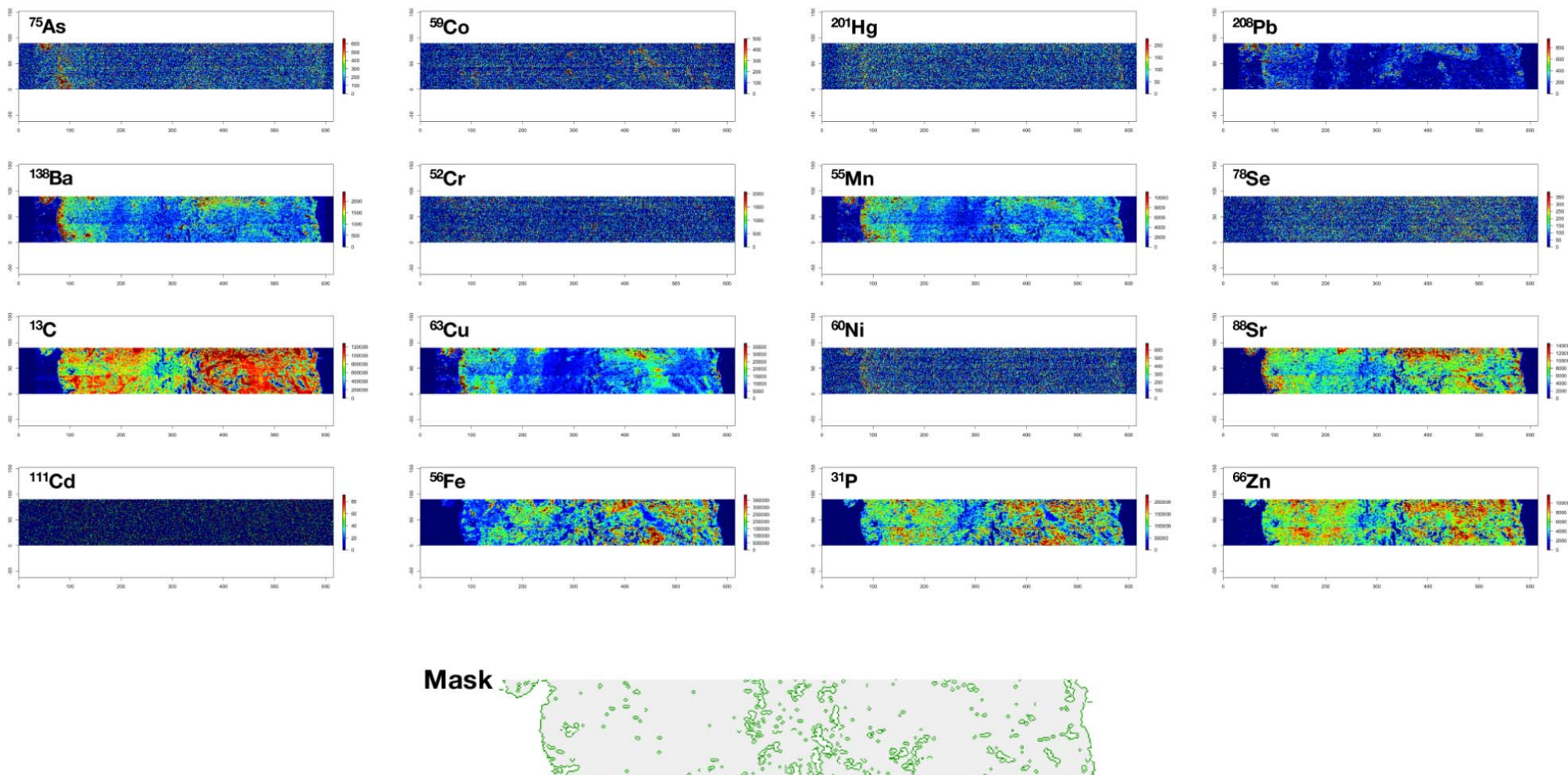
Supplementary Figure 2. Placenta sample 1, maternal side



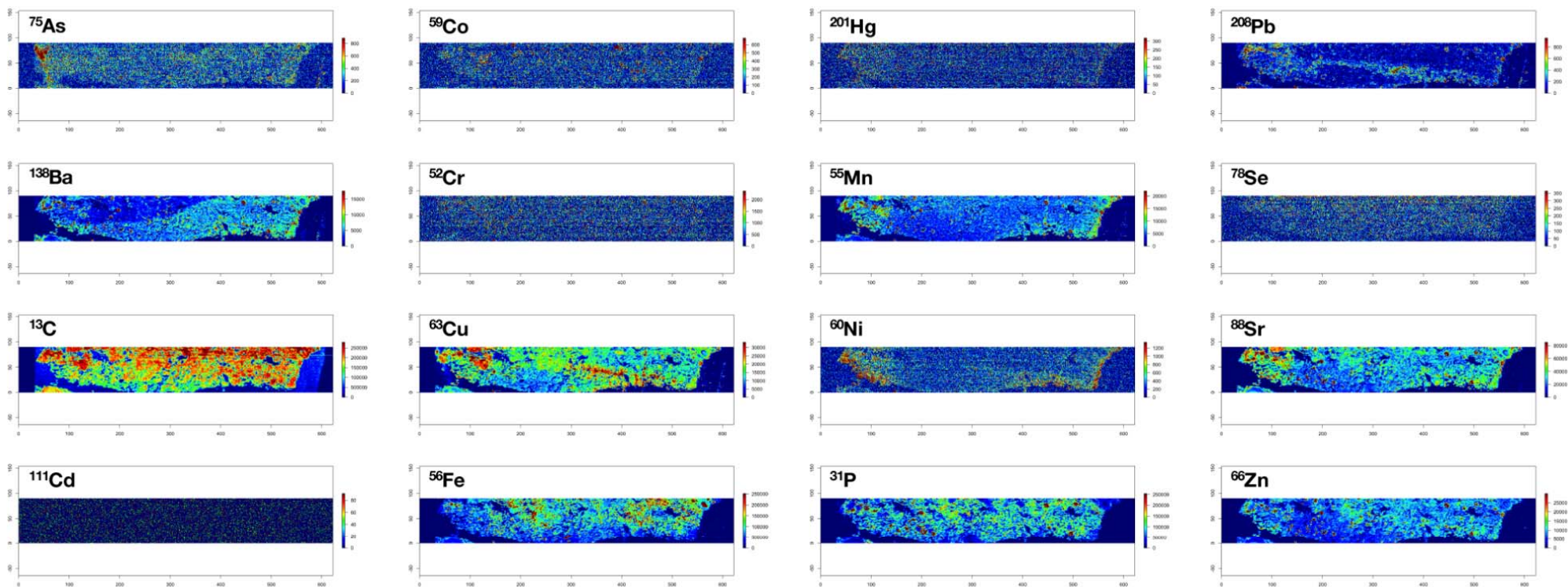
Supplementary Figure 3. Placenta sample 2, fetal side



Supplementary Figure 4. Placenta sample 2, maternal side



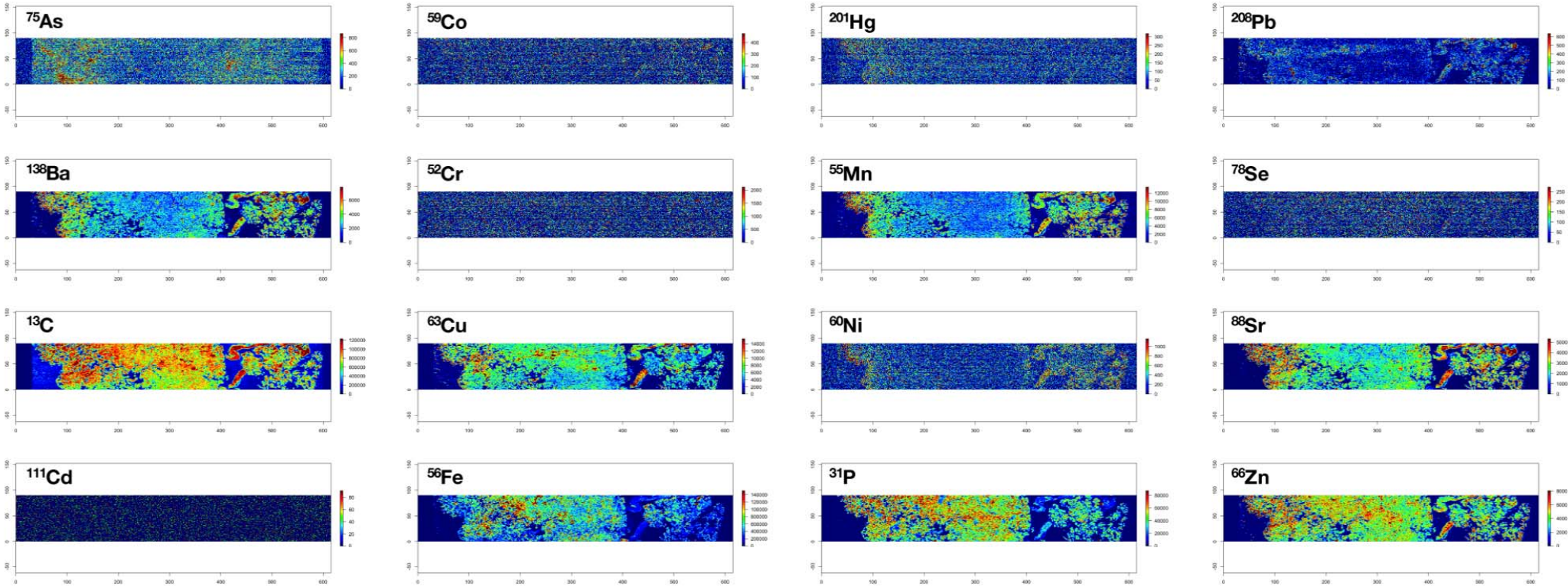
Supplementary Figure 5. Placenta sample 3, fetal side



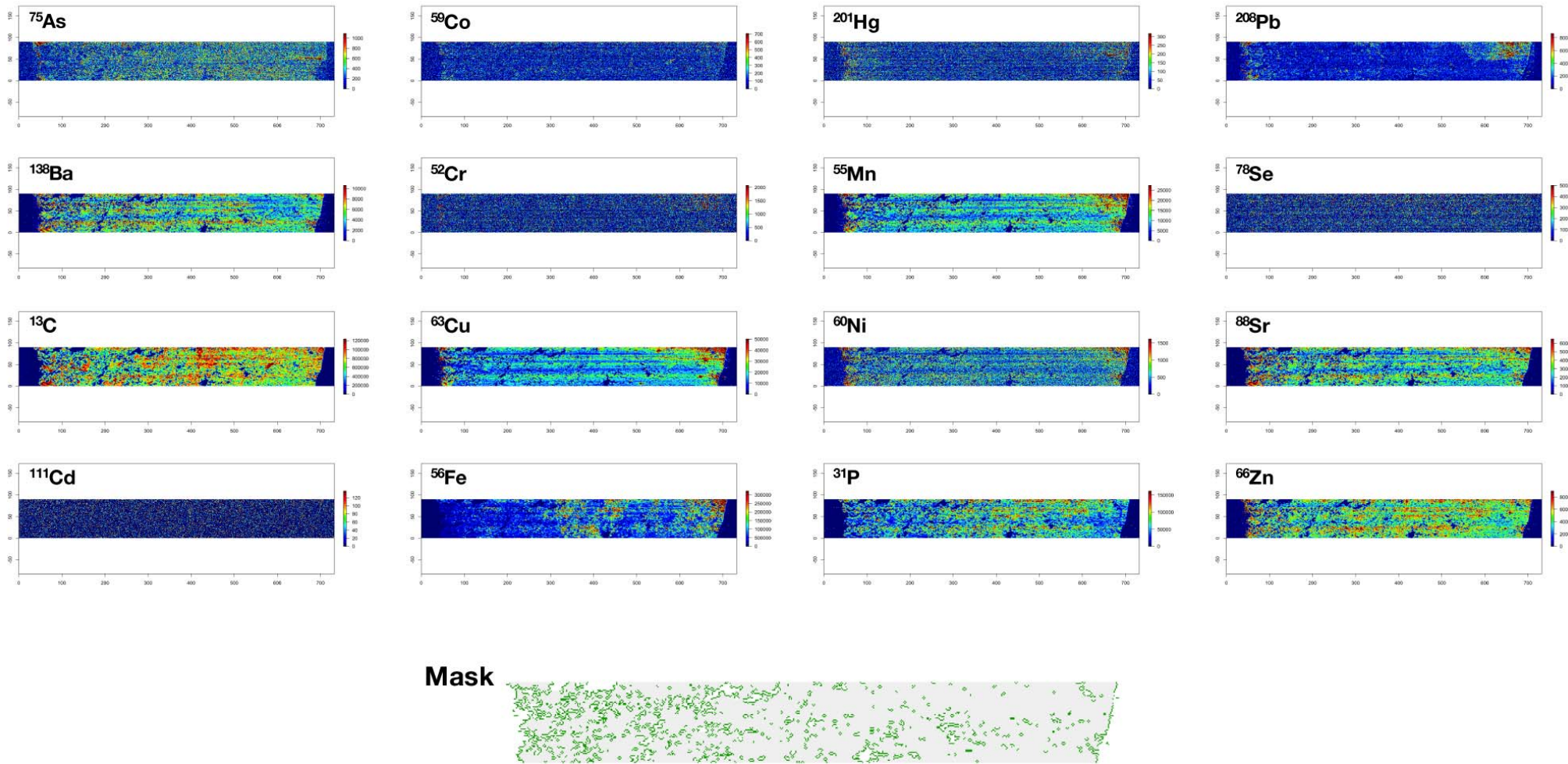
Mask



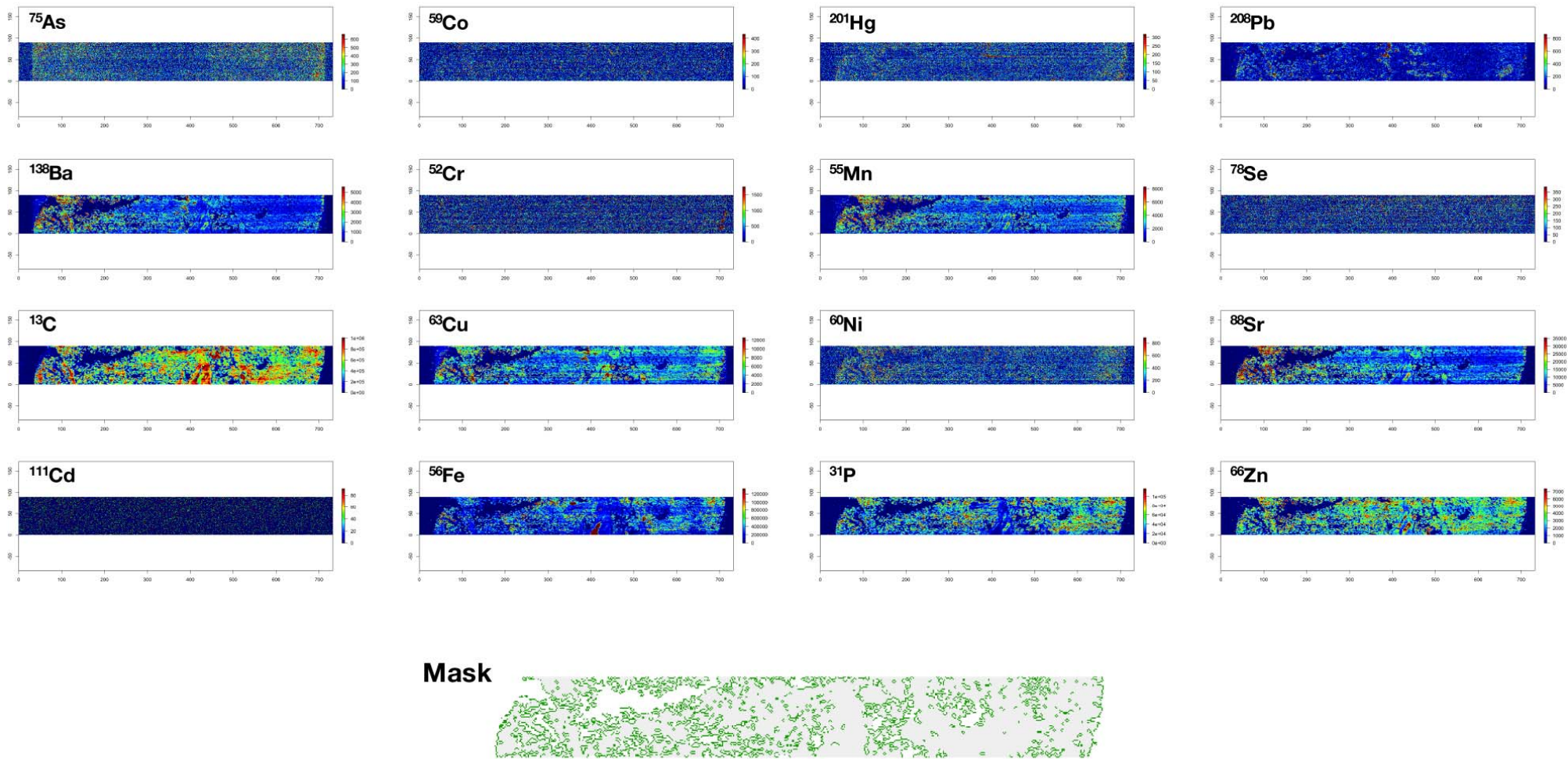
Supplementary Figure 6. Placenta sample 3, maternal side



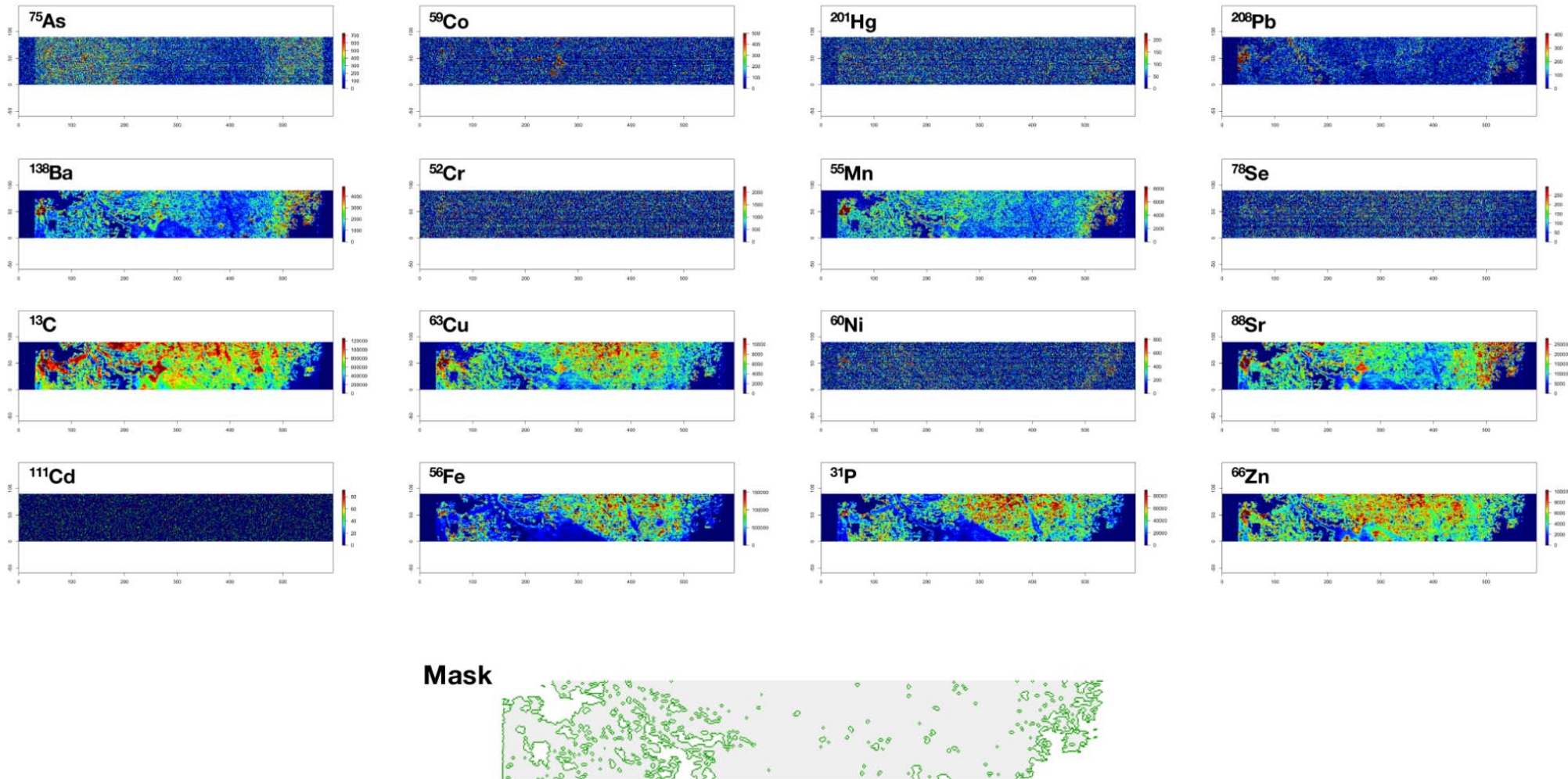
Supplementary Figure 7. Placenta sample 4, fetal side



Supplementary Figure 8. Placenta sample 4, maternal side



Supplementary Figure 9. Placenta sample 5, fetal side



Supplementary Figure 10. Placenta sample 5, maternal side

