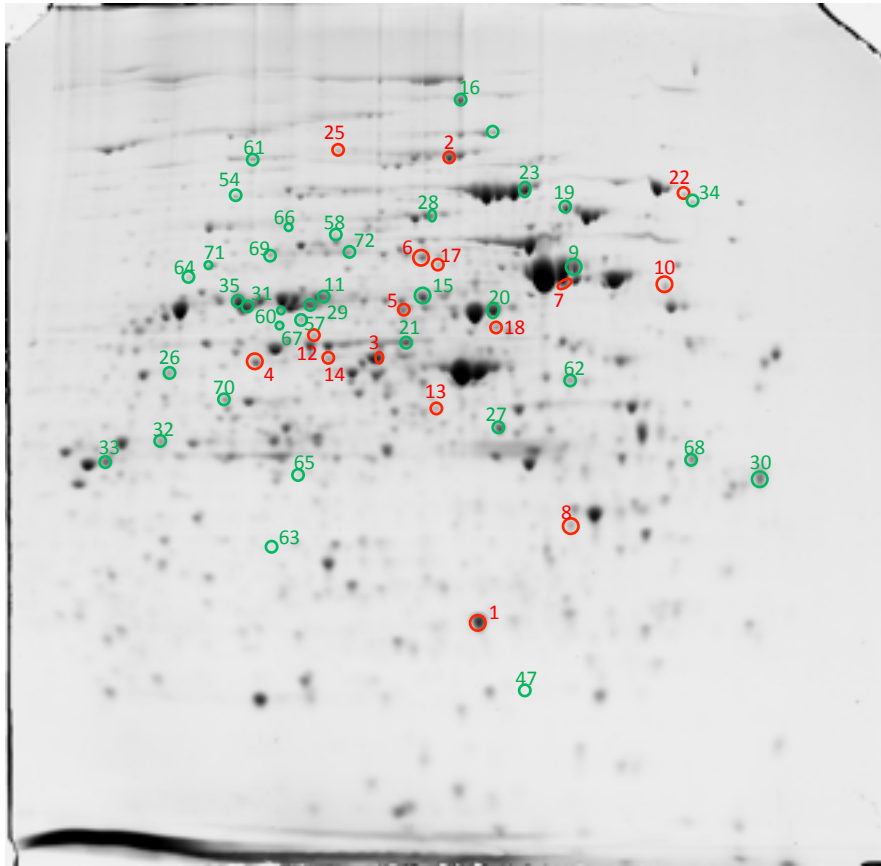
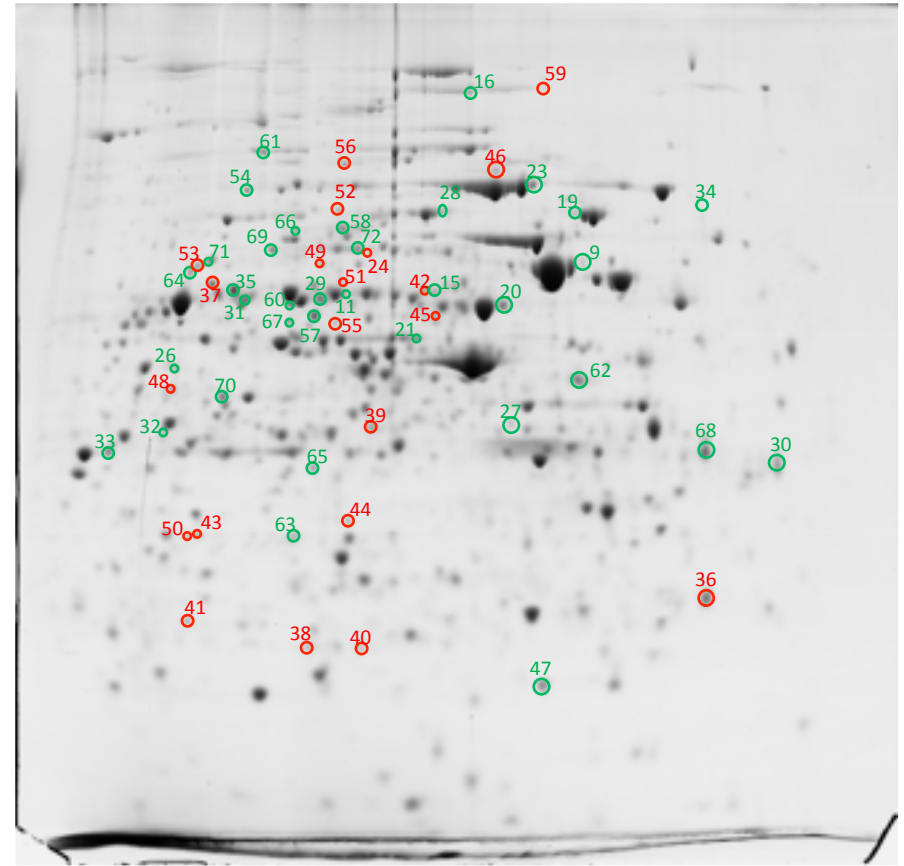


**Supplementary Fig. 2.** Proteomes of *R. phaseoli* strains. A, CCGM1. B, CIAT652. Spots taken for analysis are encircled, in red, abundant proteins in the strain which were not visible in the other; in green, abundant proteins in the strain with counterpart in the other. Lines with arrows denote the direction of the 2D runs.

C



D



**Supplementary Fig. 2.** Proteomes of *S. americanum* strains. C, CCGM7. D, CFNEI73. Spots taken for analysis are encircled, in red, abundant proteins in the strain which were not visible in the other; in green, abundant proteins in the strain with counterpart in the other.