

Supplementary Information

Supplementary Table 1. Primer sequences used in this study

Target gene	Target Sequence
CCR2	5'-ATCCACGGCATACTATCAACATC-3' (<i>forward</i>)
	5'- CAAGGCTCACCATCATCGTAG – 3' (<i>reverse</i>)
F4/80	5'- TGACTCACCTTGTGGTCCTAA -3' (<i>forward</i>)
	5'- CTTCCCAGAATCCAGTCTTTCC -3' (<i>reverse</i>)
CD68	5'- CTTCCCACAGGCAGCACAG -3' (<i>forward</i>)
	5'- AATGATGAGAGGCAGCAAGAGG -3' (<i>reverse</i>)
CD11c	5'- AAAATCTCCAACCCATGCTG -3' (<i>forward</i>)
	5'- CACCACCAGGGTCTTCAAGT -3' (<i>reverse</i>)
CD206	5'- CAGGTGTGGGCTCAGGTAGT -3' (<i>forward</i>)
	5'- TGT GGT GAG CTG AAA GGT GA -3
TNF- α	5'- AAGCCTGTAGCCCACGTCGTA -3' (<i>forward</i>)
	5'- GGCACCACTAGTTGGTTGTCTTTG -3' (<i>reverse</i>)
iNOS	5'- CAGAGGACCCAGAGACAAGC -3' (<i>forward</i>)
	5'- TGCTGAAACATTTCTGTGC -3' (<i>reverse</i>)
SCD-1	5'- GCTGGAGTACGTCTGGAGGAA -3' (<i>forward</i>)
	5'- TCCCGAAGAGGCAGGTGTAG -3' (<i>reverse</i>)
36B4	5'- C TTCATTGTGGGAGCAGACA -3' (<i>forward</i>)
	5'- TCTCCAGAGCTGGGTTGTTC -3' (<i>reverse</i>)
GAPDH	5'- AGGTCGGTGTGAACGGATTTG -3' (<i>forward</i>)
	5'- TGTAGACCATGTAGTTGAGGTCA -3' (<i>reverse</i>)

Supplementary Figure Legends.

Fig S1. Evaluation of toxicity. Cytotoxicity was measured by the CCK-8 viability assay 24h post transfection of Raw 264.7 cells with indicated reagents. LMN represents Lipofectamine 2000.

Fig S2. Daily food intake in the mouse cohorts. Error bars indicate the SEM.

Figure S1

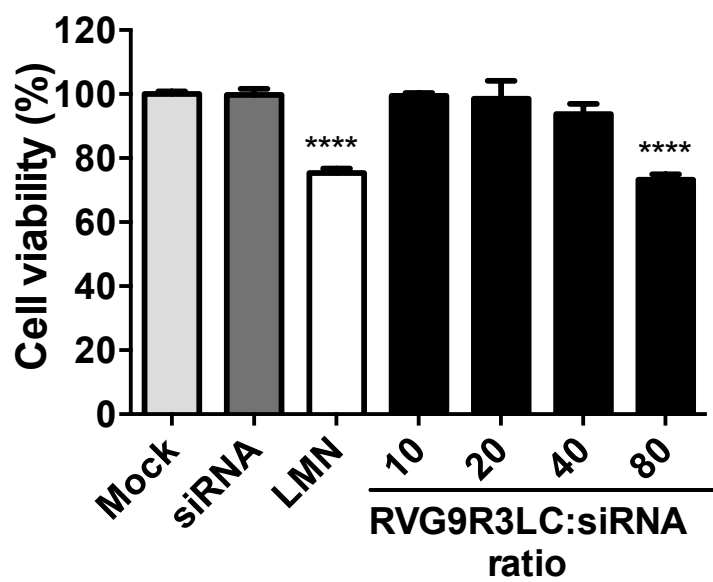


Figure S2

