

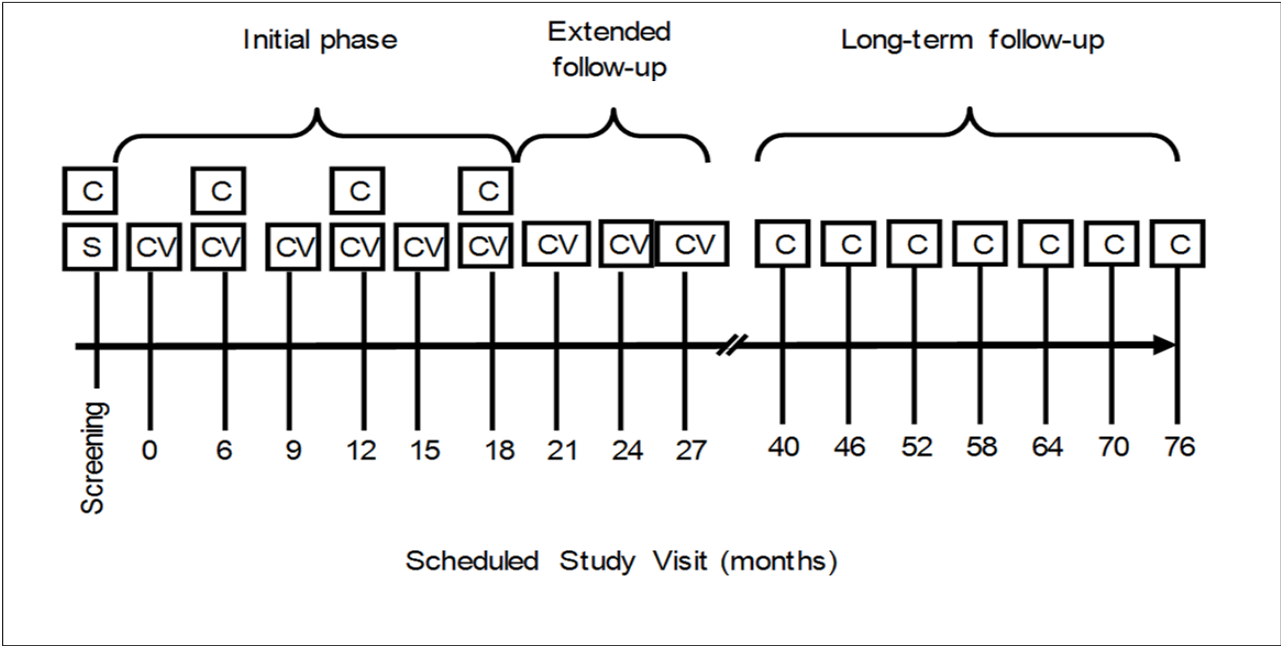
Supplementary Table 1: List of Independent Ethics Committees/Institutional Review Boards

Centre number(s)*	Ethics Review Board (Institution and address)	Country
19	Comitê de Ética em Pesquisa do Hospital Universitário Walter Cantídio da Universidade Federal do Ceará – COMEPE; Rua Capitão Francisco Pedro, 1290; Rodolfo Teófilo 60430-370- Fortaleza – Ceará	Brazil
21	Comitê de Ética em Pesquisa da Faculdade de Ciências Médicas – UNICAMP; Caixa Postal 6111; 13083-970 – Campinas – São Paulo	Brazil
22	Comitê de Ética em Pesquisa em Seres Humanos do Hospital de Clínicas – HCPR; Rua General Carneiro, 181; 80060-150 – Curitiba – Paraná	Brazil
23	Comitê de Ética em Pesquisa da Secretaria Municipal de Saúde de São Paulo, Rua General Jardim, 36 – 2º. Andar, Vila Albuquerque – 01223-010, São Paulo – São Paulo	Brazil
24	Grupo de Pesquisa e Pós – Graduação - Comissão Científica e Comissão de Pesquisa e Ética em Saúde – Hospital de Clínicas de Porto Alegre, Rua Ramiro Barcelos, 2350 2º andar, 90035-003 – Porto Alegre – Rio Grande do Sul	Brazil
17	Health Research Ethics Board Dr. D. Morrish; Health Research Ethics Board; 2J2.27 Walter Mackenzie Center, University of Alberta Edmonton, AB T6G 2R7	Canada
18	Research Ethics Board, Sunnybrook Campus, Phillip Herbert, MD, The Research Building, 2075 Bayview Ave, Room S1-33, Toronto, ON, M4N 3M5	Canada
25	University of Manitoba Biomedical Research Ethics Board; Dr. Nick Anthonisen, University of Manitoba, P126 – 770, Bannatyne Avenue Winnipeg, MB R3E 0W3	Canada
27, 28	Optimum Clinical Research Inc., Bill Wilson, 231 King Street East Oshawa, ON L1H 1C5	Canada
10, 70, 100, 110, 130, 320, 340	Quorum Review IRB, 1601 Fifth Avenue, Suite 1000, Seattle, WA 98101	US
20	Thomas Jefferson University, 1015 Walnut St, Suite 410, Philadelphia, PA 19107	US
40	University of Georgia, 1423 Harper Street, Bldg. #HH100, Augusta, GA 30912	US
50	University of Louisville, 550 S. Jackson Street, Louisville, KY 40202	US
60	Atlantic Health System/Morristown Memorial Hospital, 100 Madison Avenue Morristown, NJ 07960	US
80	Dartmouth Medical Center, One Medical Center Drive, Lebanon, NH 03756	US
90	San Francisco General Hospital, 1001 Potrero Avenue, San Francisco, CA 94110	US
242	University of California, San Francisco, 3333 California Street, San Francisco, CA 94118	US
120	Marshfield Clinic, 1000 North Oak Avenue, Marshfield, WI 54449	US
150	University of Texas, 2060 Space Park Drive, Houston, TX 77058	US
160	University of New Mexico, 1816 Sigma Chi Rd. NE, Albuquerque, NM 87131	US

* GSK Biologicals assigned centre number

Supplementary Table 2: Characteristics of the cohort of 553 women randomized to the control arm of a Phase II HPV-16/18 vaccine trial.

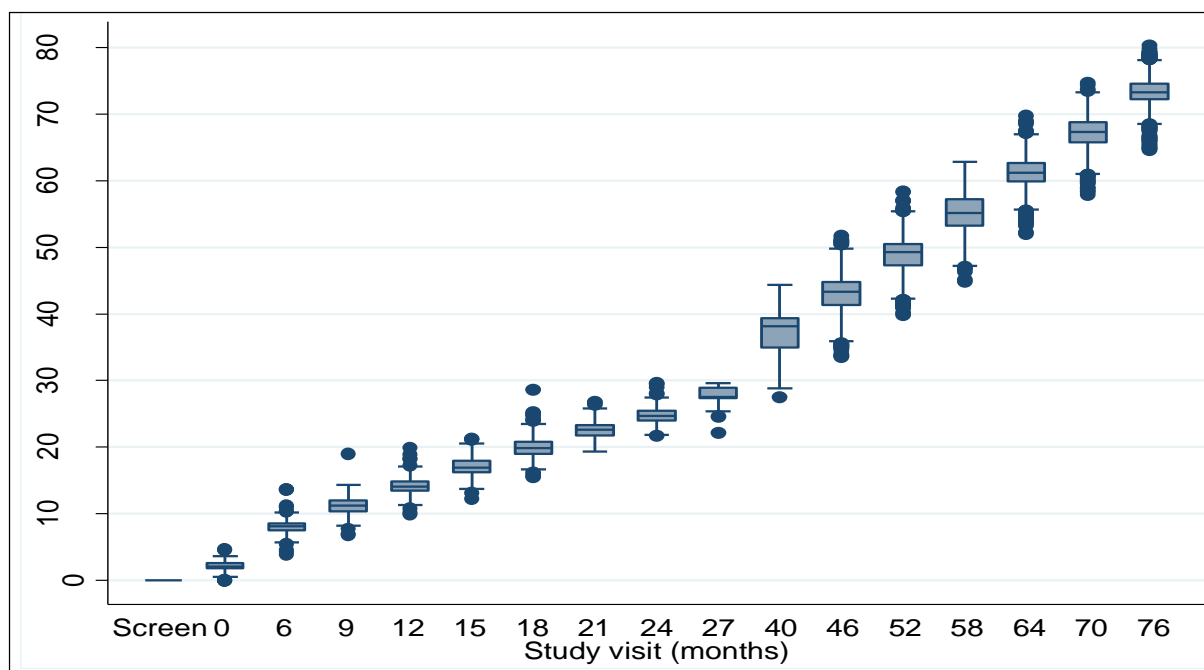
Variable	Categories	n (%)
Age	< 20 years	215 (38.9)
	≥ 20 years	338 (61.1)
Marital Status	Married/partner	123 (22.2)
	Single/divorced	427 (77.2)
	<i>Missing</i>	3 (0.5)
Country of recruitment	Brazil	248 (44.9)
	U.S. or Canada	305 (55.1)
Ethnicity	Caucasian	384 (69.4)
	Black	41 (7.4)
	Other	128 (23.2)
Education	Less than primary	45 (8.1)
	Primary-high school	197 (35.6)
	College or higher	305 (55.2)
	<i>Missing</i>	6 (1.1)
Smoking History	Never	413 (74.7)
	Former	46 (8.3)
	Current	90 (16.3)
	<i>Missing</i>	4 (0.7)
Lifetime number of sex partners	0-1	404 (73.1)
	≥ 2	63 (11.4)
	<i>Missing</i>	86 (15.6)
Age at first sexual intercourse	< 15 years	115 (20.8)
	≥ 15 years	338 (61.1)
	<i>Missing</i>	100 (18.1)
History of any sexually transmitted diseases (STD)	No	523 (94.6)
	Yes	30 (5.4)
History of non-STDs	No	414 (74.9)
	Yes	139 (25.1)
Condom Use	Never	165 (29.8)
	Regularly	152 (27.5)
	Sometimes	146 (26.4)
	<i>Missing</i>	90 (16.3)
Oral contraceptive use	Never	142 (25.7)
	Regularly	295 (53.3)
	Sometimes	36 (6.5)
	<i>Missing</i>	80 (14.5)



Supplementary Figure 1: Timeline for specimen and data collection in the cohort.

Initial and extended follow-up phases – NCT00689741 (HPV-001); long-term follow-up phase – NCT00120848 (HPV-007)

C = Cervical samples (clinician-collected); CV = cervico-vaginal samples (self-collected)



Supplementary Figure 2: Distribution of visit times among participants for each scheduled visit. Each box on the above Box-and-whiskers plot extends from the 25th percentile to the 75th percentile (i.e., the interquartile range); horizontal lines inside boxes represent medians. The lower adjacent value provides an estimate of the lower limit of the array and represents the first quartile value less 1.5 times the difference between the first and third quartiles. The upper adjacent value provides an estimate of the upper limit of the array and represents the third quartile value plus 1.5 times the difference between the first and third quartiles. Dots represent outliers. The number of women at each study visit was: screening visit, 553; 0 month (mo), 553; 6 mo, 518; 9 mo, 482; 12 mo, 491; 15 mo, 468; 18 mo, 478; 21 mo, 386; 24 mo, 246; 27 mo, 82; 40 mo, 382; 46 mo, 353; 52 mo, 369; 58 mo, 335; 64 mo, 347; 70 month, 325; 76 mo, 313. Detailed protocol was previously discussed [31, 32].