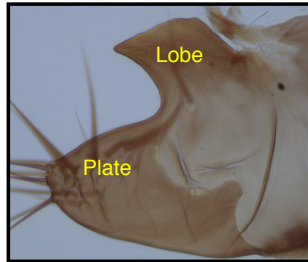
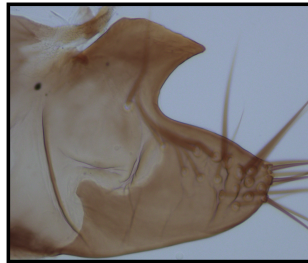


Supplementary Figure S1. Posterior lobe phenotype acquisition workflow.



STEP 1

Take image of posterior lobe & lateral plate



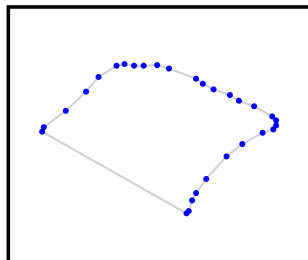
STEP 2

If necessary, flip/rotate image such that “point” of lobe points clockwise



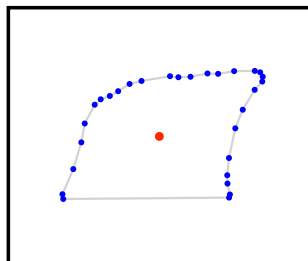
STEP 3

Using *ImageJ* define outline of lobe, closing the outline with an artificial baseline



STEP 4

Save the series of Cartesian coordinates defining lobe shape/size



STEP 5

Rotate the coordinate series so the baseline is horizontal, and translate the coordinates so that the centroid of the outline is at the origin (•)