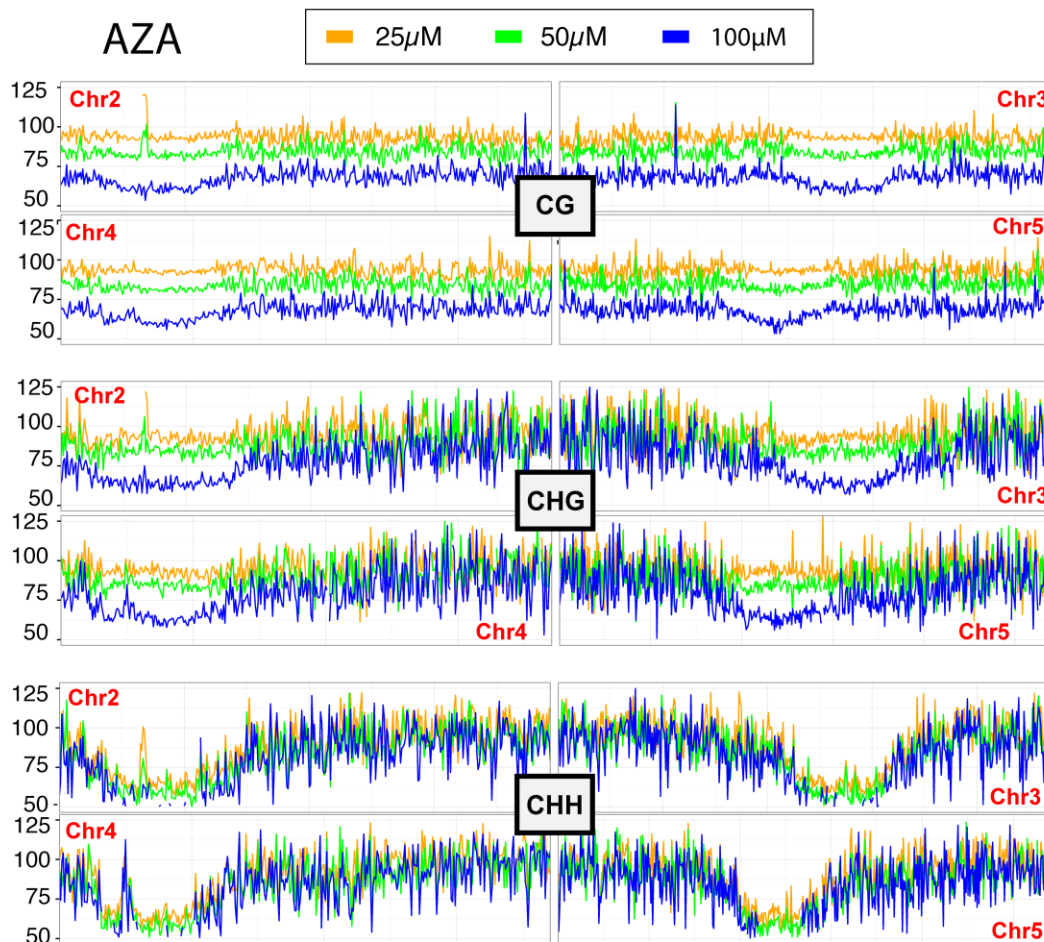
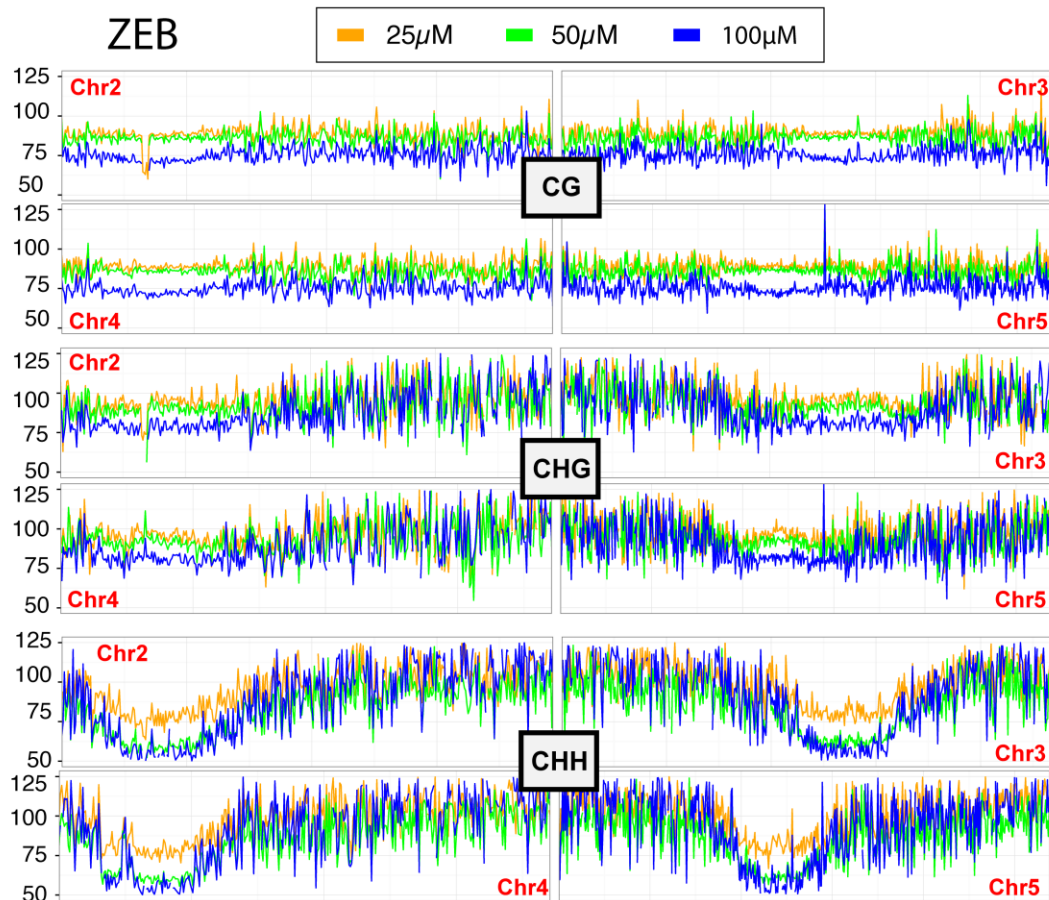


**A****B**

**Figure S1 | DNA methylation across all chromosomes is decreased when treated with AZA and ZEB in a concentration-dependent fashion**

A-B. Relative methylation level shown across chromosomes 2-4 (chromosome 1 shown in Figure 2B) for AZA-treated (S1A) and ZEB-treated (S1B) seedlings.