

FIGURE S3

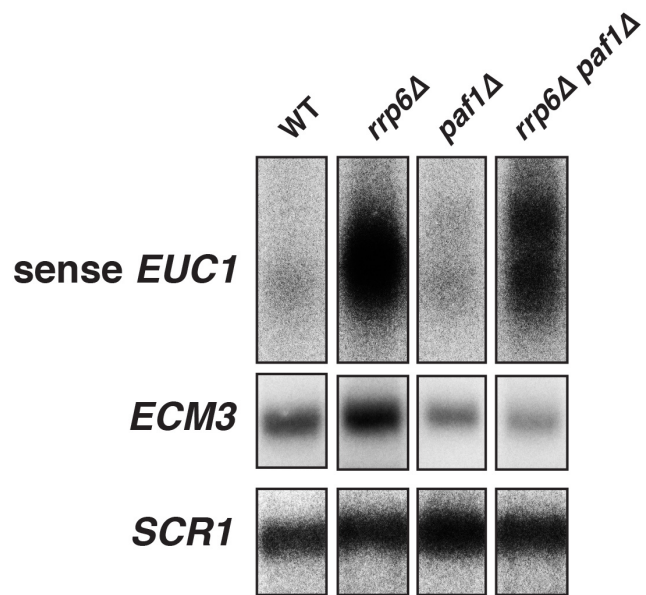


Figure S3. The long *EUC1* isoform is an unstable transcript that is transcribed in the sense direction relative to *ECM3*. Representative northern analysis of *EUC1* and *ECM3* levels in a wild-type strain compared to strains where CUTs are stabilized (*rrp6Δ*) or lacking Paf1 (*paf1Δ* and *paf1Δ rrp6Δ*). *EUC1* was detected using a sense strand-specific probe labeled by asymmetric PCR. *SCR1* serves as a loading control.