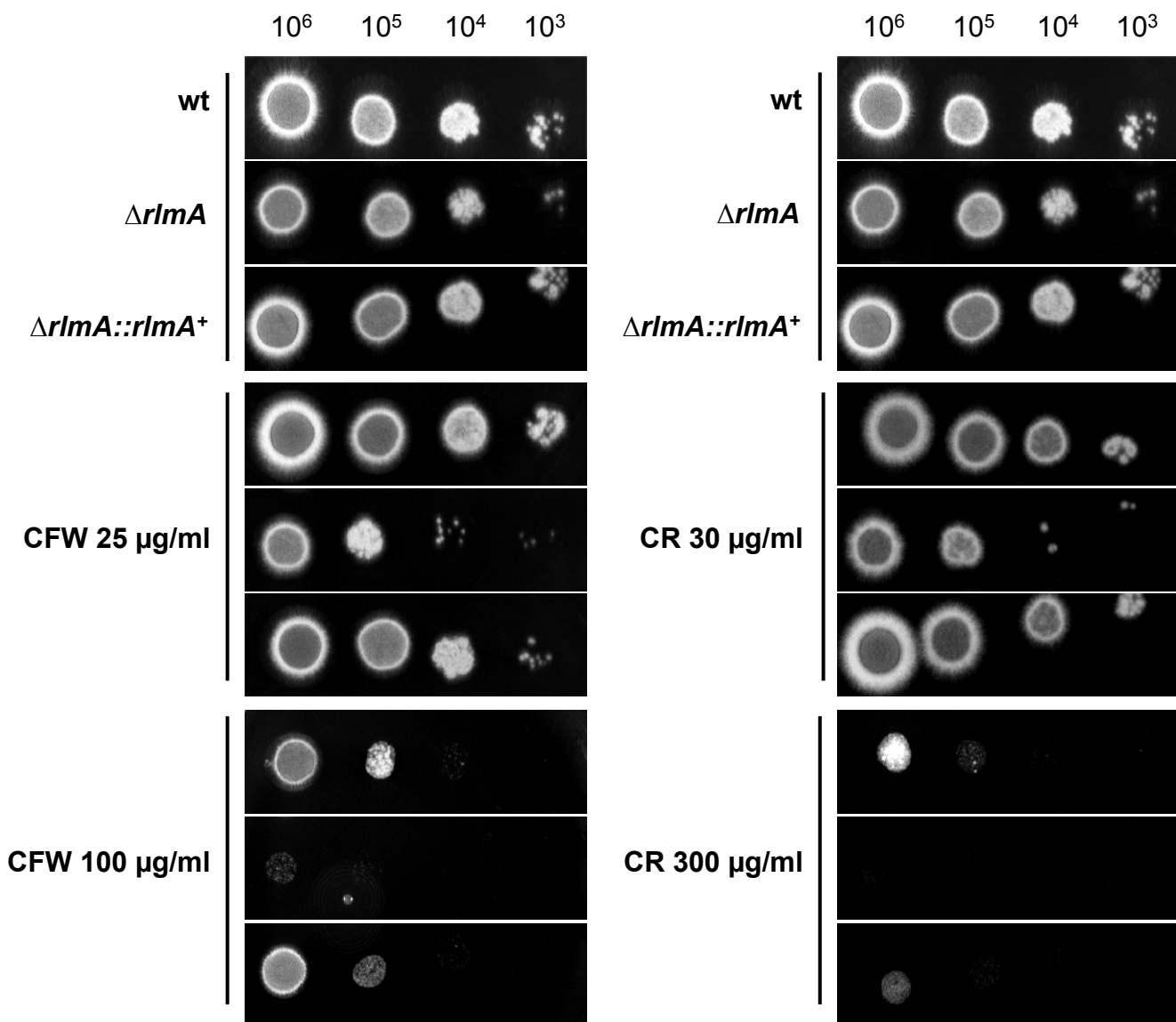
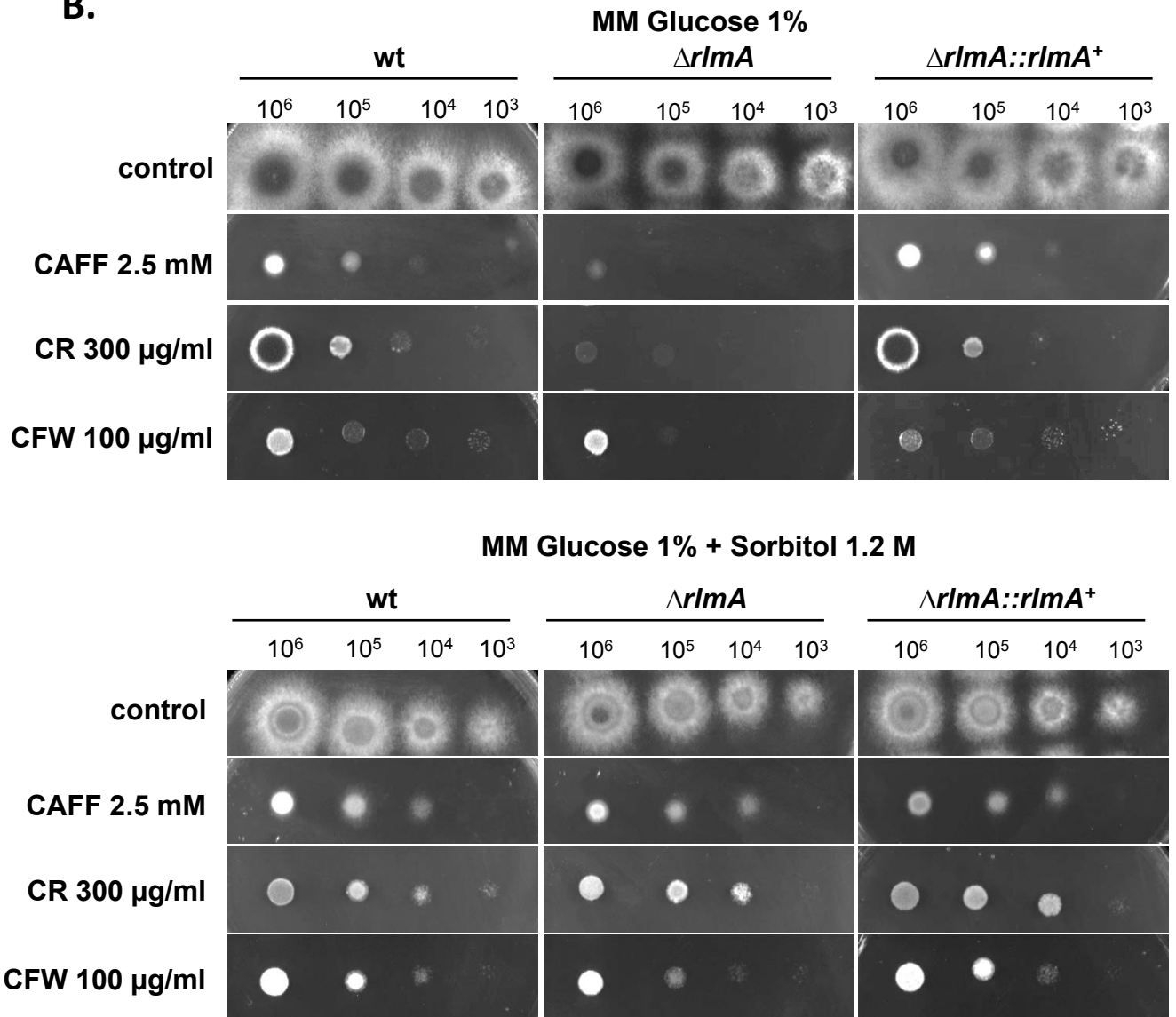


**A.**



**B.**

**Figure S3** Growth phenotypes of the  $\Delta rlmA$  mutant strain in the presence of CR and CFW. (A) The indicated number of conidia was inoculated into solid YG medium that was supplemented with CR and CFW. The plates were incubated at 37°C for 72 hours and photographed (A). Growth phenotypes of the  $\Delta rlmA$  mutant in the presence of the osmotic stabilizer D-sorbitol shows a recovery in the sensitivity to cell wall damaging agents. The indicated number of conidia was spotted onto solid MM at 37°C, with or without 1.2 M of sorbitol supplemented with Caffeine (CAFF), Congo Red (CR) and Calcofluor White (CFW). The plates were incubated for 72 hours and photographed (B).