

Supplementary Data for:

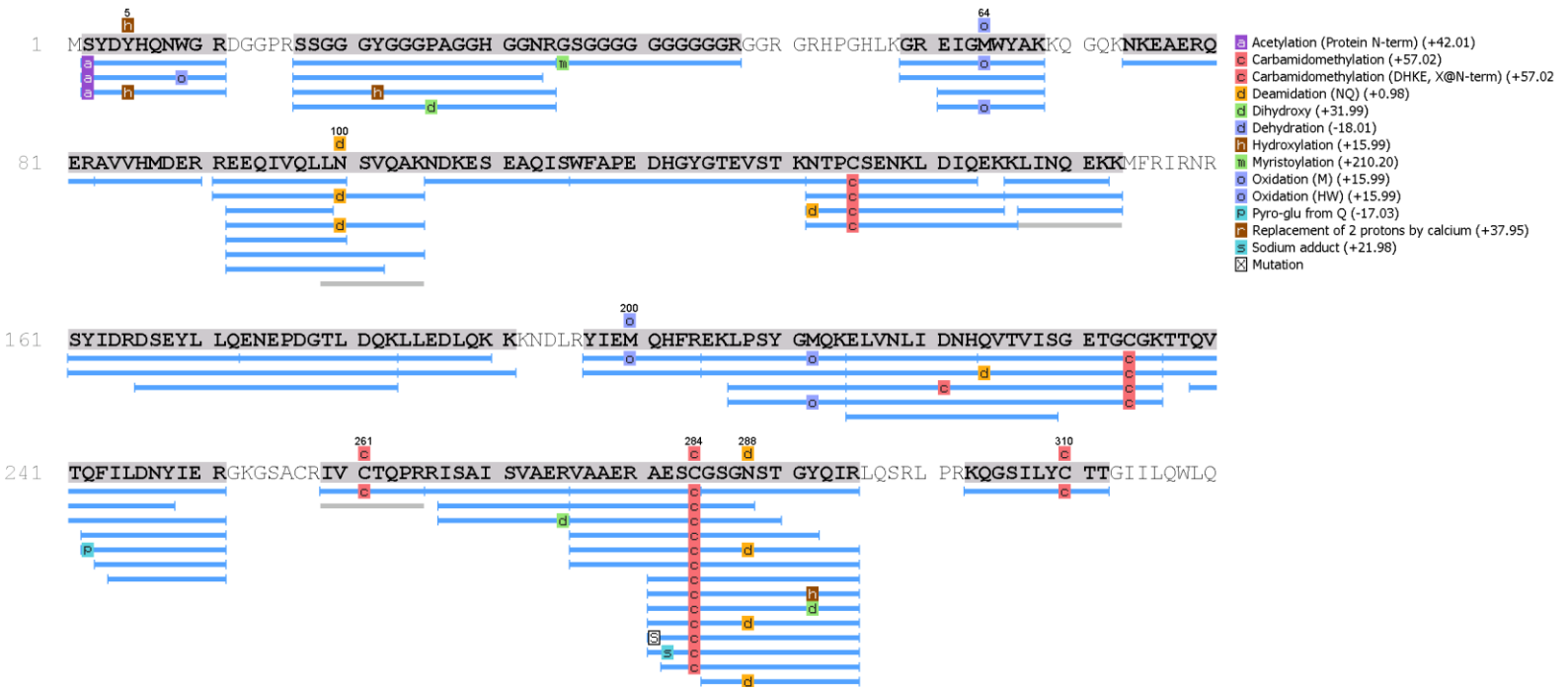
Evidence that G-quadruplex DNA Accumulates in the Cytoplasm and Participates in Stress Granule Assembly in Response to Oxidative Stress

Alicia K. Byrd[‡], Boris L. Zybaylov^{‡§}, Leena Maddukuri[‡], Jun Gao[‡], John C. Marecki[‡], Mihir Jaiswal[§], Matthew R. Bell[‡], Wezley C. Griffin[‡], Megan R. Reed[‡], Shubeena Chib[‡], Samuel G. Mackintosh^{‡¶}, Angus M. MacNicol[¶], Giulia Baldini[‡], Robert L. Eoff^{‡¶}, and Kevin D. Raney^{‡¶}

From the Departments of [‡]Biochemistry and Molecular Biology and [¶]Neurobiology and Developmental Sciences, University of Arkansas for Medical Sciences, [¶]Winthrop P. Rockefeller Cancer Institute, Little Rock, Arkansas 72205, and the [§]UALR/UAMS Joint Graduate Program in Bioinformatics, University of Arkansas at Little Rock, Little Rock, Arkansas 72204

Supplementary Figure S1

A DHX36 sequence coverage, 1 to 320, melanoma pull-down

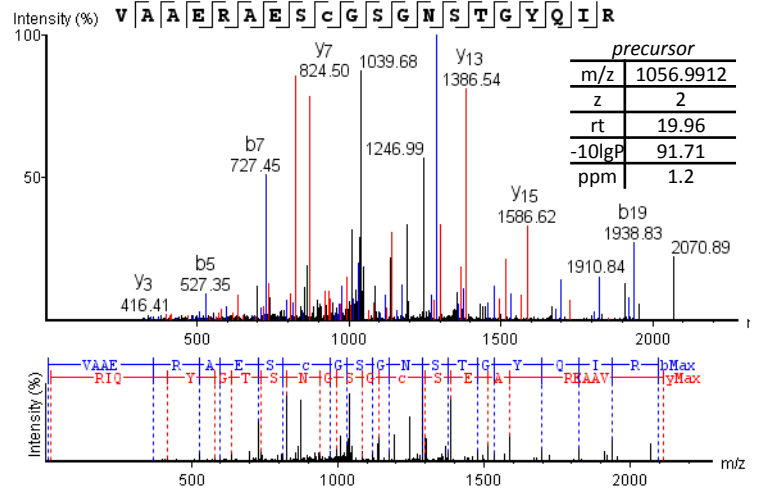
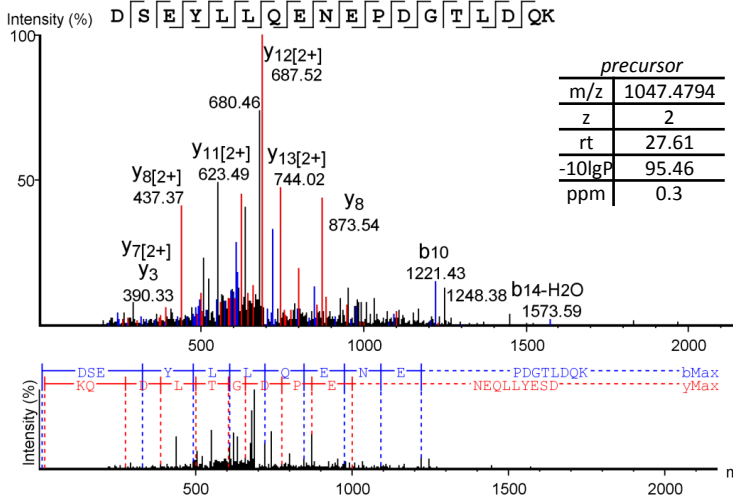
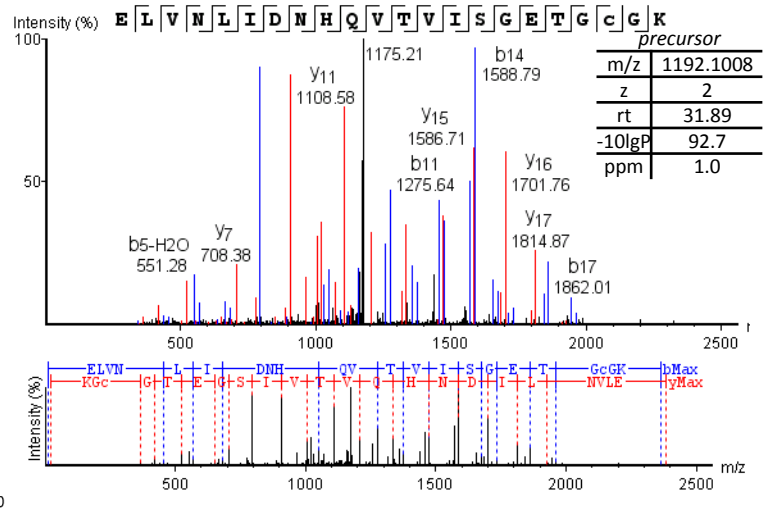
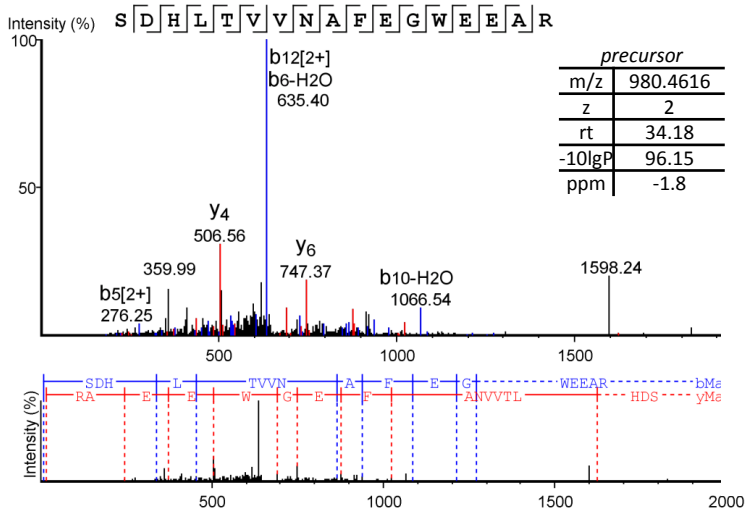


B DHX36 sequence coverage, 321 to 1008, melanoma pull-down

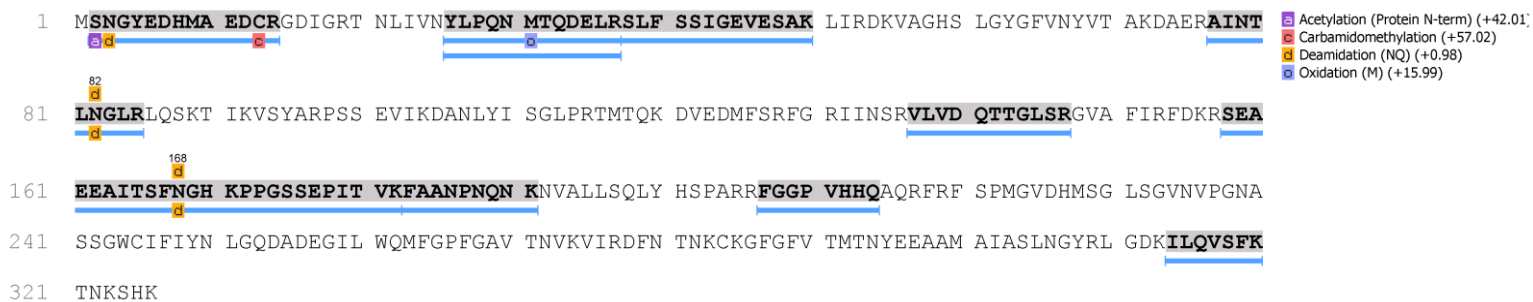


Supplementary Figure S1

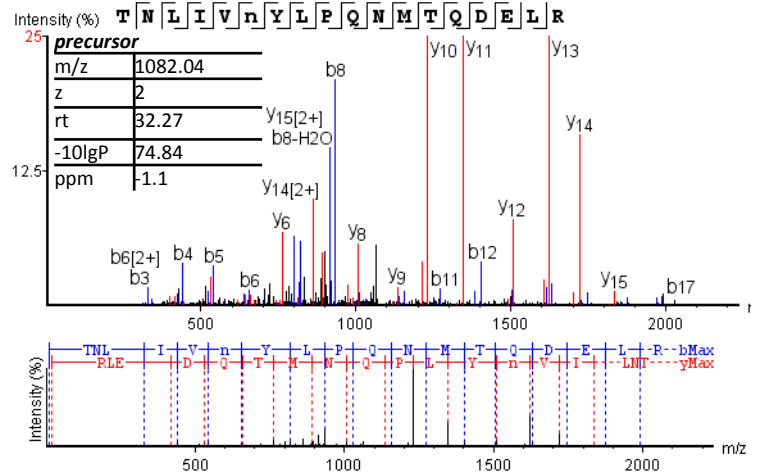
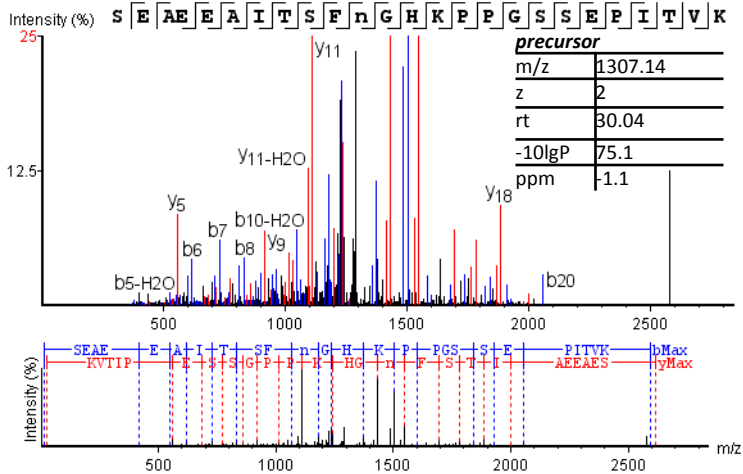
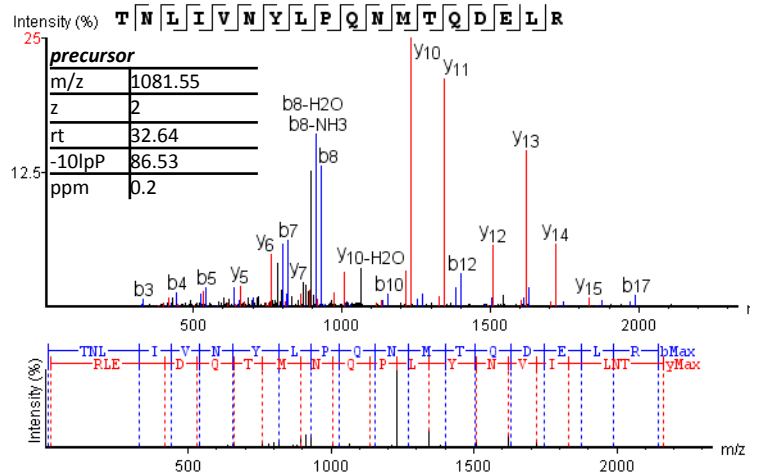
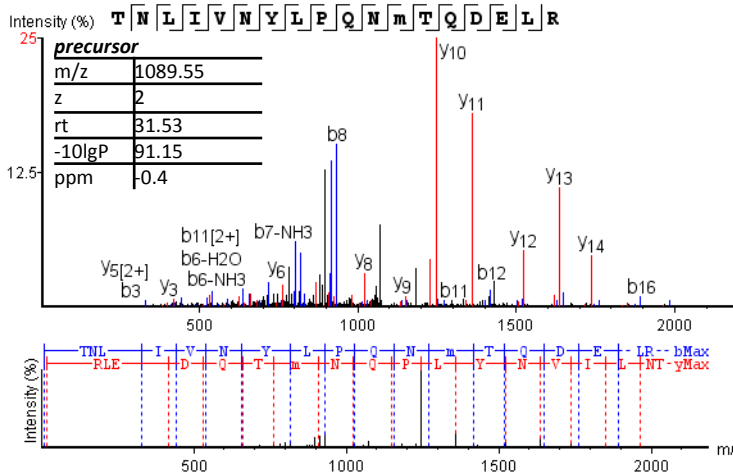
C DHX36, MS/MS spectra of top 4 scoring peptides, melanoma pull-down



D ELAV1 sequence coverage, melanoma pull-down

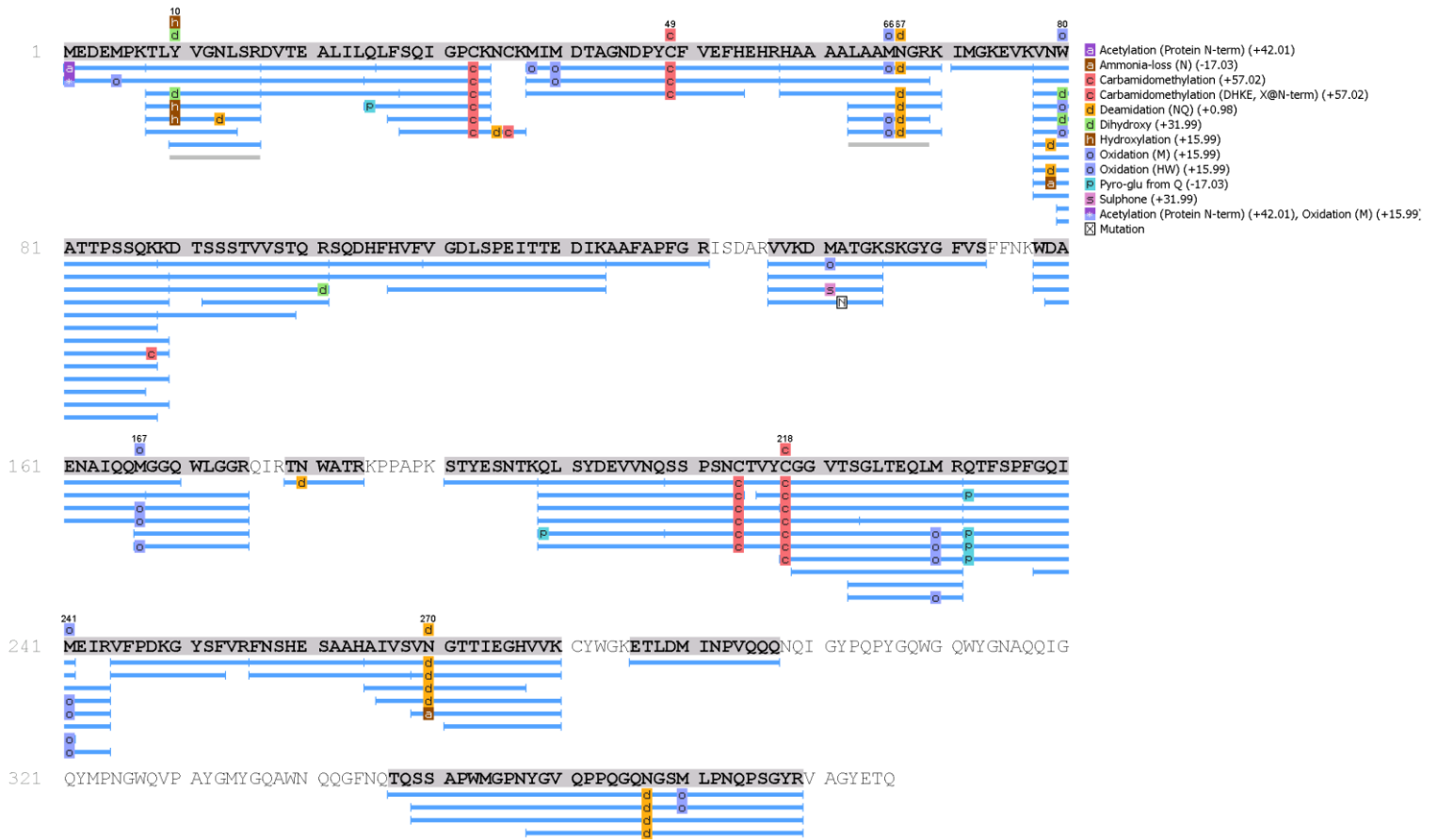


E ELAV1, MS/MS spectra of top 4 scoring peptides, melanoma pull-down



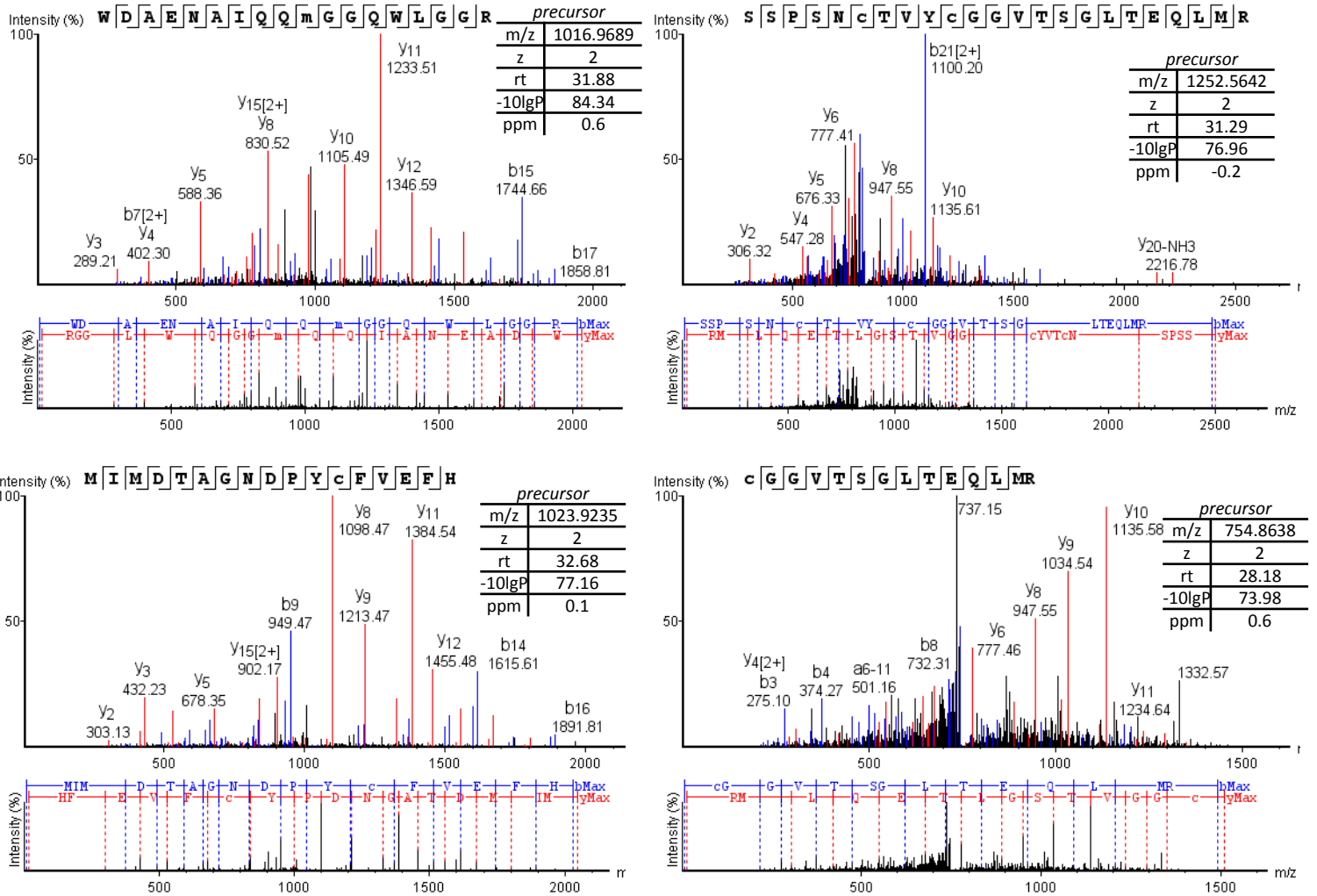
Supplementary Figure S1

F TIA-1 sequence coverage, melanoma pull-down



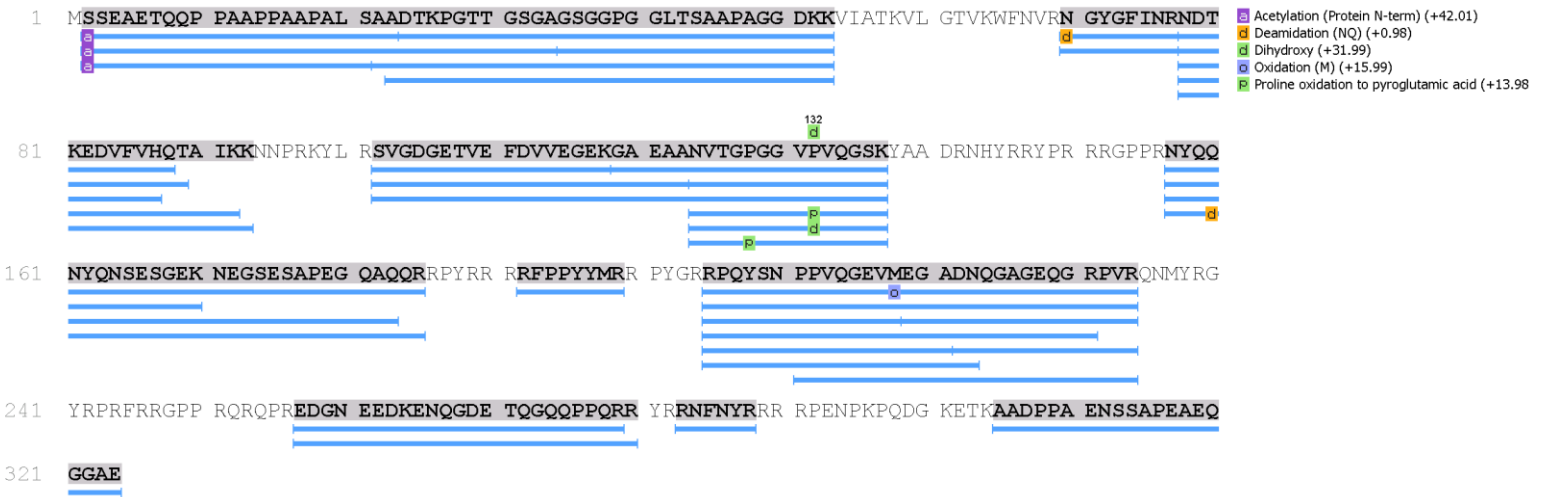
Supplementary Figure S1

G TIA-1, MS/MS spectra of top 4 scoring peptides, melanoma pull-down



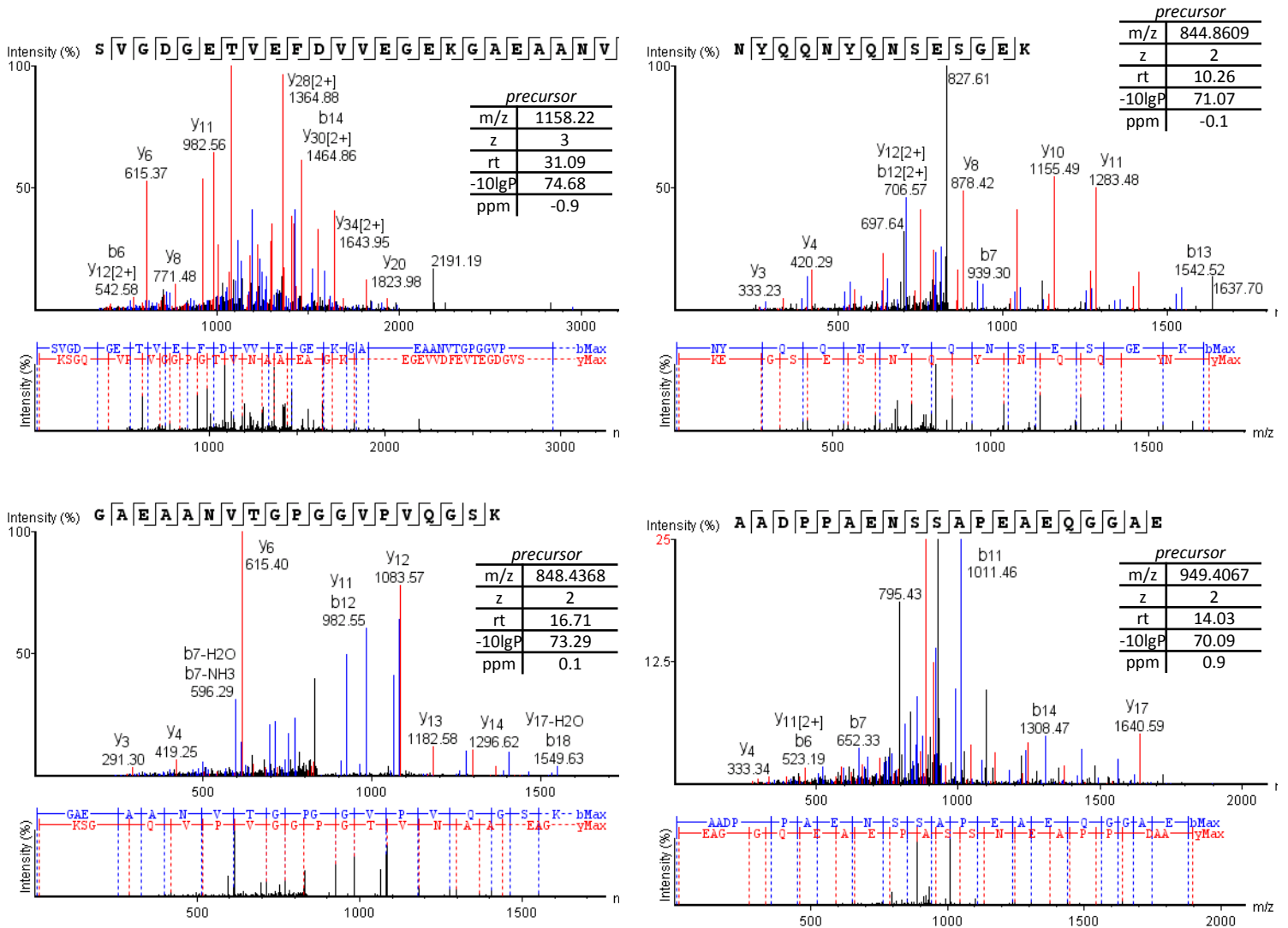
Supplementary Figure S1

H YB1 sequence coverage, melanoma pull-down



Supplementary Figure S1

I YB1, MS/MS spectra of top 4 scoring peptides, melanoma pull-down



Supplementary Figure S1. Sequence coverage and top-scoring spectra of identified G4DNA-bound proteins. (A,B) DHX36 sequence coverage. (C) four MS/MS spectra of the top-ranked DHX36 peptides. (D) ELAV1 sequence coverage. (E) four MS/MS spectra of the top-ranked ELAV1 peptides. (F) TIA-1 sequence coverage. (G) four MS/MS spectra of the top-ranked TIA-1 peptides. (H) YB1 sequence coverage. (I) four MS/MS spectra of the top-ranked YB1 peptides.