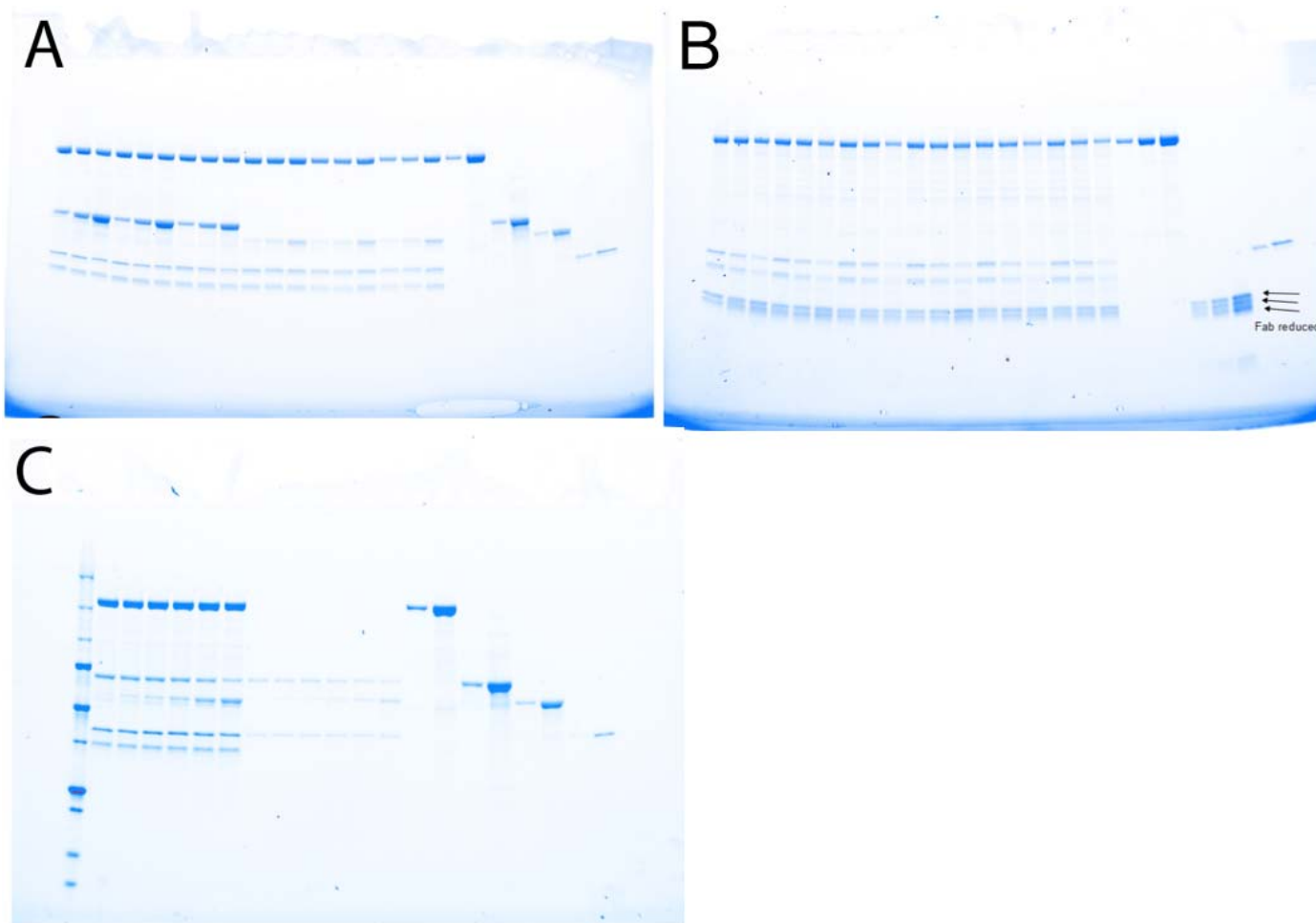
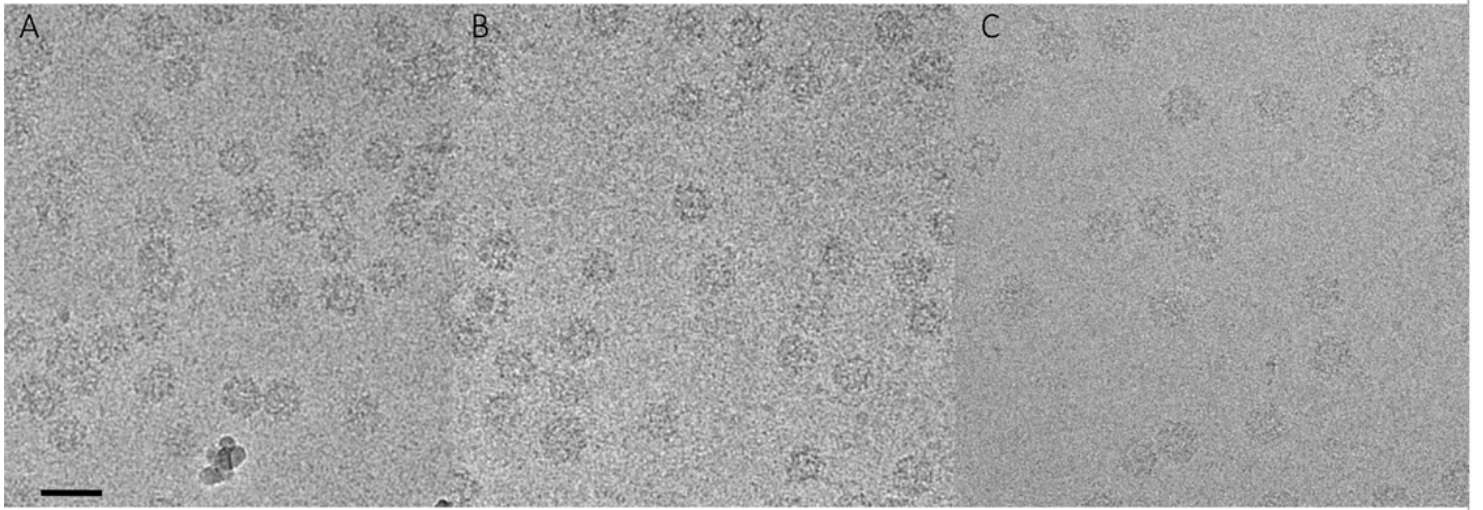


Supplemental data set 1: Primer Sequences used in PCR mutagenesis and expression vector construction:

1. CCCAAGCTTGGATGGCCCAGATTCTGCCAATTCG
2. CCGCTCGAGTCACATGCTGTACCCAAAGCCAG
3. CAGCCCATTGTTTATGGTCAGCCCGCCGGACCCAGTGTGGCAGTC
4. GACTGCCACACTGGGTCCGGCGGGCTGACCATAAACAATGGGCTG
5. CCCAGTGTGGCAGTCCCTCCCCAGCAGCTGATGCTAACAGCACCTTTTGGTTATGGTTATACTGCACC
6. GGTGCAGTATAACCATAACCAAAAAGGTGCTGTTAGCATCAGCTGCTGGGGAGGGACTGCCACACTGGG
7. CTGCACCACCATATGGGCAGCCACAGCTGATGCTAACACAGCCTGGCTTTGGGTACAGCATG
8. CATGCTGTACCCAAAGCCAGGCTGTGTTAGCATCAGCTGTGGCTGCCCATATGGTGGTGCAG
9. CAGCCCATTGTTTATGGTCAGCCCGACTATAAGGACGACGACGACAAGGCCGGACCCAGTGTGGCAGTC
10. GACTGCCACACTGGGTCCGGCCTTGTCGTCGTCGTCCTTATAGTCGGGCTGACCATAAACAATGGGCTG
11. CCCAGTGTGGCAGTCCCTCCCCAGGACTATAAGGACGACGACGACAAGGCACCTTTTGGTTATGGTTATACTGCACC
12. GGTGCAGTATAACCATAACCAAAAAGGTGCCTTGTCGTCGTCGTCCTTATAGTCCTGGGGAGGGACTGCCACACTGGG
13. CTGCACCACCATATGGGCAGCCAGACTATAAGGACGACGACGACAAGCAGCCTGGCTTTGGGTACAGCATG
14. CATGCTGTACCCAAAGCCAGGCTGCTTGTCGTCGTCGTCCTTATAGTCTGGCTGCCCATATGGTGGTGCAG
15. CATGCCATGGCTGAGTTGGATCCATTTGGC
16. GGAATTCAATGCACCAGGGGCGCCTGCTTC



Supplemental Dataset 2: Uncropped gel files used to make figure 5 and supplemental figure 5. Panel A. Lanes 1-18 of Fig. 5A came from this gel. The remaining lanes are standards (CHC, Hsc70, Hsc70 Δ cterm, and auxilin) that were used for quantitative analyses. Panel B. Lanes 1-9 of Fig. 5B came from the relevant lanes of this gel. Panel C. Supplemental figure 5B came from the relevant lanes of this gel.



Supplemental Dataset 3: Cryoelectron microscopy fields of: **A.** Clathrin cages. **B.** Hsc70ΔC-treated clathrin cages. **C.** Hsc70-treated clathrin cages. Bar indicates 1000 Å.