

Xing *et al.* Increased phosphorylation of collapsin response mediator protein-2 at Thr514 correlates with β -amyloid burden and synaptic deficits in Lewy Body dementias

Additional File 1: Supplementary Figure 1

CRMP2 is concentrated in cytosol-enriched fractions of postmortem human neocortex

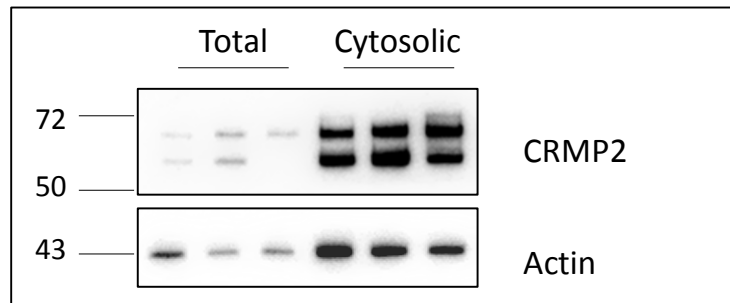


Fig. S1 Representative CRMP2 immunoblots of total and cytosol-enriched (“Cytosolic”) fractions of postmortem human neocortex (5 μ g protein loaded per lane). β -actin was used as a control to show concentration of soluble cytoskeletal proteins, including CRMP2, in the cytosol-enriched fractions using the fractionation procedure described in Methods.