

Xing *et al.* Increased phosphorylation of collapsin response mediator protein-2 at Thr514 correlates with β -amyloid burden and synaptic deficits in Lewy Body dementias

Additional File 2: Supplementary Figure 2

pThr514 CRMP2 is increased in total homogenate fractions of DLB

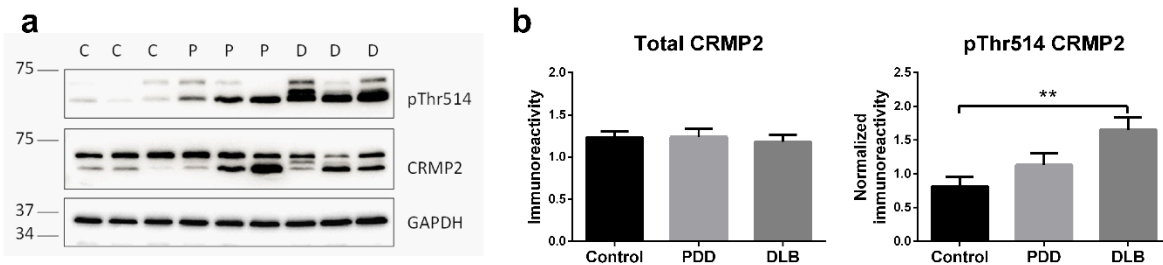


Fig. S2 a Representative immunoblots (with molecular weight indicators in kDa to the left) and **b** bar graphs of immunoreactivities of total CRMP2 and pThr514 CRMP2 normalized to total CRMP2 (mean \pm SEM in arbitrary units) in total brain homogenate fractions, with GAPDH used as loading control. Available N for control (C) = 19; PDD (P) = 19 and DLB (D) = 20.

** $p < 0.01$, significant difference for multiple pair-wise comparisons (one-way ANOVA with Bonferroni *post-hoc* tests).