

Xing *et al.* Increased phosphorylation of collapsin response mediator protein-2 at Thr514 correlates with β -amyloid burden and synaptic deficits in Lewy Body dementias

Additional File 5: Supplementary Figure 5

No correlation between pThr514 CRMP2 and α -synuclein immunoreactivity in LBD parietal cortex

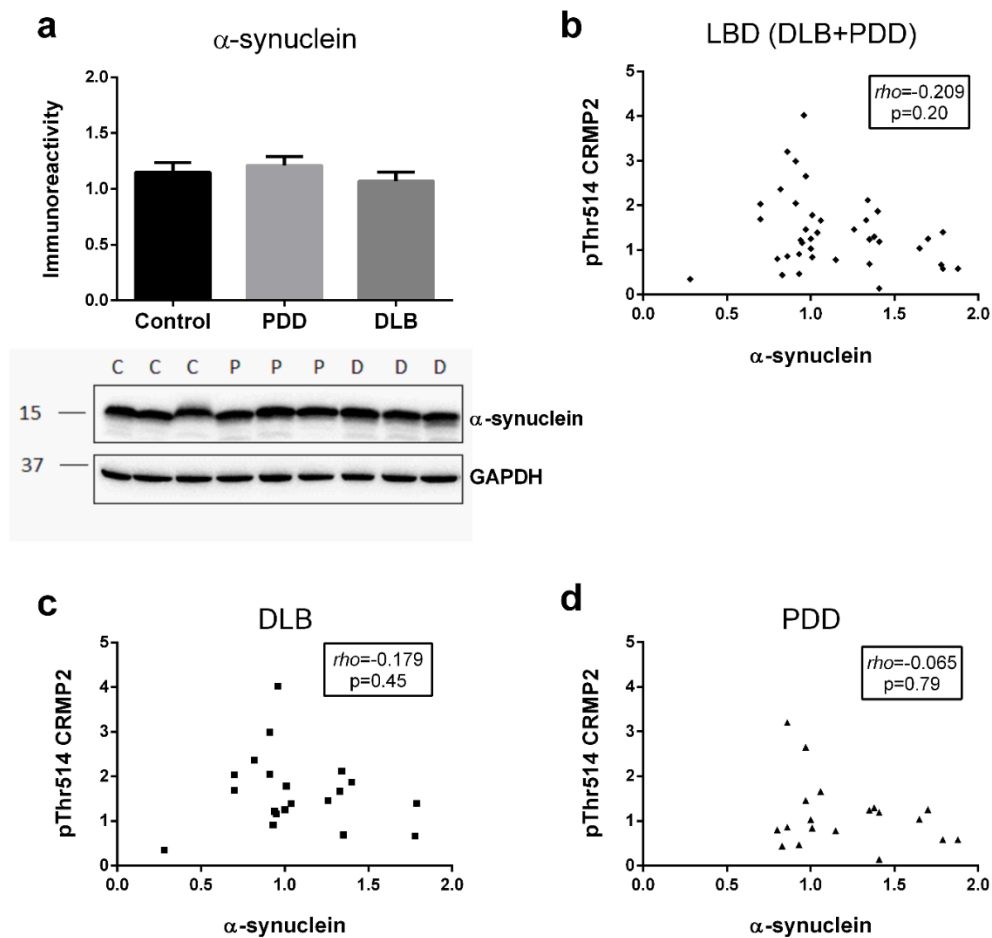


Fig. S5 a Bar graph of α -synuclein immunoreactivity (mean \pm SEM in arbitrary units) with representative immunoblots, with GAPDH as loading control. Scatter plots of pThr514 CRMP2 with α -synuclein immunoreactivity in total homogenate fractions of **b** LBD (DLB + PDD), **c** DLB and **d** PDD parietal cortex, with insets indicating ρ and p values. Available N for control (C) = 19; PDD (P) = 19 and DLB (D) = 20. No significant differences ($p > 0.05$) were found for multiple pair-wise comparisons of α -synuclein between groups (one-way ANOVA with Bonferroni's *post-hoc* tests), or for pThr514 CRMP2 correlations with α -synuclein (Spearman).