

Xing *et al.* Increased phosphorylation of collapsin response mediator protein-2 at Thr514 correlates with β -amyloid burden and synaptic deficits in Lewy Body dementias

Additional File 7: Supplementary Figure 7

Unchanged PP2A C-subunit immunoreactivity in DLB parietal cortex

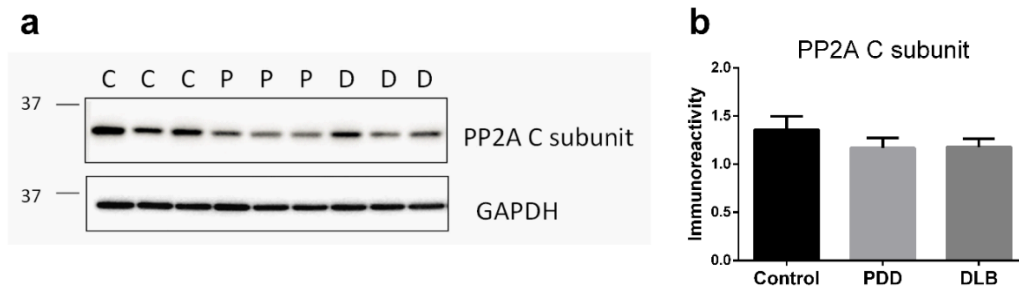


Fig. S7 **a** Representative immunoblots and **b** bar graphs of PP2A C-subunit immunoreactivity (mean \pm SEM in arbitrary units), with GAPDH as loading control. Available N for control (C) = 19; PDD (P) = 19 and DLB (D) = 20. No significant differences ($p > 0.05$) were found for multiple pair-wise comparisons of PP2A C-subunit between groups (one-way ANOVA with Bonferroni's *post-doc* tests).