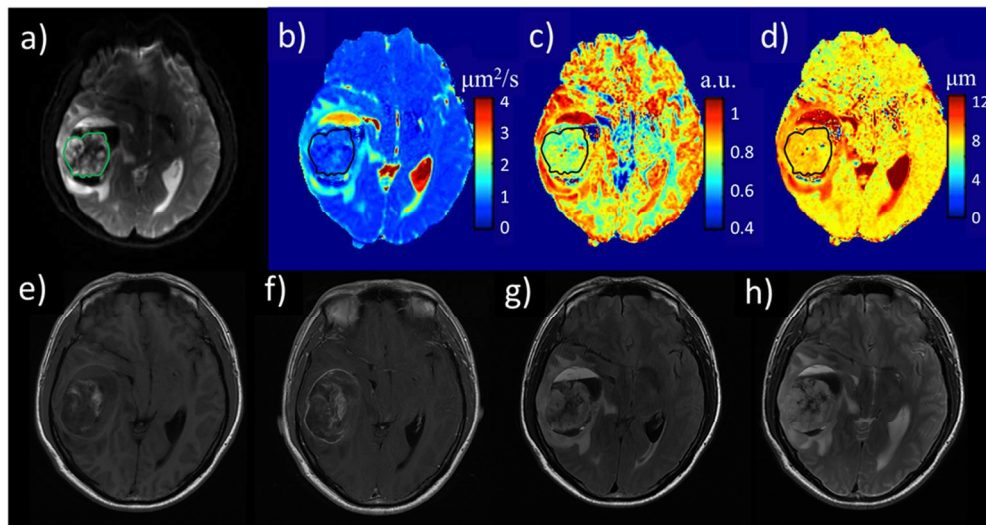


online fig A: A 41years-old female patient with a low-grade glioma (oligodendroglioma, WHO grade I). First row: T2W EPI at  $b = 0$  with the tumor ROI encircled in green (a), and FROC parameter maps of  $D$  (b),  $\beta$  (c), and  $\mu$  (d) with the tumor ROIs indicated by the black contours. Second row: axial pre-contrast T1W FLAIR (e), post-contrast T1W FLAIR (f), pre-contrast T2W FLAIR (g), and pre-contrast T2W PROPELLER (h). Compared to the GBM patient in Fig. 2, all three FROC parameters exhibited higher values.  
119x60mm (300 x 300 DPI)



online fig B: A 38 years-old male patient with a high-grade glioma (GBM, WHO grade IV). First row: T2W EPI at  $b=0$  with the tumor ROI encircled in green (a), and FROC parameter maps of  $D$  (b),  $\beta$  (c), and  $\mu$  (d) with the tumor ROIs indicated by the black contours. Second row: axial pre-contrast T1W FLAIR (e), post-contrast T1W FLAIR (f), T2W FLAIR (g), T2W PROPELLER (h). Compared to the oligodendroglioma patient in Fig. 1, all three FROC parameters exhibited lower values.  
 119x63mm (300 x 300 DPI)