

SUPPLEMENTAL INFORMATION

Enhancing Intracranial Delivery of Clinically Relevant Non-viral Gene Vectors

Sneha Berry^{a,b,#}, Panagiotis Mastorakos^{a,c,#}, Clark Zhang^{a,d}, Eric Song^{a,b}, Himat Patel^a, Jung Soo Suk^{a,c,*}, Justin Hanes^{a,c,d,e,*}

^a The Center for Nanomedicine at the Wilmer Eye Institute, Johns Hopkins University School of Medicine, Baltimore, MD, USA

^b Center for Biotechnology Education, Krieger School of Arts and Sciences, Johns Hopkins University, Baltimore, MD, USA

^c Department of Ophthalmology, Johns Hopkins University School of Medicine, Baltimore, MD, USA

^d Department of Biomedical Engineering, Johns Hopkins University School of Medicine, Baltimore, MD, USA

^e Department of Chemical & Biomolecular Engineering, Johns Hopkins University, Baltimore, MD, USA

#contributed equally

*To whom correspondence should be addressed.

E-mail: Jung Soo Suk (jsuk@jhmi.edu) or Justin Hanes (hanes@jhmi.edu)

Telephone: J.S.S (+1 410 614 4526) or J.H. (+1 443 287 7921)

FAX: J.H. (+1 443 287 7922)

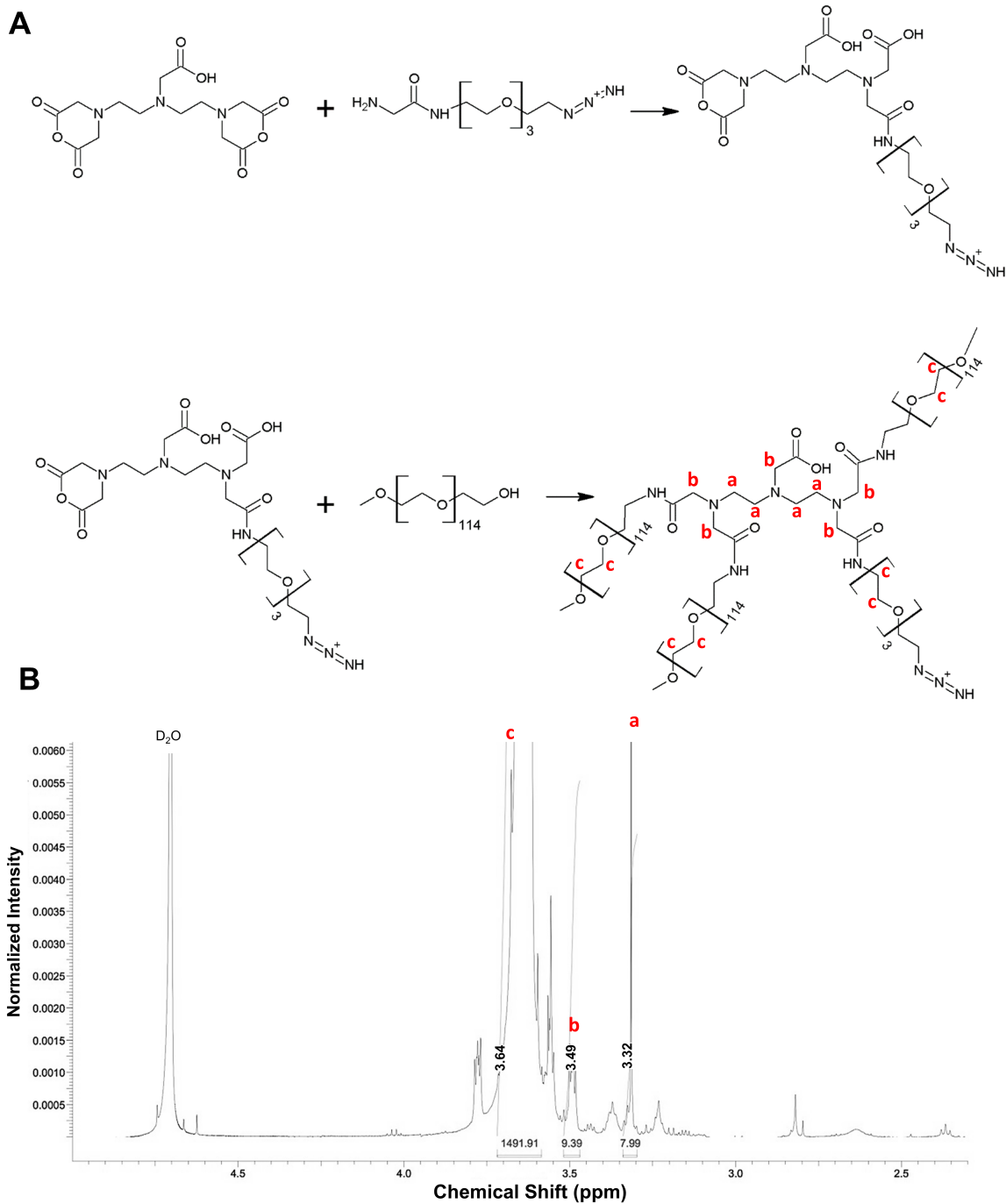


Figure S1: Synthesis of BrPEG. (A) Synthesis of azido-DTPA by reacting DTPA anhydride with 11-azido-3,6,9-trioxaundecanamine and subsequent PEGylation via amine-carboxyl coupling (B) ¹H-NMR spectra for BrPEG. Peaks a and b correspond to protons on DTPA and the peak c corresponds to PEG. Based on the NMR analysis, 3.27 5 kDa PEG chains on average are conjugated to each DTPA molecule.

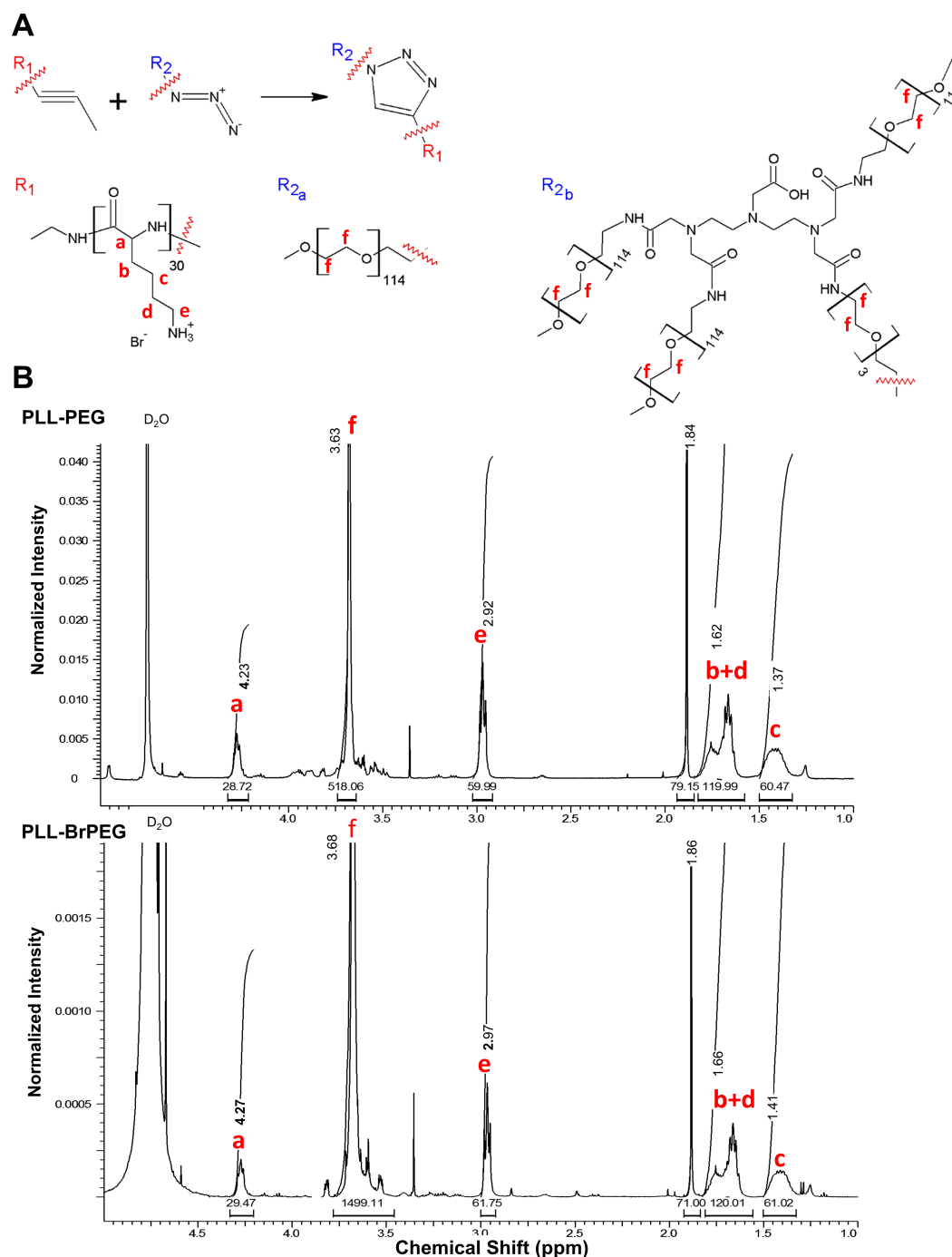


Figure S2: Synthesis of PLL-PEG and PLL-BrPEG. (A) Alkyne-azide cycloaddition click chemistry reaction for synthesis of PLL-PEG and PLL-BrPEG. R_1 represents PLL and R_2 represents linear 5 kDa PEG (R_{2a}) or branched 15 kDa PEG (R_{2b}) with chemical structures depicted below the reaction scheme. Red letters correspond to the NMR peaks of Fig. 1B **(B)** ^1H -NMR spectra for end products of the PEGylation reactions purified by chromatography and dialysis. Peaks a, b+d, c and e correspond to protons on lysine residues as noted in Fig. 1A, peak f corresponds to PEG and peak g corresponds to acetate counter-ions. The degrees of PEGylation were determined by quantitative analysis of NMR spectrograms. The area under curves of PEG peaks were normalized by those of PLL peaks, yielding approximately 3 times higher PEG to PLL ratio for PLL-BrPEG compared to PLL-PEG.

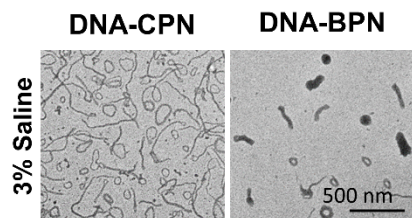


Figure S3: TEM images representative of DNA-CPN and DNA-BPN 1 hour post treatment with 3% saline; Scale bar: 500 nm.