

Supplementary Information:

A polymorphic (GA/CT)*n*- SSR influences promoter activity of *Tryptophan decarboxylase* gene in *Catharanthus roseus* L. Don.

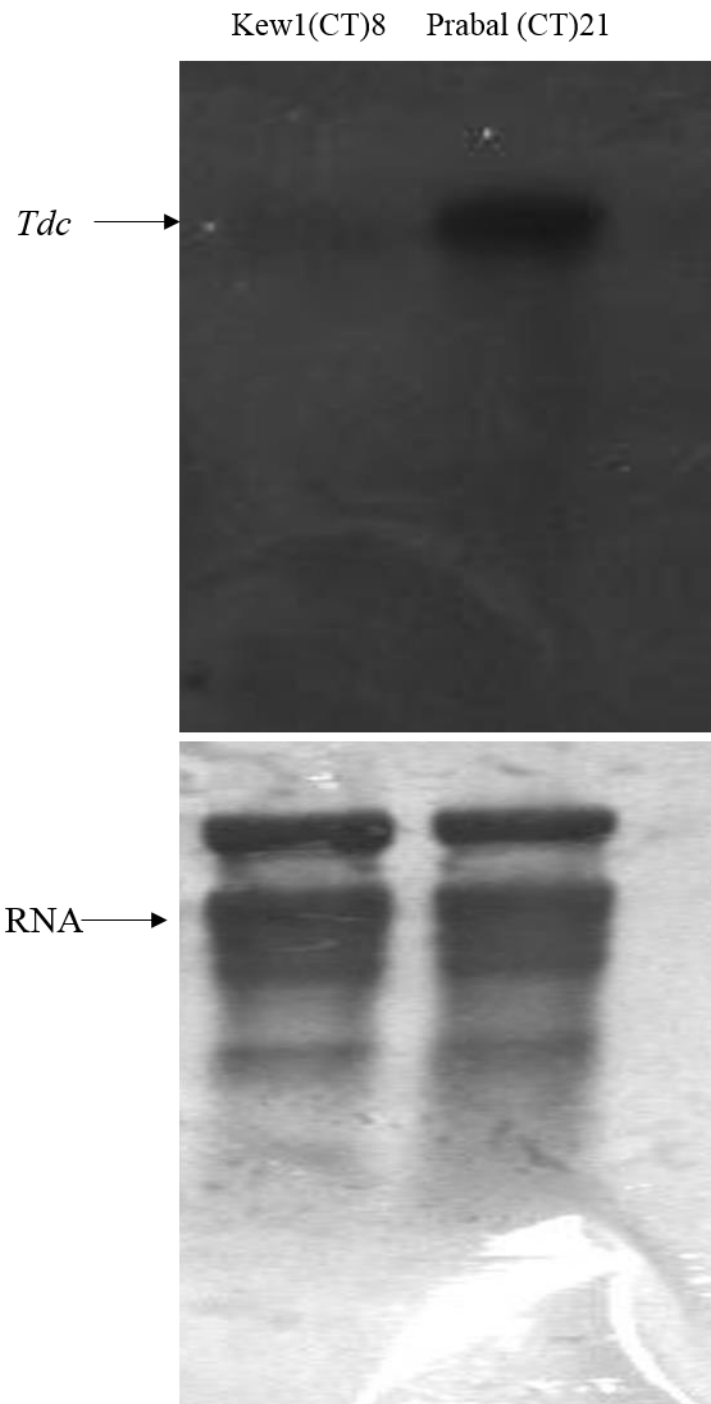
Santosh Kumar and Sabhyata Bhatia.

Supplementary Figure Legends

Supplementary Figure 1. Northern blot expression analysis of *Tdc* gene in the two *C. roseus* accessions, Kew1 and Prabal having (CT)₈ and (CT)₂₁ motifs respectively in the 5' UTR of *Tdc* gene. 10µg of total RNA was probed with cDNA. Ribosomal RNA was used as loading control.

Supplementary Figure 2. Nuclear run-on transcription to measure rate of *Tdc* gene transcription. PCR amplified DNA of *Tdc* (target gene), *Rps9* and SAND (positive control) and MATE (negative control) was blotted on to the nitrocellulose membrane and hybridized with the nascent UTP labeled run-on transcripts from Kew1 and Prabal.

Supplementary Figure 1.



Supplementary Figure 2.

