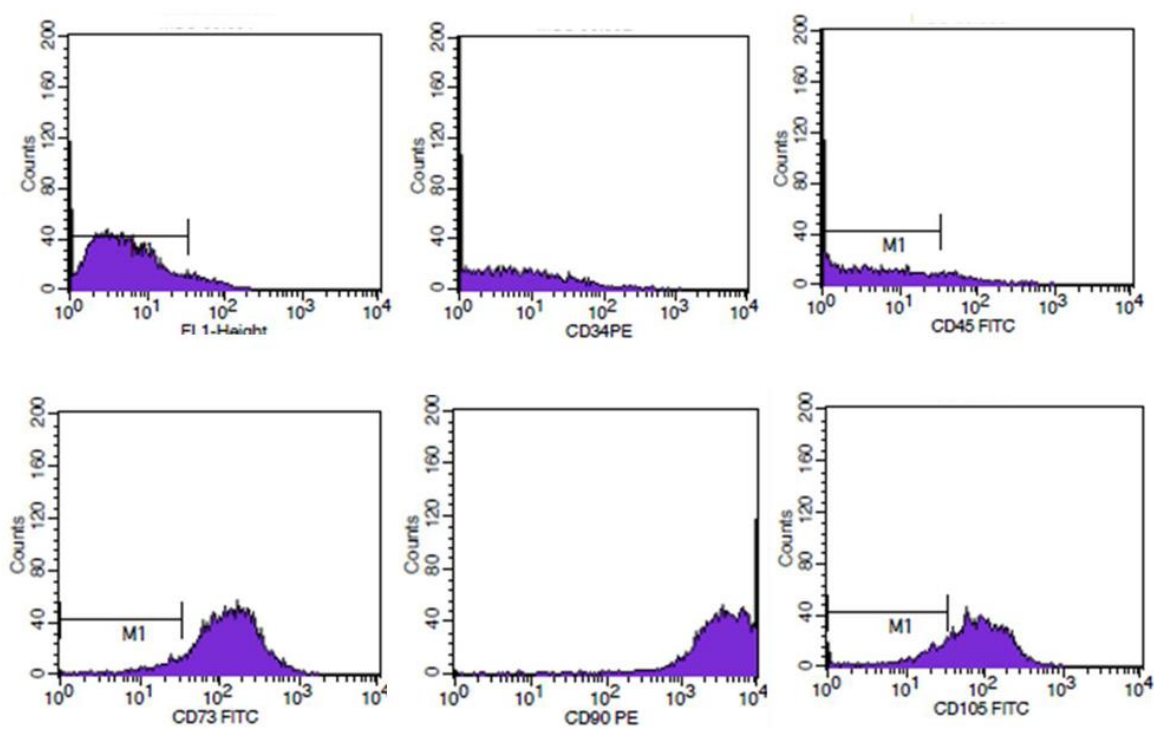
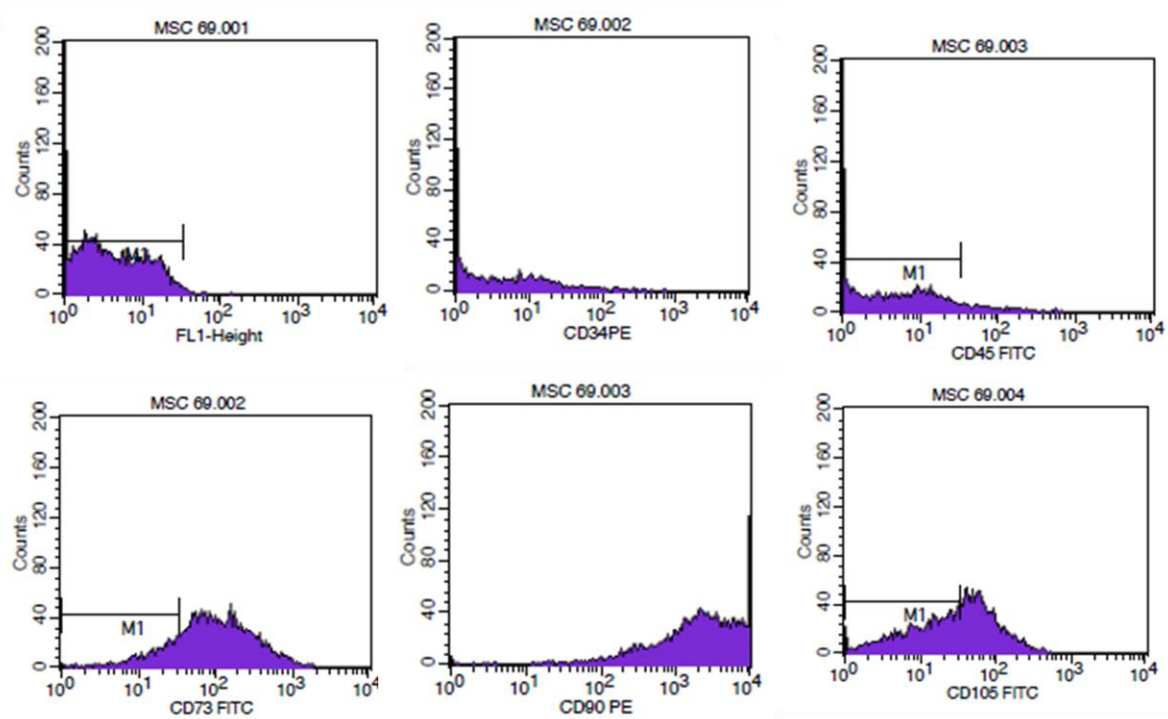


Supplementary Figure 1: Immunophenotypic characteristics of MSCs from a representative MDS patient. The forward scatter versus side scatter dot plot shows the gate of the MSC population (R1). The MDS-MSCs were positive for CD73(C-R3), CD90 (D-R4) and CD105 (E-R3) and were negative for CD34 (C-R4) and CD45 (D-R3) surface markers.

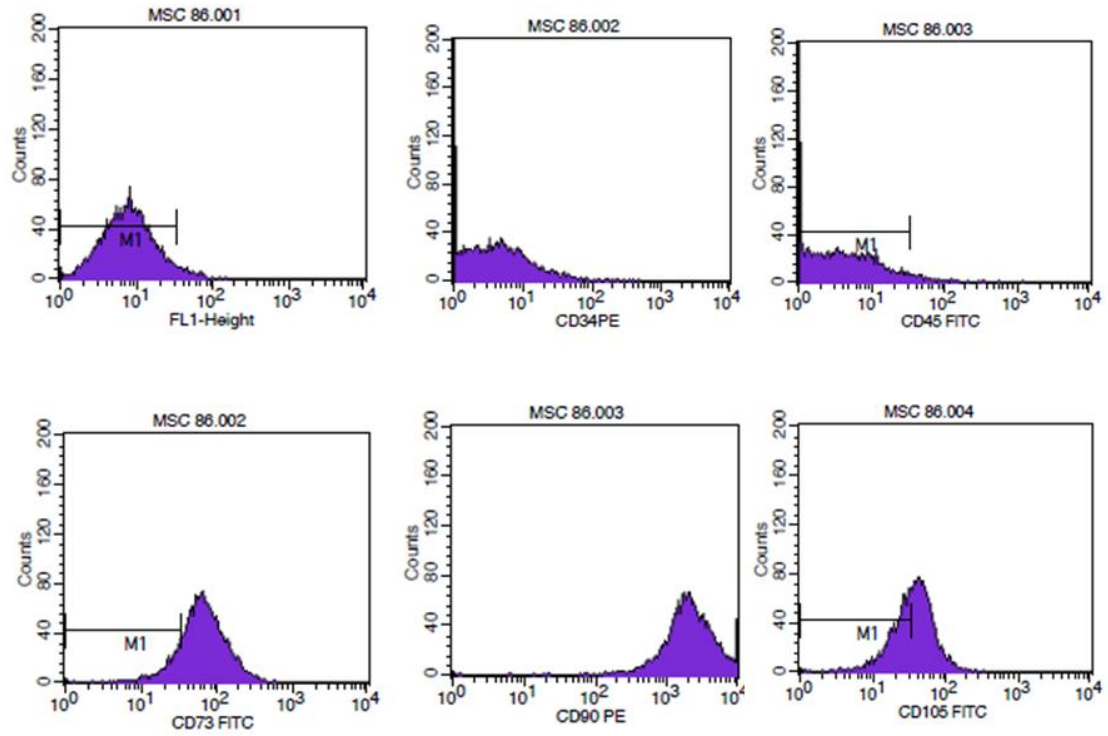
A



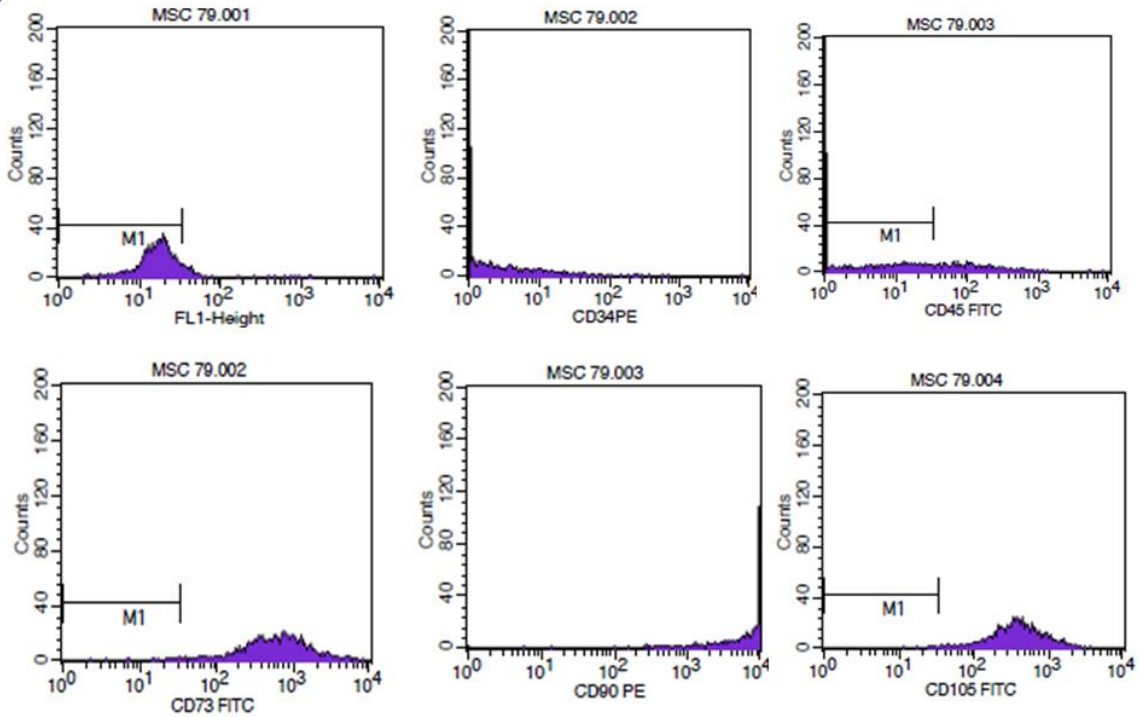
B



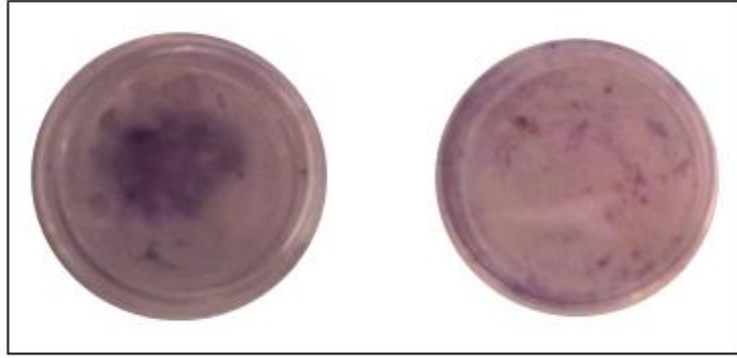
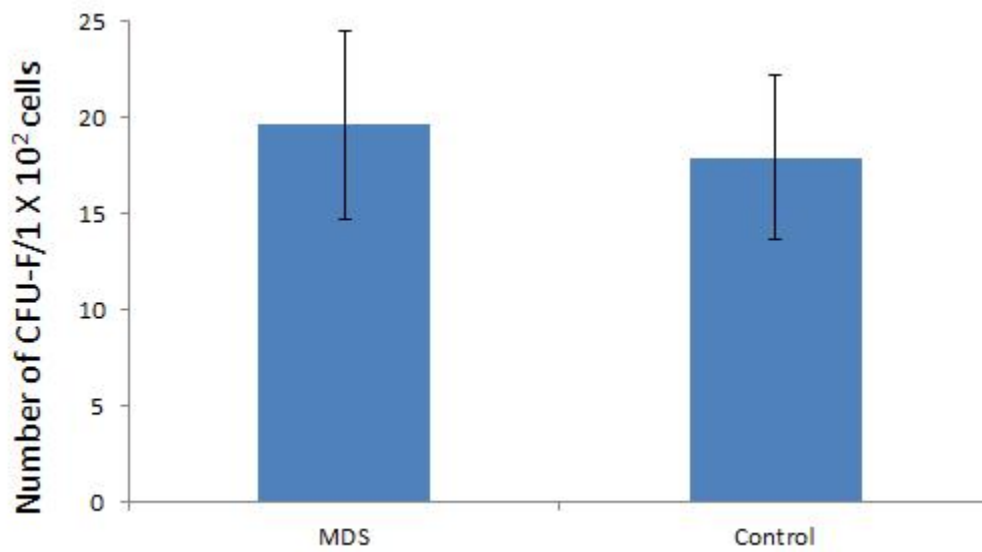
C



D



Supplementary Figure 2: Flowcytometric analysis of MSCs. Representative FACS plots of A-control MSCs, B-RCUD MSCs, C-RCMD MSCs and D-RAEB MSCs expressing CD markers CD34, C45, CD73, CD90 and CD105.

A**B**

Supplementary Figure 3: A- CFU-F assay for MDS-MSCs and control-MSCs. B-Mean CFU-F frequency of MDS-MSCs was 19.63 ± 4.91 (range: 7-41; n = 16) and that of controls was 17.93 ± 4.25 (range: 8-35; n = 5). CFU-F frequencies of MDS-MSCs were not significantly different from that of control MSCs ($p > 0.05$).