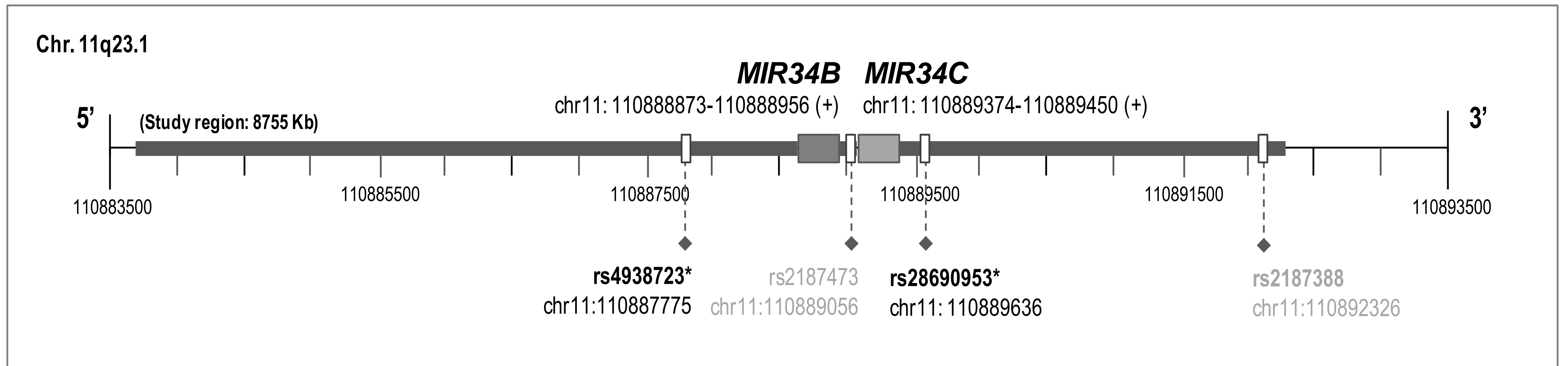


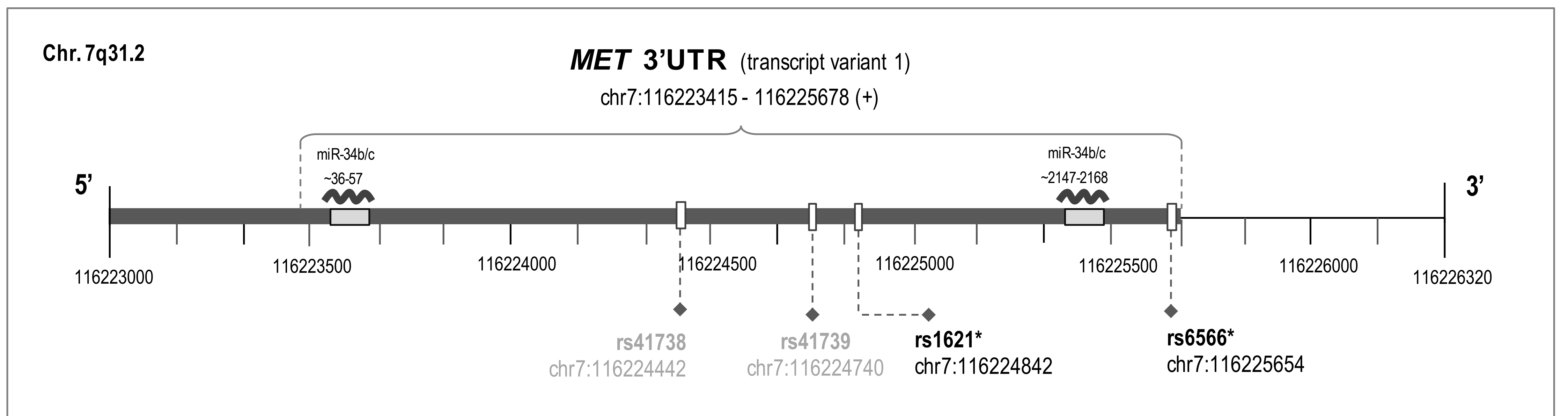
Supplementary Figure 1

Graphical representation of the chromosomal region containing the miR-34b/c cluster and the 3' Untranslated Regions (3'UTRs) of the *MET*, *NOTCH2* and *HMGA2* genes, including the SNPs selected for the association study and the putative miRNA binding sites. (*) In bold, SNPs associated with ADHD.

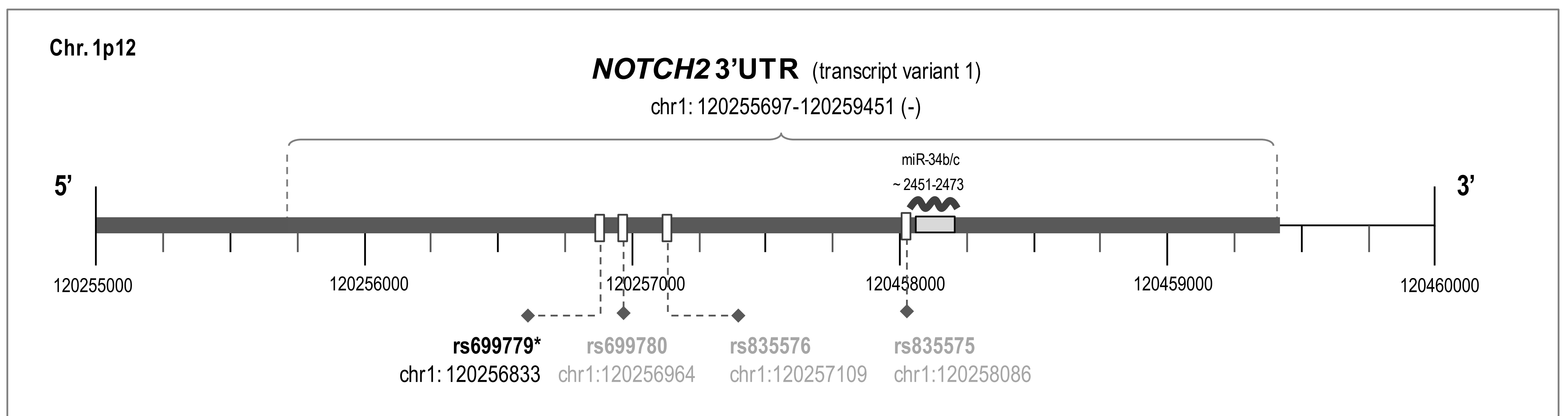
MIR34B and *MIR34C*



MET



NOTCH2



HMGA2

