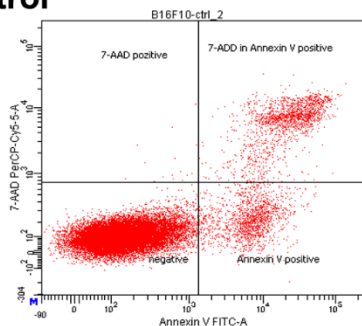


Figure S1. The presence of inflammatory immune cells in melanoma tumor after pDNA electrotransfer. Blue arrows indicates infiltration of granulocytes at the edge of the tumor.

Table S1. Primers used in this study.

BA2-for	GAAGTGTGACGTTGACATCC
BA2-rev	ACTCATCGTACTCCTGCTTG
GAPDH-FW	TTCACCACCATGGAGAAGGC
GAPDH-RV	GGCATGGACTGTGGTCATGA
mAIM2-807F	CCACCCGCAGTGACAATGACTTTA
mAIM2-954R	GCTTTCAGCACCGTGACAACAAGT
mcGas-for	GTGAGGACCAATCTAAGACGAG
mcGas-rev	AGCATGTTTTTCTCTATCCCGTG
mDAI-1081F	TGCTTTCTAGAGGACGCCACCATT
mDAI-1213R	TGGCTTCAGAGCTTGTACCTGTGT
mDDX41-for	AGTGCTCATGGACCTCAAAG
mDDX41-rev	CTCCACAGAAGGCACAGC
mDDX60-4160F	ACTGGAACACTCGCTTTGG
mDDX60-4306R	GAAGTAGACATCACCCAACAGG
mDHX9-for	AAACTCCCCATTGAACCTCG
mDHX9-rev	TGTATCCCAGGCGTTTTCC
mDHX36-for	CCCAAAGTTGCTAAAATCCGAC
mDHX36-rev	CCAGTTGTAGTGGAAAGTCTGTC
mLRR-462F	CCAGTTTGCCGAAGTGAAAG
mLRR-559R	CTCTCCGTTGGTGGCTATTT
mp202-1145F	CCCGGGAAACACCATTGCTTTATCAG
mp202-1233R	TCTTCACCTCAGACACGCTGGAAT
mp204-693F	CCAGTCACCAATACTCCACAG
mp204-831R	GAGCACCATCACTGTCAGG
mRIG1-1581F	GCTGCCATGCAGAGTGATTGGAAA
mRIG1-1749R	ACTCTTGGCCACACAGCTGTAGAA
mTLR9-88F	GAATCCTCCATCTCCCAACAT
mTLR9-179R	CAGAGTCTCAGCCAGCAC
mIFNb1-241F	TGGCCATCCAAGAGATGCTCCAGA
mIFNb1-364R	AGAAACACTGTCTGCTGGTGGAGT
mIL1b-140f	AGTTGACGGACCCCCAAAAGA
mIL1b-232r	TGCTGCTGCGAGATTTGAAG

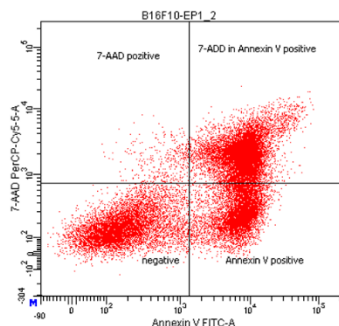
Control



Experiment Name: Masa_Annexin-V_7-AAD_10-02-2016
Specimen Name: B16F10
Tube Name: ctrl_2
Record Date: Feb 10, 2016 8:58:45 AM

Population	#Events	%Parent%	Grand Pa...	%Total	Annexin V ... 7-AAD Per...	
					Median	Median
All Events	40,000	###	###	100.0	146	72
P1	27,733	69.3	###	69.3	158	97
7-AAD positive	15	0.1	0.0	0.0	623	980
7-ADD in Annexin V positive	1,752	6.3	4.4	4.4	24,162	6,910
negative	24,390	87.9	61.0	61.0	140	89
Annexin V positive	1,576	5.7	3.9	3.9	6,922	203

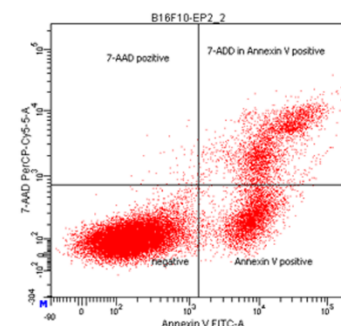
EP



Experiment Name: Masa_Annexin-V_7-AAD_10-02-2016
Specimen Name: B16F10
Tube Name: EP1_2
Record Date: Feb 10, 2016 9:03:51 AM

Population	#Events	%Parent%	Grand Pa...	%Total	Annexin V ... 7-AAD Per...	
					Median	Median
All Events	40,000	###	###	100.0	1,892	208
P1	26,241	65.6	###	65.6	5,965	500
7-AAD positive	349	1.3	0.9	0.9	689	1,614
7-ADD in Annexin V positive	11,206	42.7	28.0	28.0	8,408	1,920
negative	7,673	29.2	19.2	19.2	168	148
Annexin V positive	7,013	26.7	17.5	17.5	7,362	279

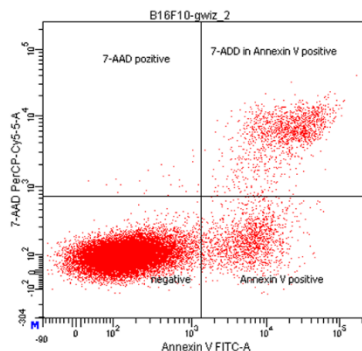
EP1



Experiment Name: Masa_Annexin-V_7-AAD_10-02-2016
Specimen Name: B16F10
Tube Name: EP2_2
Record Date: Feb 10, 2016 9:10:09 AM

Population	#Events	%Parent%	Grand Pa...	%Total	Annexin V ... 7-AAD Per...	
					Median	Median
All Events	40,000	###	###	100.0	195	88
P1	27,892	69.7	###	69.7	219	116
7-AAD positive	44	0.2	0.1	0.1	835	1,117
7-ADD in Annexin V positive	3,390	12.2	8.5	8.5	14,300	2,949
negative	20,569	73.7	51.4	51.4	162	91
Annexin V positive	3,889	13.9	9.7	9.7	7,750	245

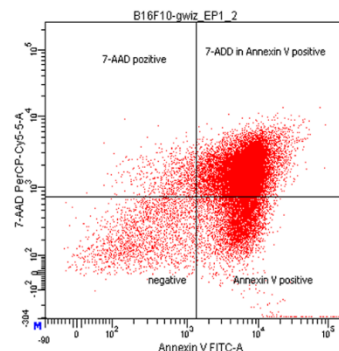
pDNA



Experiment Name: Masa_Annexin-V_7-AAD_10-02-2016
Specimen Name: B16F10
Tube Name: gwiz_2
Record Date: Feb 10, 2016 9:01:18 AM

Population	#Events	%Parent%	Grand Pa...	%Total	Annexin V ... 7-AAD Per...	
					Median	Median
All Events	40,000	###	###	100.0	139	58
P1	24,283	60.7	###	60.7	160	91
7-AAD positive	23	0.1	0.1	0.1	516	1,159
7-ADD in Annexin V positive	1,542	6.4	3.9	3.9	20,930	6,106
negative	21,054	86.7	52.6	52.6	138	82
Annexin V positive	1,664	6.9	4.2	4.2	6,041	174

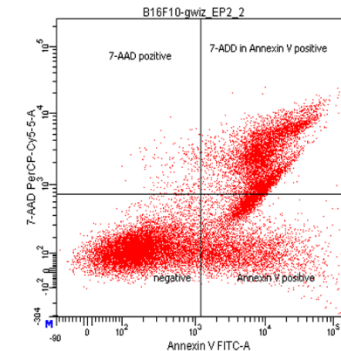
EP+pDNA



Experiment Name: Masa_Annexin-V_7-AAD_10-02-2016
Specimen Name: B16F10
Tube Name: gwiz_EP1_2
Record Date: Feb 10, 2016 9:06:15 AM

Population	#Events	%Parent%	Grand Pa...	%Total	Annexin V ... 7-AAD Per...	
					Median	Median
All Events	40,000	###	###	100.0	4,779	898
P1	27,889	69.7	###	69.7	6,272	1,292
7-AAD positive	658	2.4	1.6	1.6	765	1,324
7-ADD in Annexin V positive	19,780	70.9	49.4	49.4	6,901	1,632
negative	1,807	6.5	4.5	4.5	311	221
Annexin V positive	5,644	20.2	14.1	14.1	5,701	407

EP1+pDNA



Experiment Name: Masa_Annexin-V_7-AAD_10-02-2016
Specimen Name: B16F10
Tube Name: gwiz_EP2_2
Record Date: Feb 10, 2016 9:12:49 AM

Population	#Events	%Parent%	Grand Pa...	%Total	Annexin V ... 7-AAD Per...	
					Median	Median
All Events	40,000	###	###	100.0	573	131
P1	24,311	60.8	###	60.8	1,681	186
7-AAD positive	200	0.8	0.5	0.5	728	1,755
7-ADD in Annexin V positive	7,287	30.0	18.2	18.2	9,674	2,325
negative	11,220	46.2	28.1	28.1	181	109
Annexin V positive	5,604	23.1	14.0	14.0	4,904	172

Figure S2. Cell death mechanisms as determined by flow cytometry (FITC Annexin V Apoptosis Detection Kit with 7-AAD, BioLegend, San Diego, CA, USA)