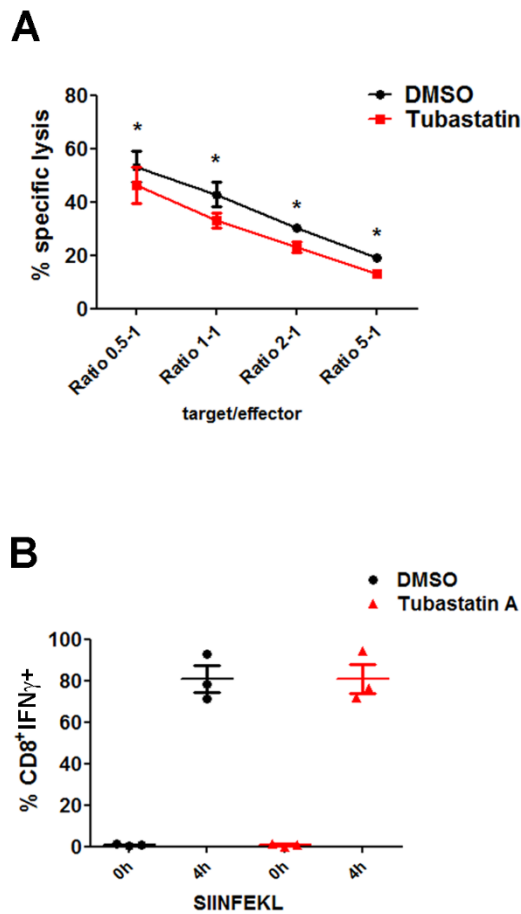


## Supplemental Figure 1



### Supplementary Figure 1. HDAC6 inhibition prevents cytotoxic activity of CTLs.

(A) Cytotoxic assay showing specific lysis of SIINFEKL-pulsed EL4 target cells (1  $\mu$ M) that were mixed with OT-I CTLs matured *in vitro* and pre-treated with vehicle (DMSO) or Tubastatin A for 3 h. Graph shows mean $\pm$ s.e.m. of specific lysis for 5 h at the indicated target to effector ratios. All killing assay were performed in triplicate. (n=3). \*, P < 0.05. (Paired T-test). (B) Percentage of IFN $\gamma$  positive cells of Tubastatin A-treated or not (DMSO) OT-I CTLs upon activation with SIINFEKL-pulsed EL4 target cells for the indicated times. Graph shows mean $\pm$ s.e.m, (n=3). Mann Whitney test.