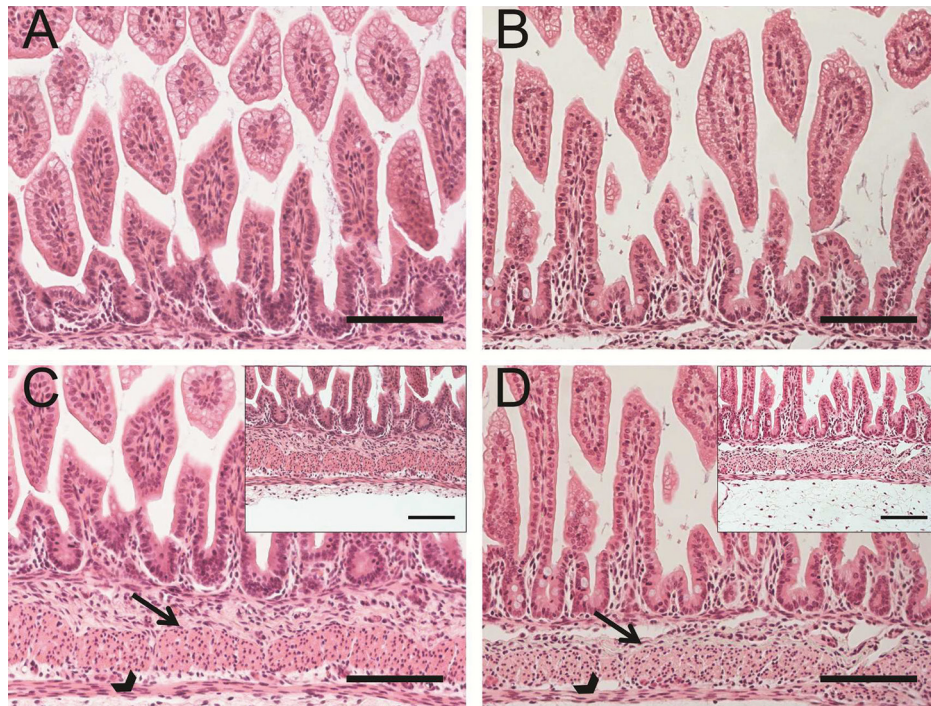


Supplemental Data

Global Hypoxia-Ischemia Induced Inflammation and Structural Changes in the Preterm Ovine Gut Which Were Not Ameliorated by Mesenchymal Stem Cell Treatment

Maria Nikiforou,^{1,2} Carolin Willburger,¹ Anja E de Jong,¹ Nico Kloosterboer,¹ Reint K Jellema,^{1,2} Daan RMG Ophelders,^{1,2} Harry WM Steinbusch,² Boris W Kramer,^{1,2,3} and Tim GAM Wolfs^{1,3}

Online address: <http://www.molmed.org>



Supplementary Figure S1. Morphological examination of intestinal sections that were stained for H&E. No epithelial injury was detected in (A) control and (B) HI animals. In addition, the thickness of both muscle layers circular (arrow) and longitudinal (arrowhead) varied between the groups (C: control and D: HI). The scale bar in all panels represents 100 μ m.

Supplementary Table S1. Primers used for qPCR.

Primer	Fw sequence	Rv sequence
<i>ovRPS15</i>	CGAGATGGTGGGCAGCAT	GCTTGATTCCACCTGGTTGA
<i>IL-1β</i>	AGAATGAGCTGTTATTTGAGGTTGATG	GTGAGAAATCTGCAGCTGGATGT
<i>IL-17</i>	TGTGAGGGTCAACCTGAACAT	TGATAATCGGTGGGCCTCTG

Abbreviations: Fw: forward; IL: interleukin; qPCR: quantitative real-time polymerase chain reaction; Rv: reverse.