

## Supporting information

### **Global analysis of differential gene expression related to long-term sperm storage in oviduct of Chinese Soft-Shelled Turtle *Pelodiscus sinensis***

Tengfei Liu<sup>1</sup>, Ping Yang<sup>1</sup>, Hong Chen<sup>1</sup>, Yufei Huang<sup>1</sup>, Yi Liu<sup>1</sup>, Yasir Waqas<sup>1</sup>, Nisar Ahmed<sup>1</sup>, Xiaoya Chu<sup>1</sup>, Qiusheng Chen<sup>1\*</sup>

## **Supporting information**

**Supplementary Fig. S1** Western blot analysis of LC3B in the *P. sinensis* oviduct and rat liver with the positive control. The negative controls were obtained by exchanging the primary antibody with 0.01 M PBS.

**Supplementary Fig. S2** The identified sperm storage-related DEGs involved in Toll-like receptor (TLR) signalling pathway (A), apoptosis pathway (B), p53 signalling pathway (C), and regulation of autophagy pathway (D). These pathways originate from Kyoto Encyclopedia of Genes and Genome (KEGG) database. The red and green colors indicate up- and down-regulated genes, respectively.

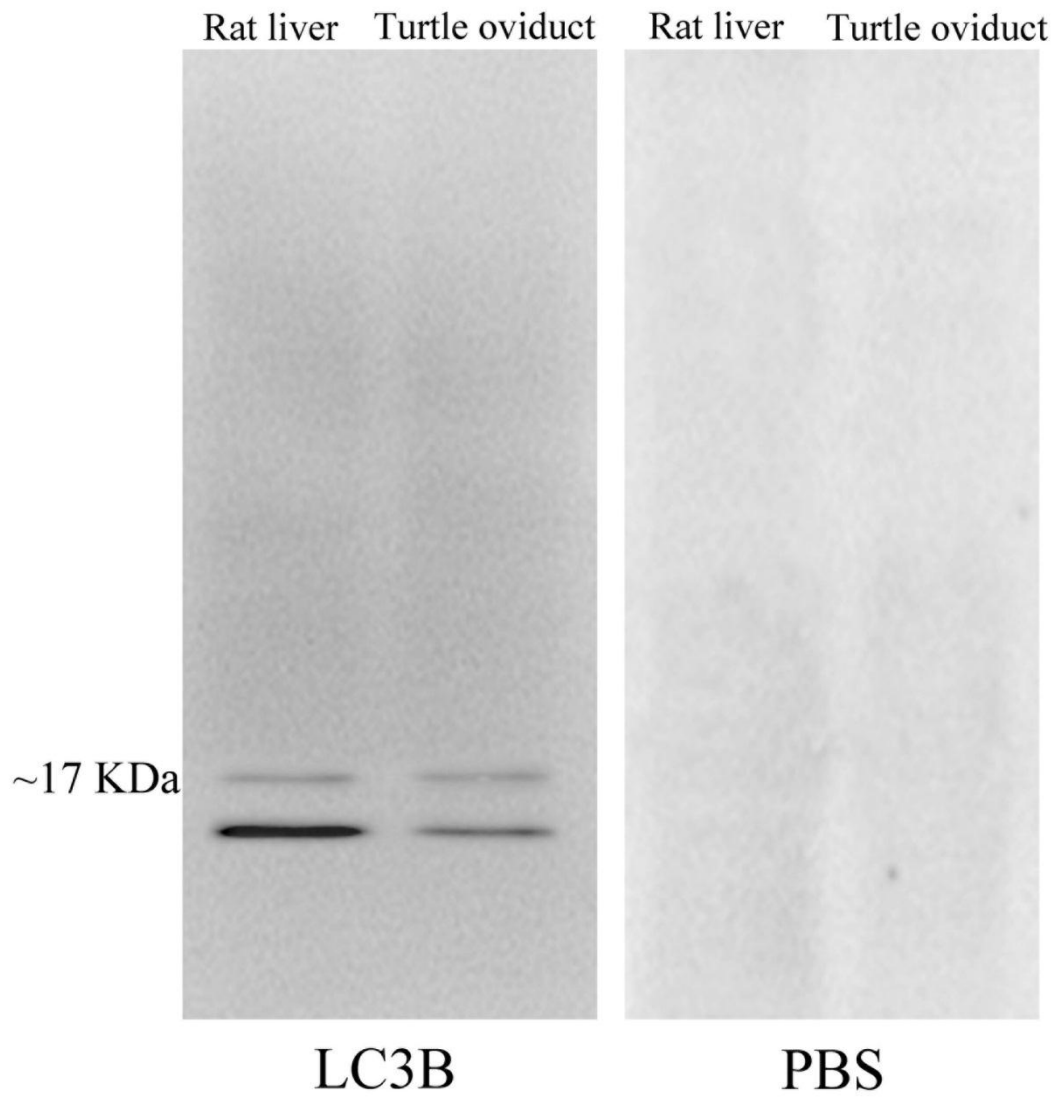
**Supplementary Table S1** Enriched GO terms of up-regulated DEGs in *P. sinensis*

**Supplementary Table S2** Enriched GO terms of down-regulated DEGs in *P. sinensis*

**Supplementary Table S3** Significantly enriched pathways of significantly DEGs in *P. sinensis*

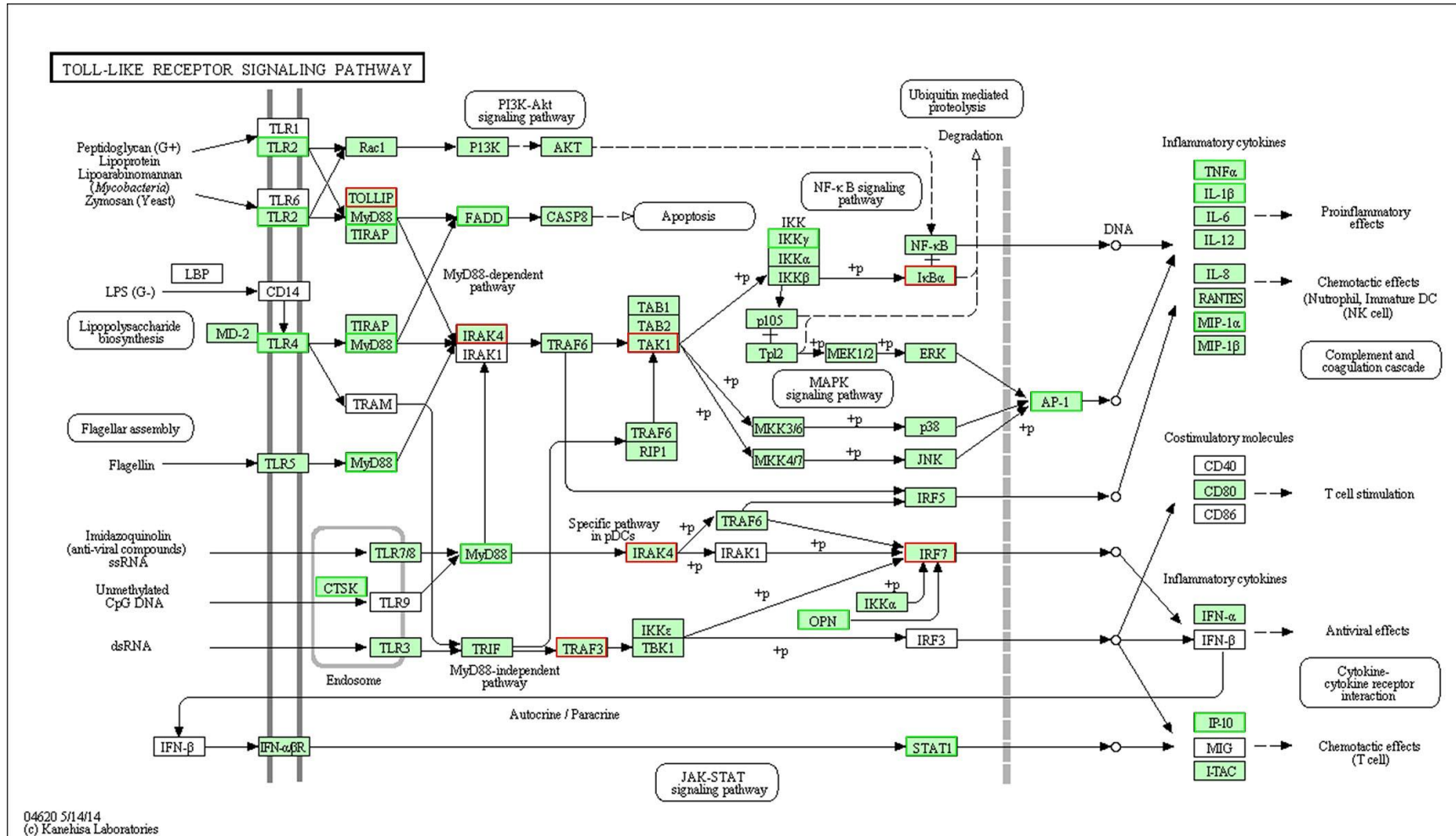
**Supplementary Table S4** Detailed information of DEGs related to sperm storage in *P. sinensis*

**Supplementary Table S5** Primers of DEGs for RT-qPCR analysis in *P. sinensis*

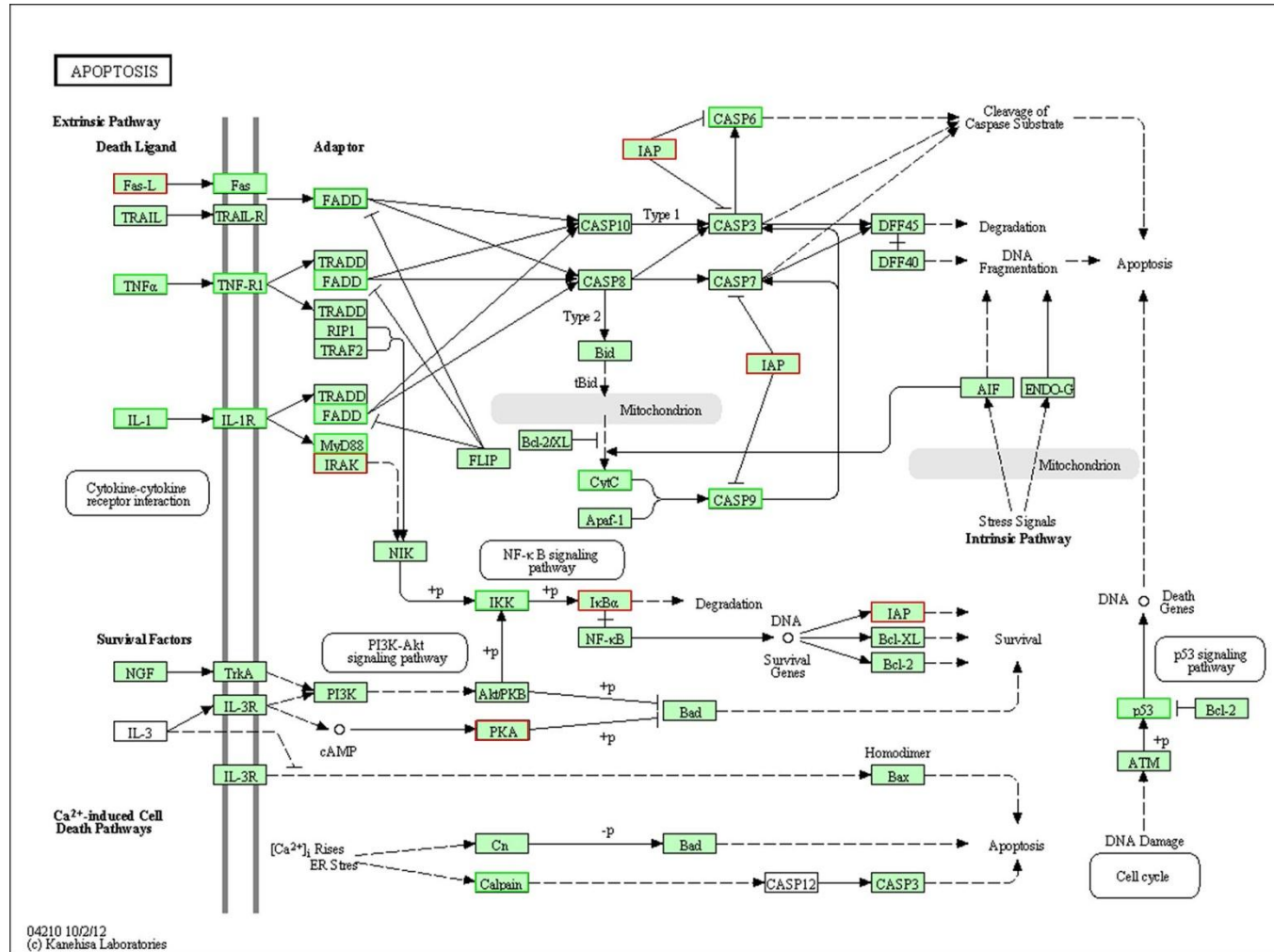


**Supplementary Fig. S1** Western blot analysis of LC3B in the *P. sinensis* oviduct and rat liver with the positive control. The negative controls were obtained by exchanging the primary antibody with 0.01 M PBS.

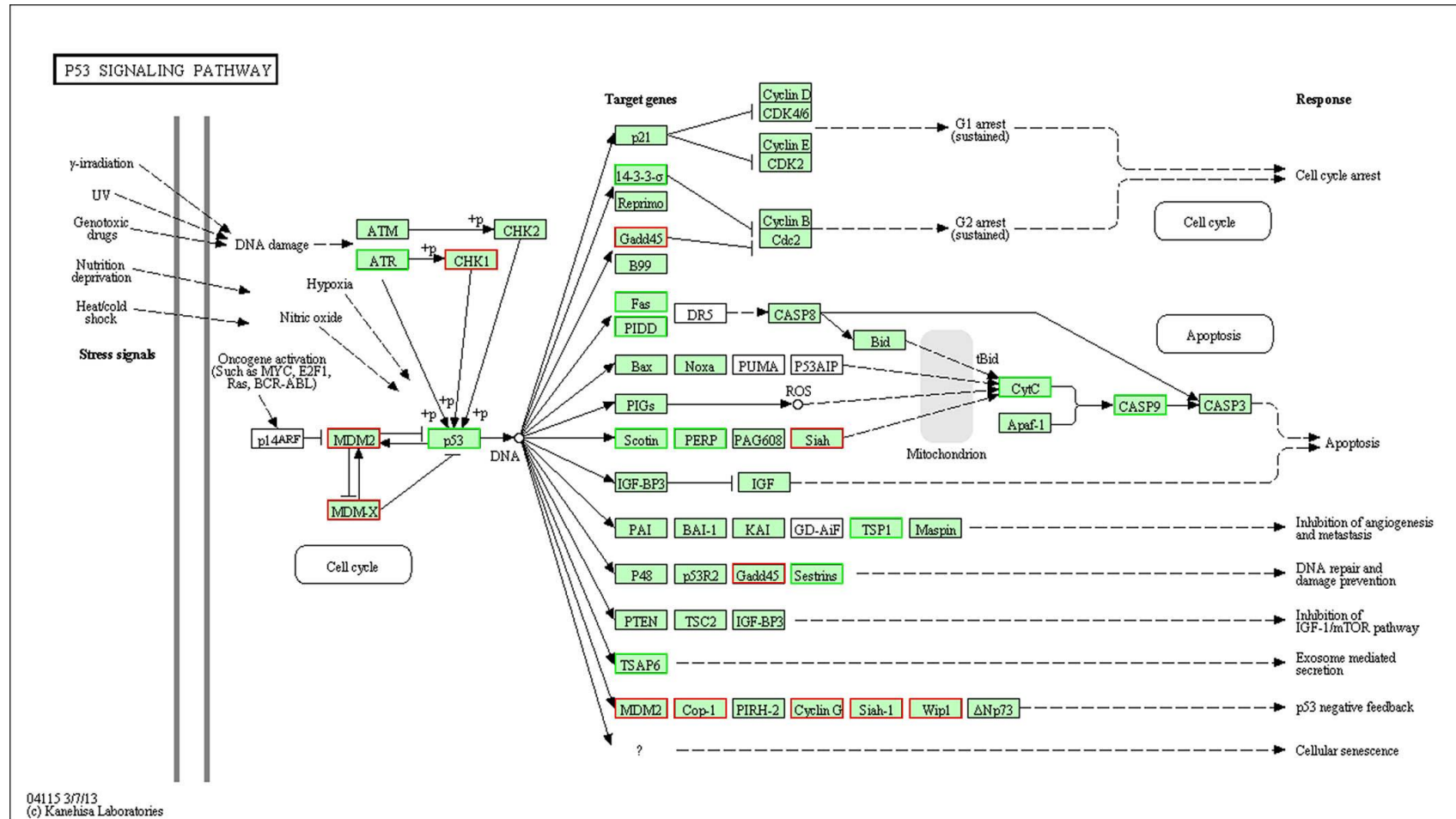
A



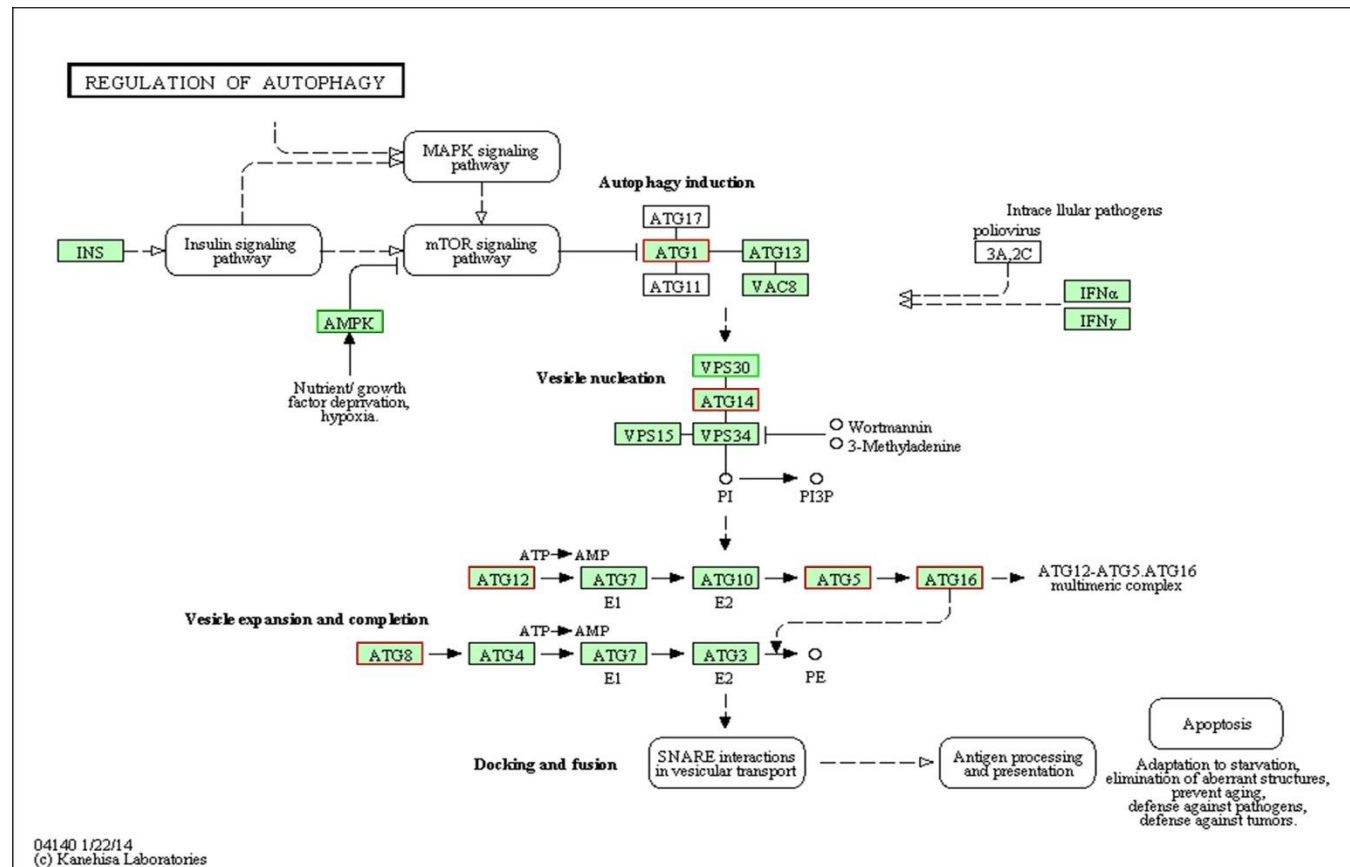
B



C



D



**Supplementary Fig. S2** The identified sperm storage-related DEGs involved in Toll-like receptor (TLR) signalling pathway (A), apoptosis pathway (B), p53 signalling pathway (C), and regulation of autophagy pathway (D). These pathways originate from Kyoto Encyclopedia of Genes and Genome (KEGG) database. The red and green colors indicate up- and down-regulated genes, respectively.