

**Drug-loadable Mesoporous Bioactive Glass Nanospheres:
Biodistribution, Clearance, BRL Cellular Location and Systemic
Risk Assessment via ^{45}Ca Labelling and Histological Analysis**

Baiyan Sui¹, Gaoren Zhong² and Jiao Sun^{1,*}

¹ Shanghai Biomaterials Research & Testing Center, Shanghai Key Laboratory of Stomatology, Ninth People's Hospital, Shanghai Jiaotong University School of Medicine, Shanghai 200023, China

² School of Pharmacy, Fudan University, Shanghai 201203, China

*Corresponding Author: E-mail: jiaosun59@126.com

Address: No. 427, Ju-men Road, Shanghai 200023, China.

Tel.:+86 21 63034903; Fax: +86 21 63011643.

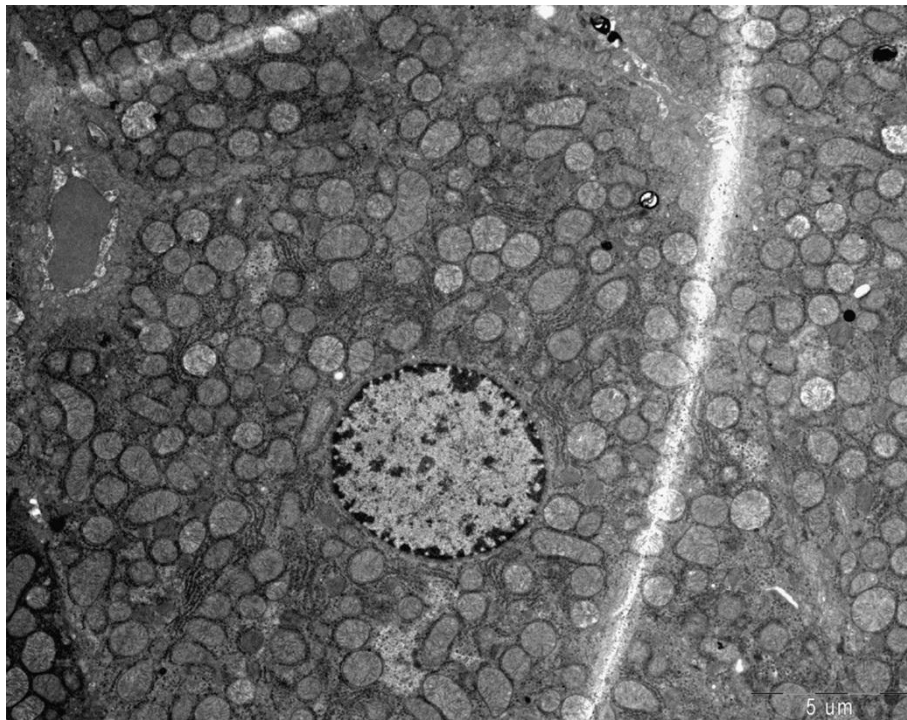


Figure.1 TEM images analysis of liver after injection with MBG nanospheres at 30 d.

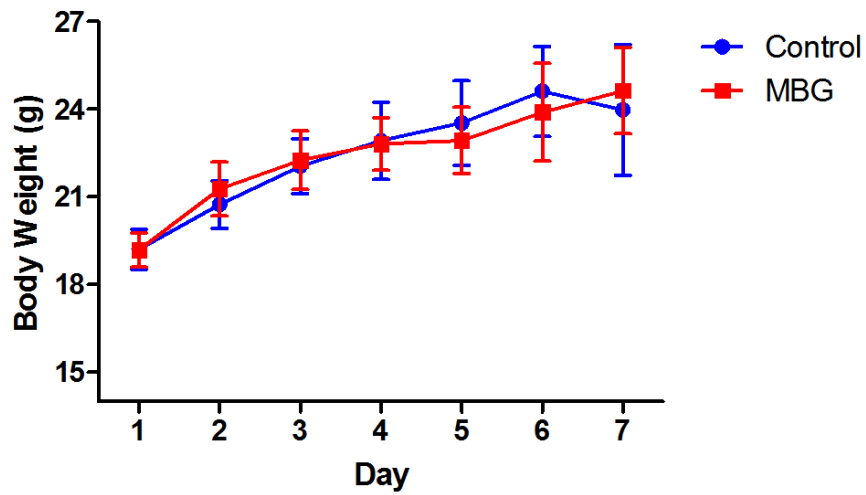


Figure.2 Average body weights of mice injected (i.v.) with MBG nanospheres once per day for 7 days. The results are presented as mean values \pm SD.

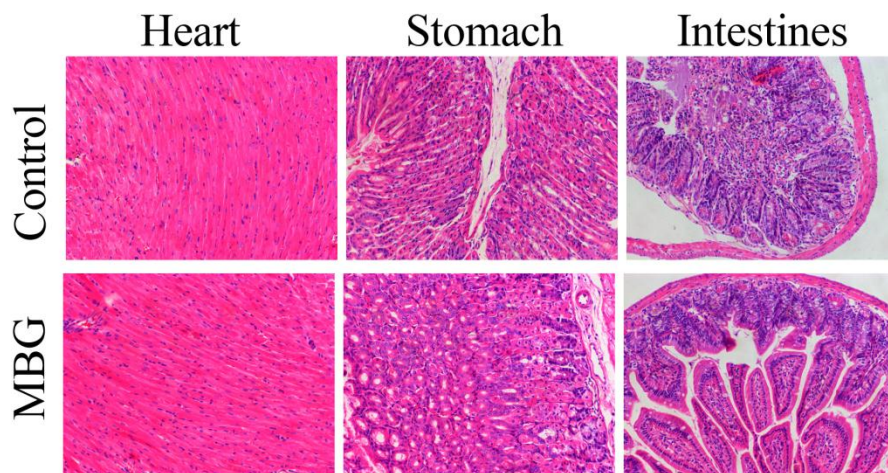


Figure.3 Sections from mice tissues after continuous injection with MBG nanospheres. All sections were stained with H&E and observed under a light microscope at $200\times$ magnification.