

Supplemental Materials

Molecular Biology of the Cell

Gershlick et al.

Supplemental Data

Supplementary Figure 1

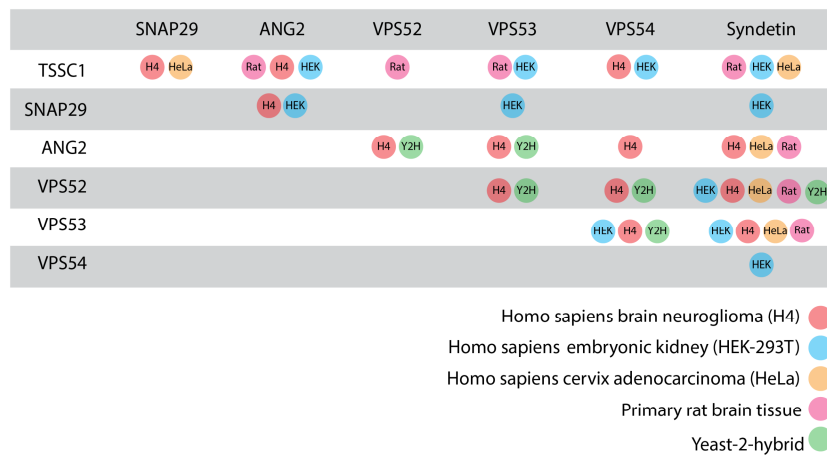


Figure S1. A map of experimentally demonstrated interactions for the GARP/EARP complex. Based on this manuscript, Schindler et al., 2015, and the BioGRID database.

Supplementary Figure 2

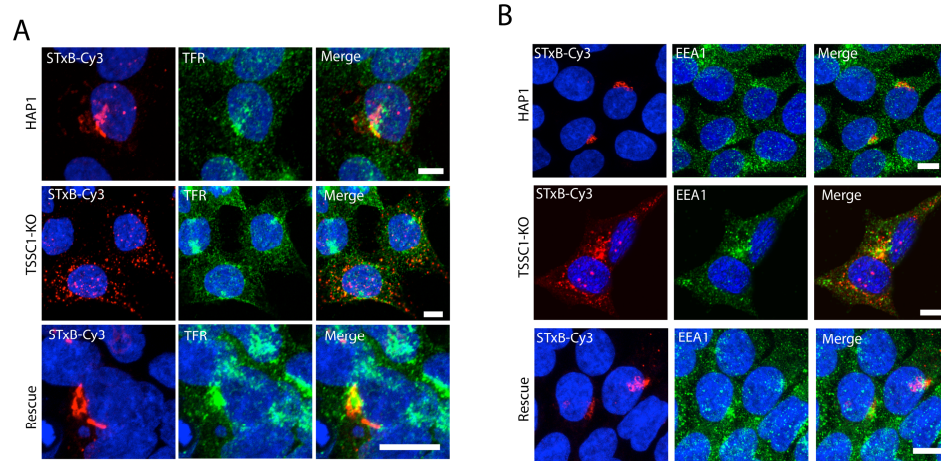


Figure S2. Live WT and TSSC1-KO HAP1 cells, and TSSC1-KO HAP1 cells rescued by stable expression of TSSC1-FOS, were incubated with Cy3-STxB for 1 hour, fixed, stained for the RE marker TfR (A), or the EE marker EEA1 (B), and examined by confocal fluorescence microscopy. Scale bar: 10 μ m

Table S1. Excel (.xls) file showing the results of the various mass spectrometry analyses performed in this study. The first sheet shows the tandem affinity purification of VPS51-FOS, VPS52-OSF, VPS53-OSF, and the negative control. The second sheet shows the results from the tandem affinity purification of Syndetin-OSF and TSSC1-FOS with the negative control. The third sheet shows the results from the VPS54-GFP GFP trap mass spectrometry experiment with the GFP negative control. All experiments were in the H4 cell line.