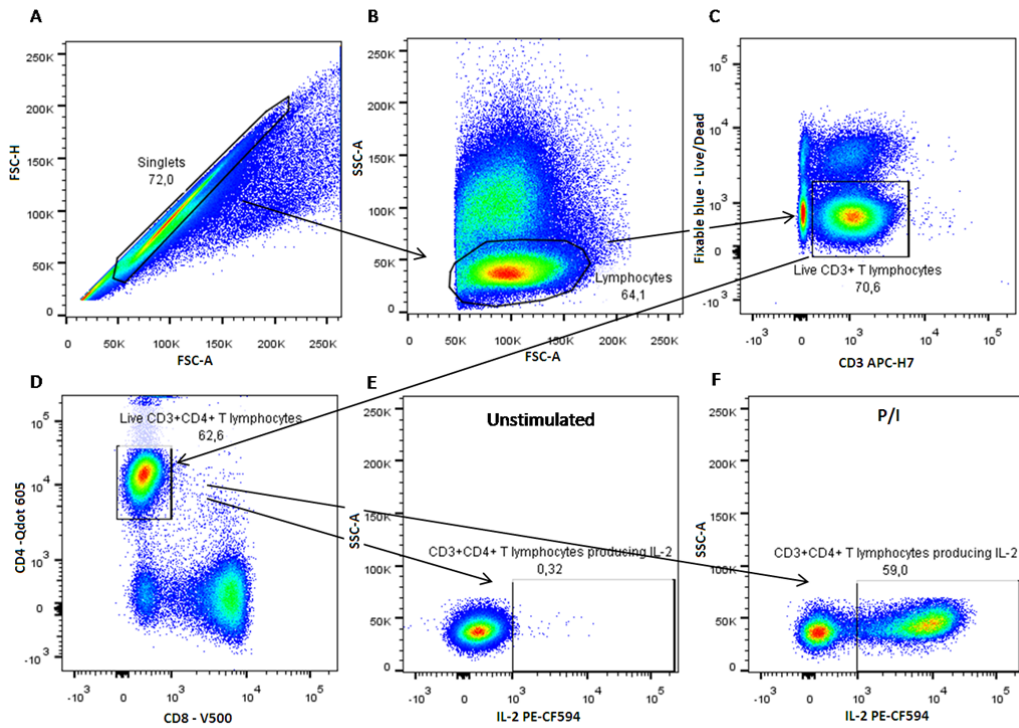


Supplemental Table 1: Antibody list for flow cytometry data**Cytokine frequency panel**

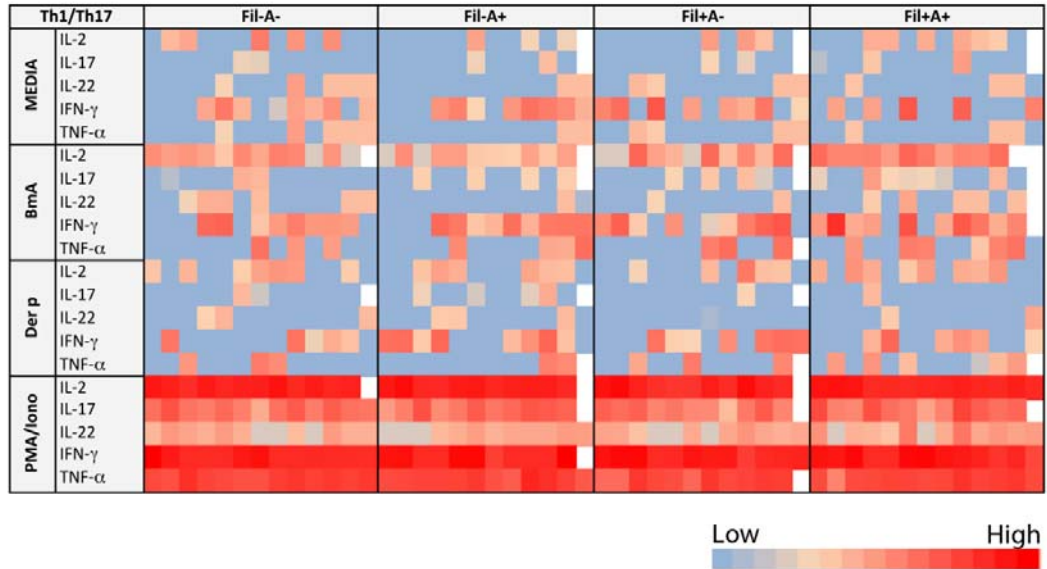
Name	Color	Clone	Company
Fixable blue Live/Dead	UV450	-	Molecular Probes
Anti-human CD3	APC-H7	SK7	BD Pharmingen
Anti-human CD4	Qdot-605	S3.5	Molecular Probes
Anti-human CD8	V500	RPA-T8	BD Horizon
Anti-human IL-4	FITC	MP4-25D2	BD Pharmingen
Anti-human IFN- γ	PE-Cy7	4S.B3	BD Pharmingen
Anti-human IL-10	eFluor [®] 450	JES3-9D7	eBioscience
Anti-human IL-17A	PerCP-Cy5.5	N49-653	BD Pharmingen
Anti-human IL-5	PE	TRFK5	BD Pharmingen
Anti-human IL-2	PE-CF594	5344.111	BD Pharmingen
Anti-human TNF- α	Alexa Fluor [®] 700	MAb11	BD Pharmingen

Surface markers panel

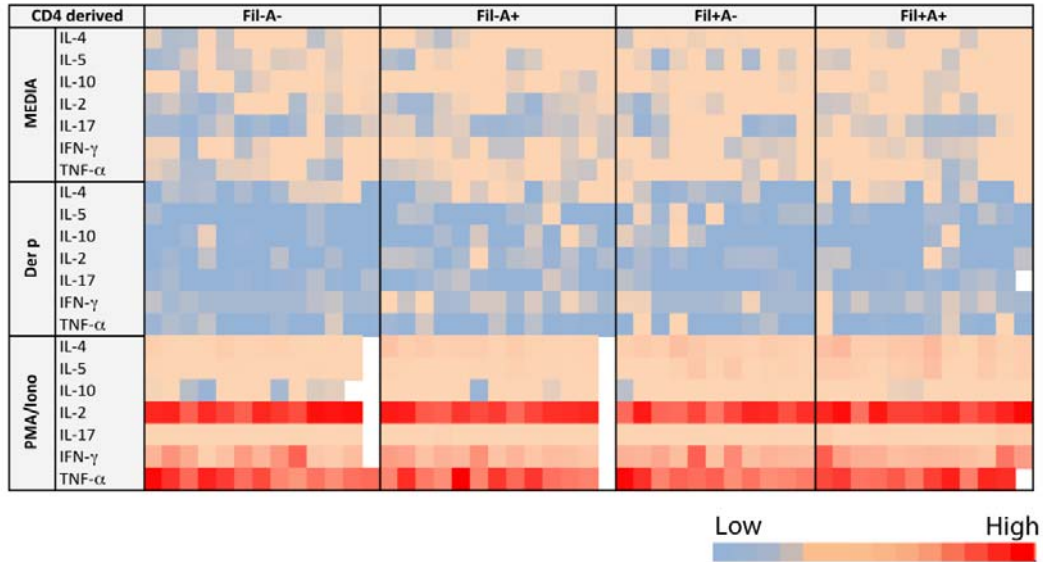
Fixable blue Live/Dead	UV450	-	Molecular Probes
Anti-human CD3	Alexa Fluor [®] 700	UCHT1	BD Pharmingen
Anti-human CD4	V500	RPA-T4	BD Horizon
Anti-human CD25	PE-Cy7	BC96	eBioscience



Supplemental Figure 1. Representative gating strategy for CD4⁺ T cells producing cytokines. Initial gating of single cells (A), followed by the lymphocytes based on forward- and side-scatter properties (B). Live T cells (Fixable blue⁻ and CD3⁺ T cells) (C). Cytokine-positive CD4⁺ T cells were gated as shown and the responding frequencies were determined based on unstimulated and stimulated conditions (D,E and F).



Supplemental Figure 2. Th1/Th17-associated cytokines driven by parasite antigens, allergens and mitogen in the filarial-infected individuals with or without coincident allergic sensitization. Heat map representing the range of reactivity (from low in light blue to high in dark red) of Th1- and Th17-associated cytokines (IL-2, IL-17, IL-22 and IFN- γ TNF- α) of patients from the 4 groups (in the columns) at the baseline (MEDIA) and stimulated by filarial antigen (BMA), Der p and P/I.



Supplemental Figure 3. Allergen and mitogen-specific CD4⁺ T-cells responsiveness in the filarial-infected individuals with or without coincident allergic sensitization.

Heat map representing the range of frequency (from low in light blue to high in dark red) of CD4⁺ T lymphocytes from the 4 groups (in the columns), producing IL-4, IL-5, IL-10, IL-2, IL-17A, IFN- γ and TNF- α , at baseline (MEDIA and following stimulation by Der p and P/I).