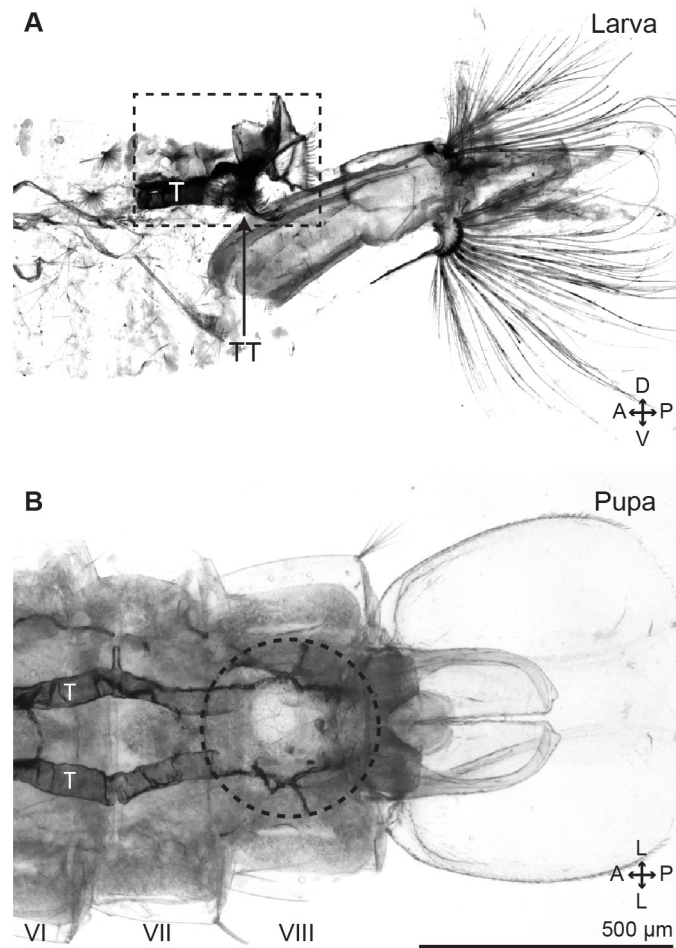


## Functional integration of the circulatory, immune, and respiratory systems in mosquito larvae: pathogen killing in the hemocyte-rich tracheal tufts

Garrett P. League and Julián F. Hillyer (julian.hillyer@vanderbilt.edu)

Department of Biological Sciences, Vanderbilt University, Nashville, TN, U.S.A.

*BMC Biology*, 2016



### Additional File 1: Figure S1. Tracheal tufts are shed in the 4<sup>th</sup> instar larval exuvium during pupation.

(A) Bright-field image of a lateral view of a 4<sup>th</sup> instar larval exuvium showing that the 8<sup>th</sup> abdominal segment trachea (black rectangle), including the tracheal trunks (T) and the tracheal tufts (TT), are shed during pupation. (B) Bright-field image of a dissected pupal dorsal abdomen, showing the dorsal longitudinal tracheal trunks (T) and the absence of the 8<sup>th</sup> abdominal segment tracheal tufts (circle). Directional arrows: A, anterior; P, posterior; D, dorsal; V, ventral; L, lateral.