

Supplementary data

Laminin-111 Peptides Conjugated to Fibrin Hydrogels Promote Formation of Lumen Containing Parotid Gland Cell Clusters

Kihoon Nam,[†] Joshua P. Jones,[‡] Pedro Lei,[§] Stelios T. Andreadis,^{§,||,⊥} and Olga J. Baker^{*,†}

[†]School of Dentistry, [‡]Department of Bioengineering, The University of Utah, Salt Lake City, Utah 84108, United States

[§]Department of Chemical and Biological Engineering, ^{||}Department of Biomedical Engineering, School of Engineering and Applied Sciences, [⊥]Center of Bioinformatics and Life Sciences, University at Buffalo, The State University of New York, Buffalo, New York 14260, United States

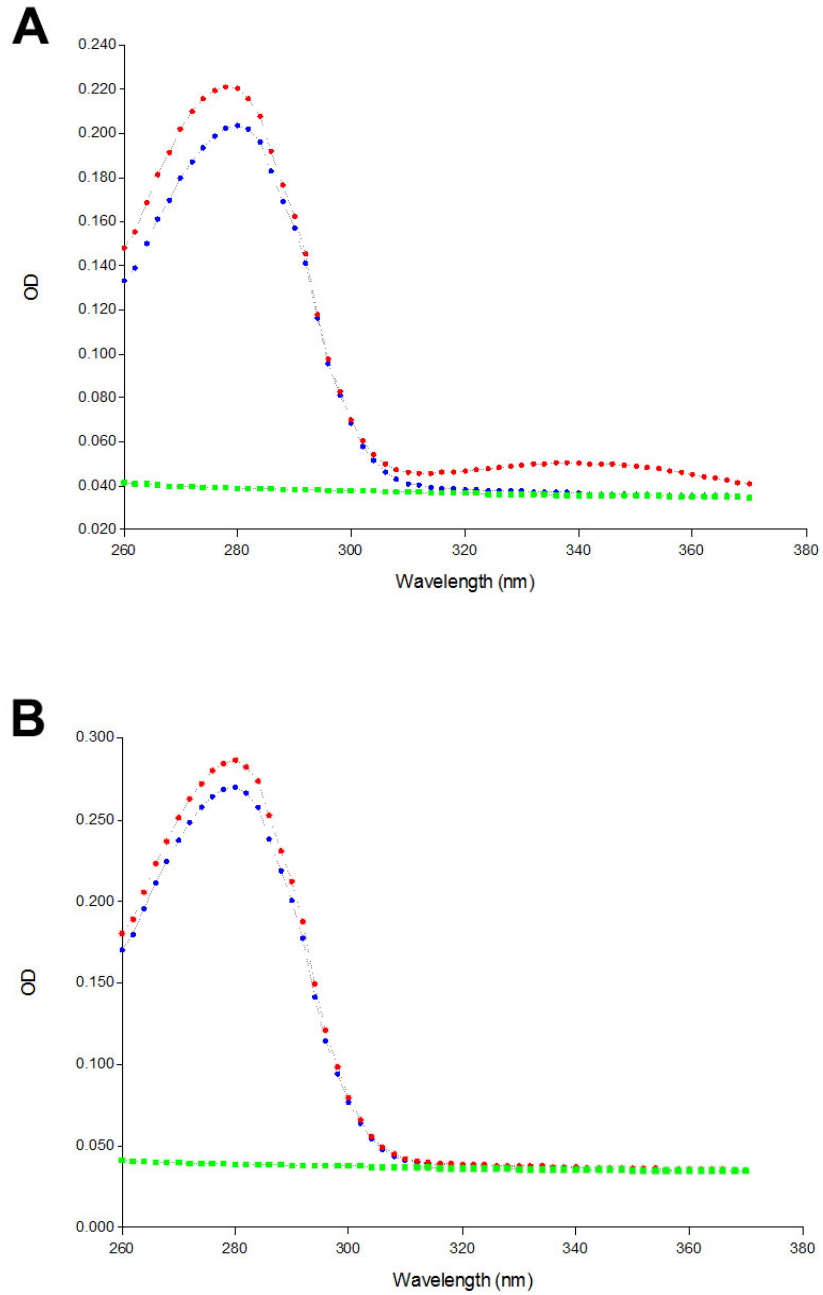


Figure S1. The UV-Vis absorption spectra of LC-SPDP activated fibrinogen (A) and YIGSR-conjugated fibrinogen (B) after incubation in the presence (red dots) or absence (blue dots) of DTT for 15 min. Green dots represent blank signals.

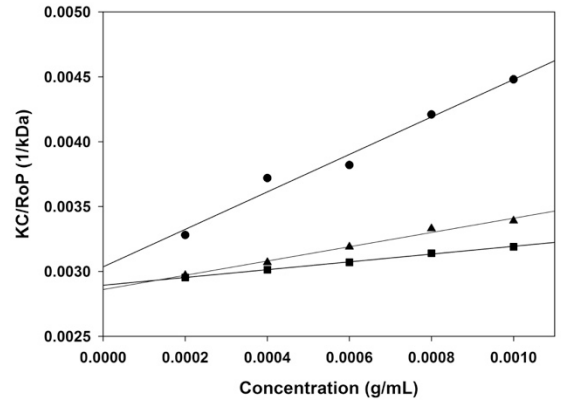


Figure S2. Debye plots for fibrinogen (●), YIGSR-conjugated fibrinogen (▲) and A99-conjugated fibrinogen (■).

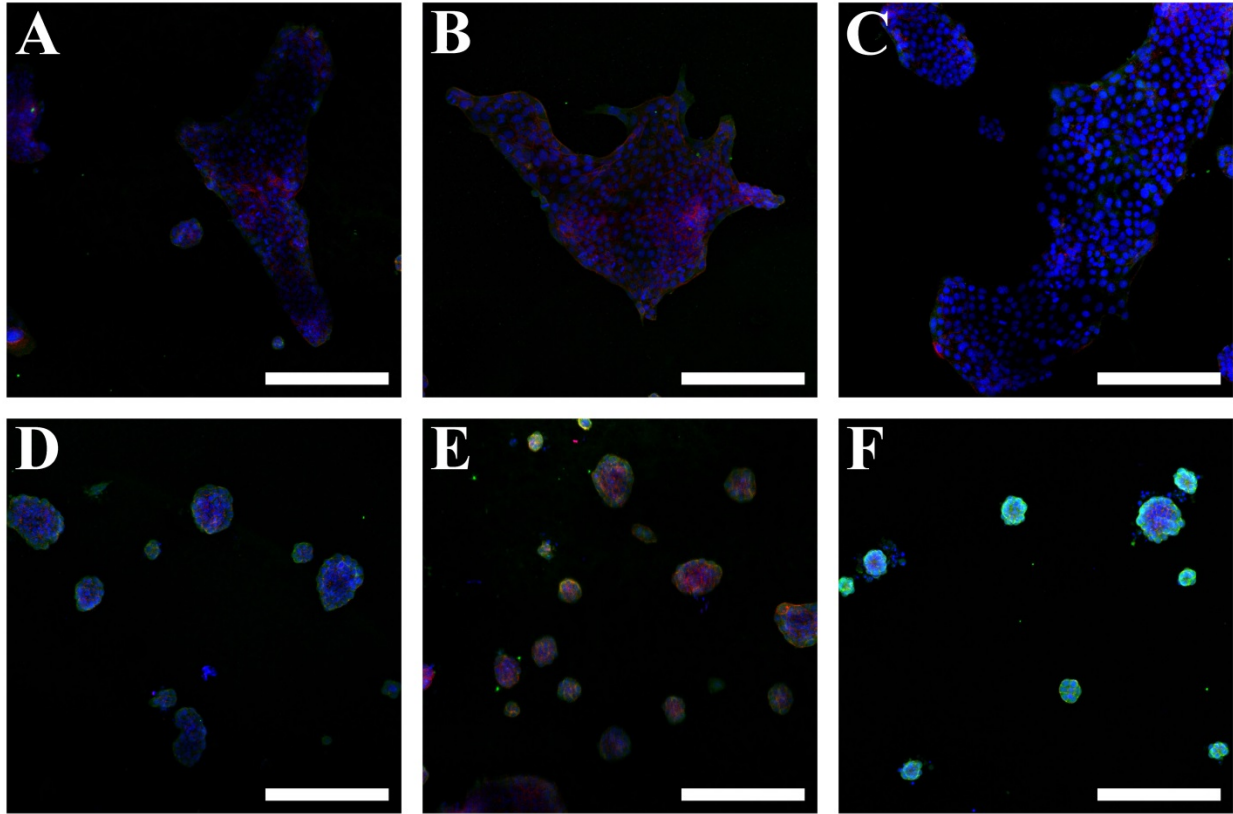


Figure S3. Maximum intensity projection of confocal images data at low magnification (10x). Confocal microscopy images show ZO-1 (green) as stained by Alexa Fluor 488-conjugated goat anti-rabbit secondary antibody, F-actin as stained by Alexa Fluor 568-conjugated phalloidin (red) and nuclei (blue) as stained by TO-PRO-3 iodide. Right images are merged images. Par-C10 cells plated on unmodified FH (A), SGIYR-conjugated FH (B), RAD-conjugated FH (C), YIGSR-conjugated FH (D), A99-conjugated FH (E) and a combination of YIGSR (50%)- and A99 (50%)-conjugated FH (F). Scale bars represent 200 μm .