

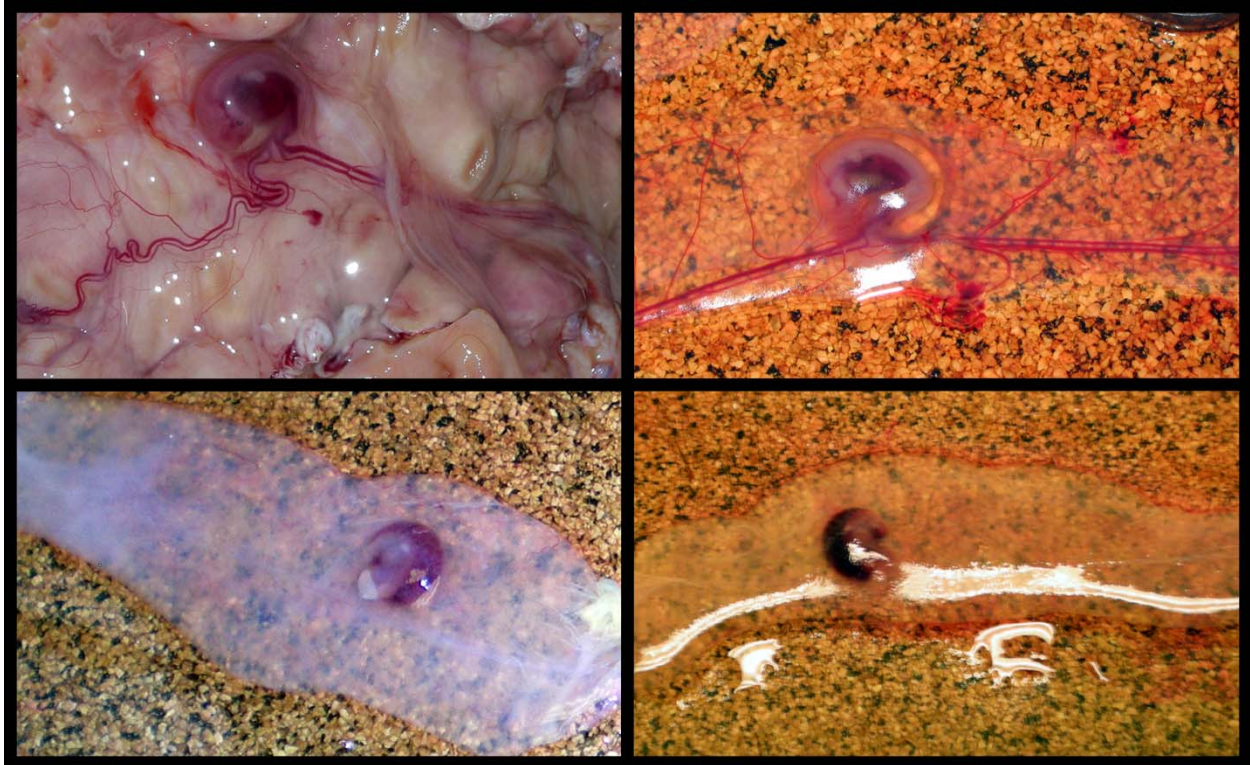
SUPPLEMENTAL TABLE S1. MHC typing data for cows and embryos.

Cow #	Cow MHC Type ^a	Bull or SCNT line	Embryo MHC Type ^a
Control Pregnancies			
B4021	AH020B-DH1801C/AH075A-DH2601A	AI-038	AH011A-DH0701A/AH075A-DH2601A
B4129	AH079A-DH1201C/AH106A-DH3601C	AI-038	AH011A-DH0701A/AH106A-DH3601C
B4004	AH002A-DH0201A/AH078A-DH1801C	AI-064	AH078A-DH1801C/AH088A-DH1002A
B4024	AH014B-DH3301A/AH093A-DH1601A	AI-064	AH002A-DH0201A/AH093A-DH1601A
B4109	AH011A-DH1601A/AH012D-DH1501A	AI-064	AH012D-DH1501A/AH088A-DH1002A
B4112 ^b	AH020B-DH1601A/AH104A-DH1101C	AI-064	AH002A-DH0201A/AH104A-DH1101C
B4121	AH002A-DH0201A/AH107A-DH3202A	AI-064	AH002A-DH0201A/AH002A-DH0201A
B4108	AH020B-DH1601A/AH104A-DH1501A	AI-141	AH020B-DH1601A/AH105A-DH1801B
MHC-I Homozygous Compatible SCNT Pregnancies			
B4425	AH010A-DH3201A/AH012A-DH1501A	B4150	AH012A-DH1501A/AH012A-DH1501A
B4002	AH012A-DH0201A/AH????-DH3701A	B4170	AH012A-DH1501A/AH012A-DH1501A
B4139	AH012A-DH1501A/AH074A-DH0901A	B4170	AH012A-DH1501A/AH012A-DH1501A
B4037	AH011A-DH0101A/AH100A-DH0201A	B4276	AH011A-DH0101A/AH011A-DH0101A
B4115	AH011A-DH1101K/AH075B-DH3201A	B4276	AH011A-DH0101A/AH011A-DH0101A
B4428	AH002A-DH0201A/AH011A-DH0101A	B4276	AH011A-DH0101A/AH011A-DH0101A
B4120 ^b	AH011A-DH0101A/AH087A-DH0301A	B4309	AH011A-DH0101A/AH011A-DH0101A
B4363	AH011A-DH0101A/AH031A-DH1701A	B4309	AH011A-DH0101A/AH011A-DH0101A
B4423	AH002A-DH1001A/AH011A-DH0101A	B4309	AH011A-DH0101A/AH011A-DH0101A
MHC-I Homozygous Incompatible SCNT Pregnancies			
B4013	AH073A-DH0101A/AH100A-DH0201A	B4150	AH012A-DH1501A/AH012A-DH1501A
B4020	AH003A-DH0201A/AH015A-DH1101A	B4150	AH012A-DH1501A/AH012A-DH1501A
B4125 ^b	AH019B-DH0701A/AH077A-DH2707B	B4150	AH012A-DH1501A/AH012A-DH1501A
B4022	AH003A-DH0201A/AH088A-DH1002A	B4170	AH012A-DH1501A/AH012A-DH1501A
B4029	AH002A-DH0201A/AH011A-DH0101A	B4170	AH012A-DH1501A/AH012A-DH1501A
B3992	AH020B-DH3202A/AH063B-DH3201A	B4309	AH011A-DH0101A/AH011A-DH0101A
B4010	AH002A-DH0201A/AH020B-DH1601A	B4309	AH011A-DH0101A/AH011A-DH0101A
B4119	AH075A-DH2601A/AH104A-DH1501A	B4309	AH011A-DH0101A/AH011A-DH0101A
MHC-I Heterozygous Incompatible SCNT Pregnancies			
B3986 ^b	AH012A-DH0201A/AH075A-DH3201A	B4164	AH019B-DH1001A/AH110A-DH2001A
B3989 ^b	AH019A-DH0801A/AH074A-DH3601A	B4164	AH019B-DH1001A/AH110A-DH2001A
B3997 ^b	AH089A-DH3201A/AH103A-DH1201A	B4164	AH019B-DH1001A/AH110A-DH2001A
B4027 ^b	AH002A-DH0201A/AH020B-DH1801C	B4164	AH019B-DH1001A/AH110A-DH2001A
B4033 ^b	AH015A-DH1101A/AH065A-DH1801A	B4164	AH019B-DH1001A/AH110A-DH2001A

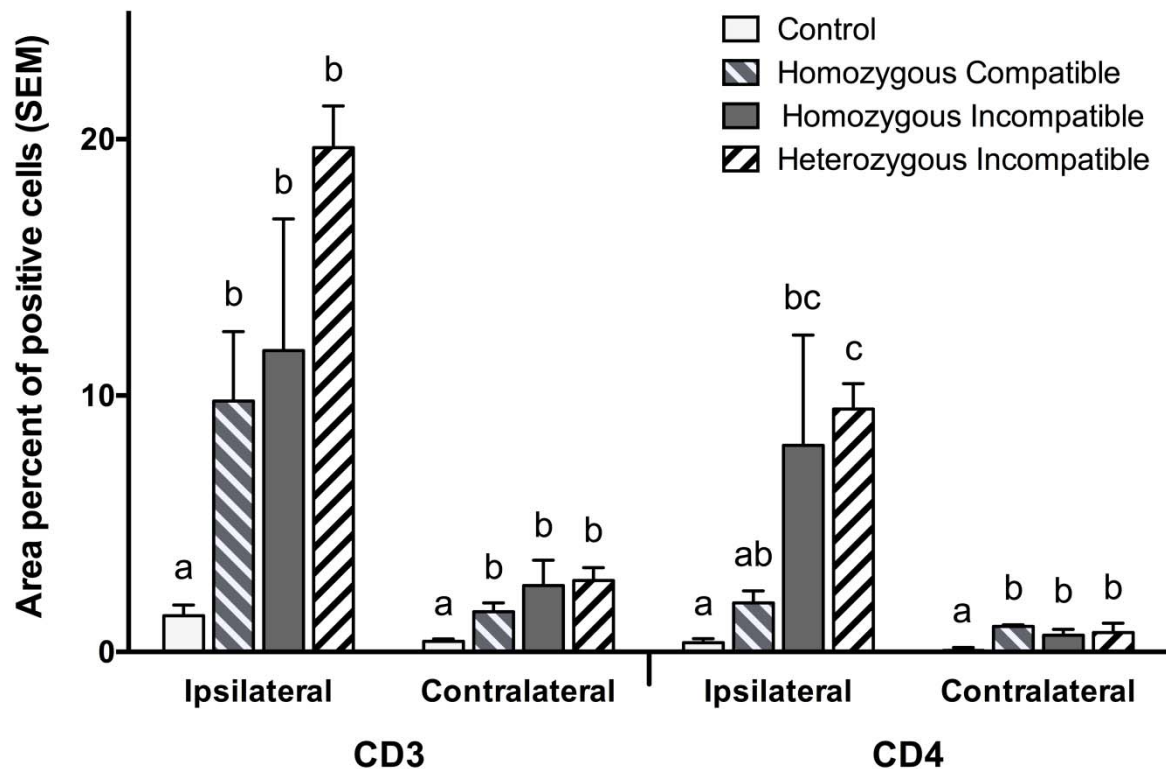
^aEach MHC haplotype carried by an animal is comprised of a MHC-I haplotype (AH) and a MHC-II haplotype (DH). The nomenclature is similar to that used in previous publications [14].

^bEmbryo was dead at time of sample collection.

RUTIGLIANO ET AL., SUPPLEMENTAL FIGURES



SUPPLEMENTAL FIG. S1. Viable and non-viable Day 34 or 35 conceptuses. The upper two pictures are of healthy AI control conceptus and the bottom two pictures are of non-viable MHC-I heterozygous incompatible conceptuses. All viable conceptuses had blood filled placental vasculature that was readily visualized. The non-viable conceptuses were hemorrhagic and had placental vaculature that was hard to identify grossly because of the lack of circulating red blood cells.



SUPPLEMENTAL FIG. S2. Percent area of dispersed CD3⁺ and CD4⁺ T cells in the ipsilateral and contralateral endometrium of control (n=8), MHC-I homozygous compatible SCNT (n=9), MHC-I homozygous incompatible SCNT (n=8) and MHC-I heterozygous incompatible SCNT (n=5) pregnancies at day 35 ±1 of pregnancy. Age matched control pregnancies were established by AI. Groups with different superscripts were significantly different ($P < 0.05$).