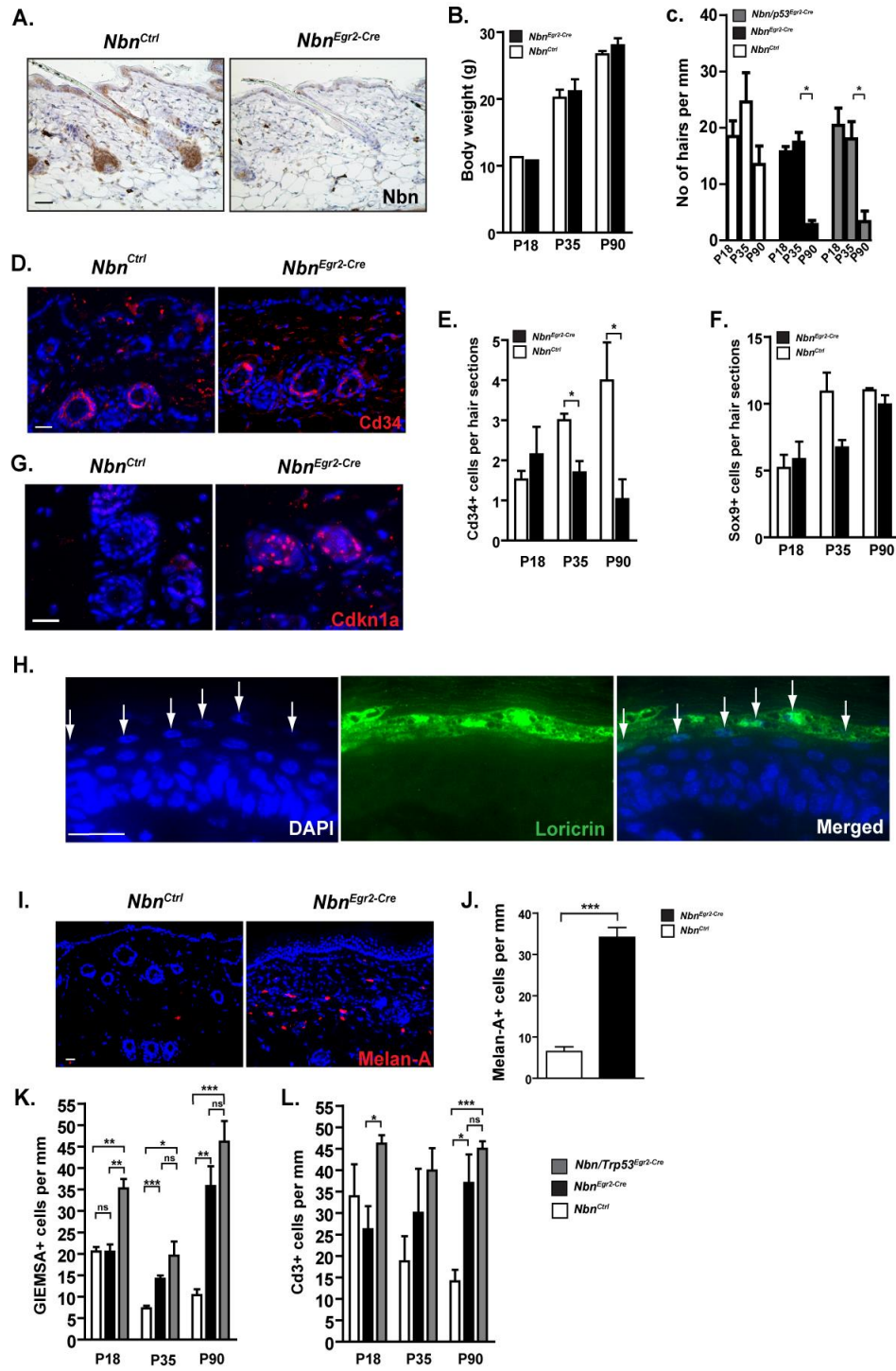
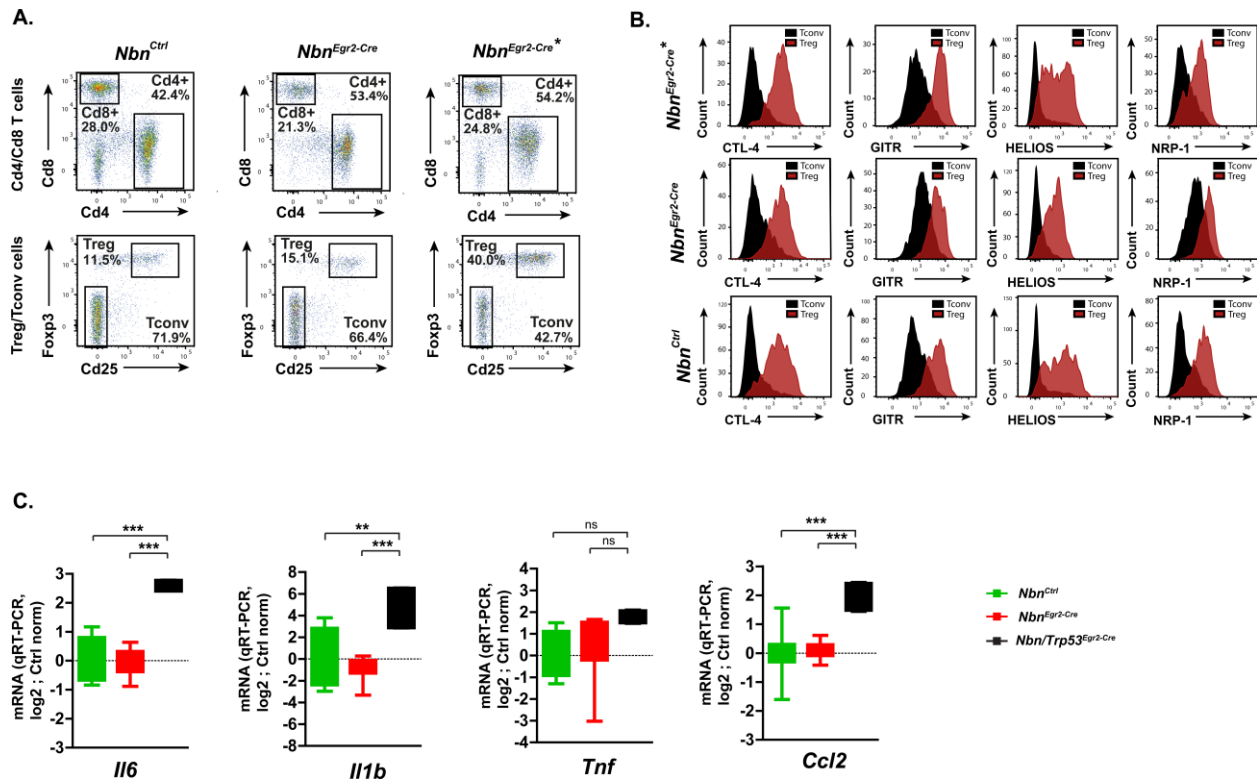


Epidermal *Nbn* deletion causes premature hair loss and a phenotype resembling psoriasiform dermatitis

Supplementary Material



Supplementary Figure 1: (A) Nbn Immunohistochemistry shows Nbn expression in HF bulk and keratinocytes at P18. Remarks the dramatic reduction of Nbn expression in *Nbn^{Egr2-Cre}* skins. (B) Body weight of *Nbn^{Ctrl}* and *Nbn^{Egr2-Cre}* mice at P18, P35 and P90. No obvious weight differences were observed. *Nbn^{Ctrl}*: P18 (N=1), P35 (N=5), P90 (N=3). *Nbn^{Egr2-Cre}*: P18 (N=1), P35 (N=2), P90 (N=5). (C) Quantification of HFs in P18, P35 and P90 *Nbn^{Egr2-Cre}* skins. The HFs were count in section of skin and measure per skin length (mm). At P18, *Nbn^{Ctrl}* (N=9), *Nbn^{Egr2-Cre}* (N=6), *Nbn/Trp53^{Egr2-Cre}* (N=4); at P35 *Nbn^{Ctrl}* (N=7), *Nbn^{Egr2-Cre}* (N=5), *Nbn/Trp53^{Egr2-Cre}* (N=3); at P90 *Nbn^{Ctrl}* (N=6), *Nbn^{Egr2-Cre}* (N=7), *Nbn/Trp53^{Egr2-Cre}* (N=4). ***: p=0.0002. (D) Representative Cd34 immunostaining in P18 *Nbn^{Ctrl}* and *Nbn^{Egr2-Cre}* skins. Scale bar 20 μ m. (E) Quantification of Cd34+ cells in hair sections. A significant difference was observed between *Nbn^{Ctrl}* and *Nbn^{Egr2-Cre}* HFs as early as P35. *Nbn^{Ctrl}* at P18 (N=2), at P35 (N=2), at P90 (N=3). *Nbn^{Egr2-Cre}* at P18 (N=3), at P35 (N=2), at P90 (N=3). * p < 0.05. (F) Quantification of Sox9+ cells in hair sections. *Nbn^{Ctrl}* at P18 (N=2), at P35 (N=3), at P90 (N=3). *Nbn^{Egr2-Cre}* at P18 (N=3), at P35 (N=3), at P90 (N=3). No significant difference was observed between *Nbn^{Ctrl}* and *Nbn^{Egr2-Cre}* HFs. (G) Cdkn1a (p21^{Cip1/Waf1}) positive immunostaining in P18 *Nbn^{Egr2-Cre}* HF sections. (H) Loricrin staining of P90 *Nbn^{Egr2-Cre}* indicating the retention of nucleus in Loricrin-positive cells. Scale bar 20 μ m. (I) Representative melanocytes immunostaining using Melan-A marker. Scale bar 20 μ m. (J) Quantification of Melan-A positive (Melan-A+) cells per mm of skin length in *Nbn^{Ctrl}* (N=4) and *Nbn^{Egr2-Cre}* (N=4). A significant increase of the number of melanocytes was observed in *Nbn^{Egr2-Cre}* skins. *** : p<0.001. Quantification of GIEMSA+ (K) and Cd3+ (L) cells per surface skin mm in *Nbn^{Ctrl}*, *Nbn^{Egr2-Cre}* and *Nbn/Trp53^{Egr2-Cre}* skins. At P18, *Nbn^{Ctrl}* (N=3), *Nbn^{Egr2-Cre}* (N=4), *Nbn/Trp53^{Egr2-Cre}* (N=3); at P35 *Nbn^{Ctrl}* (N=4), *Nbn^{Egr2-Cre}* (N=4), *Nbn/Trp53^{Egr2-Cre}* (N=3); at P90 *Nbn^{Ctrl}* (N=5), *Nbn^{Egr2-Cre}* (N=5), *Nbn/Trp53^{Egr2-Cre}* (N=3). *: p<0.05, **: p<0.01, ***: p<0.001, ns: no significant.



Supplementary Figure 2: (A) Immunophenotyping of *Nbn^{Egr2-Cre}* mouse. Cd4 positive (Cd4+) and Cd8 positive (Cd8+), Fopx3 positive (Fopx3+; regulatory T cells) T cell population in 5 months old *Nbn^{Ctrl}* and *Nbn^{Egr2-Cre}* mice (* indicates that this mouse had a splenomegaly and severe lymphadenopathy). The number written below the indicated box are the percentage of the respective subpopulation of T cells. **(B)** Expression pattern of indicated marker are shown for regulatory T cells (Tregs; defined as Cd4+Fopx3+Cd25+) and conventional T cells (Tconv). **(C)** Persistence of inflammatory response indicated by *Il6*, *Il1b*, *Tnf*, *Ccl2* expression in *Nbn/Trp53^{Egr2-Cre}* at P90. *Nbn^{Ctrl}* (N=4), *Nbn^{Egr2-Cre}* (N=4), *Nbn/Trp53^{Egr2-Cre}* (N=2).