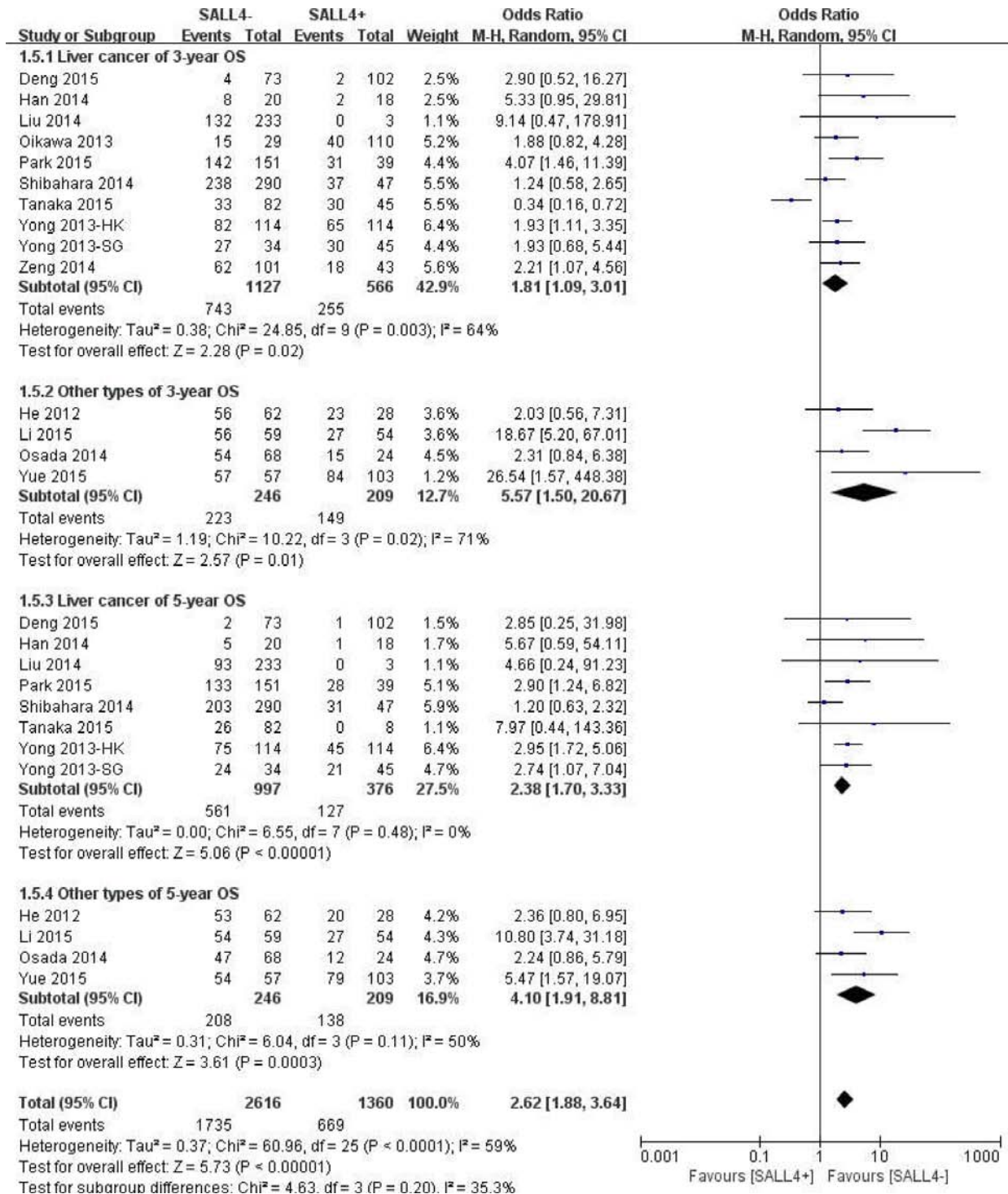
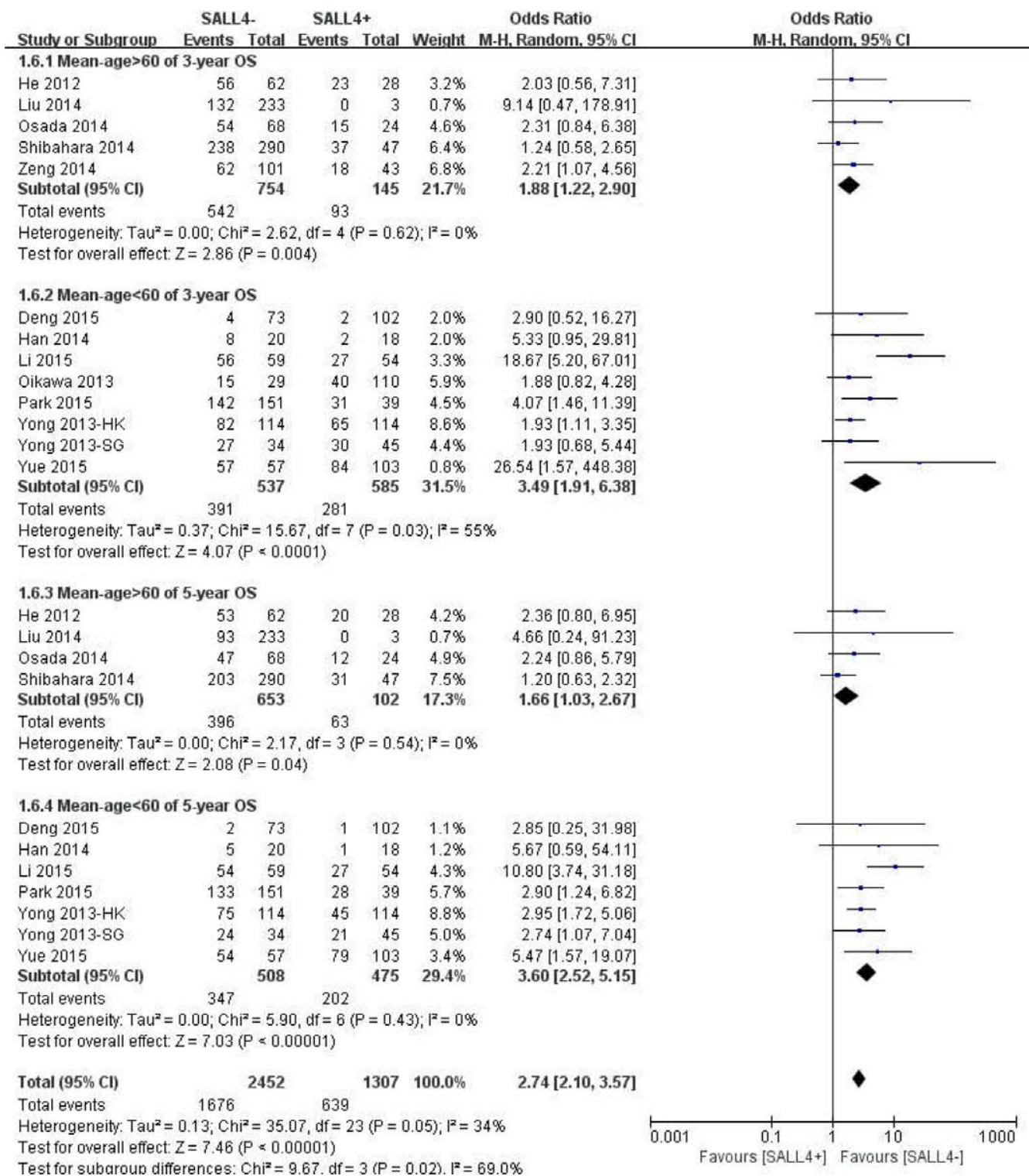


Oncogenic protein SALL4 and ZNF217 as prognostic indicators in solid cancers: a meta-analysis of individual studies

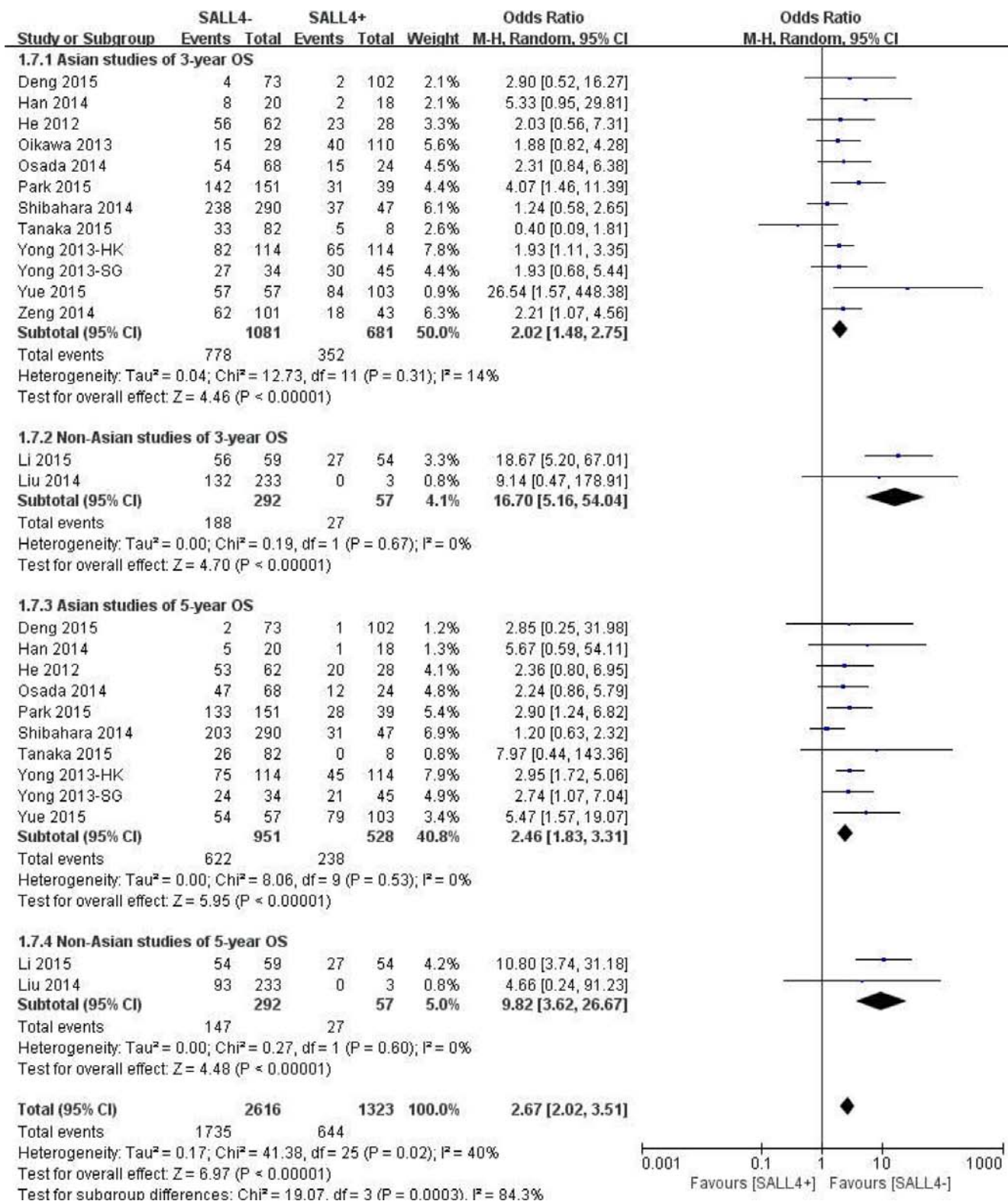
Supplementary Materials



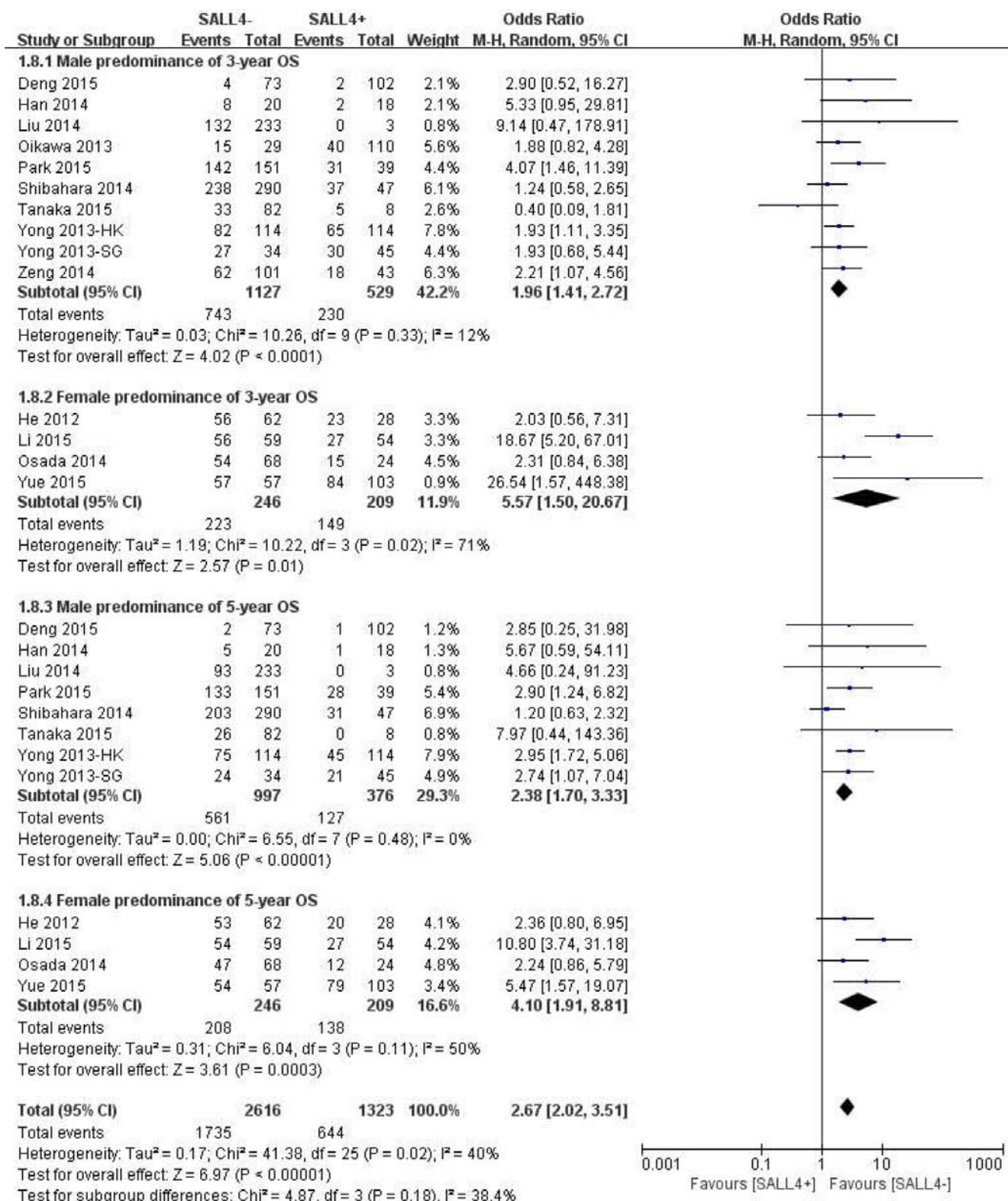
Supplementary Figure S1: The correlation between SALL4 expression and prognosis based on different cancer types.



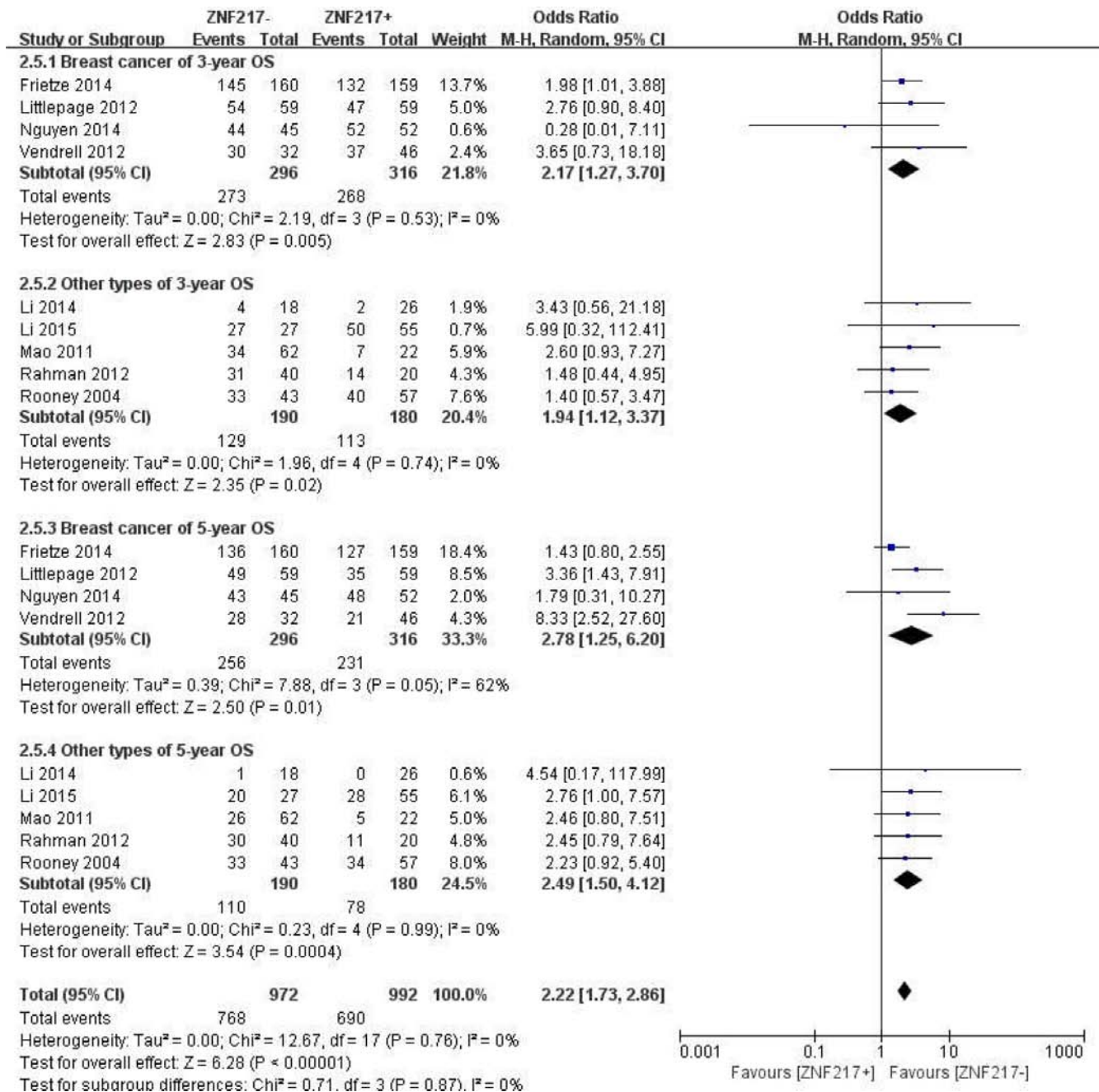
Supplementary Figure S2: The correlation between SALL4 expression and prognosis based on different mean-age.



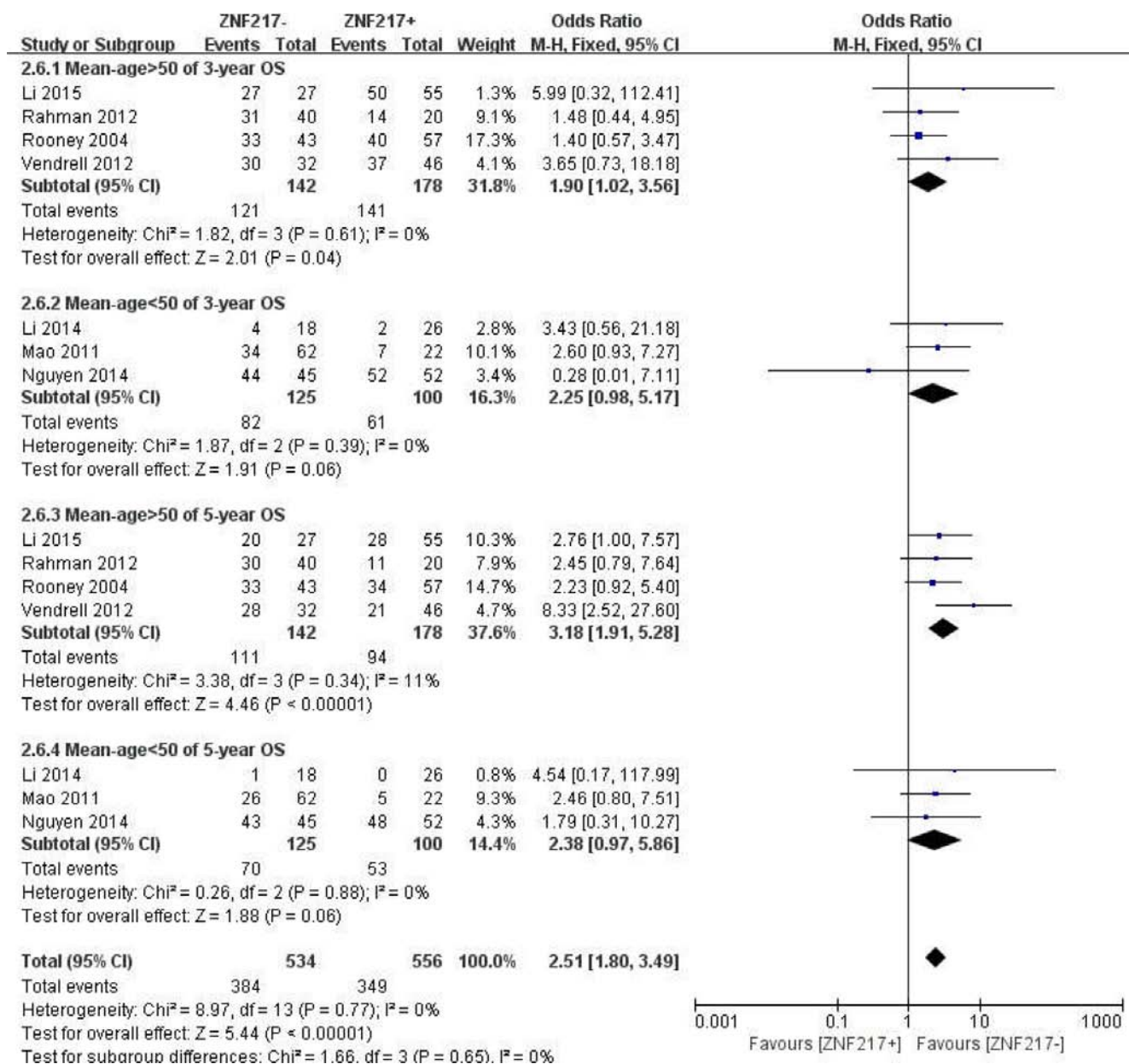
Supplementary Figure S3: The correlation between SALL4 expression and prognosis based on different source regions.



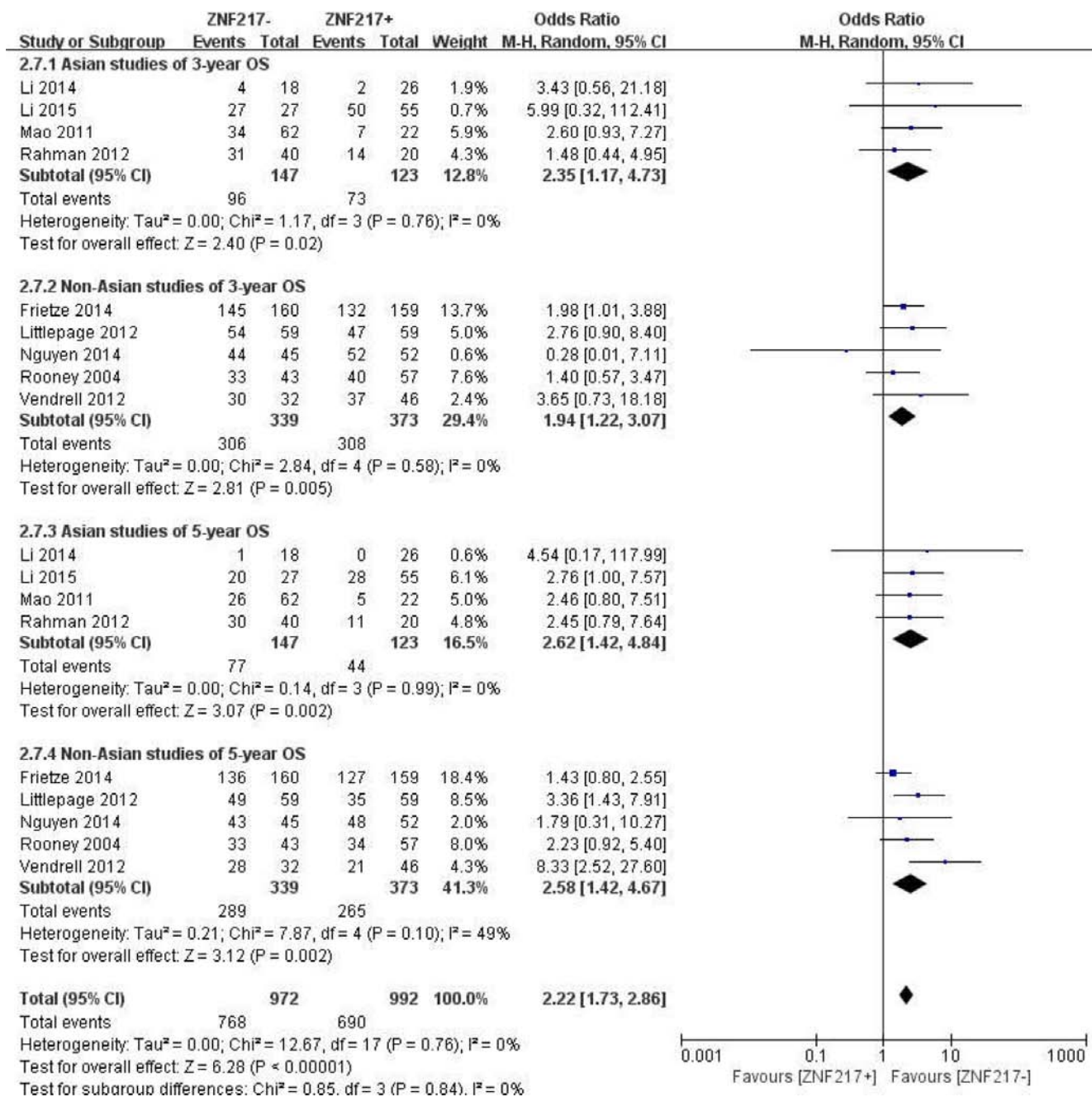
Supplementary Figure S4: The correlation between SALL4 expression and prognosis based on different sex predominance.



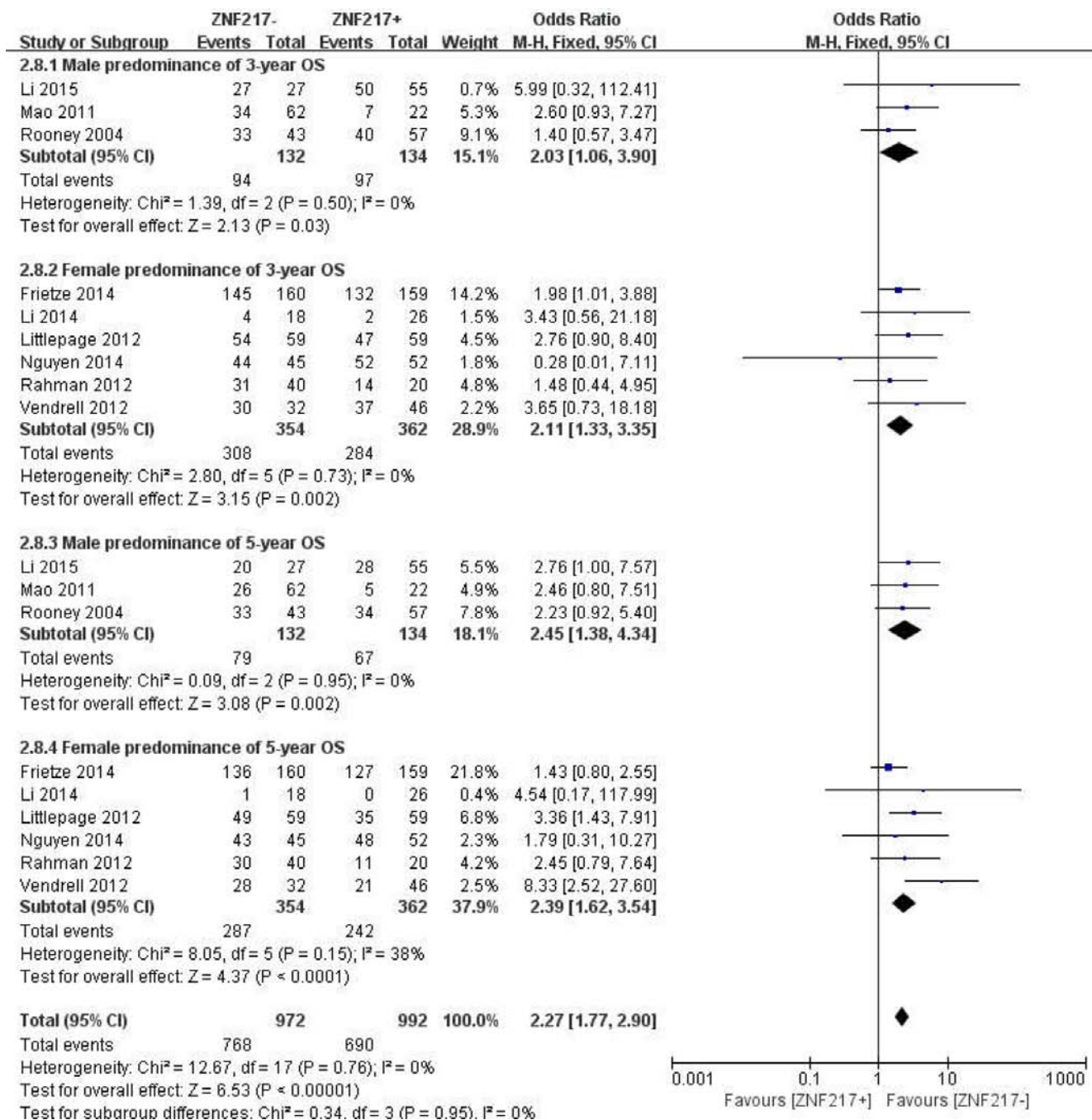
Supplementary Figure S5: The correlation between ZNF217 expression and prognosis based on different cancer types.



Supplementary Figure S6: The correlation between ZNF217 expression and prognosis based on different mean-age.



Supplementary Figure S7: The correlation between ZNF217 expression and prognosis based on different source regions.



Supplementary Figure S8: The correlation between ZNF217 expression and prognosis based on different sex predominance.