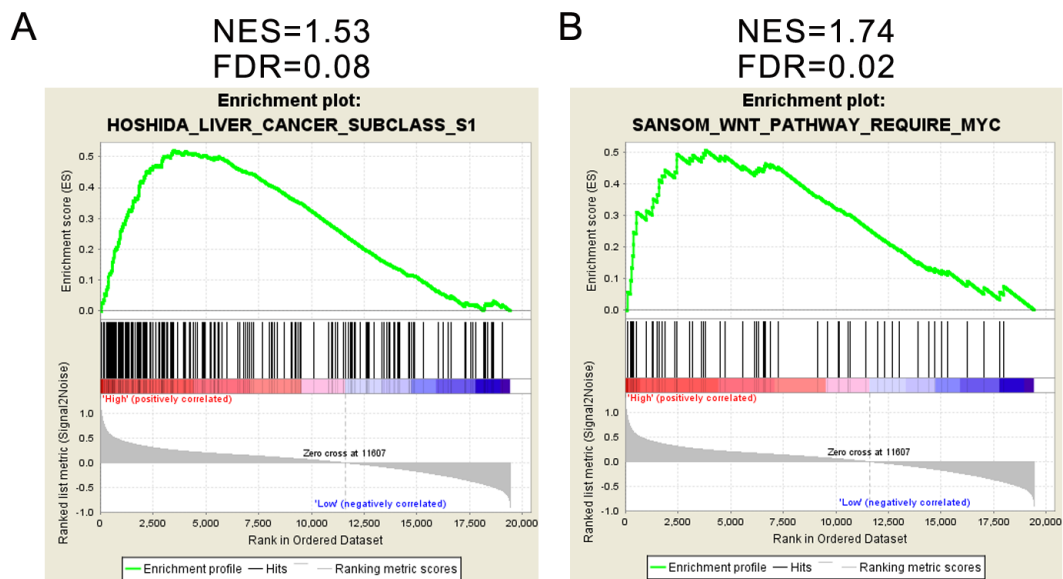


SUPPLEMENTARY FIGURE AND TABLES



Genes from 'subtype S1' signature of hepatocellular carcinoma (HCC): aberrant activation of the WNT signaling pathway.

Wnt target genes up-regulated after Cre-lox knockout of APC in the small intestine that require functional MYC

Supplementary Figure S1: The expression of KIF23 was tightly associated with wnt pathway activity. GSEA was applied to CGGA microarray dataset with two wnt pathway activity associated with gene sets.

Supplementary Table S1: KIF23 correlated genes.

See Supplementary File 1

Supplementary Table S2: Cell cycle associated genes of KIF23 correlated genes.

See Supplementary File 2