

1 **Biochemical characterization and genome sequence analysis of Megasphaera sp.**  
2 **strain DISK18 from healthy individual dental plaque revealed its commensal lifestyle**

3 Nayudu Nallabelli <sup>1\*</sup>, Prashant Patil<sup>1\*</sup>, Vijay Kumar Pal<sup>1</sup>, Namrata Singh<sup>1</sup>, Ashish Jain<sup>2</sup>,  
4 Prabhu B. Patil<sup>1</sup>, Vishakha Grover<sup>2†</sup>, Suresh Korpole<sup>1†</sup>

5 1. CSIR-Institute of Microbial Technology, Chandigarh, India. 2. Dr. Harvansh Singh Judge  
6 Institute of Dental Sciences and Hospital, Punjab University, Chandigarh, India.

7

8

9

10

11

12

13

14 Total number of pages: 03

15 Total number of supplementary tables: 00

16 Total number of supplementary figures: 03

17

18

19

20

21

22

23

24

25

26

27

28 **Supplementary Figure S1: Membrane polar lipid analysis of *Megasphaera* sp. strain**

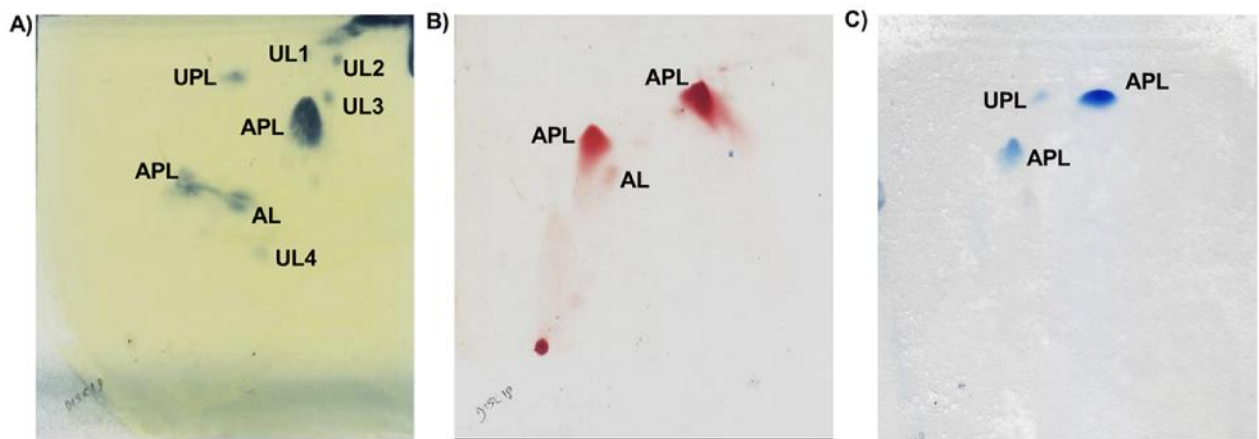
29 **DISK-18.** (A) Total polar lipids stained using molybdato-phosphoric acid. (B) Detection of

30 amino lipids using ninhydrin reagent. (C) Phospholipids detection using the reagent

31 molybdenum blue.

32

33



34

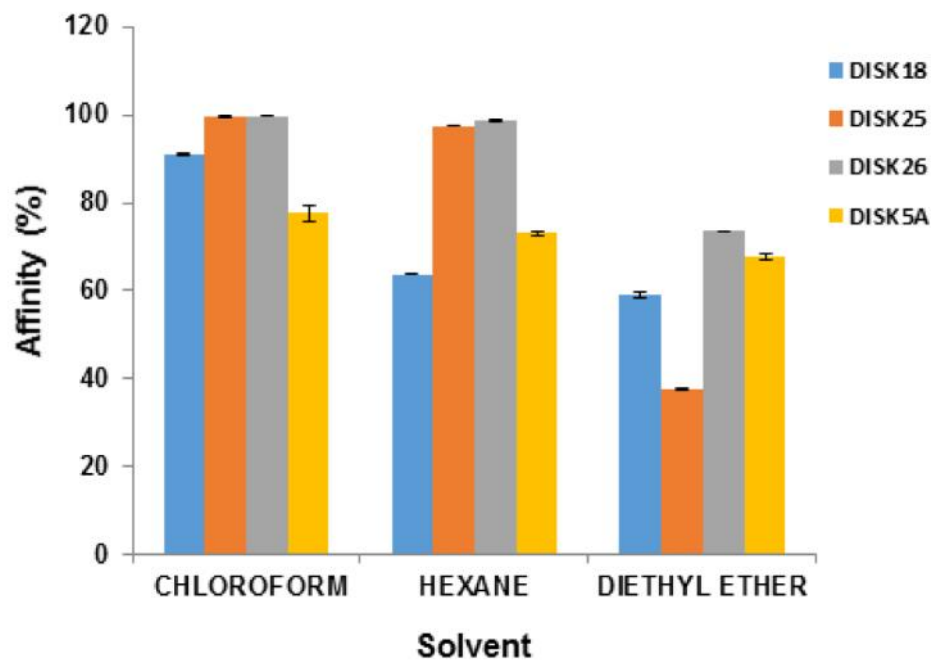
35

36

37 **Supplementary Figure S2: Estimation of cell surface hydrophobicity of oral isolates**

38 **using different solvents.**

39



40

41

42 **Supplementary Figure S3: Microscopic sulfide assay for VCS-producing.**

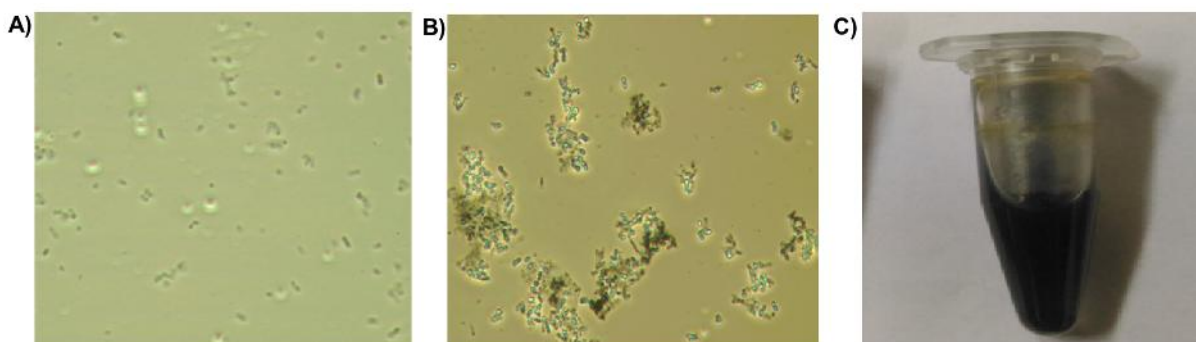
43 **Microorganisms are stained black and are clearly visible under microscope as**

44 **compared to control sample. (A) Cells grown in control medium. (B) Cells grown in**

45 **differential medium showing black precipitation. (C) Black precipitation in differential medium**

46 **upon 48 h growth.**

47



48

49

50