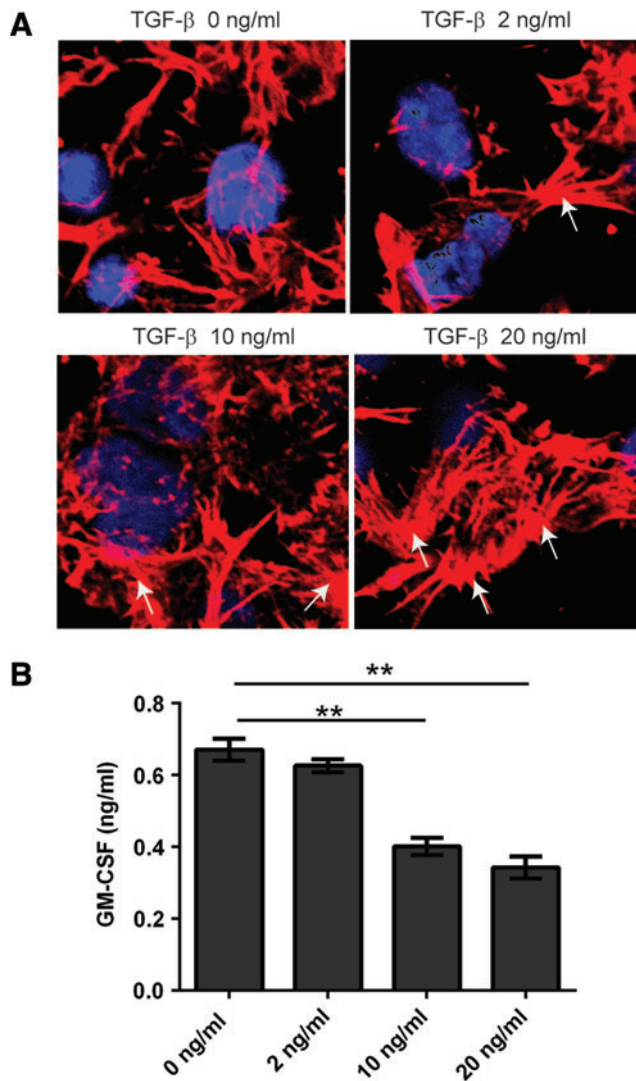


## Supplementary Data



**SUPPLEMENTARY FIG. S1.** TGF- $\beta$  treatment induces the formation of actin stress fibers and inhibits antigen presentation by human CD1d. **(A)** HEK293-CD1d cells were treated with the indicated concentrations of TGF- $\beta$  for 18 h. The cells were then stained with rhodamine phalloidin (*red*) and Hoechst (*blue*). Analysis was by confocal microscopy. The *white arrows* identify stress fibers. **(B)** Aliquots of vehicle- and TGF- $\beta$ -treated HEK293-CD1d cells were cocultured with human NKT cells for 48 h. The level of GM-CSF production by NKT cells into the supernatant was determined by ELISA. \*\* $p < 0.01$  (one-way ANOVA). NKT, natural killer T.