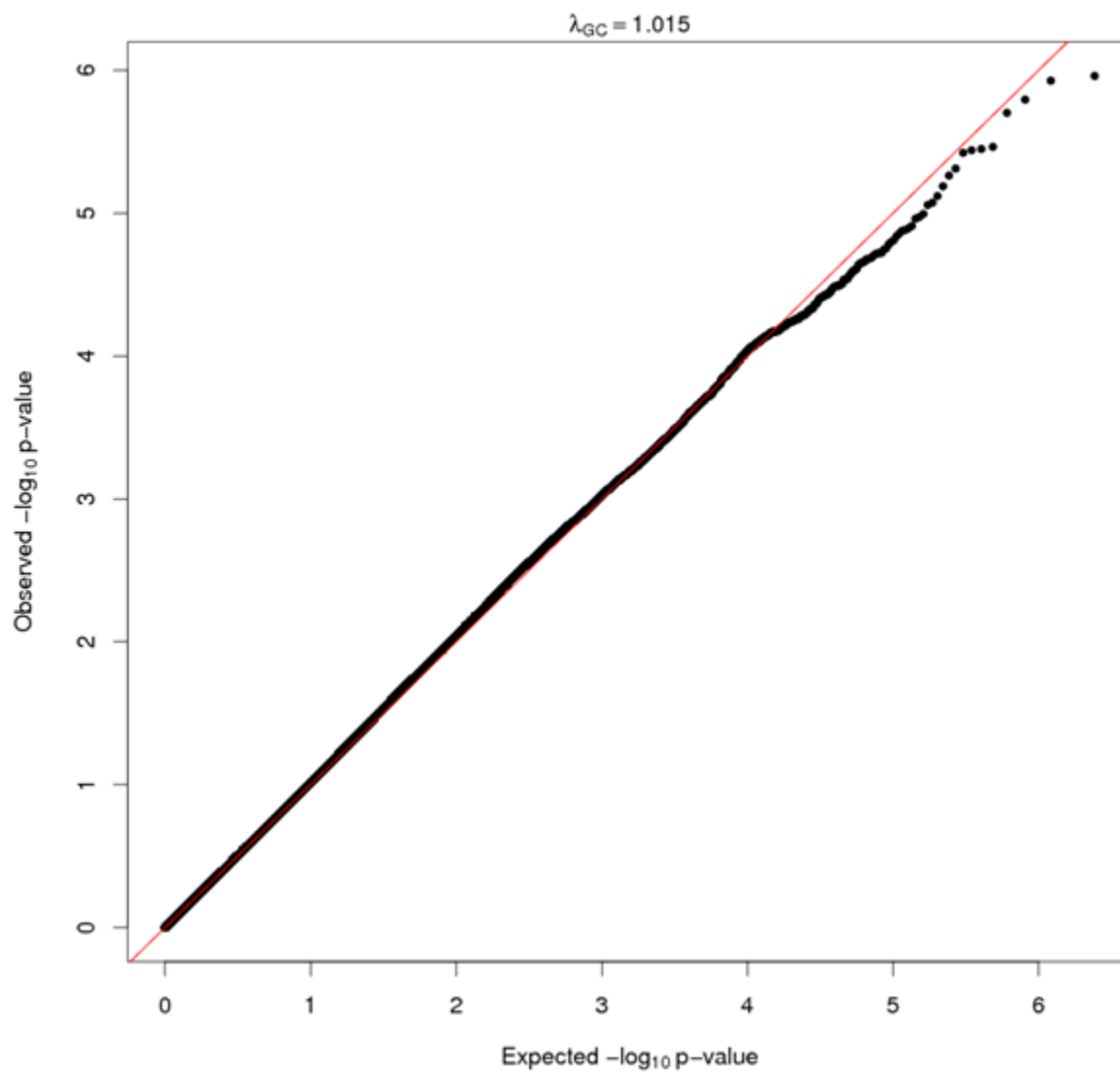


SUPPLEMENTARY DATA

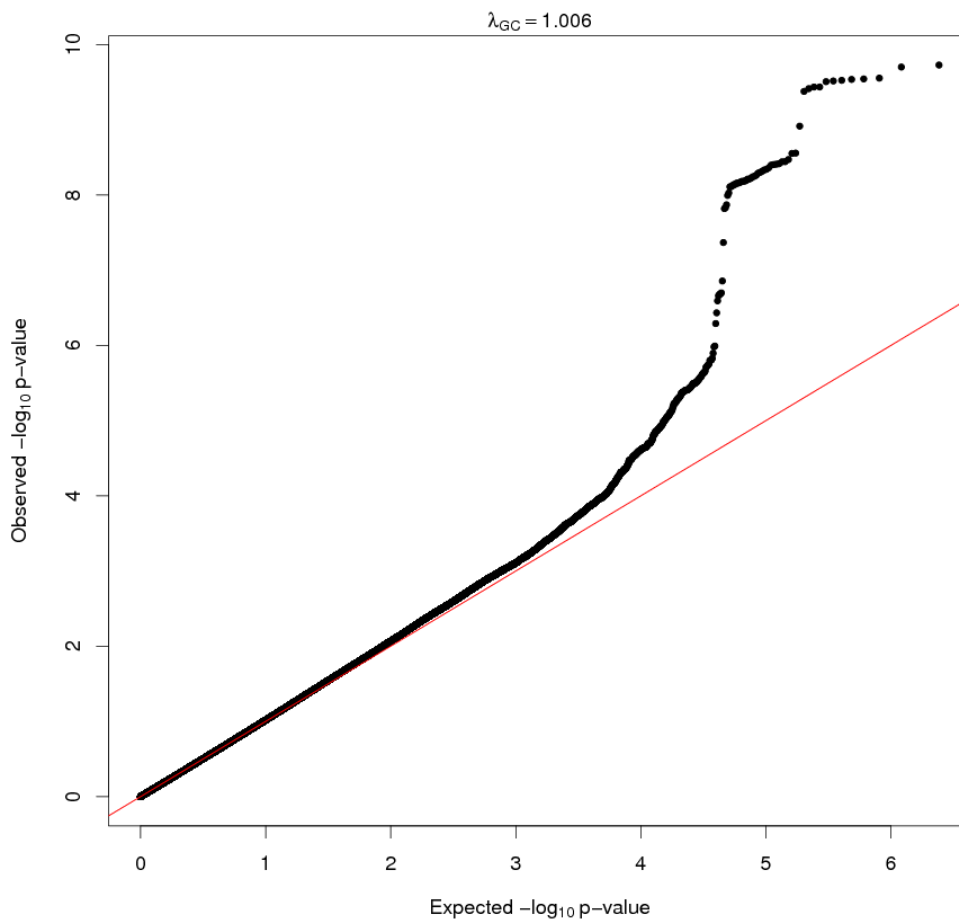
Supplementary Figure 1. QQ plot of association statistics in genome-wide scan for discovery effort (n= 16,753 participants) in Model 1 (adjusted for age and sex only).



).

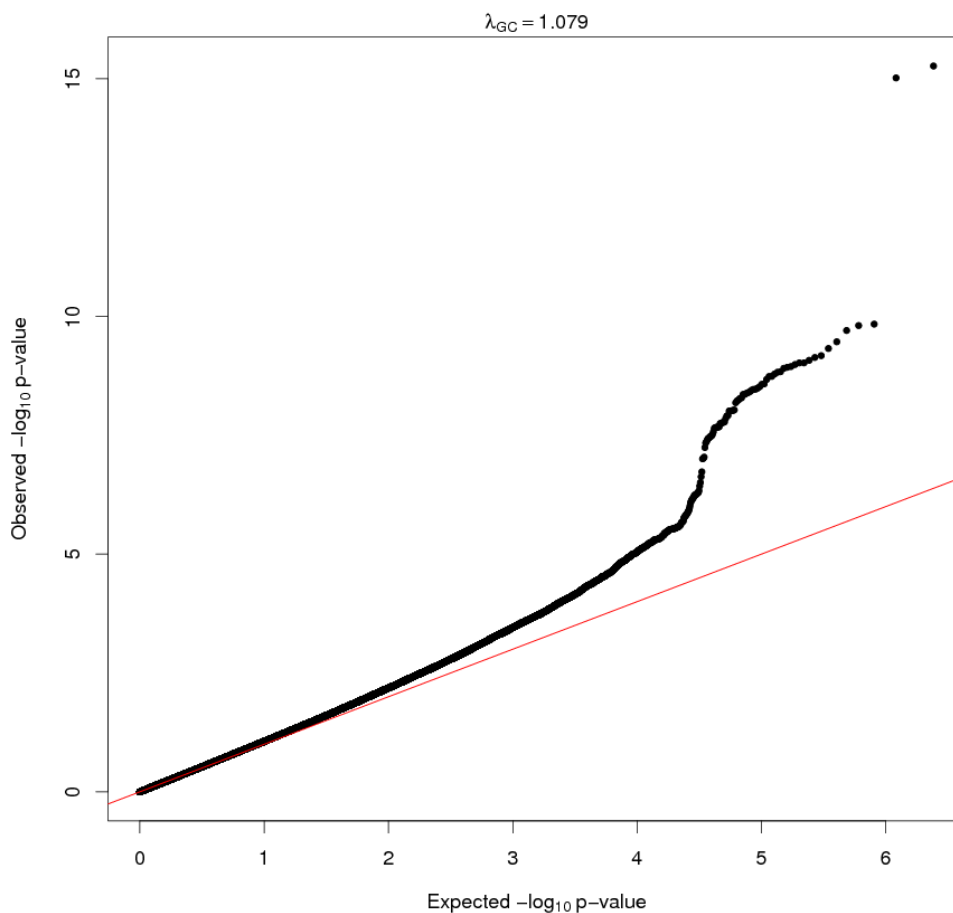
SUPPLEMENTARY DATA

Supplementary Figure 2. QQ plot of association statistics in genome-wide scan for discovery effort (n= 16,735 participants) in Model 2 (adjusted for age, sex, and body mass index).



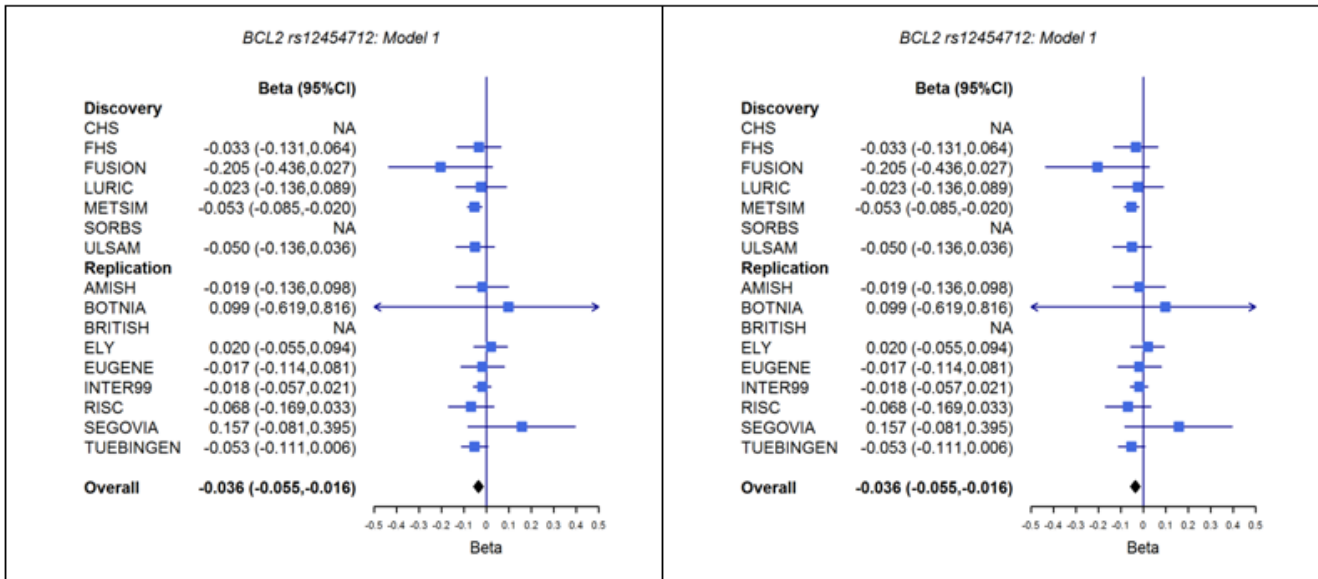
SUPPLEMENTARY DATA

Supplementary Figure 3. QQ plot of association statistics in genome-wide scan for discovery effort (n= 16,735) participants in Model 3 (adjusted for age and sex and analyzing combined influence of the SNP effect adjusted for body mass index [BMI] and the interaction effect between genotype and BMI on ISI).

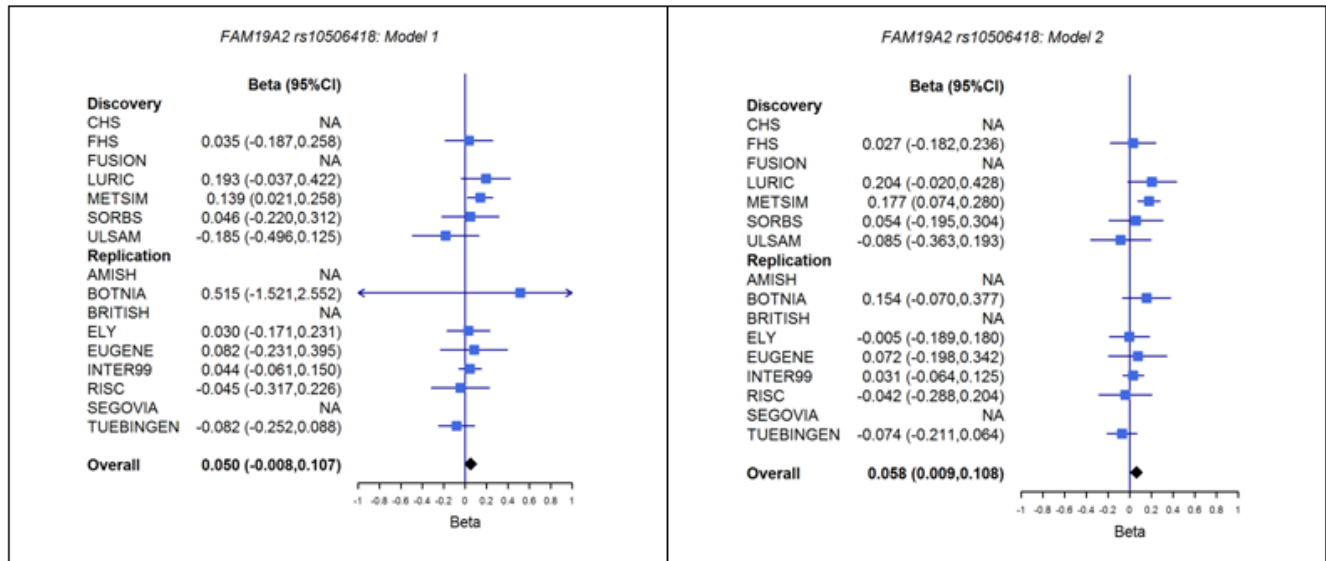


SUPPLEMENTARY DATA

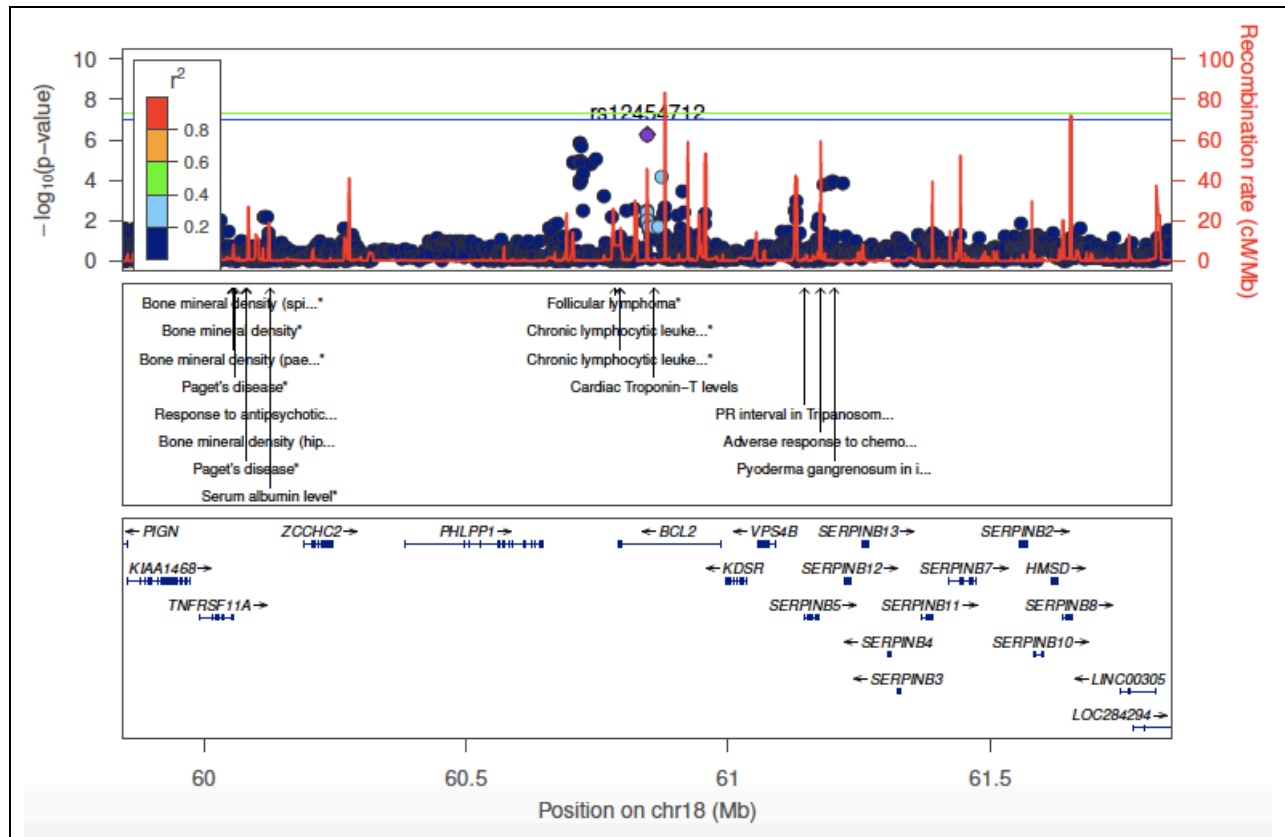
Supplementary Figure 4. Forrest Plot for association of rs12454712 (*BCL2*) with the ISI in Model 1 and Model 2 of the discovery and replication cohorts.



Supplementary Figure 5. Forrest Plot for association of rs10506418 (*FAM19A2*) with the ISI in Model 1 and Model 2 of the discovery and replication cohorts.

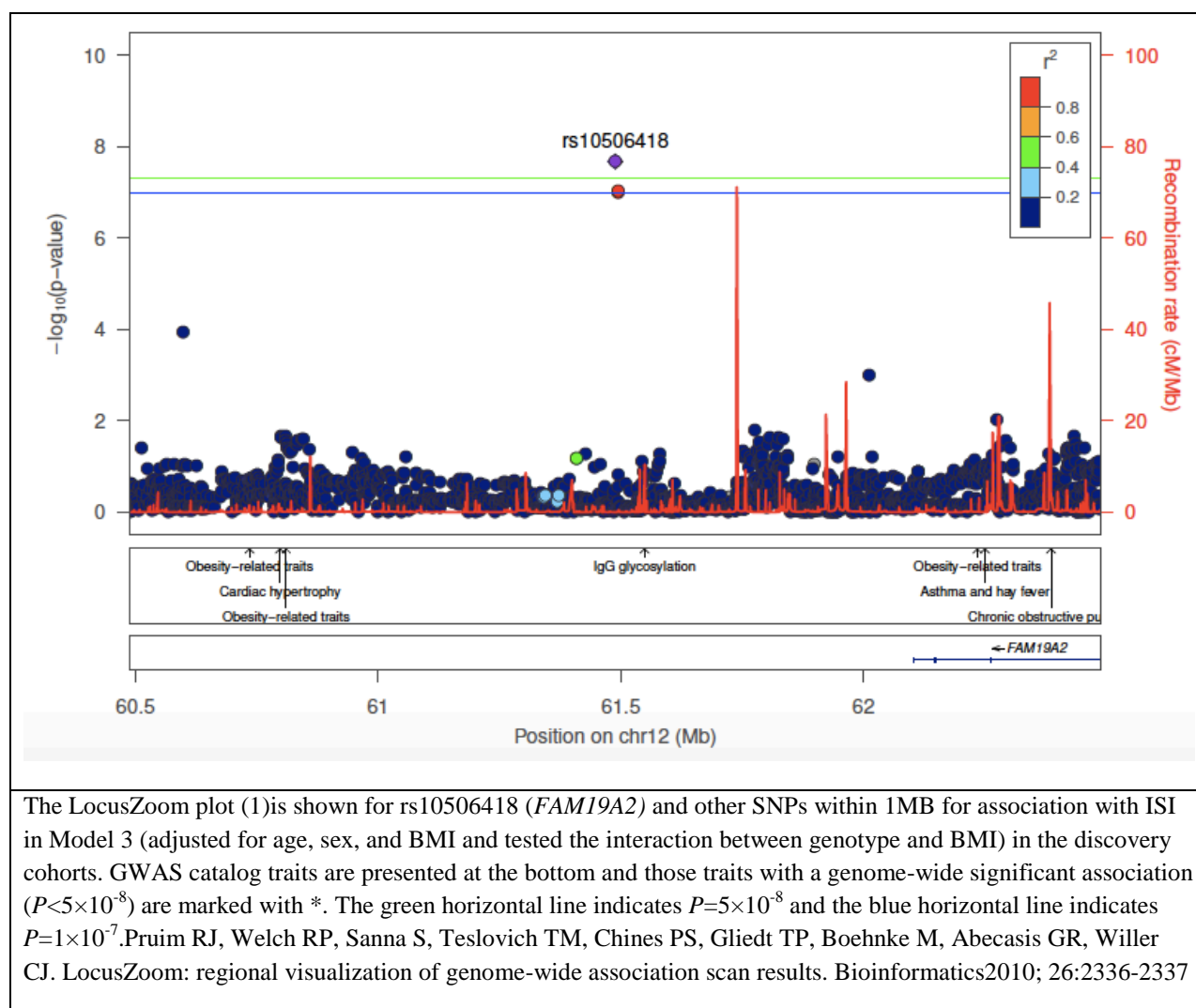


Supplementary Figure 6. Locus Zoom plot for associations at rs12454712 (*BCL2*)



The LocusZoom plot (1) is shown for rs12454712 (*BCL2*) and other SNPs within 1MB for association with ISI in Model 3 (adjusted for age, sex, and BMI and tested the interaction between genotype and BMI) in the discovery cohorts. GWAS catalog traits are presented at the bottom and those traits with a genome-wide significant association ($P < 5 \times 10^{-8}$) are marked with *. The green horizontal line indicates $P = 5 \times 10^{-8}$ and the blue horizontal line indicates $P = 1 \times 10^{-7}$. Prum RJ, Welch RP, Sanna S, Teslovich TM, Chines PS, Gliedt TP, Boehnke M, Abecasis GR, Willer CJ. LocusZoom: regional visualization of genome-wide association scan results. *Bioinformatics* 2010; 26:2336-2337

Supplementary Figure 7. Locus Zoom plot for associations at rs10506418 (*FAM19A2*)



The LocusZoom plot (1) is shown for rs10506418 (*FAM19A2*) and other SNPs within 1MB for association with ISI in Model 3 (adjusted for age, sex, and BMI and tested the interaction between genotype and BMI) in the discovery cohorts. GWAS catalog traits are presented at the bottom and those traits with a genome-wide significant association ($P < 5 \times 10^{-8}$) are marked with *. The green horizontal line indicates $P = 5 \times 10^{-8}$ and the blue horizontal line indicates $P = 1 \times 10^{-7}$. Pruijm RJ, Welch RP, Sanna S, Teslovich TM, Chines PS, Gliedt TP, Boehnke M, Abecasis GR, Willer CJ. LocusZoom: regional visualization of genome-wide association scan results. *Bioinformatics* 2010; 26:2336-2337