

Supporting Information

Design and Synthesis of Potent Quinazolines as Selective β -Glucocerebrosidase Modulators

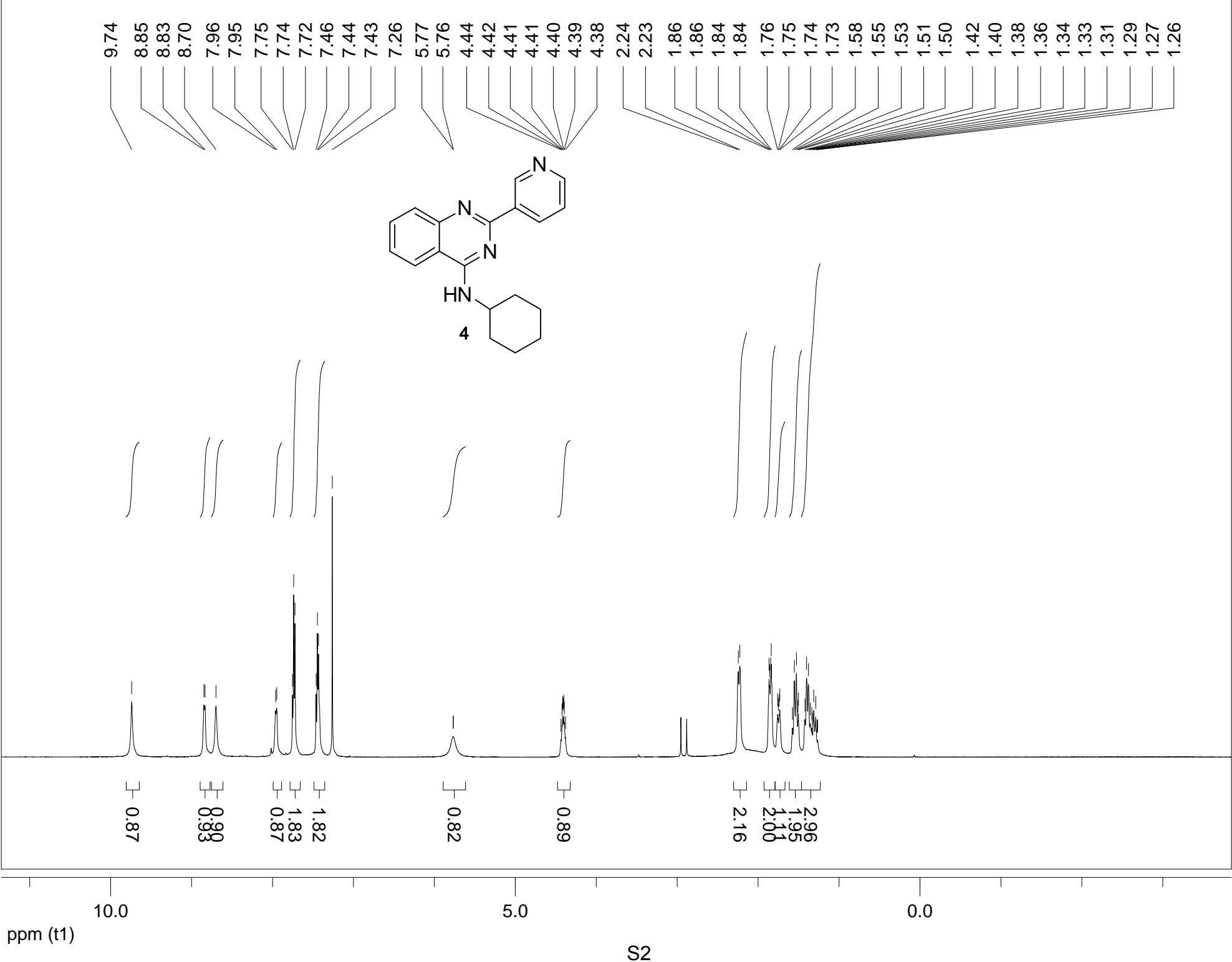
Jianbin Zheng^{1,2}, Long Chen¹, Michael Schwake¹, Richard B. Silverman^{2*}, Dimitri Krainc^{1*}

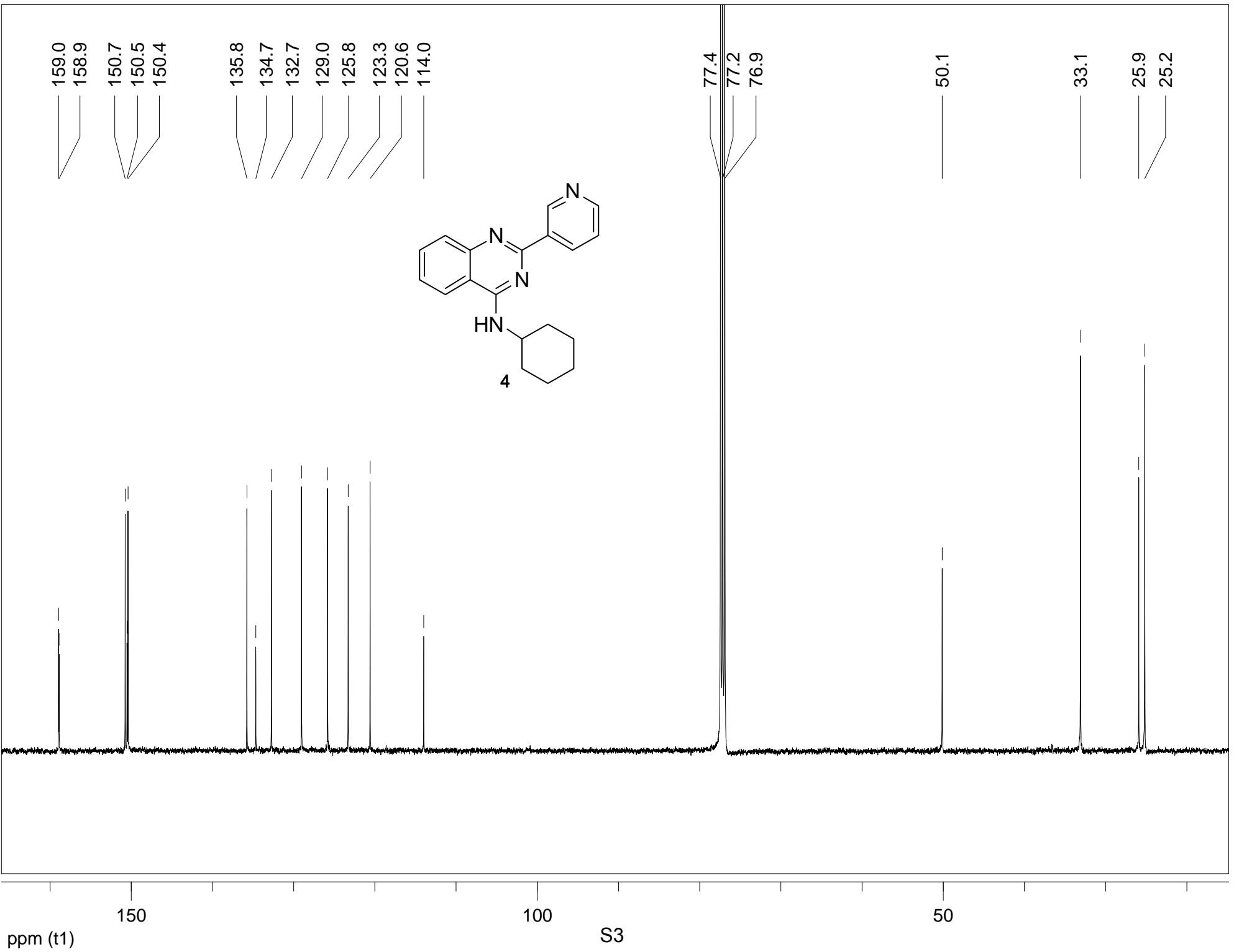
¹ Department of Neurology, Northwestern University Feinberg School of Medicine, Chicago, Illinois, USA

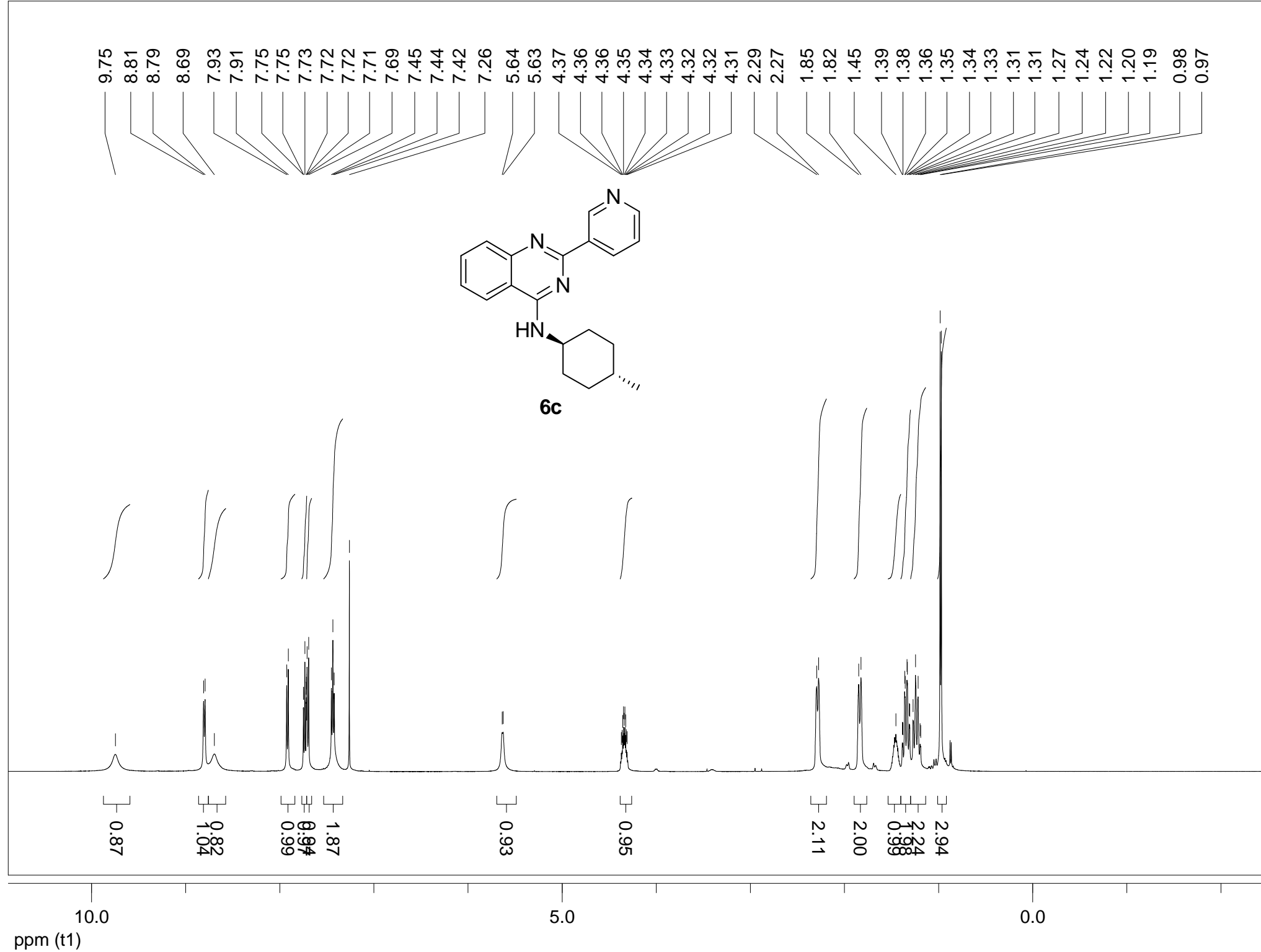
² Department of Chemistry, Department of Molecular Biosciences, Chemistry of Life Processes Institute, Center for Molecular Innovation and Drug Discovery, and Center for Developmental Therapeutics, Northwestern University, Evanston, Illinois, USA

Table of Contents

¹ HNMR spectra for compound 4	S2
¹³ CNMR spectra for compound 4	S3
¹ HNMR spectra for compound 6c	S4
¹³ CNMR spectra for compound 6c	S5
¹ HNMR spectra for compound 7a	S6
¹³ CNMR spectra for compound 7a	S7
¹ HNMR spectra for compound 7b	S8
¹³ CNMR spectra for compound 7b	S9
¹ HNMR spectra for compound 8c	S10
¹³ CNMR spectra for compound 8c	S11
¹ HNMR spectra for compound 9a	S12
¹³ CNMR spectra for compound 9a	S13
¹ HNMR spectra for compound 9b	S14
¹³ CNMR spectra for compound 9b	S15
¹ HNMR spectra for compound 9c	S16
¹³ CNMR spectra for compound 9c	S17
¹ HNMR spectra for compound 11b	S18
¹³ CNMR spectra for compound 11b	S19
¹ HNMR spectra for compound 11d	S20
¹³ CNMR spectra for compound 11d	S21
¹ HNMR spectra for compound 11f	S22
¹³ CNMR spectra for compound 11f	S23
¹ HNMR spectra for compound 11g	S24
¹³ CNMR spectra for compound 11g	S25
¹ HNMR spectra for compound 11h	S26
¹³ CNMR spectra for compound 11h	S27





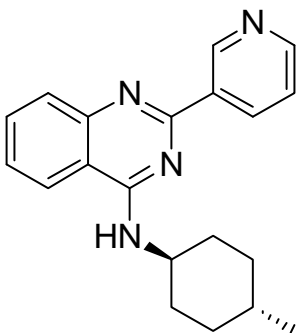


159.1
158.9
150.8
150.6
150.5
135.7
134.7
132.8
129.1
125.8
123.3
120.6
114.0

77.5
77.2
76.9

50.5

34.2
33.1
32.4
22.4



6c

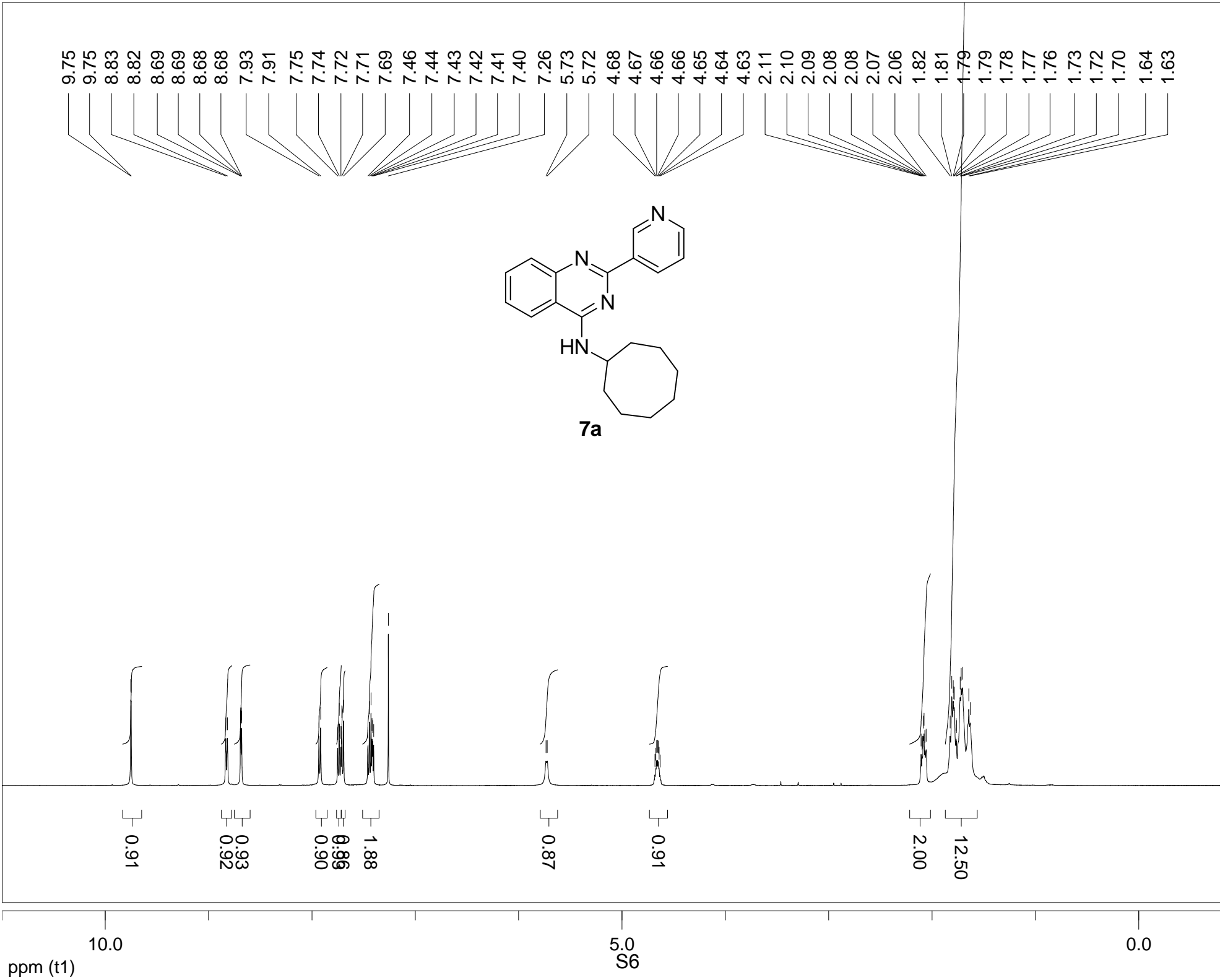
ppm (t1)

150

100

50

S5



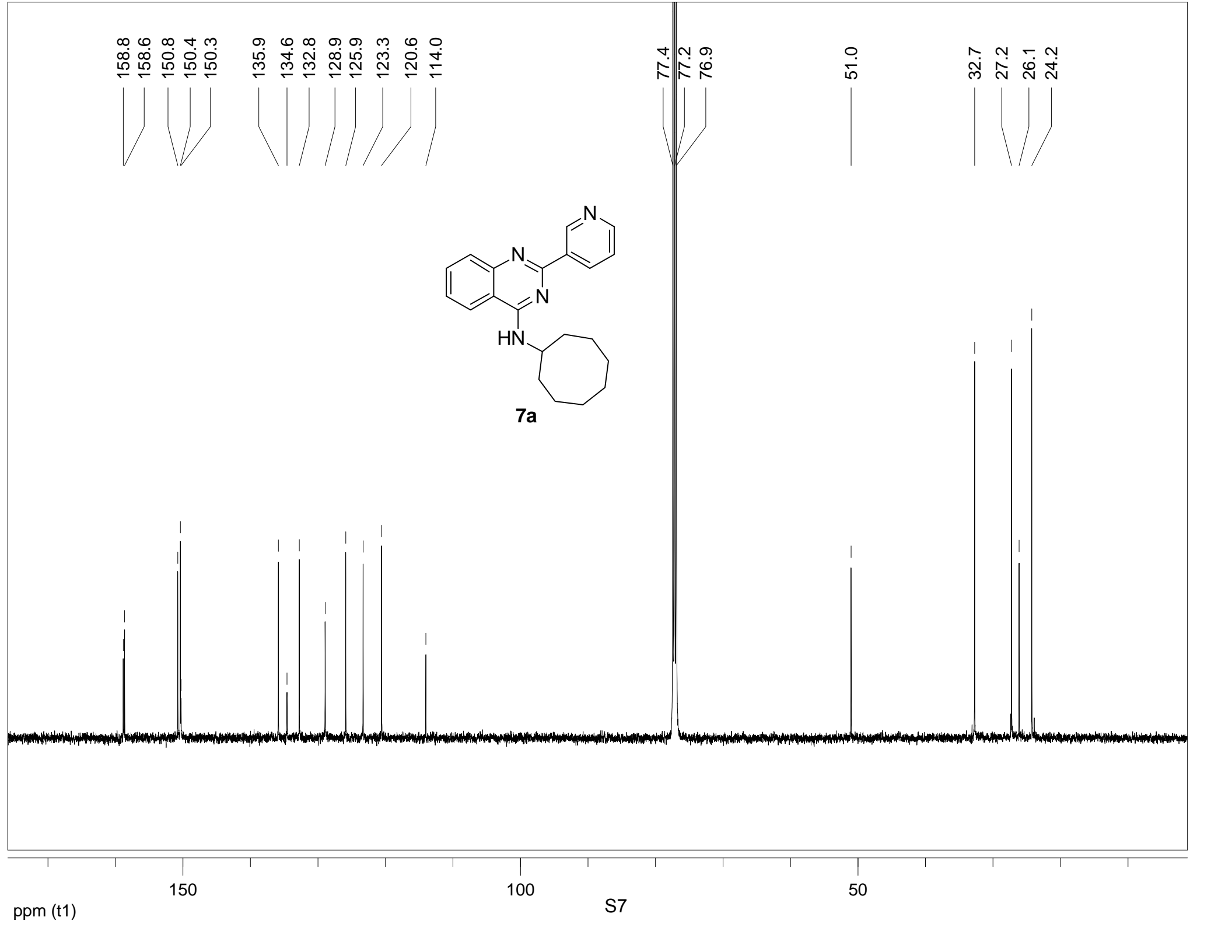
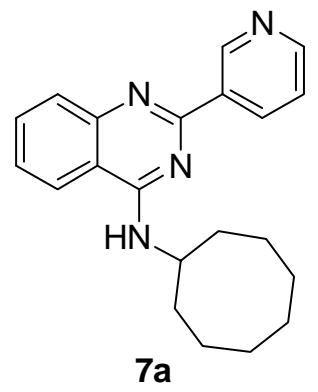
158.8
158.6
150.8
150.4
150.3

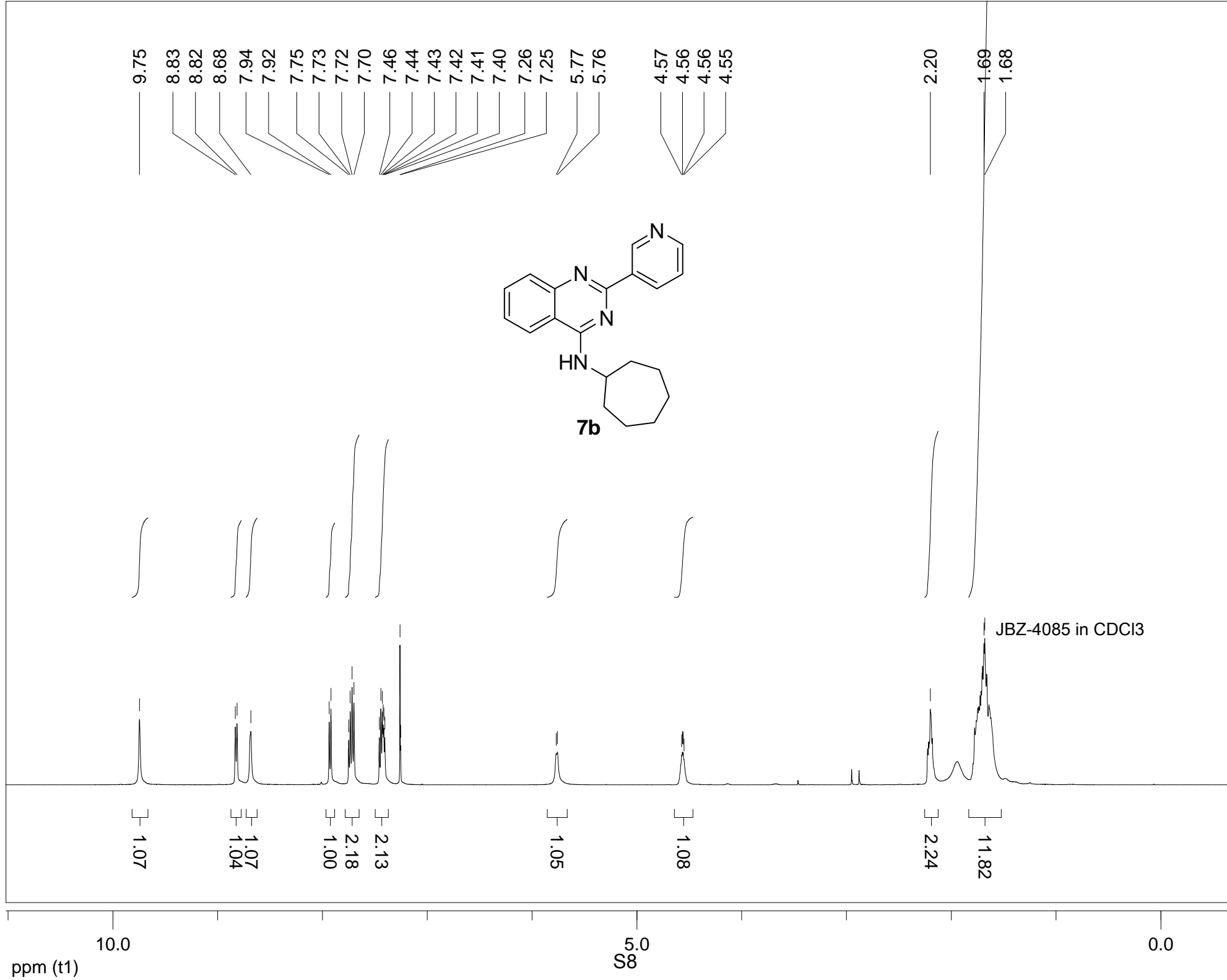
135.9
134.6
132.8
128.9
125.9
123.3
120.6
114.0

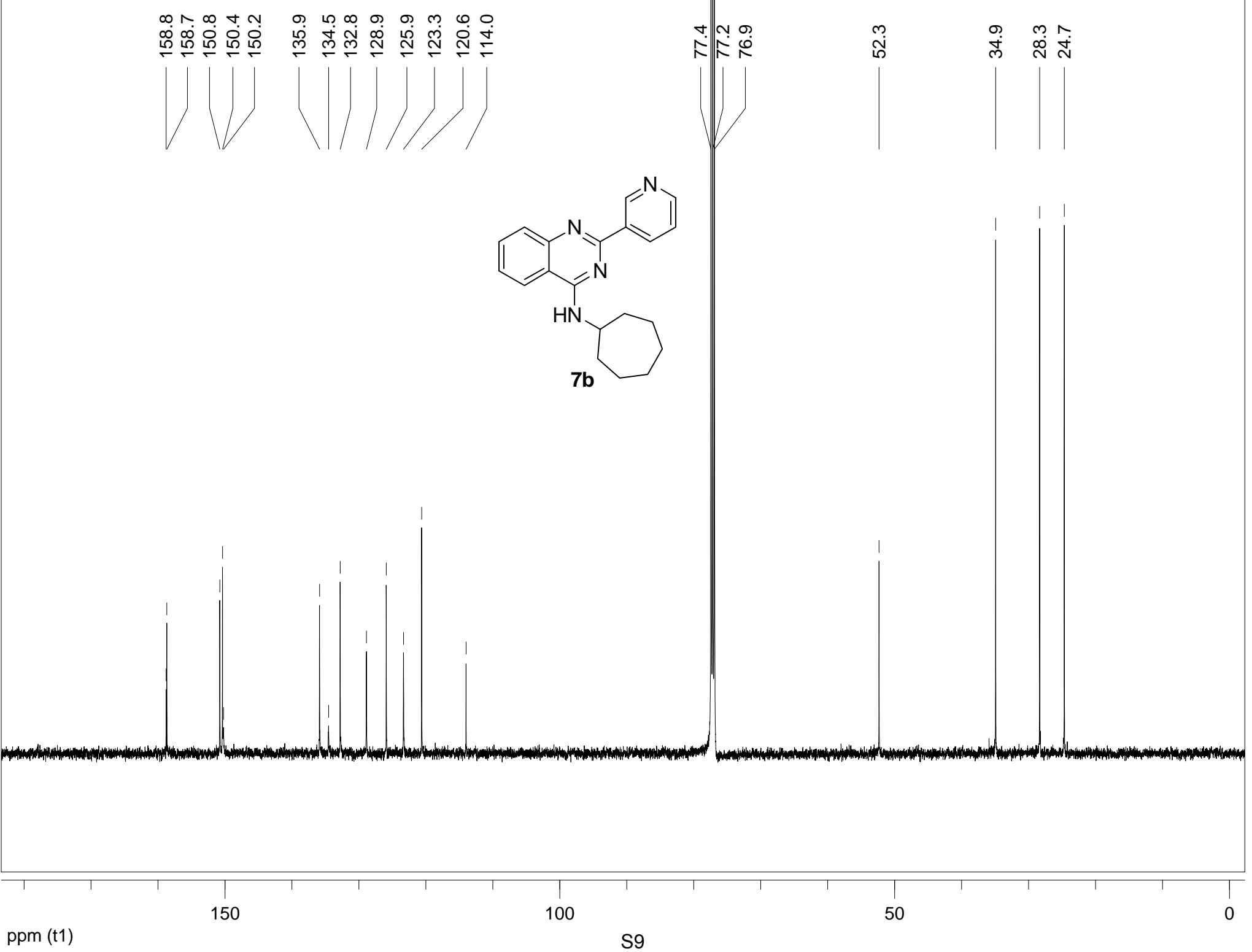
77.4
77.2
76.9

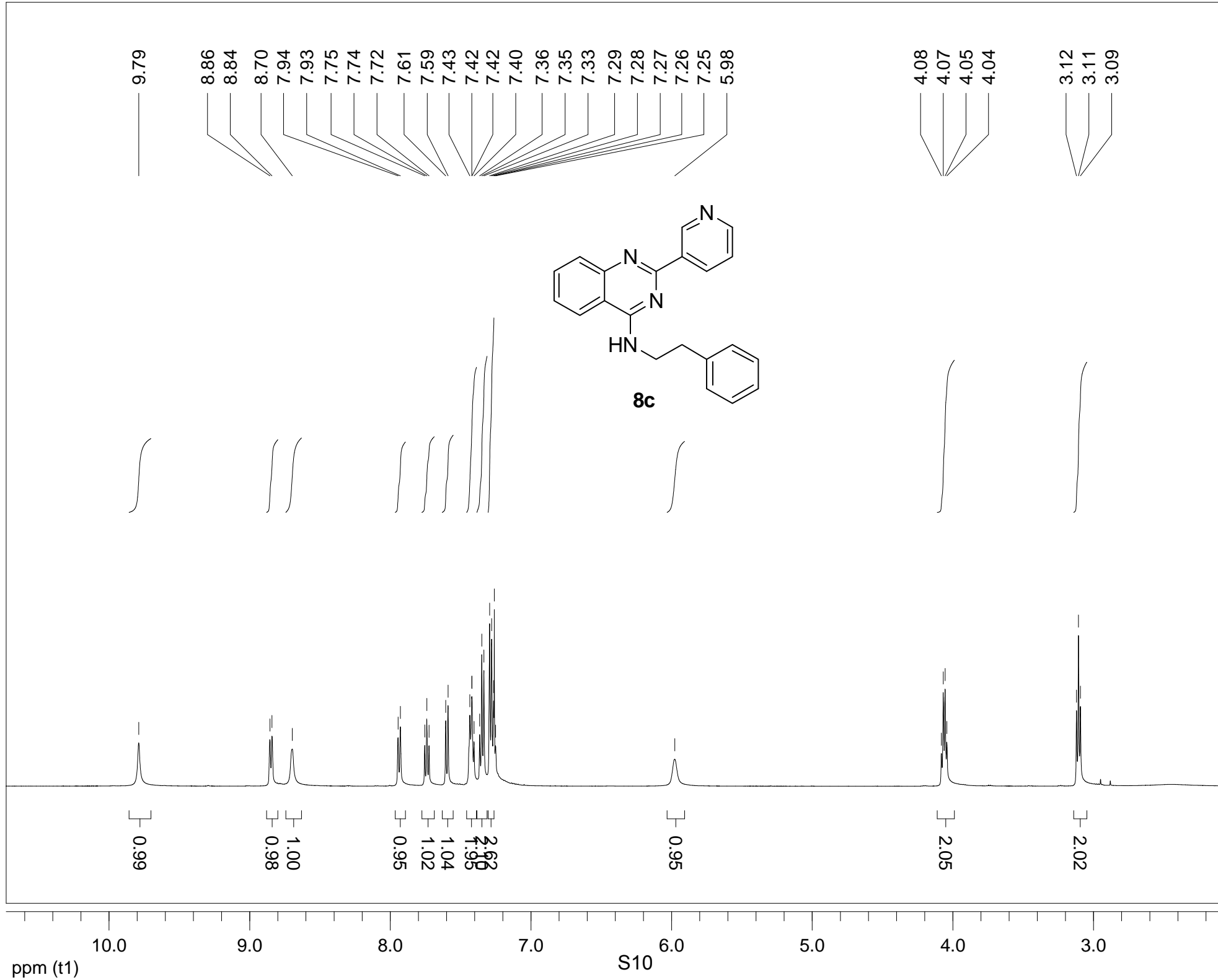
51.0

32.7
27.2
26.1
24.2







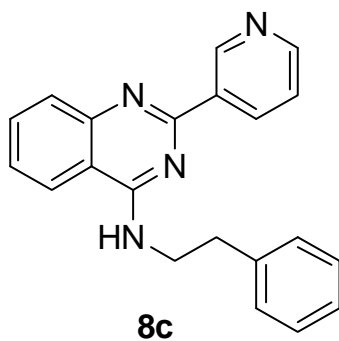


159.7
158.8
150.8
150.3
150.3
139.1
135.9
134.5
132.9
129.0
128.9
126.8
126.1
123.3
120.6
114.0

77.4
77.2
76.9

42.7

35.5



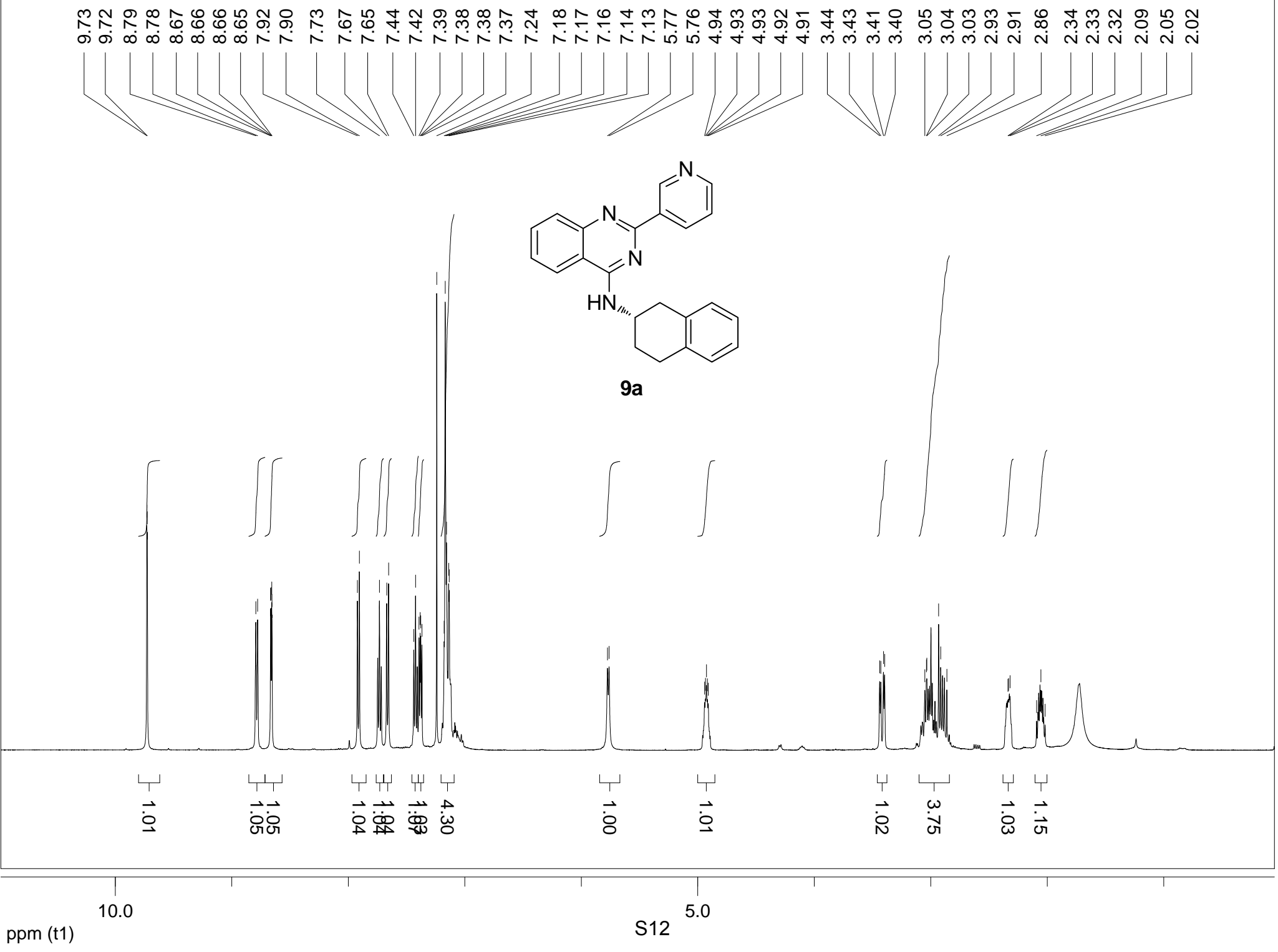
ppm (t1)

150

100

S11

50



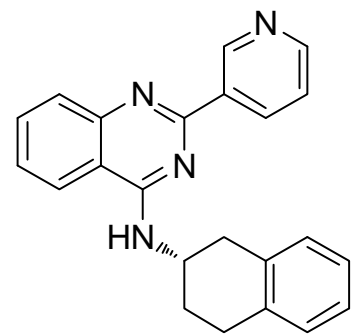
159.3
158.8
150.9
150.5
150.4
135.8
134.5
134.3
132.9
129.8
129.2
129.1
126.5
126.3
126.0
123.3
120.7
114.0

77.5
77.2
76.9

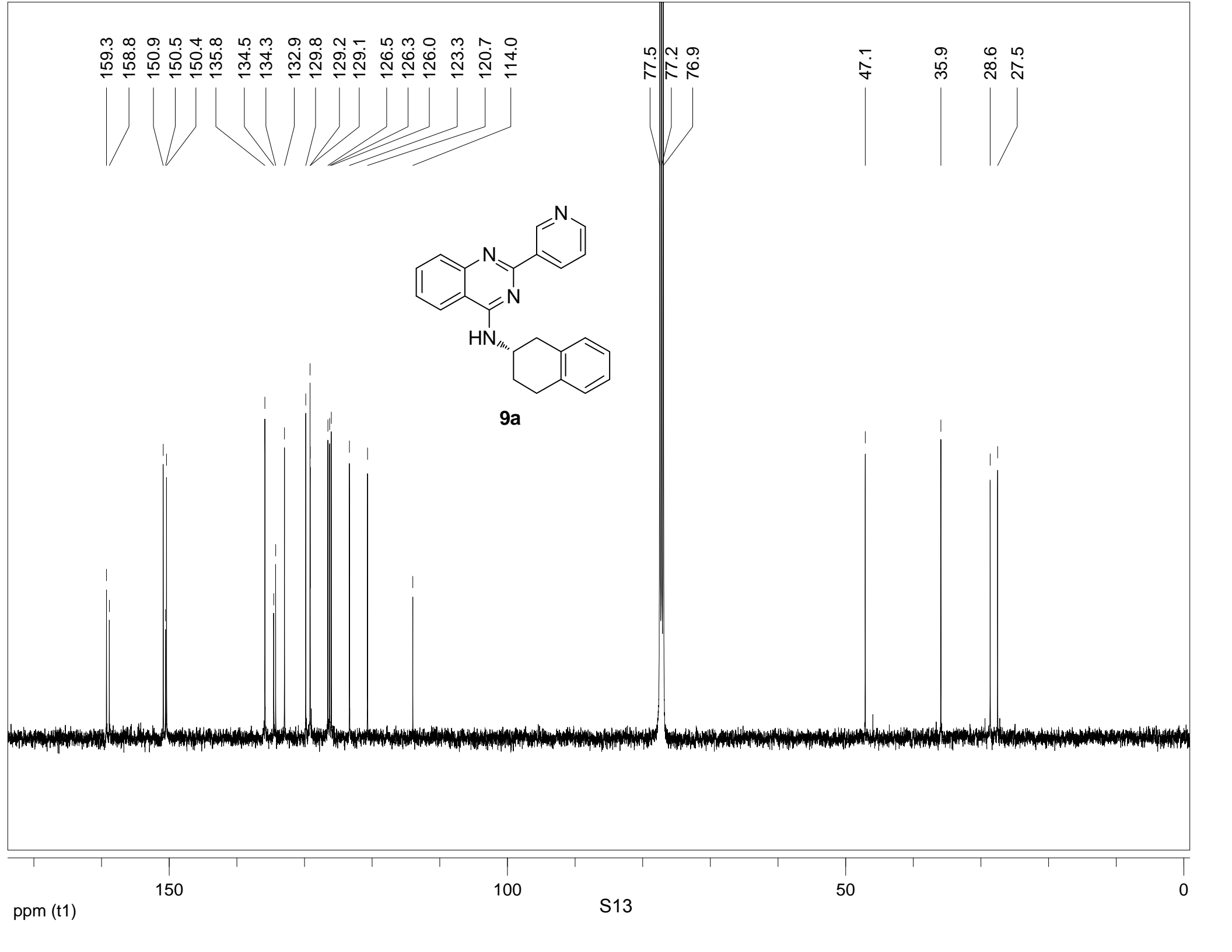
47.1

35.9

28.6
27.5



9a



ppm (t1)

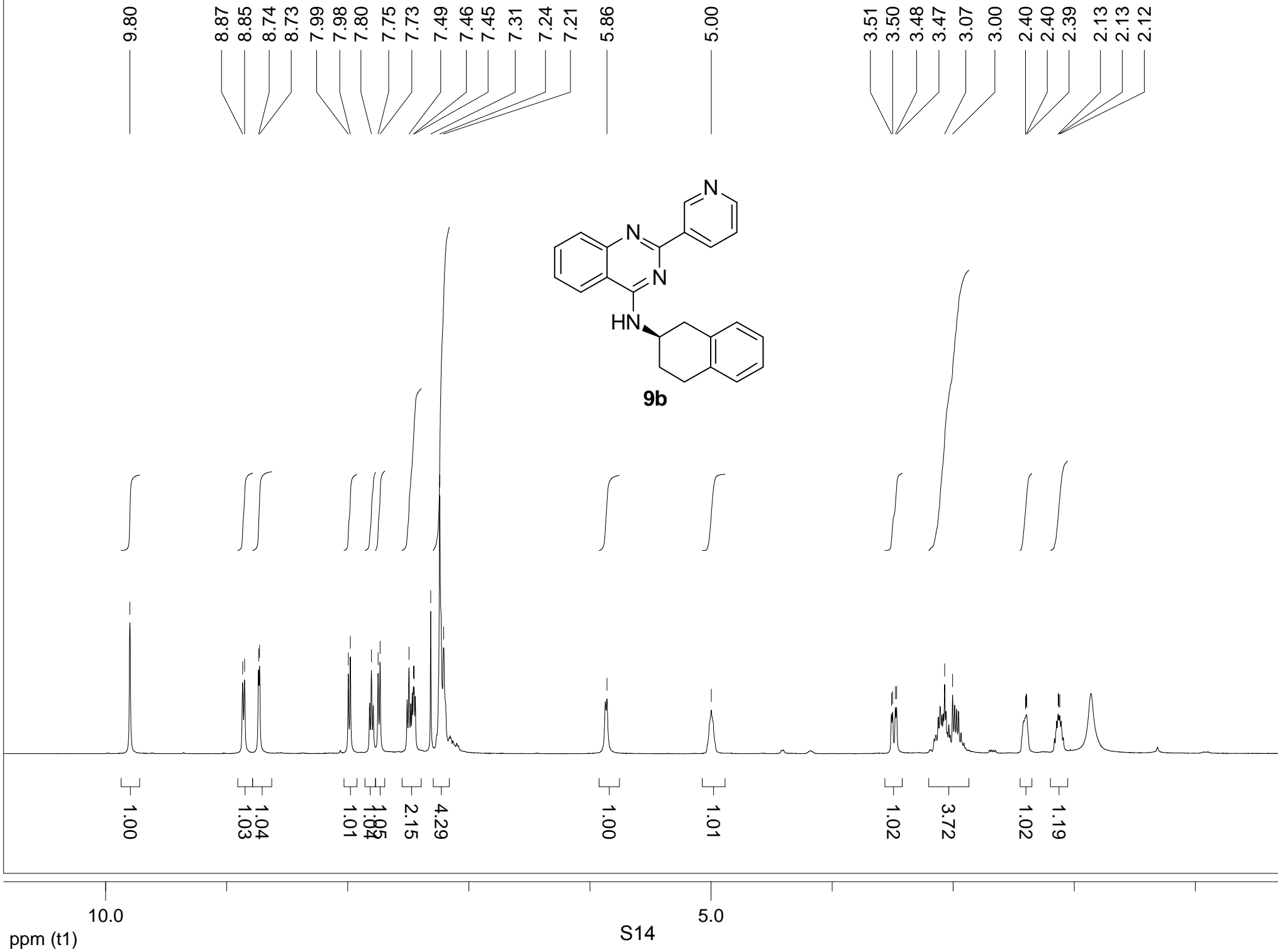
150

100

S13

50

0



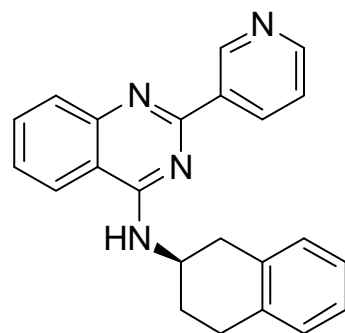
159.3
158.8
150.8
150.5
150.4
135.9
135.8
134.5
134.3
132.9
129.8
129.2
129.1
126.5
126.3
126.0
123.3
120.7
114.0

77.5
77.2
76.9

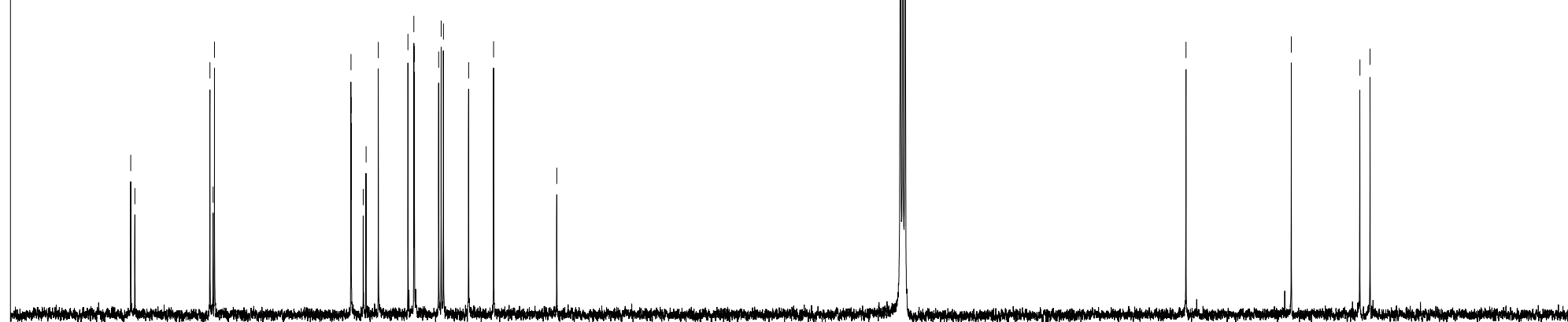
47.1

35.9

28.6
27.5



9b



ppm (t1)

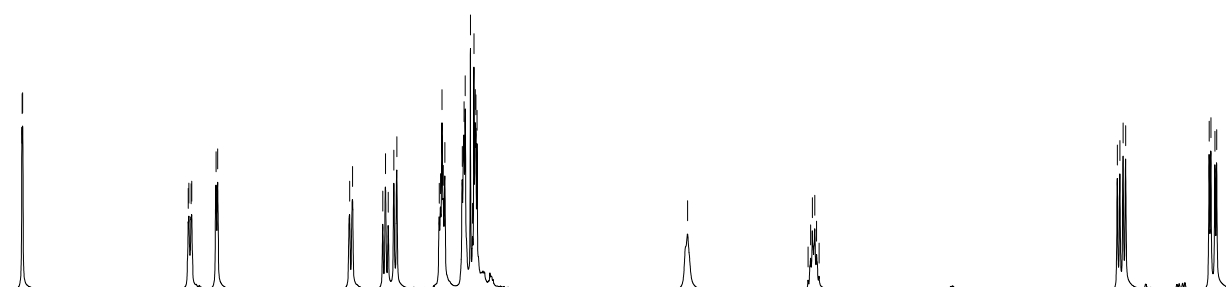
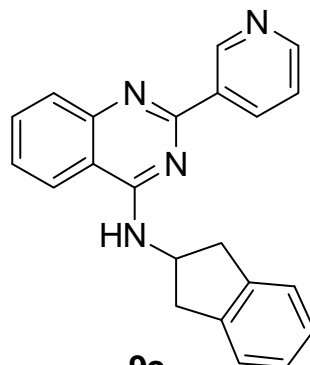
S15

50

150

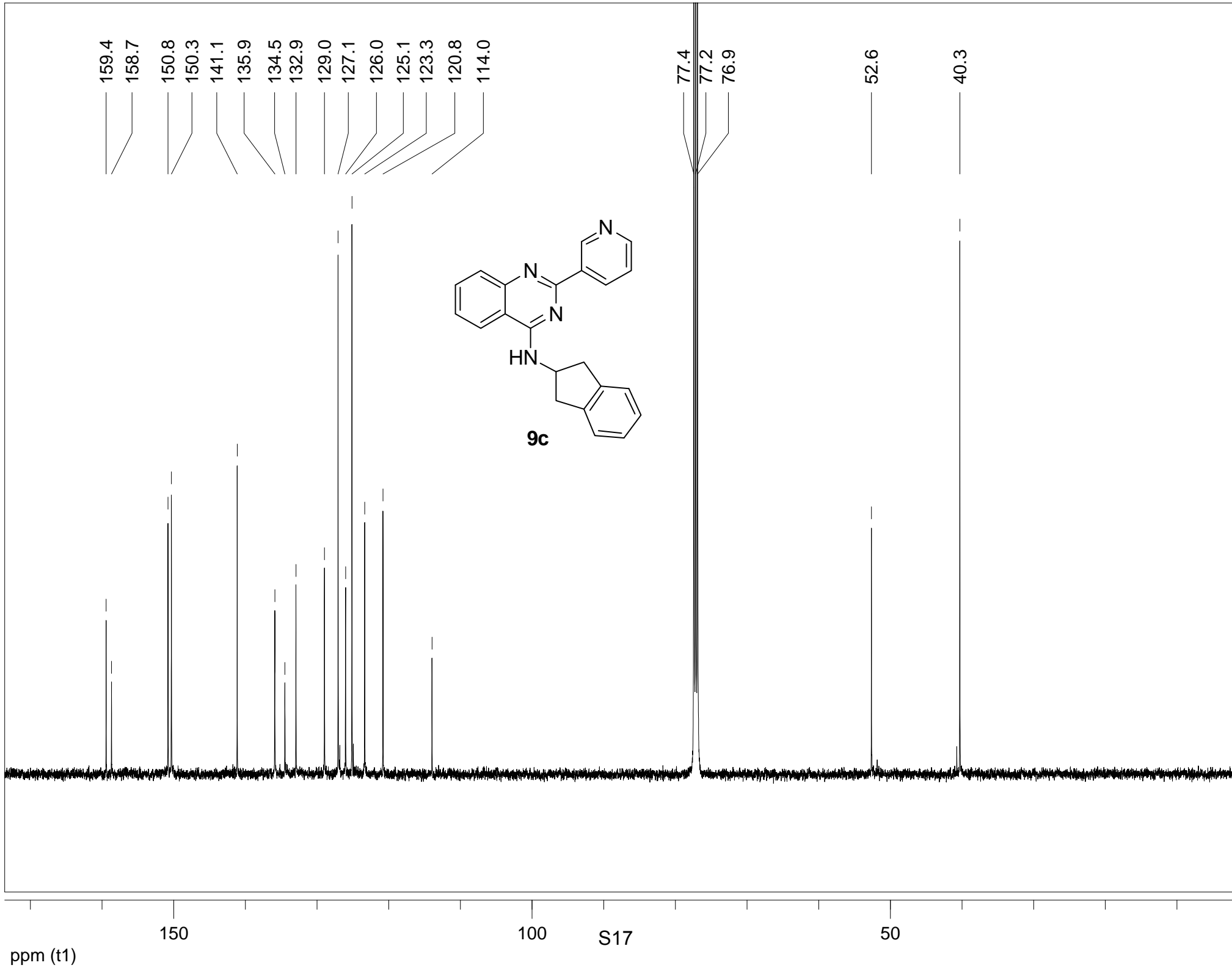
100

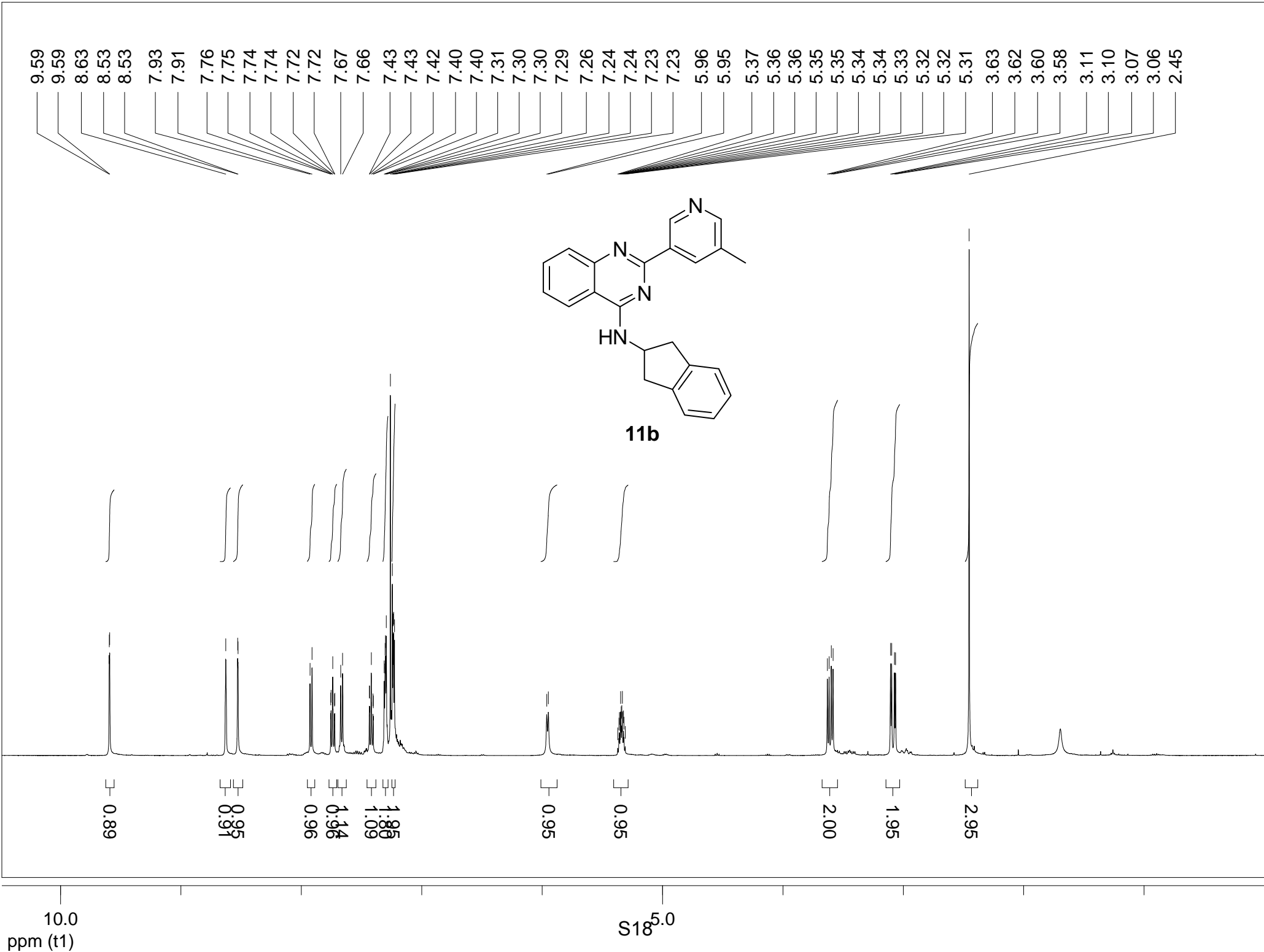
9.78 9.78 8.85 8.84 8.83 8.83 8.69 8.68 7.94 7.92 7.75 7.74 7.72 7.69 7.67 7.44 7.43 7.42 7.41 7.40 7.31 7.30 7.29 7.26 7.25 7.24 7.23 7.23 7.22 6.04 5.36 5.35 5.34 5.32 5.31 5.30 3.62 3.61 3.59 3.58 3.11 3.10 3.07 3.06



0.97 1.00 1.01 1.07 2.09 2.08 0.92 0.97 2.00 2.05

ppm (t1) 10.0 5.0 S16





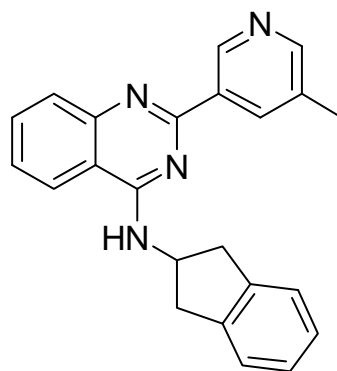
159.5
158.9
151.3
150.5
147.7
141.2
136.1
134.1
132.8
132.7
128.9
127.0
125.8
125.1
121.0
114.0

77.5
77.2
76.9

52.6

40.2

18.6



11b



