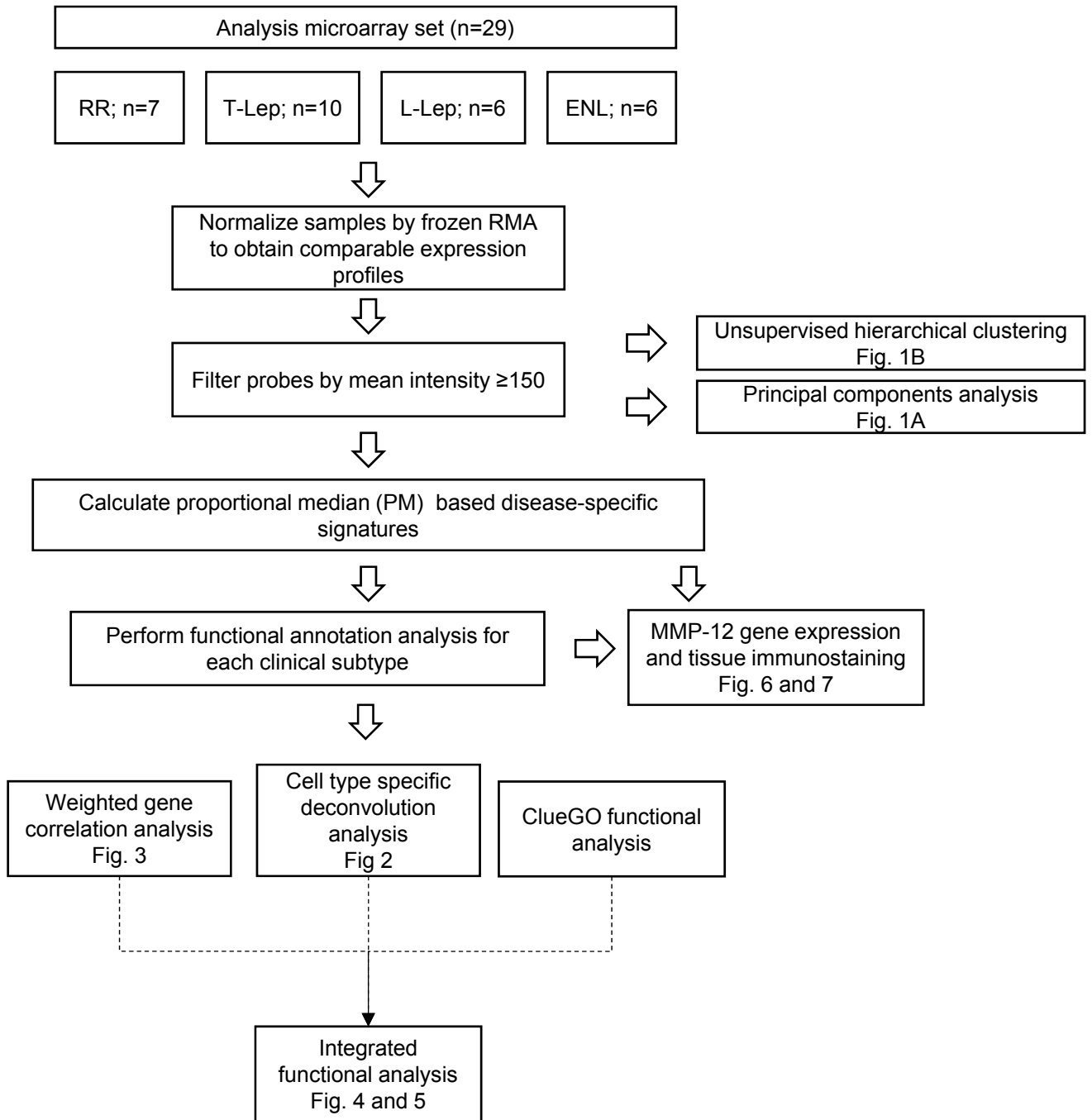


Figure S1



214	229839_at	SCARA5	1.46	203167_at	TIMP2	2.41	219259_at	SEMA4A	1.30	228297_at	---	3.11
215	228698_at	SOX7	1.46	223280_x_at	M54A6A	2.41	213933_at	PTGER3	1.30	219869_s_at	SLC39A8	3.10
216	225698_at	NCRNA00219	1.46	223343_at	M54A7	2.40	225863_s_at	C19orf12	1.30	213869_x_at	THY1	3.10
217	238900_at	HLA-DRB1///HLA-	1.45	214501_s_at	H2AFY	2.40	205470_s_at	KLK11	1.30	208549_x_at	PTMA	3.09
218	203797_at	VSNL1	1.45	204467_s_at	SNCA	2.40	219181_at	LIPG	1.30	203324_s_at	CAV2	3.09
219	226535_at	ITGB6	1.45	201780_s_at	RNF13	2.40	212875_s_at	C2CD2	1.30	228487_s_at	---	3.09
220	209101_at	CTGF	1.45	228624_at	TMEM144	2.40	226736_at	CHURC1	1.30	202458_at	PRSS23	3.07
221	222891_s_at	BCL11A	1.45	205801_s_at	RASGRP3	2.39	226456_at	RM12	1.30	223121_s_at	SFRP2	3.06
222	206165_s_at	CLCA2	1.45	226867_at	DENND4C	2.39	226424_at	CAP5	1.30	1564803_at	KRTP11-1	3.04
223	212294_at	GNG12	1.45	209380_s_at	ABCC5	2.38	225226_at	FAM40A	1.30	212983_at	HRAS	3.04
224	234994_at	TMEM200A	1.45	219666_at	M54A6A	2.38	230413_s_at	---	1.30	226697_at	FAM114A1	3.03
225	243041_s_at	---	1.45	203651_at	ZFYVE16	2.38	212002_at	C1orf144	1.30	212848_s_at	C9orf3	3.02
226	221526_x_at	PARD3	1.45	209823_x_at	HLA-DQB1	2.38	214428_x_at	C4A /// C4I	1.30	219936_s_at	GPR87	3.02
227	223217_s_at	NFKB1	1.44	202741_at	PRKACB	2.37	202180_s_at	MVP	1.29	218468_s_at	GREM1	3.02
228	220952_s_at	PLEKHA5	1.44	213797_at	RSAD2	2.37	210839_s_at	ENPP2	1.29	216449_x_at	HSP90B1	3.02
229	239155_at	CXADR	1.44	204430_s_at	SLC2A5	2.37	209309_at	AZGP1	1.29	244107_at	---	3.02
230	206170_at	ADR82	1.44	201739_at	SGK1	2.37	200962_at	RPL31	1.29	204894_s_at	AOC3	3.02
231	212573_at	ENDOD1	1.44	209727_at	GM2A	2.36	200860_s_at	CNOT1	1.29	210423_s_at	SLC11A1	3.01
232	205913_at	PLIN1	1.44	209683_at	FAM49A	2.35	206884_s_at	SCEL	1.29	210072_at	CCL19	3.01
233	224799_at	NDFIP2	1.44	243882_at	---	2.35	212538_at	DOCK9	1.29	227742_at	CLIC6	3.01
234	204731_at	TGFBR3	1.44	222881_at	HPSE	2.35	217187_at	MUC5AC	1.29	230333_at	---	3.01
235	234989_at	---	1.44	223423_at	GPR160	2.34	229839_at	SCARA5	1.29	204510_at	CDC7	3.00
236	204712_at	WIF1	1.44	242625_at	RSAD2	2.34	231906_at	HOXD8	1.29	1558924_s_at	CLIP1	3.00
237	1552354_at	C19orf26	1.44	214669_x_at	IGKC	2.34	230161_at	---	1.29	225541_at	RPL22L1	3.00
238	209309_at	AZGP1	1.44	212314_at	SEL1L3	2.34	217767_at	C3	1.29	206932_at	CH25H	2.99
239	217087_at	C1orf68	1.44	200832_s_at	SCD	2.33	209121_x_at	NR2F2	1.28	210128_x_at	LTBR4R	2.99
240	200644_at	MARCKSL1	1.44	204440_at	CD83	2.33	205987_at	CD1C	1.28	205623_at	ALDH3A1	2.97
241	218898_at	FAM57A	1.44	217552_x_at	CR1	2.33	230381_at	C1orf186 /	1.28	226179_at	SLC25A37	2.97
242	232116_at	GRHL3	1.44	213275_x_at	CTSB	2.33	218847_at	IGF2BP2	1.28	228918_at	LOC100288617	2.97
243	209612_s_at	ADH1B	1.44	210757_x_at	DAB2	2.33	226047_at	MRV1	1.28	226930_at	FNDC1	2.96
244	212236_x_at	KRT17	1.43	201272_at	AKR1B1	2.32	205236_x_at	SOD3	1.28	242405_at	---	2.96
245	1565484_x_at	EGFR	1.43	1559776_at	---	2.32	206296_x_at	MAP4K1	1.28	210029_at	IDO1	2.95
246	203881_s_at	DMD	1.43	203932_at	HLA-DMB	2.32	207165_at	HMMR	1.28	229228_at	CREB5	2.94
247	238028_at	C6orf132	1.43	221530_s_at	BHLHE41	2.32	218645_at	ZNF277	1.28	212481_s_at	TPM4	2.94
248	224008_s_at	KCNK7	1.43	212737_at	GM2A	2.32	205529_s_at	RUNX1T1	1.28	200974_at	ACTA2	2.94
249	238654_at	VSIG10L	1.43	220061_at	ACSM5	2.30	226022_at	SASH1	1.28	231771_at	GJB6	2.94
250	211796_s_at	TRBC1///TRBC2	1.43	201280_s_at	DAB2	2.30	231513_at	---	1.28	203510_at	MET	2.94