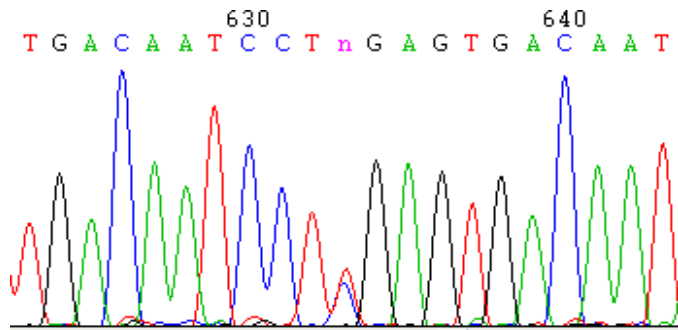


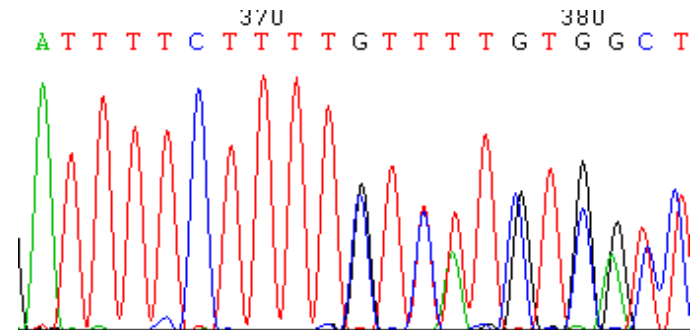
The mutations of ML patients

Total number: 15

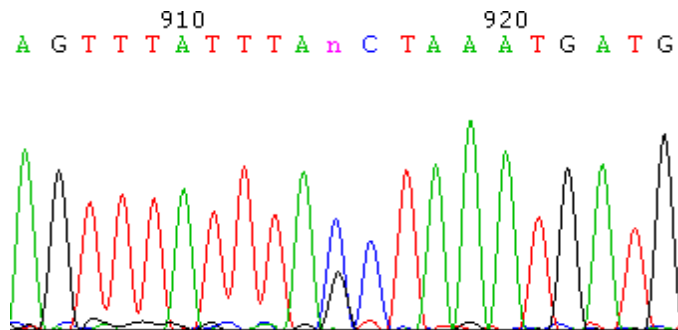
c.1090C>T



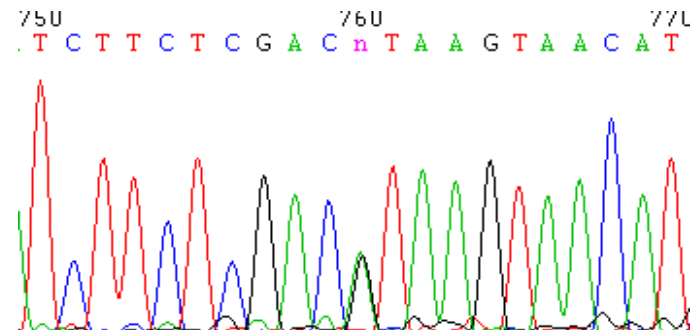
c.2541-2545delAAAAG



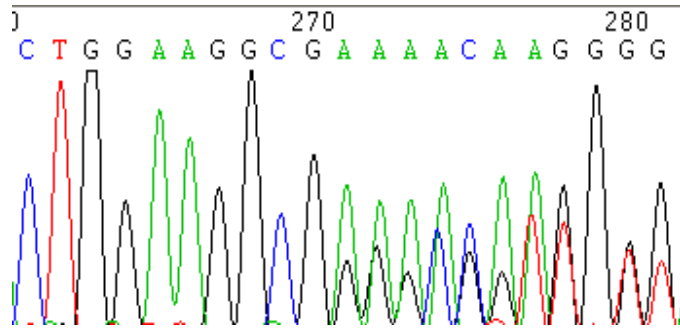
c.1212C>G



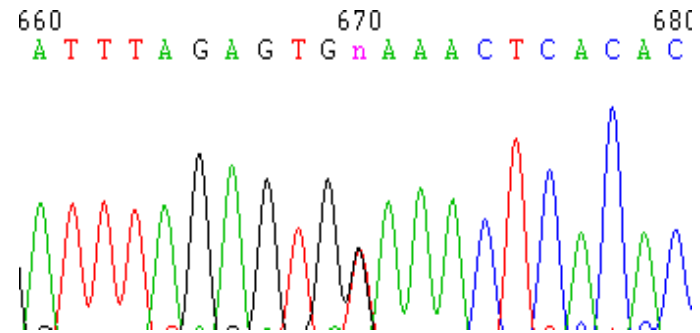
c.2715+1G>A



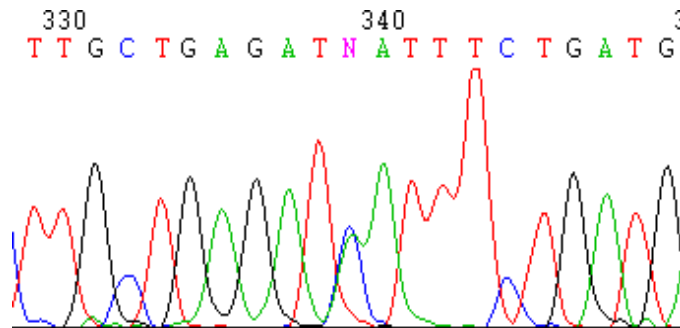
c.98delC



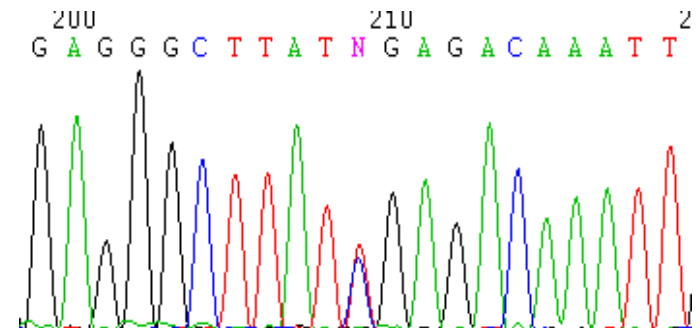
c.2455G>T



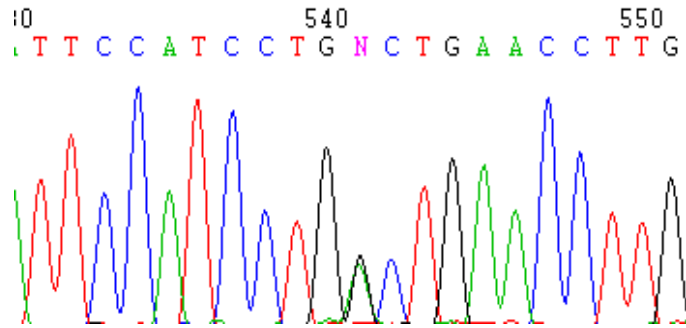
c.2219C>A



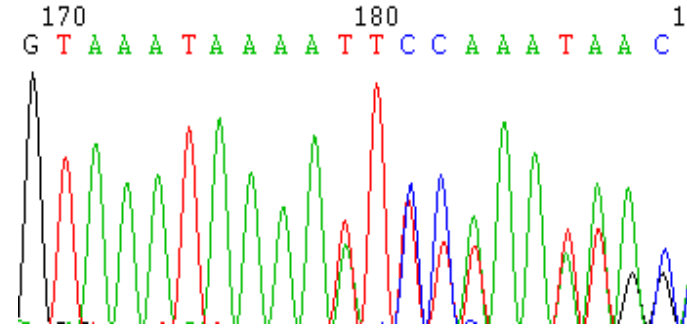
c.3613C>T



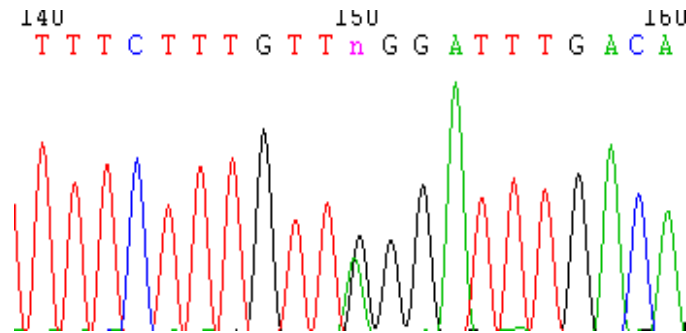
c.1071G>A



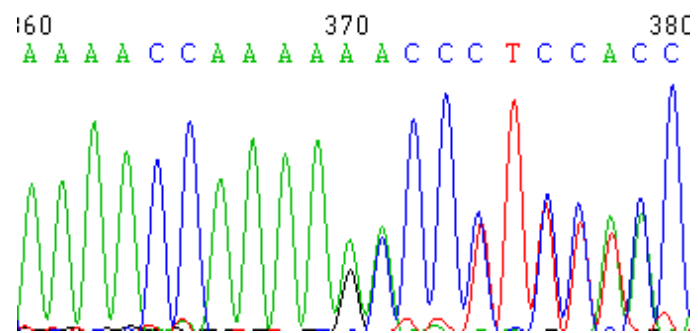
c.2822dupA



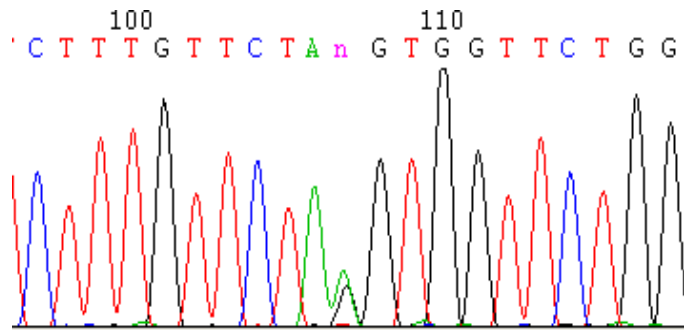
c.3136-2A>G



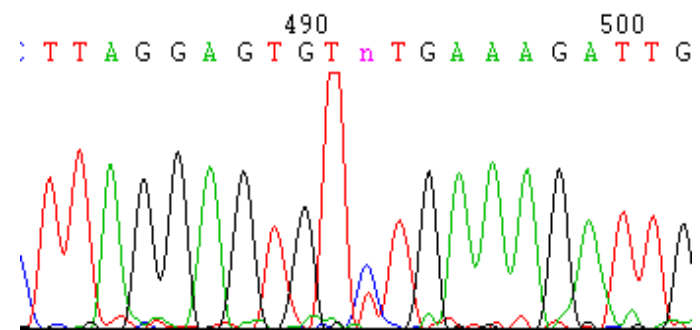
c.523_525delAAinsG



c.118-1G>A



c.2345C>T



c.2356C>T

