

**Title**

Novel highly divergent reassortant bat rotaviruses in Cameroon, without evidence of zoonosis.

**Authors**

Claude Kwe Yinda<sup>1,2</sup>; Mark Zeller<sup>1</sup>; Nádia Conceição-Neto<sup>1,2</sup>; Piet Maes<sup>2</sup>; Ward Deboutte<sup>1</sup>; Leen Beller<sup>1</sup>; Elisabeth Heylen<sup>1</sup>; Stephen Mbigha Ghogomu<sup>3</sup>; Marc Van Ranst<sup>2</sup>; Jelle Matthijnsens<sup>1\*</sup>

<sup>1</sup>*KU Leuven - University of Leuven, Department of Microbiology and Immunology, Laboratory of Viral Metagenomics, Rega Institute for Medical Research, Leuven, Belgium*

<sup>2</sup>*KU Leuven - University of Leuven, Department of Microbiology and Immunology, Laboratory for Clinical Virology, Rega Institute for Medical Research, Leuven, Belgium*

<sup>3</sup>*University of Buea, Department of Biochemistry and Molecular Biology, Molecular and cell biology laboratory, Biotechnology Unit, Buea, Cameroon*

\*Corresponding author.

**Email addresses:**

CKY: kweclaude.yinda@kuleuven.be

MZ: mark.zeller@kuleuven.be

NCN: nadia.neto@kuleuven.be

PM: piet.maes@kuleuven.be

WD: ward.deboutte@kuleuven.be

LB: leen.beller@kuleuven.be

EH: elisabeth.heylen@kuleuven.be

SMG: stephen.ghogomu@ubuea.cm

MVR: marc.vanranst@kuleuven.be

JM: jelle.matthijnsens@kuleuven.be















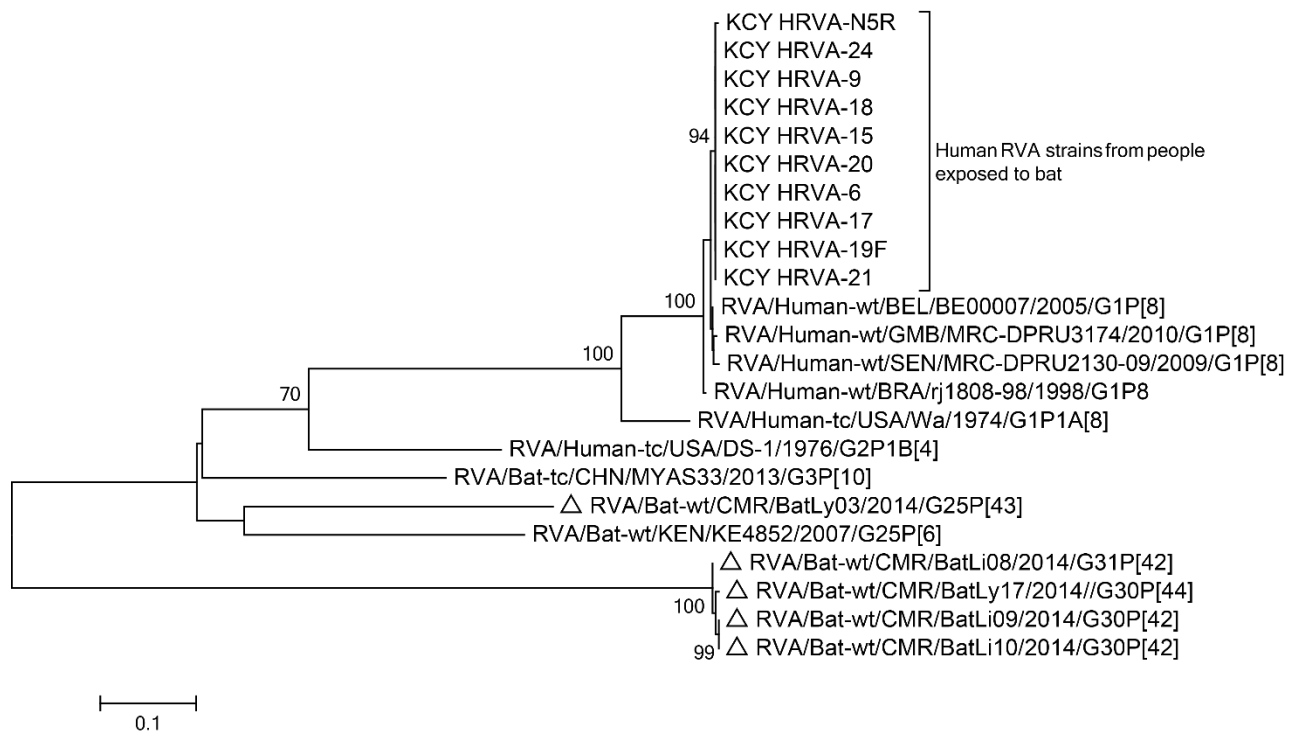


**Supplementary data S2:** Nucleotide percentage similarity between primers and corresponding sequences of Cameroonian bat RVA strains. -: 5' or 3'-end amplification failed.

Name of primer	BatLy03 G25P[43]	BatLi08 G31P[42]	BatLi09 G30P[42]	BatLy17 G30P[47]	BatLi10 G30P[42]	Reference (PMCID)
<b>Outer capsid glycoprotein VP7 forward primers</b>						
Beg9	96.4	57.1	-	85.7	-	2155916
sBeg9	100	57.1	-	90.5	-	2155916
9Con1-L	100	100	-	100	-	7929782
<b>Outer capsid glycoprotein VP7 reverse primer</b>						
EndA	78.2	91.3	95.7	-	-	10364621
VP7-Rdeg	95.0	95.0	100	-	-	11264359
End9	85.1	66.7	59.3	-	-	2155916
RVG9	89.5	63.2	63.2	-	-	2155916
<b>Outer capsid protein VP4 forward primers</b>						
VP4-1-17F	88.8	88.8	77.8	94.4	-	22189107
Con3	72.7	68.2	72.7	63.6	72.7	1320625
<b>Outer capsid protein VP4 reverse primer</b>						
Con2	85.7	81.0	81.0	76.2	81.0	1320625

**Supplementary data S3:** Phylogenetic trees of nucleotide sequences of the RVA VP6 sequence.

HRVA: Human RVA VP6 sequence from patients exposed to bats; open triangle: Cameroonian bat RVA strains; Other bat RVA: KE4582, MSLH14 and MYAS33. Bootstrap values (1000 replicates) above 70% are shown. Scale represent number of nucleotide substations per site.



**Supplementary data S4: List of primers used for the completion of genome and screening**

<b>Description</b>	<b>Primer name</b>	<b>Primer sequence (5'→3')</b>
Screening primers for human and bat RVAs	RVA-VP6_40F	GCK AGR GAC AAR ATT GTY GAA GG
	RVA-VP6_1083R	GWC CAA TTC ATR CCT GGT GGA
Primers for completing segments of RVA/Bat-wt/CMR/BatLy03/2014/G25P[43]	RVA59_VP1_301-322R	TTA GCT AAT TTA CCC TCA ACG G
	RVA59_VP1_328-349F	AAG CTA ACG TCA GAA TTA TTC GC
	RVA59_VP1_737-758R	GCT ACT AAG ATT GAC ATT GGT G
	RVA59_VP1_2991-3013F	GTC AAT AAA CTA TGG CTG TTA CC
	RVA59_VP1_3048-3072F	ATT AAT TCG TAT ACC CTT CAA AGG T
	RVA59_VP3_76-100F	CAA TCT TAT GCT GAT ACT CAA ACG
	RVA59_VP3_787-809R	TGT CAA ATT GTG AAA TAC GTC GC
	RVA59_VP3_1795-1818F	CGT TAT CTG GTT ACA TAT TTA GAG
	RVA59_VP4_2063-2084F	GAA CAG ATG GTA GAT TTT TCG C
	RVA59_VP4_171-195R	TAC AGT TGT TGA ATC GTT AAT TTC C
Primers for completing segments of RVA/Bat-wt/CMR/BatLi10/2014/G30P[42]	RVA46_VP4_118-137_F	TTA CGC ACC AGT GAA TTG GG
	RVA46_VP4_839-860_R	ACC ACT TAT ATC CTA AAC CAC C
	RVA46_VP7_172-191_F	TCA ATG GAC GTT GTG TTG GC
	RVA46_VP7_803-823_R	GAT TTG TTG TTG GAT CTG ACG
Primers for the amplification of 5' and 3' ends of VP7 and VP4 segments	RVA63_VP7-5'-227_R	TTA CTAGAC TCA TGT CCA TCG
	RVA63_VP7-3'-839_F	AGT ATT ACA AGT TGG AGG TGC
	RVA894_VP7-5'-202_R	TGT AAC CGG TAT GTT CAA TCC
	RVA894_VP7-3'-788_F	GTA AGA AAA TCG GAC CTA GAG
	RVA59_VP7-5'-213_R	TCC ATT GAT CCA GTA ATT GGC
	RVA59_VP7-3'-843_F	TAT AAC AGC AGA TCC AAC GAC
	RVA63_VP4-5'-230_R	ATA CCC AAT TAT CGA CTG CTG
	RVA63_VP4-3'-2143_F	CTT GTA ACT GAT TCA CCA GTC
	RVA59_VP4-5'-214_R	AAA TTC TGT TGG CTG ATA GGG
	RVA59_VP4-3'-2100_F	AGA TTT TTC GCA TAT AAA GTG AGC
RVA894_VP4-5'-158_R	TAC TGT TGA GTC ATT TAC TTC CC	
	RVA894_VP4-3'-2072_F	GAA CAG ATG GTA GAT TTT TCG C