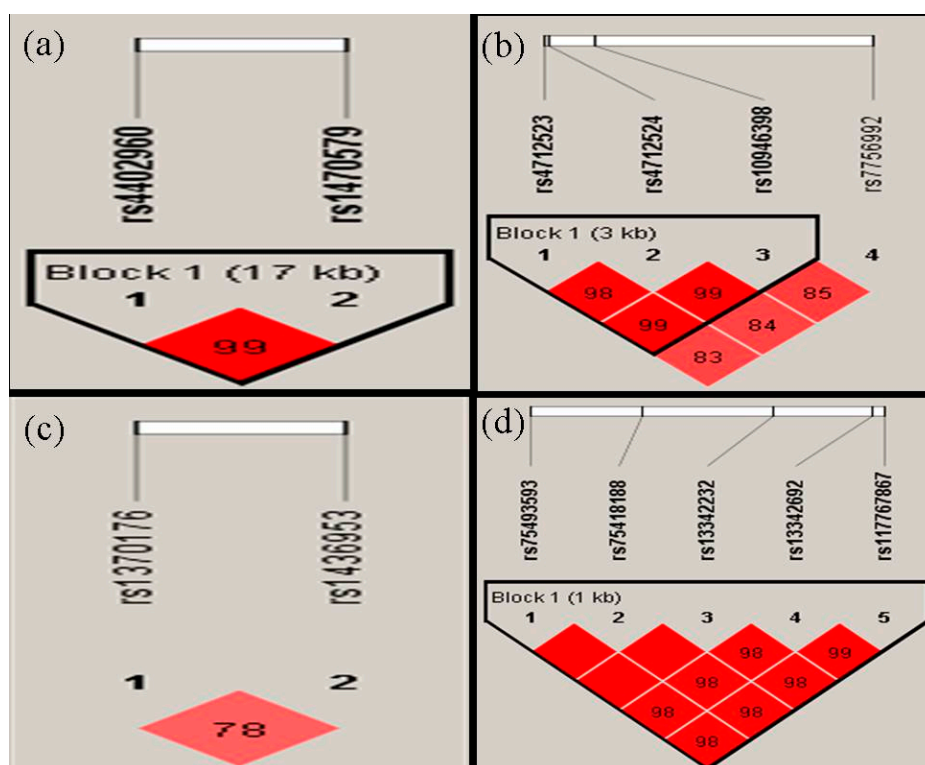


## Supplementary Materials: Validation of Type 2 Diabetes Risk Variants Identified by Genome-Wide Association Studies in Northern Han Chinese

Ping Rao, Yong Zhou, Si-Qi Ge, An-Xin Wang, Xin-Wei Yu, Mohamed Ali Alzain, Andrea Katherine Veronica, Jing Qiu, Man-Shu Song, Jie Zhang, Hao Wang, Hong-Hong Fang, Qing Gao, You-Xin Wang and Wei Wang



**Figure S1.** Linkage disequilibrium (LD) plot of IGF2BP2, CDKAL1, C2CD4A/B and SLC16A11 (a) IGF2BP2; (b) CDKAL1; (c) C2CD4A/B; (d) SLC16A11.

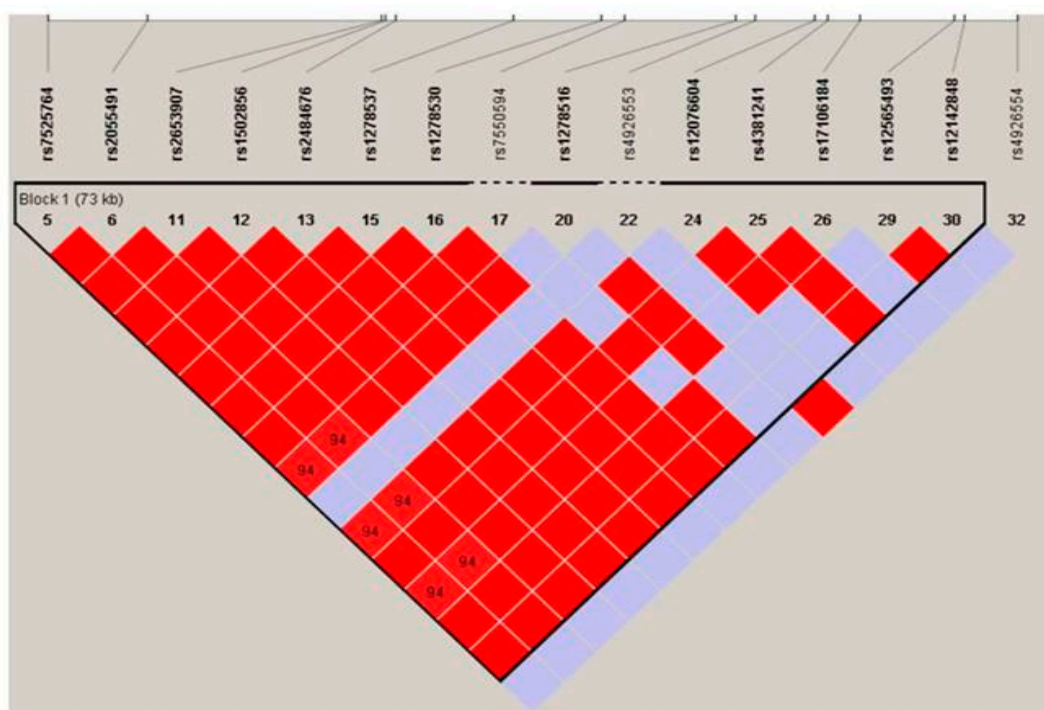


Figure S2. Linkage disequilibrium (LD) plot of a 100 kb 1p33 region based on HapMap-CHB data.



© 2016 by the authors. Submitted for possible open access publication under the terms and conditions of the Creative Commons Attribution (CC-BY) license (<http://creativecommons.org/licenses/by/4.0/>).